

JUL 19 2016

RECEIVED

DISTRICT I  
1625 N. FRENCH DR., HOBBS, NM 88240  
Phone: (575) 393-6101 Fax: (575) 393-0720

DISTRICT II  
911 S. FIRST ST., ARTESIA, NM 88210  
Phone: (505) 748-1253 Fax: (505) 748-0720

DISTRICT III  
1000 RIO BRAZOS RD., AZTEC, NM 87410  
Phone: (505) 334-6176 Fax: (505) 334-6170

DISTRICT IV  
1220 S. ST. FRANCIS DR., SANTA FE, NM 87505  
Phone: (505) 476-3460 Fax: (505) 476-3462

State of New Mexico  
Energy, Minerals & Natural Resources Department  
**OIL CONSERVATION DIVISION**  
1220 SOUTH ST. FRANCIS DR.  
Santa Fe, New Mexico 87505

Form C-102

Revised August 1, 2011

Submit one copy to appropriate  
District Office

AMENDED REPORT

## WELL LOCATION AND ACREAGE DEDICATION PLAT

API Number 30-025-43299	Pool Code 98098	Pool Name WC-025 G-09 5243532M; Wolfbone
Property Code 314771	Property Name SKULL CAP FEDERAL COM	Well Number 22H
OGRID No. 229137	Operator Name COG OPERATING, LLC	Elevation 3286.0'

## Surface Location

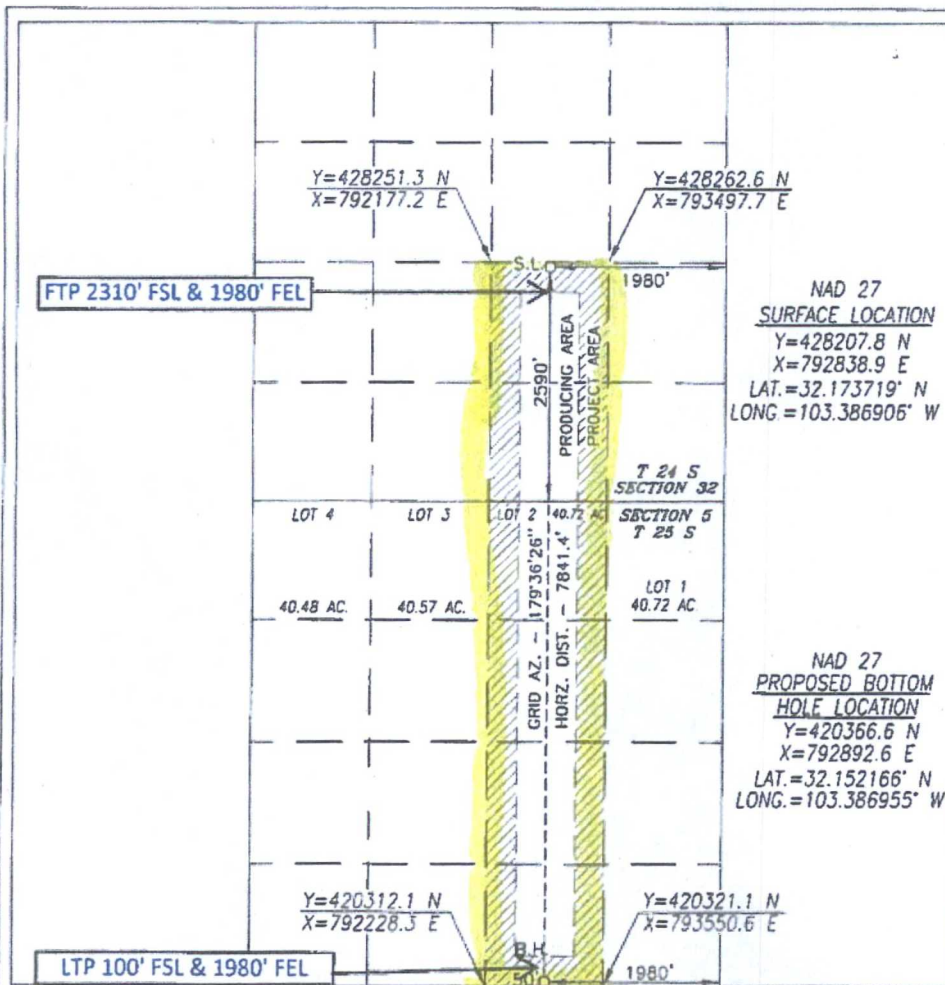
UL or lot No.	Section	Township	Range	Lot Idn	Feet from the	North/South line	Feet from the	East/West line	County
J	32	24-S	35-E		2590	SOUTH	1980	EAST	LEA

## Bottom Hole Location If Different From Surface

UL or lot No.	Section	Township	Range	Lot Idn	Feet from the	North/South line	Feet from the	East/West line	County
0	5	25-S	35-E		50	SOUTH	1980	EAST	LEA

Dedicated Acres	Joint or Infill	Consolidation Code	Order No.
240.7			

NO ALLOWABLE WILL BE ASSIGNED TO THIS COMPLETION UNTIL ALL INTERESTS HAVE BEEN CONSOLIDATED  
OR A NON-STANDARD UNIT HAS BEEN APPROVED BY THE DIVISION



## OPERATOR CERTIFICATION

I hereby certify that the information herein is true and complete to the best of my knowledge and belief, and that this organization either owns a working interest or unless mineral interest in the land including the proposed bottom hole location or has a right to drill this well at this location pursuant to a contract with an owner of such mineral or working interest, or to a voluntary pooling agreement or a compulsory pooling order heretofore entered by the division.

*Melanie J. Wilson* 6/27/16  
Signature Date

Melanie J. Wilson

Printed Name

mwilson@concho.com

E-mail Address

## SURVEYOR CERTIFICATION

I hereby certify that the well location shown on this plat was plotted from field notes of actual surveys made by me or under my supervision, and that the same is true and correct to the best of my belief.

MARCH 24, 2015

Date of Survey

Signature &amp; Seal of Professional Surveyor



*Chad Harcrow* 6/14/16  
Certificate No. CHAD HARCROW 17777  
W.O. # 16-465 DRAWN BY: CF