

DISTRICT I
1625 N. French Dr., Hobbs, NM 88240
Phone: (575) 393-6161 Fax: (575) 393-0720

DISTRICT II
811 S. First St., Artesia, NM 88210
Phone: (575) 748-1283 Fax: (575) 748-9720

DISTRICT III
1000 Rio Brazos Road, Aztec, NM 87410
Phone: (505) 334-6178 Fax: (505) 334-6170

DISTRICT IV
1220 S. St. Francis Dr., Santa Fe, NM 87505
Phone: (505) 476-3460 Fax: (505) 476-3462

State of New Mexico
Energy, Minerals & Natural Resources Department
OIL CONSERVATION DIVISION
1220 South St. Francis Dr.
Santa Fe, New Mexico 87505

Form C-102
Revised August 1, 2011
Submit one copy to appropriate
District Office

AMENDED REPORT

WELL LOCATION AND ACREAGE DEDICATION PLAT

API Number 30-025-47417	Pool Code 97895	Pool Name WC-D25 G-08 S2133040; Bone Spring
Property Code 316800	Property Name SEVERUS 31 FEDERAL COM	
OGRID No. 006380	Operator Name XTO ENERGY	Well Number 3H
		Elevation 3688'

Surface Location

UL or lot No.	Section	Township	Range	Lot Idn	Feet from the	North/South line	Feet from the	East/West line	County
N	30	20-S	34-E		240	SOUTH	1750	WEST	LEA

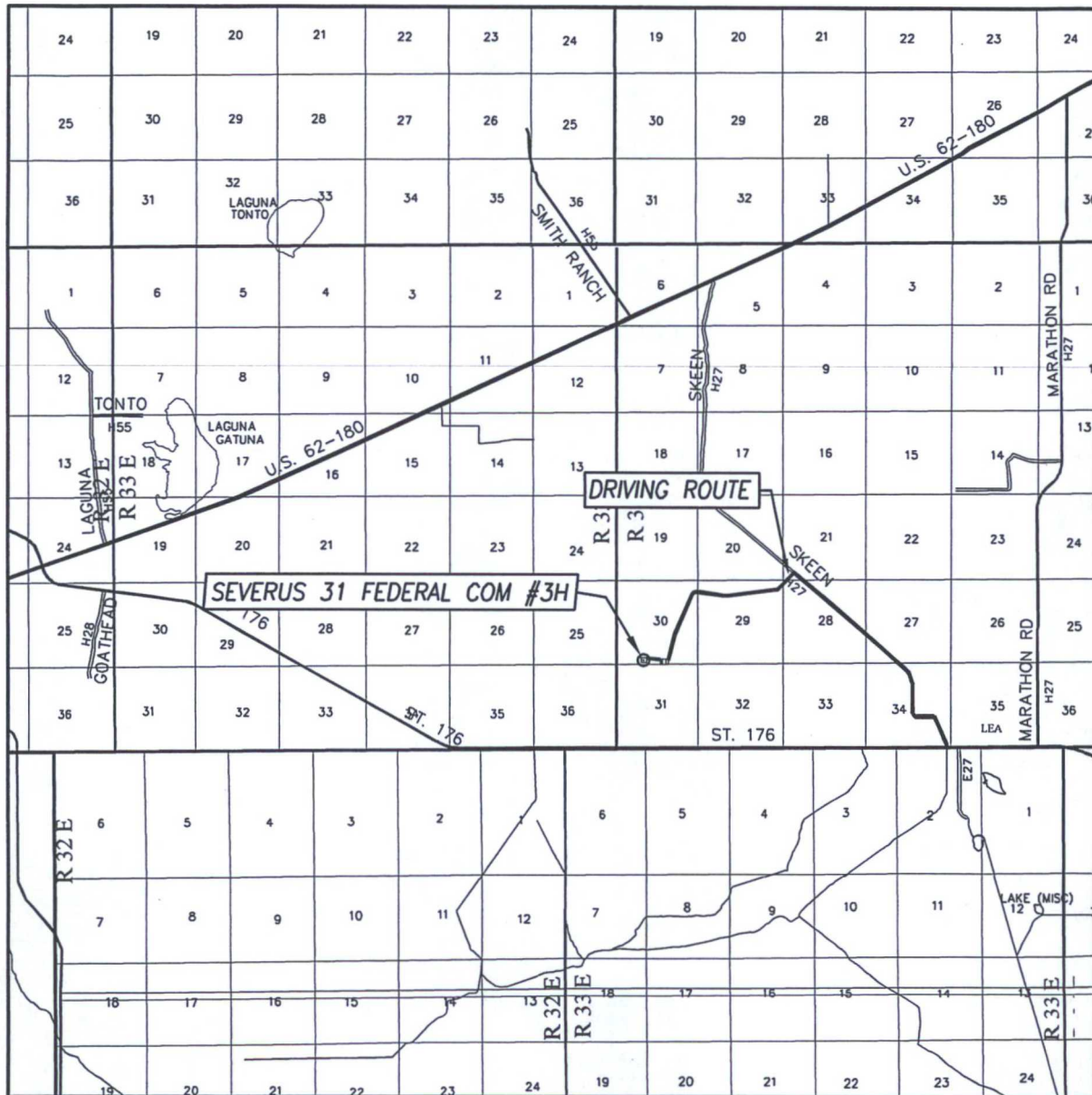
Bottom Hole Location If Different From Surface

UL or lot No.	Section	Township	Range	Lot Idn	Feet from the	North/South line	Feet from the	East/West line	County
N	31	20-S	34-E		200	SOUTH	2110	WEST	LEA
Dedicated Acres 11.60	Joint or Infill	Consolidation Code	Order No.						

NO ALLOWABLE WILL BE ASSIGNED TO THIS COMPLETION UNTIL ALL INTERESTS HAVE BEEN CONSOLIDATED OR A NON-STANDARD UNIT HAS BEEN APPROVED BY THE DIVISION

<p>CORNER COORDINATES TABLE NAD 83 NME</p> <p>40.12 A - Y= 561129.9 N, X= 766125.8 E B - Y= 561142.7 N, X= 767446.8 E</p> <p>2 C - Y= 559823.3 N, X= 767457.1 E D - Y= 559810.7 N, X= 766135.7 E E - Y= 554524.7 N, X= 766167.1 E F - Y= 554533.0 N, X= 767490.5 E</p> <p>40.14</p> <p>3</p> <p>40.14</p> <p>4</p> <p>40.16</p> <p>1788'</p> <p>1750'</p> <p>240'</p> <p>330'</p> <p>SECTION 30</p> <p>SECTION 31</p> <p>1st TP</p> <p>2nd TP</p> <p>GRID AZ.= 175°45'27"</p> <p>HORIZ. DIST.= 5340.8'</p> <p>2101'</p> <p>2110'</p> <p>40.10</p> <p>40.06</p> <p>40.02</p> <p>200'</p> <p>330'</p>	<p>CORNER COORDINATES TABLE NAD 27 NME</p> <p>A - Y= 561067.8 N, X= 724944.7 E B - Y= 561080.6 N, X= 726265.6 E C - Y= 559761.2 N, X= 726275.9 E D - Y= 559748.6 N, X= 724954.5 E E - Y= 554462.8 N, X= 724985.8 E F - Y= 554471.1 N, X= 726309.1 E</p> <p>GEODETIC COORDINATES NAD 27 NME SURFACE LOCATION Y= 559992.6 N X= 725375.8 E</p> <p>LAT.=32.537402° N LONG.=103.602013° W</p> <p>1st TP NAD 27 NME Y= 559423.1 N X= 725418.0 E</p> <p>LAT.=32.535835° N LONG.=103.601889° W</p> <p>2nd TP NAD 27 NME Y= 554797.6 N X= 725761.0 E</p> <p>LAT.=32.523115° N LONG.=103.600879° W</p> <p>GEODETIC COORDINATES NAD 83 NME SURFACE LOCATION Y= 560054.7 N X= 766556.9 E</p> <p>LAT.=32.537524° N LONG.=103.602504° W</p> <p>1st TP NAD 83 NME Y= 559485.2 N X= 766599.2 E</p> <p>LAT.=32.535958° N LONG.=103.602379° W</p> <p>2nd TP NAD 83 NME Y= 554859.5 N X= 766942.3 E</p> <p>LAT.=32.523238° N LONG.=103.601369° W</p> <p>BOTTOM HOLE LOCATION NAD 27 NME Y= 554667.6 N X= 725770.6 E</p> <p>LAT.=32.522758° N LONG.=103.600851° W</p> <p>BOTTOM HOLE LOCATION NAD 83 NME Y= 554729.6 N X= 766952.0 E</p> <p>LAT.=32.522881° N LONG.=103.601341° W</p>	<p>OPERATOR CERTIFICATION</p> <p>I hereby certify that the information herein is true and complete to the best of my knowledge and belief, and that this organization either owns a working interest or unleased mineral interest in the land including the proposed bottom hole location or has a right to drill this well at this location pursuant to a contract with an owner of such mineral or working interest, or to a voluntary pooling agreement or a compulsory pooling order heretofore entered by the division.</p> <p><i>Stephane Rabadeu</i> Signature Date</p> <p><i>Stephane Rabadeu</i> Printed Name</p> <p><i>Stephane.rabadeu@xtoenergy.com</i> E-mail Address</p> <p>SURVEYOR CERTIFICATION</p> <p>I hereby certify that the well location shown on this plat was plotted from field notes of actual surveys made by me or under my supervision, and that the same is true and correct to the best of my belief.</p> <p>DECEMBER 17, 2014</p> <p>Date of Survey</p> <p>Signature & Seal of Professional Surveyor:</p> <p><i>Ronald J. Eidson</i> Certificate Number 3239</p> <p>LSL JWSC W.O.: 14.11.1338</p>
--	--	--

VICINITY MAP



SCALE: 1" = 2 MILES

DRIVING ROUTE: SEE LOCATION VERIFICATION MAP

SEC. 30 TWP. 20-S RGE. 34-E

SURVEY N.M.P.M.


COUNTY LEA STATE NEW MEXICO

DESCRIPTION 240' FSL & 1750' FWL

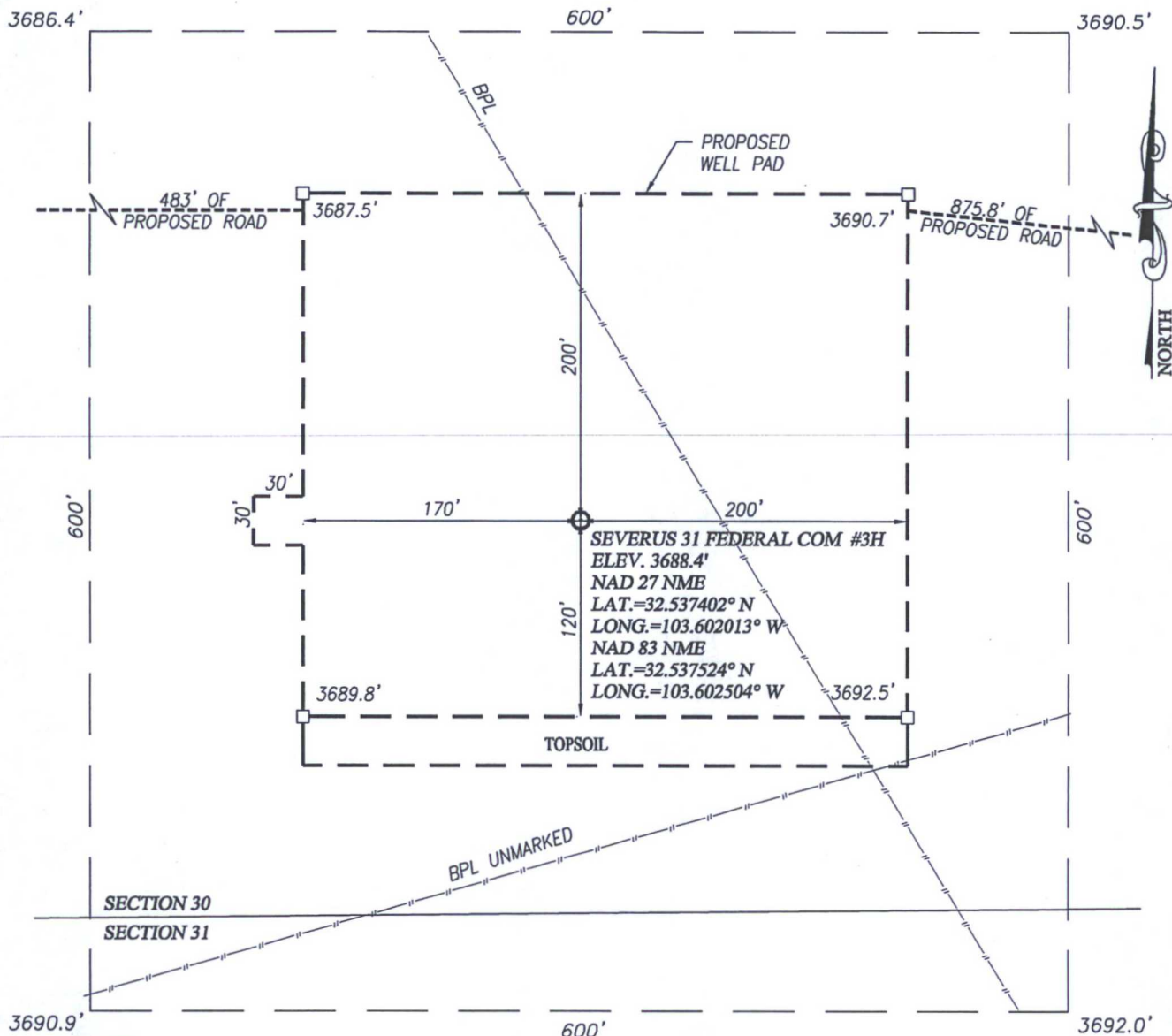
ELEVATION 3688'

OPERATOR XTO ENERGY

LEASE SEVERUS 31 FEDERAL COM



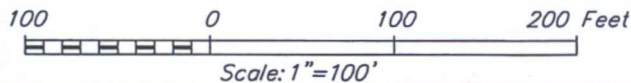
PROVIDING SURVEYING SERVICES
SINCE 1946
JOHN WEST SURVEYING COMPANY
412 N. DAL PASO HOBBS, N.M. 88240
(575) 393-3117 www.jwsc.biz
TBPLS# 10021000



NOTE:
1) SEE "LOCATION VERIFICATION MAP"
FOR PROPOSED ROAD LOCATION.

DIRECTIONS TO SEVERUS 31 FEDERAL COM #3H:

FROM THE MILE MARKER 11 GO EAST ON ST. 176 APPROX. 0.4 MILES TO SKEEN ROAD. TURN LEFT AND GO NORTHWEST APPROX. 3.0 MILES, TURN LEFT AND GO SOUTHWEST APPROX. 0.3 MILES, THEN ROAD BEND'S RIGHT AND GO WEST APPROX. 1.2 MILES TO THE Y GO LEFT AND GO SOUTHWEST APPROX. 0.6 MILES TO THE PROPOSED ROAD. FOLLOW PROPOSED ROAD STAKES SOUTH 1646.8' TO THE #1H PAD THEN GO WEST CROSSING THE #1H & #2H PADS 485.3' THEN FOLLOW ROAD STAKES NW 875.8' TO THIS LOCATION.



XTO ENERGY

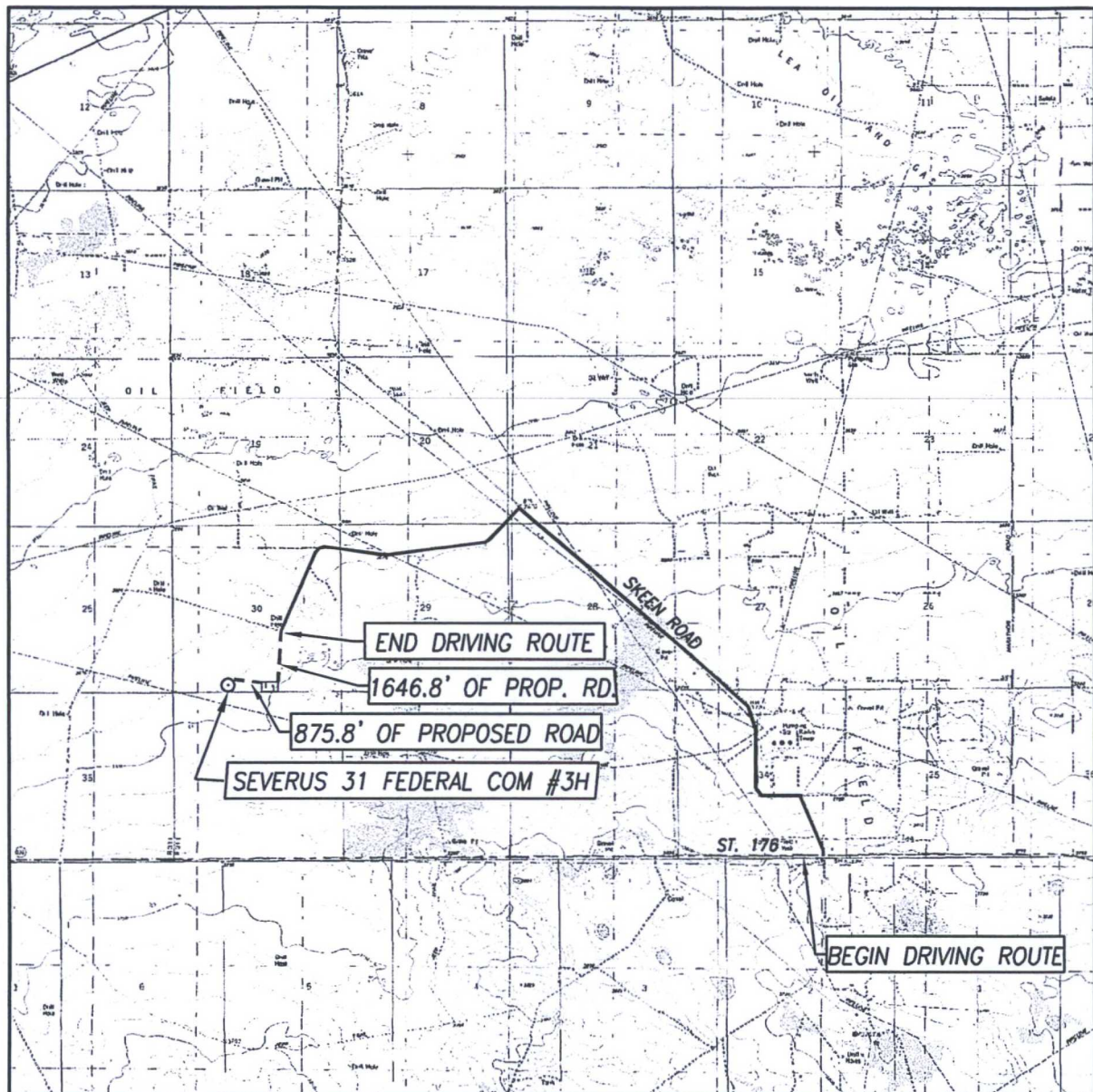
SEVERUS 31 FEDERAL COM #3H WELL
LOCATED 240 FEET FROM THE SOUTH LINE
AND 1750 FEET FROM THE WEST LINE OF SECTION 30,
TOWNSHIP 20 SOUTH, RANGE 34 EAST, N.M.P.M.,
LEA COUNTY, NEW MEXICO

Survey Date: 12/17/14	CAD Date: 1/29/15	Drawn By: LSL
W.O. No.: 14111338	Rev. :	Rel. W.O.:
		Sheet 1 of 1



PROVIDING SURVEYING SERVICES
SINCE 1946
JOHN WEST SURVEYING COMPANY
412 N. DAL PASO HOBBS, N.M. 88240
(575) 393-3117 www.jwsc.biz
TBPLS# 10021000

LOCATION VERIFICATION MAP



SCALE: 1" = 5280'

CONTOUR INTERVAL:
LEA, N.M. - 10'

SEC. 30 TWP. 20-S RGE. 34-E
SURVEY N.M.P.M.
COUNTY LEA STATE NEW MEXICO
DESCRIPTION 240' FSL & 1750' FWL
ELEVATION 3688'

OPERATOR XTO ENERGY
LEASE SEVERUS 31 FEDERAL COM
U.S.G.S. TOPOGRAPHIC MAP
LEA, N.M.

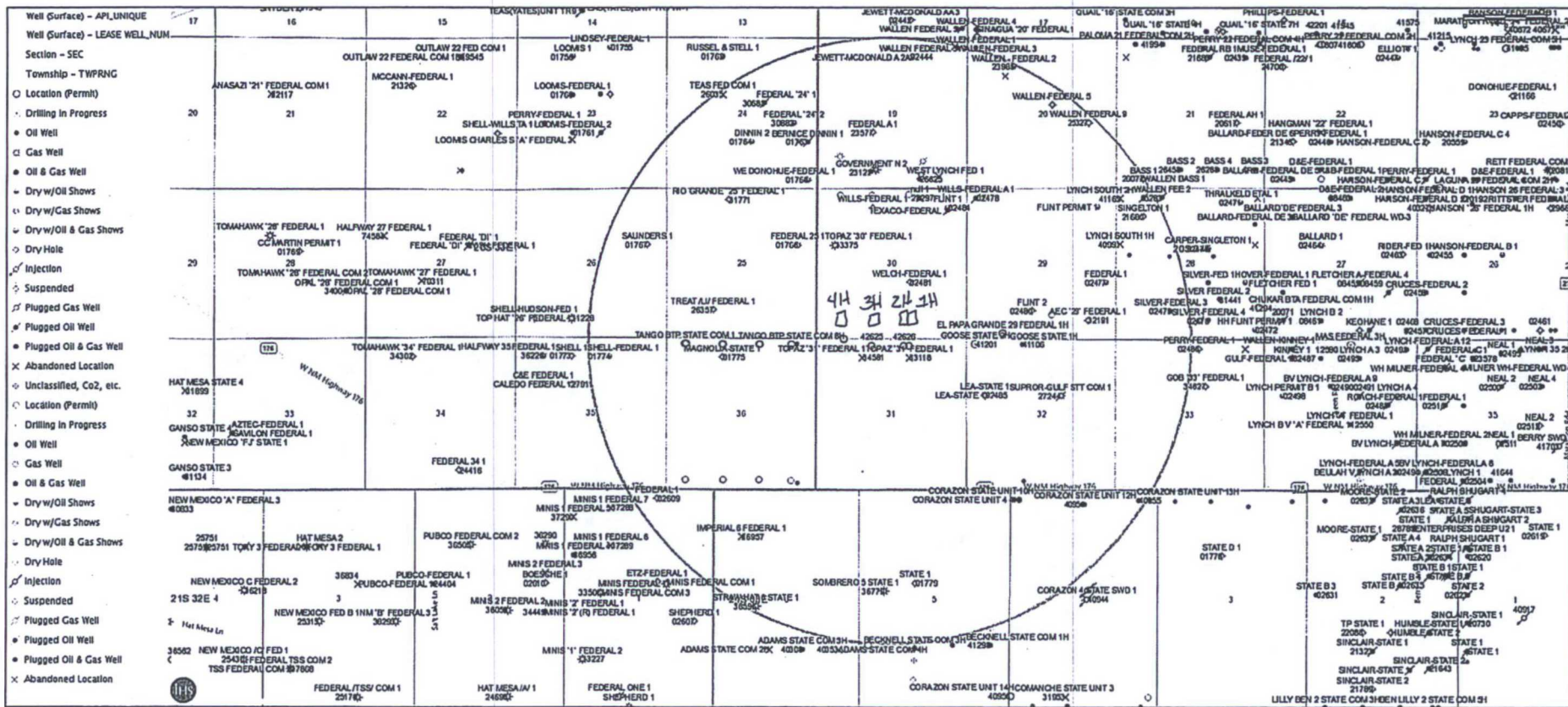
DIRECTIONS TO SEVERUS 31 FEDERAL COM #3H:

FROM THE MILE MARKER 11 GO EAST ON ST. 176 APPROX. 0.4 MILES TO SKEEN ROAD. TURN LEFT AND GO NORTHWEST APPROX. 3.0 MILES, TURN LEFT AND GO SOUTHWEST APPROX. 0.3 MILES, THEN ROAD BEND'S RIGHT AND GO WEST APPROX. 1.2 MILES TO THE Y GO LEFT AND GO SOUTHWEST APPROX. 0.6 MILES TO THE PROPOSED ROAD. FOLLOW PROPOSED ROAD STAKES SOUTH 1646.8' TO THE #1H PAD THEN GO WEST CROSSING THE #1H & #2H PADS 485.3' THEN FOLLOW ROAD STAKES NW 875.8' TO THIS LOCATION.



PROVIDING SURVEYING SERVICES
SINCE 1946
JOHN WEST SURVEYING COMPANY
412 N. DAL PASO HOBBS, N.M. 88240
(575) 393-3117 www.jwsc.biz
TBPLS# 10021000

Severus Federal Lease



1-mile radius map