

District I
1625 N. French Dr., Hobbs, NM 88240
Phone: (575) 393-6161 Fax: (575) 393-0720
District II
811 S. First St., Artesia, NM 88210
Phone: (575) 748-1283 Fax: (575) 748-9720
District III
1000 Rio Brazos Road, Aztec, NM 87410
Phone: (505) 334-6178 Fax: (505) 334-6170
District IV
1220 S. St. Francis Dr., Santa Fe, NM 87505
Phone: (505) 476-3460 Fax: (505) 476-3462

State of New Mexico
Energy, Minerals & Natural Resources Department
OIL CONSERVATION DIVISION
1220 South St. Francis Dr.
Santa Fe, NM 87505

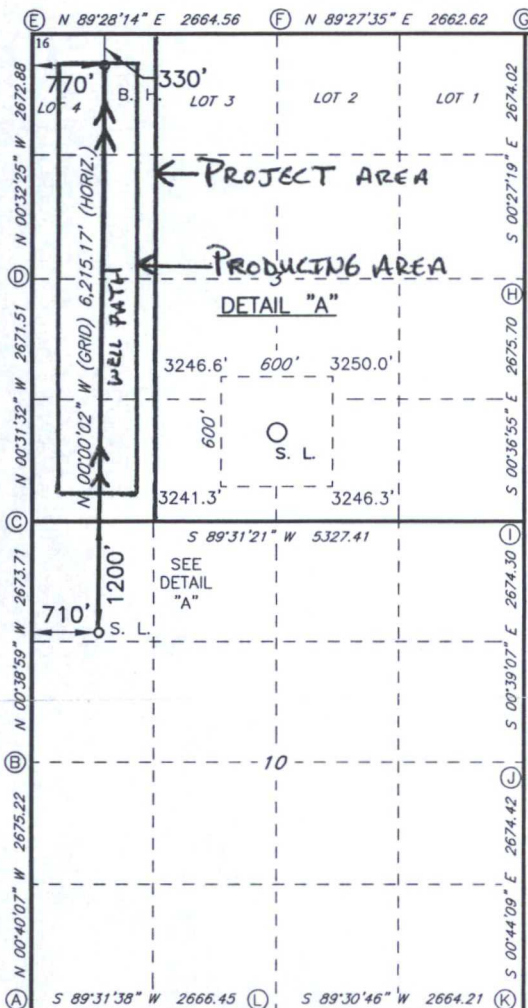
Form C-102
Revised August 1, 2011
Submit one copy to appropriate
District Office

☐ AMENDED REPORT

WELL LOCATION AND ACREAGE DEDICATION PLAT

¹ API Number 30-025-43428		² Pool Code 97838		³ Pool Name JENNINGS UPPER BONE SPRING SHALE	
⁴ Property Code 39542		⁵ Property Name RED HILLS WEST UNIT			⁶ Well Number 17H
⁷ GRID NO. 14744		⁸ Operator Name MEWBOURNE OIL COMPANY			⁹ Elevation 3245'
¹⁰ Surface Location					
UL or lot no. D	Section 10	Township 26S	Range 32E	Lot Idn	Feet from the 1200
				North/South line NORTH	Feet From the 710
				East/West line WEST	County LEA
¹¹ Bottom Hole Location If Different From Surface					
UL or lot no. D	Section 3	Township 26S	Range 32E	Lot Idn	Feet from the 330
				North/South line NORTH	Feet from the 770
				East/West line WEST	County LEA
¹² Dedicated Acres 160		¹³ Joint or Infill		¹⁴ Consolidation Code	
				¹⁵ Order No.	

No allowable will be assigned to this completion until all interest have been consolidated or a non-standard unit has been approved by the division.



GEODETIC DATA
NAD 27 GRID - NM EAST

SURFACE LOCATION
N: 386753.1 - E: 705912.2
LAT: 32.06155655° N
LONG: 103.66865121° W

BOTTOM HOLE
N: 392967.1 - E: 705912.1

CORNER DATA
NAD 27 GRID - NM EAST
A: FOUND BRASS CAP "1939"
N: 382599.3 - E: 705250.3
B: FOUND BRASS CAP "1939"
N: 385273.8 - E: 705219.0
C: FOUND BRASS CAP "1939"
N: 387946.8 - E: 705188.7
D: FOUND BRASS CAP "1939"
N: 390617.7 - E: 705164.2
E: FOUND BRASS CAP "1916"
N: 393289.9 - E: 705139.0
F: FOUND BRASS CAP "1916"
N: 393314.6 - E: 707803.0
G: FOUND BRASS CAP "1916"
N: 393339.7 - E: 710464.9
H: FOUND BRASS CAP "1939"
N: 390666.2 - E: 710486.2
I: FOUND BRASS CAP "1939"
N: 387991.2 - E: 710514.9
J: FOUND BRASS CAP "1939"
N: 385317.6 - E: 710545.3
K: FOUND BRASS CAP "1939"
N: 382643.9 - E: 710579.7
L: FOUND BRASS CAP "1939"
N: 382621.3 - E: 707916.1

17 OPERATOR CERTIFICATION

I hereby certify that the information contained herein is true and complete to the best of my knowledge and belief, and that this organization either owns a working interest or unleased mineral interest in the land including the proposed bottom hole location or has a right to drill this well at this location pursuant to a contract with an owner of such a mineral or working interest, or to a voluntary pooling agreement or a compulsory pooling order heretofore entered by the division.

Signature: **BRADLEY BISHOP** Date: **5-28-15**
Printed Name: **BRADLEY BISHOP**

E-mail Address

18 SURVEYOR CERTIFICATION

I hereby certify that the well location shown on this plat was plotted from field notes of actual surveys made by me or under my supervision, and that the same is true and correct to the best of my belief.

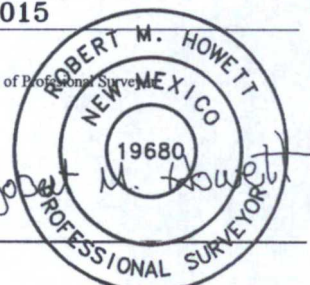
3-16-2015

Date of Survey

Signature and Seal of Professional Surveyor

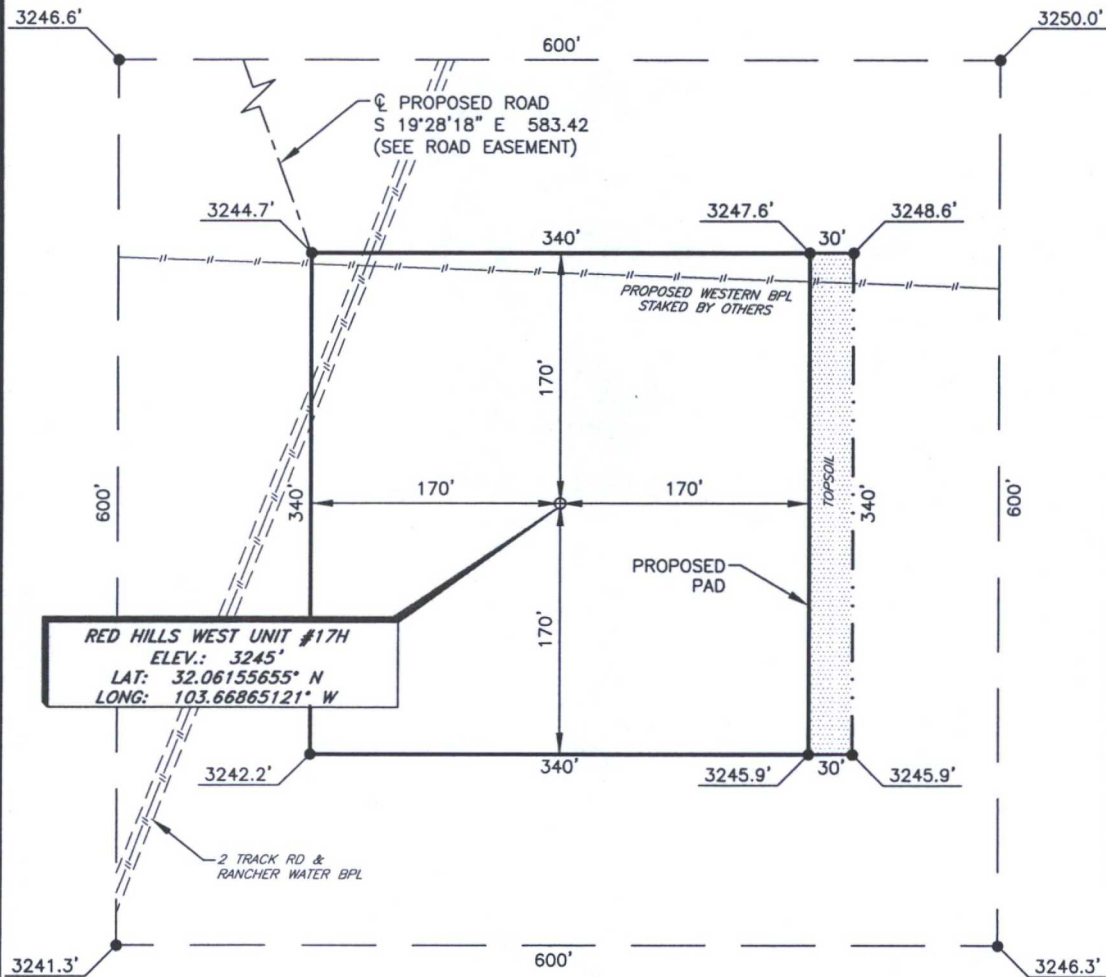
19680

Certificate Number



MEWBOURNE OIL COMPANY

RED HILLS WEST UNIT #17H
(1200' FNL & 710' FWL)
SECTION 10, T26S, R32E
N. M. P. M., LEA COUNTY, NEW MEXICO



DIRECTIONS TO LOCATION

From the intersection of CR-1 (Orla Rd.) and CR-2 (Battle Axe Rd.);
Go Northeast on CR-1 approx. 3.1 miles to a lease road on the right;
Turn right and go East approx. 0.2 miles to a lease road on the right;
Turn right and go South approx. 0.1 miles through existing pad to proposed road;
Turn left and go Southeast approx. 0.1 miles to proposed well on left.

SCALE: 1" = 100'
0 50 100

BEARINGS ARE
NAD 27 GRID - NM EAST
DISTANCES ARE GROUND

Firm No.: TX 10193838 NM 4655451

Copyright 2014 - All Rights Reserved

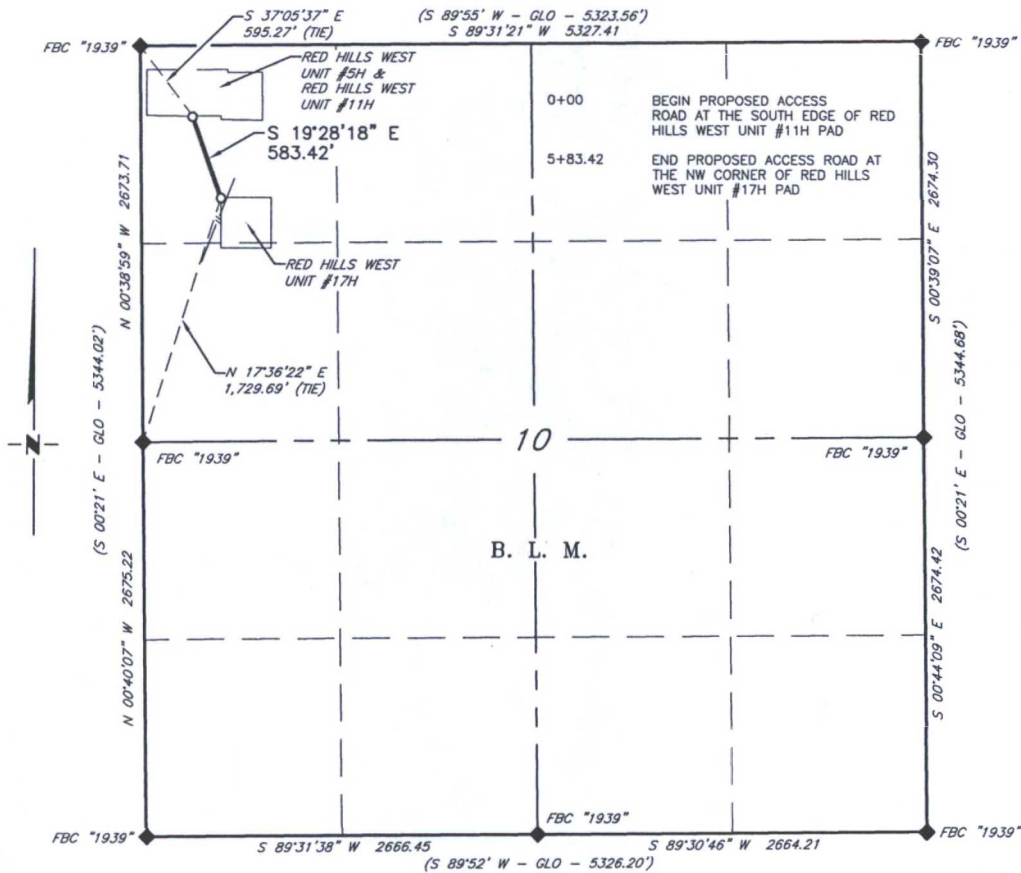
NO.	REVISION	DATE
JOB NO.:	LS1503069	
DWG. NO.:	1503069PAD	

RRC

308 W. BROADWAY ST., HOBBS, NM 88240 (575) 964-8200

SCALE: 1" = 100'
DATE: 3-16-2015
SURVEYED BY: BK/ER
DRAWN BY: CMJ
APPROVED BY: RMH
SHEET : 1 OF 1

MEWBOURNE OIL COMPANY
PROPOSED ACCESS ROAD FOR THE RED HILLS WEST UNIT #17H
SECTION 10, T26S, R32E,
N. M. P. M., LEA CO., NEW MEXICO



DESCRIPTION

A strip of land 30 feet wide, being 583.42 feet or 35.359 rods in length lying in Section 10, Township 26 South, Range 32 East, N. M. P. M., Lea County, New Mexico, being 15 feet left and 15 feet right of the following described survey of a centerline across B. L. M. land;

BEGINNING at Engr. Sta. 0+00, a point in the Northwest quarter of Section 10, which bears S 37°05'37" E, 595.27 feet from a brass cap, stamped "1939", found for the Northwest corner of Section 10;

Thence S 19°28'18" E, 583.42 feet to Engr. Sta. 5+83.42, the End of Survey, a point which bears N 17°36'22" E, 1,729.69 feet from a brass cap, stamped "1939" found for the West quarter corner of Section 10.

Said strip of land contains 0.402 acres, more or less, and is allocated by forties as follows:

NW 1/4 NW 1/4 35.359 Rods 0.402 Acres

SCALE: 1" = 1000'
0 500' 1000'

BEARINGS ARE GRID NAD 27
NM EAST
DISTANCES ARE HORIZ. GROUND.

LEGEND

() RECORD DATA - GLO

◆ FOUND MONUMENT
AS NOTED

— PROPOSED ACCESS ROAD

I, R. M. Howett, a N. M. Professional Surveyor, hereby certify that I prepared this plat from an actual survey made on the ground under my direct supervision, said survey and plat meet the Min. Stds. for Land Surveying in the State of N. M. and are true and correct to the best of my knowledge and belief.

Robert M. Howett
Robert M. Howett

Firm No.: TX 10193838 NM 4655451

NM PS 19680

Copyright 2014 - All Rights Reserved

NO.	REVISION	DATE
JOB NO.:	LS1503069	
DWG. NO.:	1503069RD	

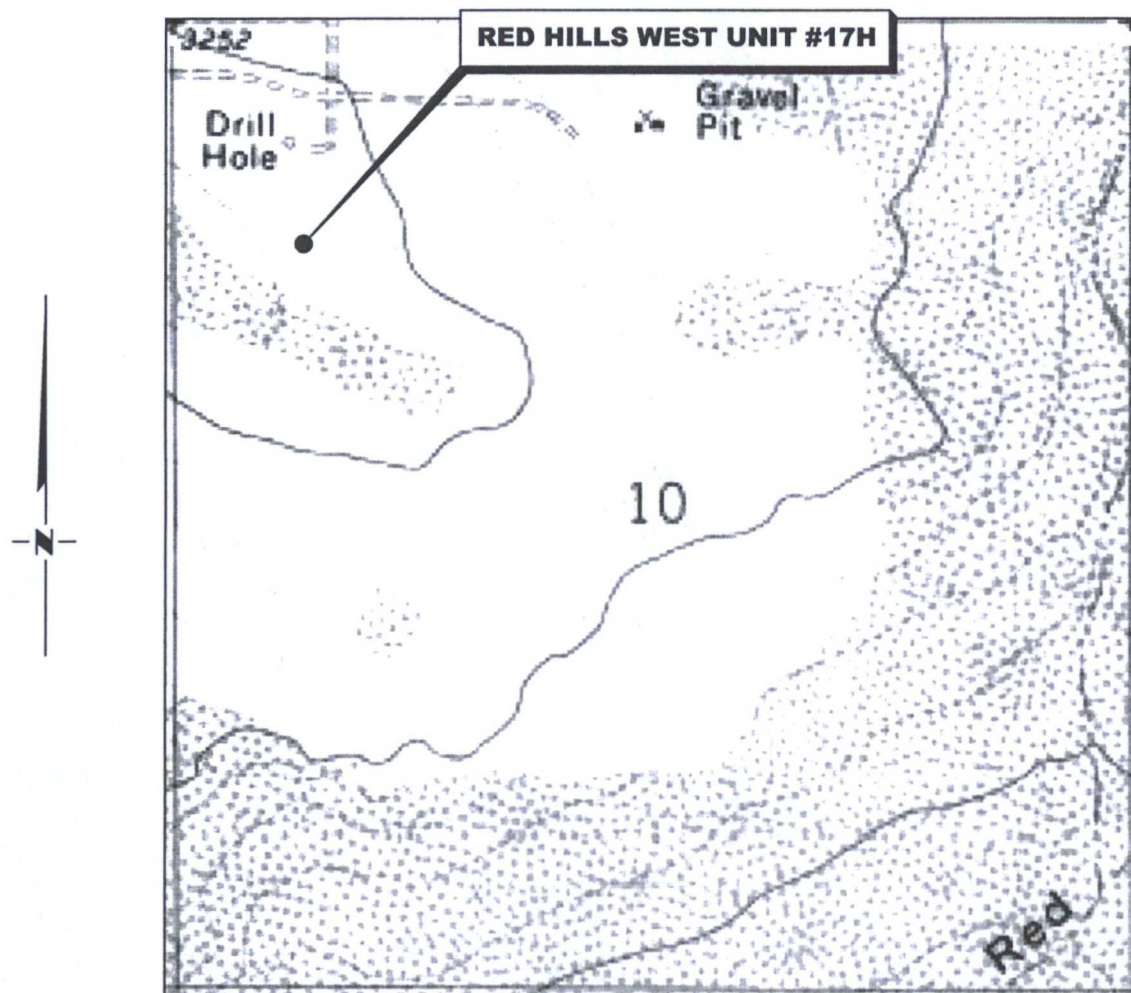
RRC

308 W. BROADWAY ST., HOBBS, NM 88240 (575) 964-8200



SCALE: 1" = 1000'
DATE: 3-16-2015
SURVEYED BY: GB/ER
DRAWN BY: CMJ
APPROVED BY: RMH
SHEET : 1 OF 1

LOCATION VERIFICATION MAP



*SECTION 10, TWP. 26 SOUTH, RGE. 32 EAST,
N. M. P. M., EDDY CO., NEW MEXICO*

OPERATOR: Mewbourne Oil Company
LEASE: Red Hills West Unit
WELL NO.: 17H
ELEVATION: 3245'

LOCATION: 1200' FNL & 710' FWL
CONTOUR INTERVAL:
USGS TOPO. SOURCE MAP:
Paduca Breaks West, NM (1973)

Firm No.: TX 10193838 NM 4655451

Copyright 2014 - All Rights Reserved

NO.	REVISION	DATE
JOB NO.: LS1503069		
DWG. NO.: 1503069LVM		

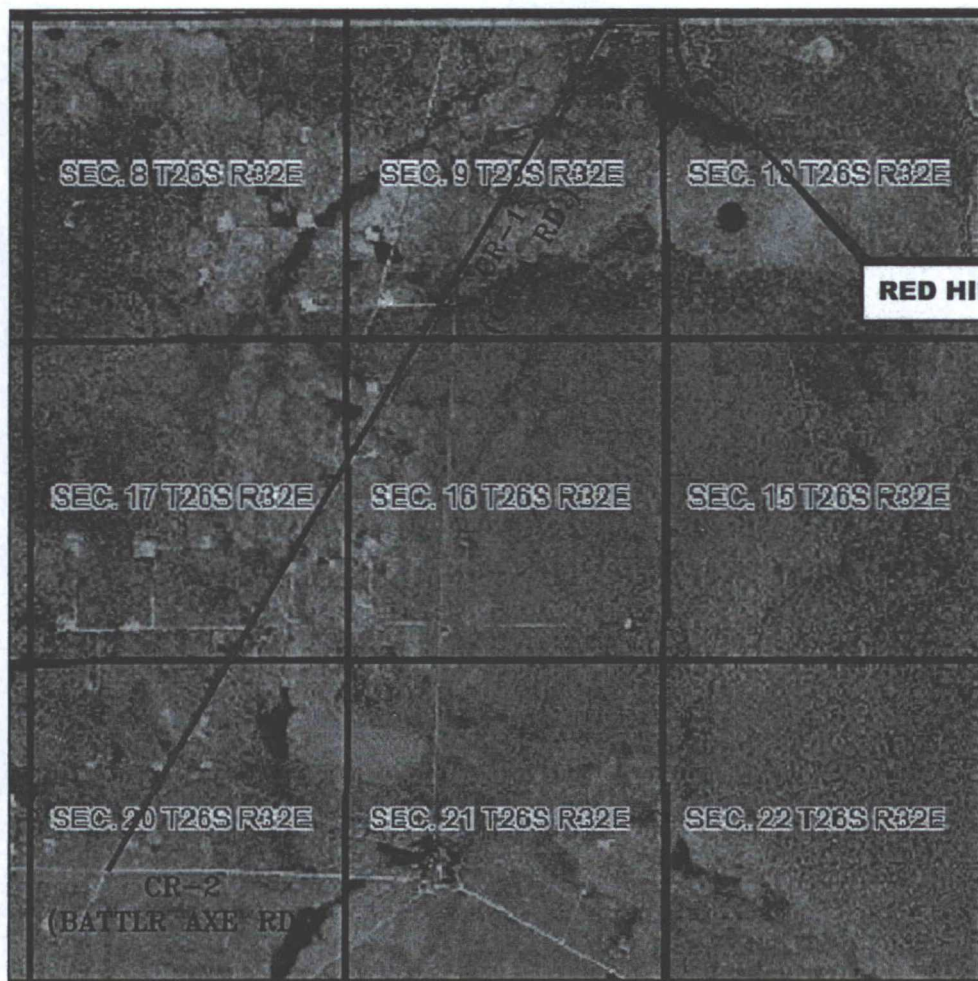
RRC

308 W. BROADWAY ST., HOBBS, NM 88240 (575) 964-8200

SCALE: 1"=1000'
DATE: 3-16-2015
SURVEYED BY: BK/ER
DRAWN BY: CMJ
APPROVED BY: RMH
SHEET : 1 OF 1

VICINITY MAP

NOT TO SCALE



*SECTION 10, TWP. 26 SOUTH, RGE. 32 EAST,
N. M. P. M., EDDY CO., NEW MEXICO*

OPERATOR: Mewbourne Oil Company
LEASE: Red Hills West Unit
WELL NO.: 17H

LOCATION: 1200' FNL & 710' FWL
ELEVATION: 3245'

Firm No.: TX 10193838 NM 4655451

Copyright 2014 - All Rights Reserved

NO.	REVISION	DATE
JOB NO.: LS1503069		
DWG. NO.: 1503069VM		

RRC

308 W. BROADWAY ST., HOBBS, NM 88240 (575) 964-8200

SCALE: NTS
DATE: 3-16-2015
SURVEYED BY: BK/ER
DRAWN BY: CMJ
APPROVED BY: RMH
SHEET : 1 OF 1

Battery site

flowline route

RHWU 10 #2H RHWU 10 #2H
RHWU 3 #2H

existing elec line

Proposed well site

NENE

NWNW

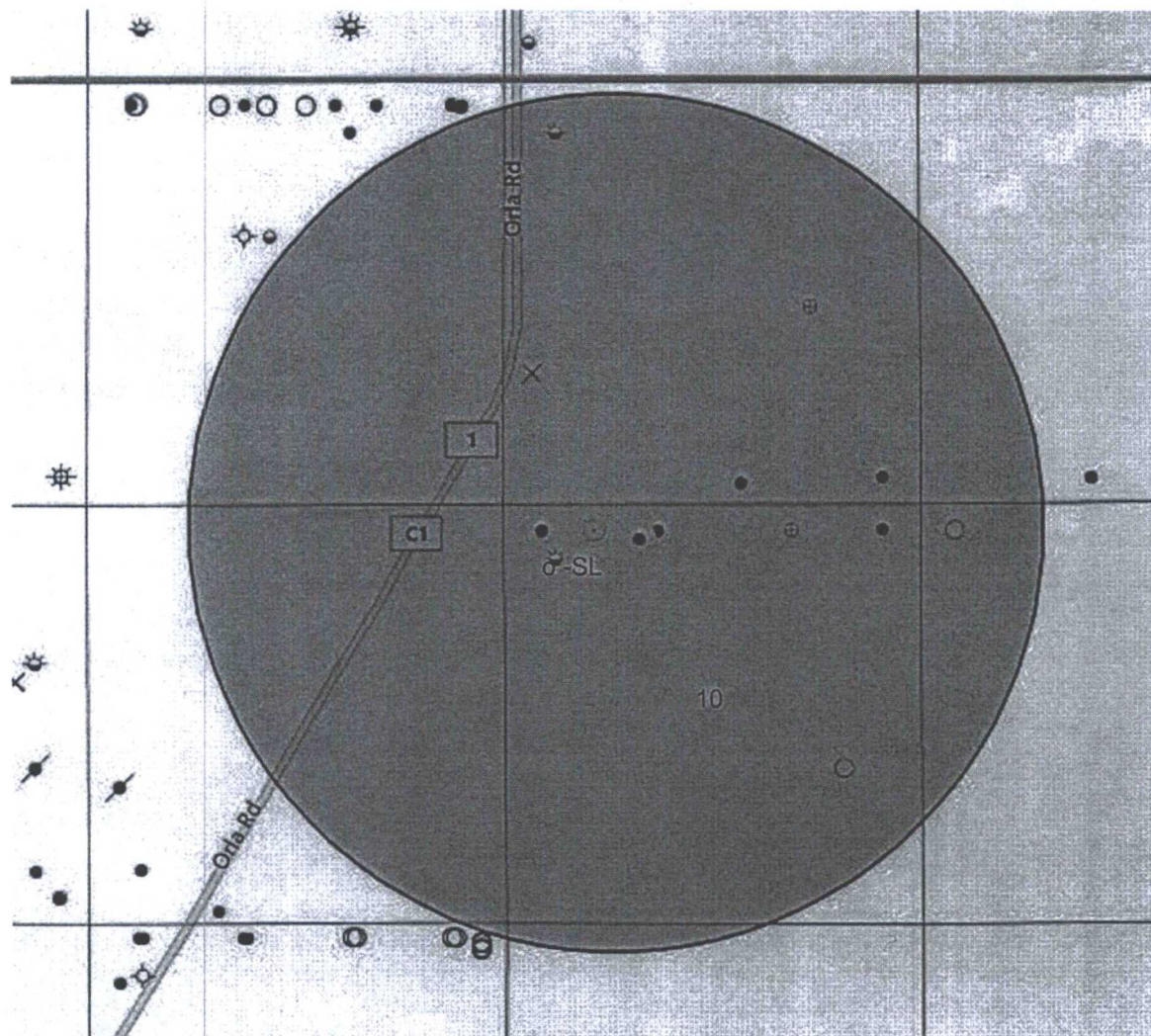
NENW

SENE

SWNW

SENW

Goog



- Drilling (Well Start)
- × Abandoned Location (Permit)
- ★ Gas Well
- Oil Well
- ★ Oil and Gas Well
- Other (Observation, etc)
- Injection Well
- Suspended
- ★ Plugged Gas Well
- ★ Plugged Oil Well
- ★ Plugged Oil and Gas
- Dry Hole (No Shows)
- ★ Dry Hole w/Gas Show
- ★ Dry Hole w/Oil Show
- ★ Dry Hole w/Oil and Gas Show

Exhibit "4" - SL - Red Hills West Unit #017H - Sec. 10 T26S R32E, Lea Co. NM

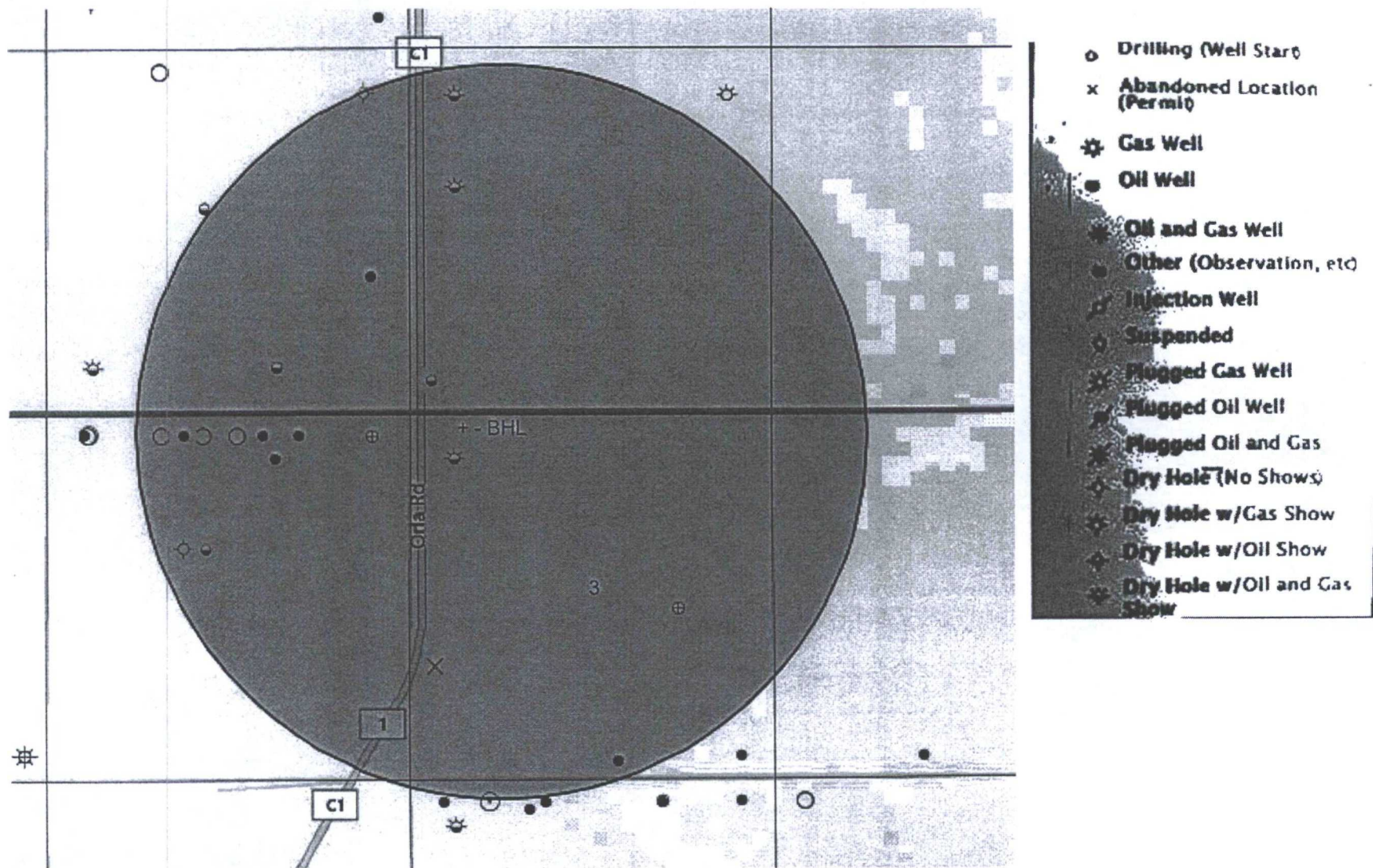


Exhibit "4A" - BHL - Red Hills West Unit #017H - Sec. 3 T26S R32E, Lea Co. NM