

District I
1625 N. French Dr., Hobbs, NM 88240
Phone: (575) 393-6161 Fax: (575) 393-0720
District II
811 S. First St., Artesia, NM 88210
Phone: (575) 748-1283 Fax: (575) 748-9720
District III
1000 Rio Brazos Road, Aztec, NM 87410
Phone: (505) 334-6178 Fax: (505) 334-6170
District IV
1220 S. St. Francis Dr., Santa Fe, NM 87505
Phone: (505) 476-3460 Fax: (505) 476-3462

State of New Mexico
Energy, Minerals & Natural Resources Department
OIL CONSERVATION DIVISION
1220 South St. Francis Dr.
Santa Fe, NM 87505

Form C-102
Revised August 1, 2011
Submit one copy to appropriate
District Office

☐ AMENDED REPORT

WELL LOCATION AND ACREAGE DEDICATION PLAT

¹ API Number 30-025-43432		² Pool Code 59900	³ Pool Name Triple X; Bone Spring
⁴ Property Code	⁵ Property Name THISTLE UNIT		⁶ Well Number 7H
⁷ OGRID No. 6137	⁸ Operator Name DEVON ENERGY PRODUCTION COMPANY, L.P.		⁹ Elevation 3650.5

¹⁰ Surface Location

UL or lot no.	Section	Township	Range	Lot Idn	Feet from the	North/South line	Feet from the	East/West line	County
P	33	23 S	33 E		124	SOUTH	883	EAST	LEA

¹¹ Bottom Hole Location If Different From Surface

UL or lot no.	Section	Township	Range	Lot Idn	Feet from the	North/South line	Feet from the	East/West line	County
J	28	23 S	33 E		2630	SOUTH	1340	EAST	LEA

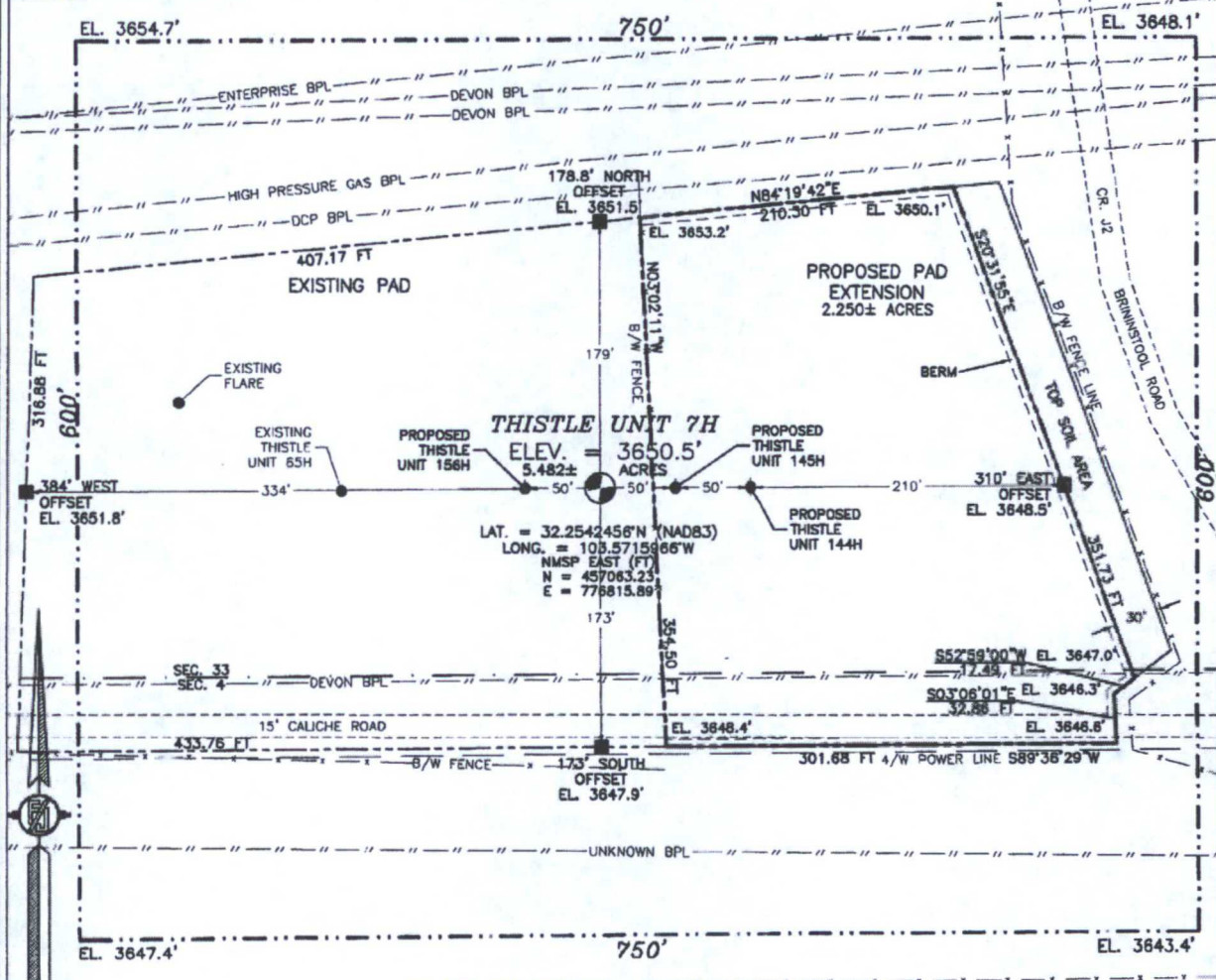
¹² Dedicated Acres 240	¹³ Joint or Infill	¹⁴ Consolidation Code	¹⁵ Order No.
---	-------------------------------	----------------------------------	-------------------------

No allowable will be assigned to this completion until all interests have been consolidated or a non-standard unit has been approved by the division.

<p>NW CORNER SEC. 28 LAT. = 32.2829532°N LONG. = 103.5858118°W NMSP EAST (FT) N = 467476.07 E = 772348.86</p> <p>W/4 CORNER SEC. 28 LAT. = 32.2756952°N LONG. = 103.5858099°W NMSP EAST (FT) N = 464835.64 E = 772367.62</p> <p>SECTION CORNER LAT. = 32.2684591°N LONG. = 103.5858093°W NMSP EAST (FT) N = 462203.15 E = 772386.14</p> <p>W/4 CORNER SEC. 33 LAT. = 32.2811767°N LONG. = 103.5858055°W NMSP EAST (FT) N = 459553.86 E = 772405.77</p> <p>SW CORNER SEC. 33 LAT. = 32.2539176°N LONG. = 103.5858020°W NMSP EAST (FT) N = 456913.03 E = 772425.25</p>		<p>N/4 CORNER SEC. 28 LAT. = 32.2829531°N LONG. = 103.5772866°W NMSP EAST (FT) N = 467494.48 E = 774983.29</p> <p>SEC. 28</p> <p>BOTTOM OF HOLE LAT. = 32.2756742°N LONG. = 103.5730868°W NMSP EAST (FT) N = 464855.62 E = 776299.37</p> <p>QUARTER CORNER LAT. = 32.2684508°N LONG. = 103.5772746°W NMSP EAST (FT) N = 462218.61 E = 776024.12</p> <p>NOTE: LATITUDE AND LONGITUDE COORDINATES ARE SHOWN USING THE NORTH AMERICAN DATUM OF 1983 (NAD83). LISTED NEW MEXICO STATE PLANE EAST COORDINATES ARE GRID (NAD83). BASIS OF BEARING AND DISTANCES USED ARE NEW MEXICO STATE PLANE EAST COORDINATES MODIFIED TO THE SURFACE. ELEVATION VALUES ARE NAVD 88.</p> <p>W/4 CORNER SEC. 33 LAT. = 32.2539073°N LONG. = 103.5772780°W NMSP EAST (FT) N = 456927.75 E = 775060.40</p>		<p>NE CORNER SEC. 28 LAT. = 32.2829508°N LONG. = 103.5687577°W NMSP EAST (FT) N = 467512.38 E = 777619.12</p> <p>E/4 CORNER SEC. 28 LAT. = 32.2756899°N LONG. = 103.5687542°W NMSP EAST (FT) N = 464870.84 E = 777639.03</p> <p>SECTION CORNER LAT. = 32.2684420°N LONG. = 103.5687493°W NMSP EAST (FT) N = 462234.08 E = 777659.34</p> <p>E/4 CORNER SEC. 33 LAT. = 32.2611708°N LONG. = 103.5687420°W NMSP EAST (FT) N = 459588.58 E = 777680.44</p> <p>SE CORNER SEC. 33 LAT. = 32.2539037°N LONG. = 103.5687408°W NMSP EAST (FT) N = 456945.13 E = 777699.63</p>		<p>¹⁶ OPERATOR CERTIFICATION</p> <p>I hereby certify that the information contained herein is true and complete to the best of my knowledge and belief, and that this organization either owns a working interest or unleased mineral interest in the land including the proposed bottom hole location or has a right to drill this well at this location pursuant to a contract with an owner of such a mineral or working interest, or to a voluntary pooling agreement or a compulsory pooling order heretofore entered by the division.</p> <p><i>Rebecca Deal</i> 9/27/2016 Signature Date</p> <p>Rebecca Deal, Regulatory Analyst Printed Name</p> <p>rebecca.deal@dvn.com E-mail Address</p> <p>¹⁷ SURVEYOR CERTIFICATION</p> <p>I hereby certify that the well location shown on this plat was plotted from field notes of actual surveys made by me or under my supervision, and that the same is true and correct to the best of my belief.</p> <p>SEPTEMBER 26, 2016 Date of Survey</p> <p><i>FILMON F. JARAMILLO</i> Signature and Seal of Professional Surveyor</p> <p>Certificate Number: 12797 SURVEY NO. 4721A</p>
--	--	--	--	--	--	---

**SECTION 33, TOWNSHIP 23 SOUTH, RANGE 33 EAST, N.M.P.M.
LEA COUNTY, STATE OF NEW MEXICO
SITE MAP**

NOTE: LATITUDE AND LONGITUDE COORDINATES ARE SHOWN USING THE NORTH AMERICAN DATUM OF 1983 (NAD83). LISTED NEW MEXICO STATE PLANE EAST COORDINATES ARE GRID (NAD83). BASIS OF BEARING AND DISTANCES USED ARE NEW MEXICO STATE PLANE EAST COORDINATES MODIFIED TO THE SURFACE. ELEVATION VALUES ARE NAVD 88.



010 55 110 220

SCALE 1" = 110'

DIRECTIONS TO LOCATION

FROM STATE HWY. 128 AND CR. J2 (BRINSTOOL) GO NORTH ON J2 3.0 MILES, TURN LEFT ON CALICHE ROAD AND GO WEST 147' TO THE SOUTHEAST PAD CORNER FOR THIS LOCATION.

DEVON ENERGY PRODUCTION COMPANY, L.P.

THISTLE UNIT 7H

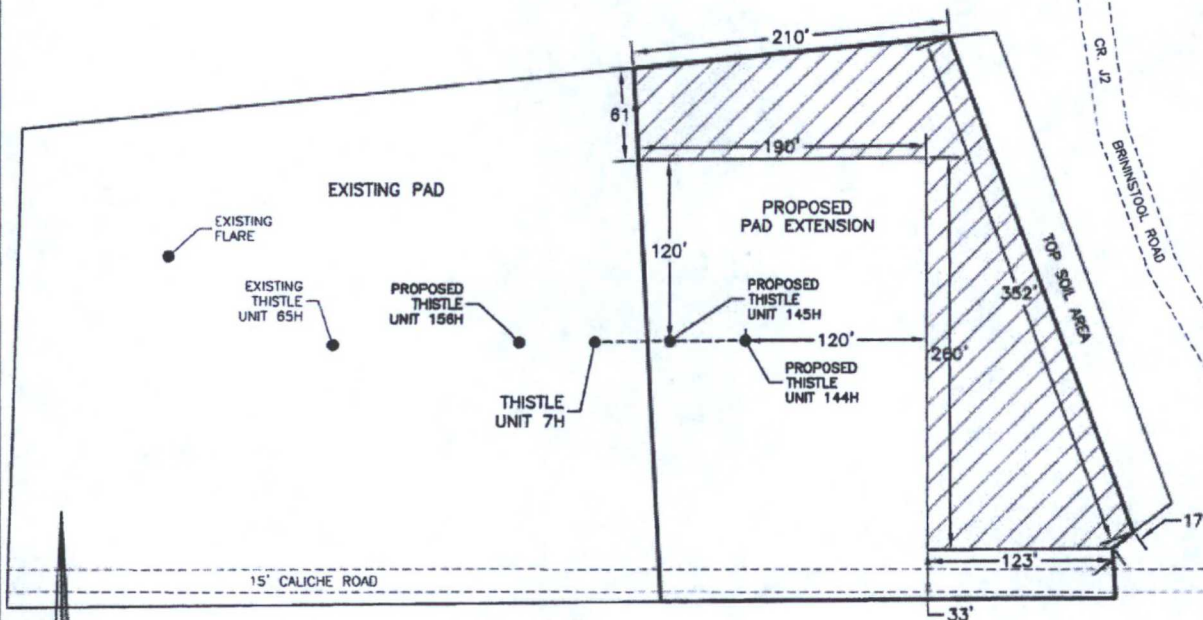
LOCATED 124 FT. FROM THE SOUTH LINE
AND 883 FT. FROM THE EAST LINE OF
SECTION 33, TOWNSHIP 23 SOUTH,
RANGE 33 EAST, N.M.P.M.
LEA COUNTY, STATE OF NEW MEXICO

SEPTEMBER 26, 2016

SURVEY NO. 4721A

MADRON SURVEYING, INC. 301 SOUTH CANAL (975) 234-3341 CARLSBAD, NEW MEXICO

**PROPOSED INTERIM SITE RECLAMATION
FOR THISTLE UNIT 7H**
SECTION 33, TOWNSHIP 23 SOUTH, RANGE 33 EAST, N.M.P.M.
LEA COUNTY, STATE OF NEW MEXICO



 DENOTES
RECLAMATION AREA
0.923± ACRES RECLAMATION AREA



0 10 50 100 200
SCALE 1" = 100'

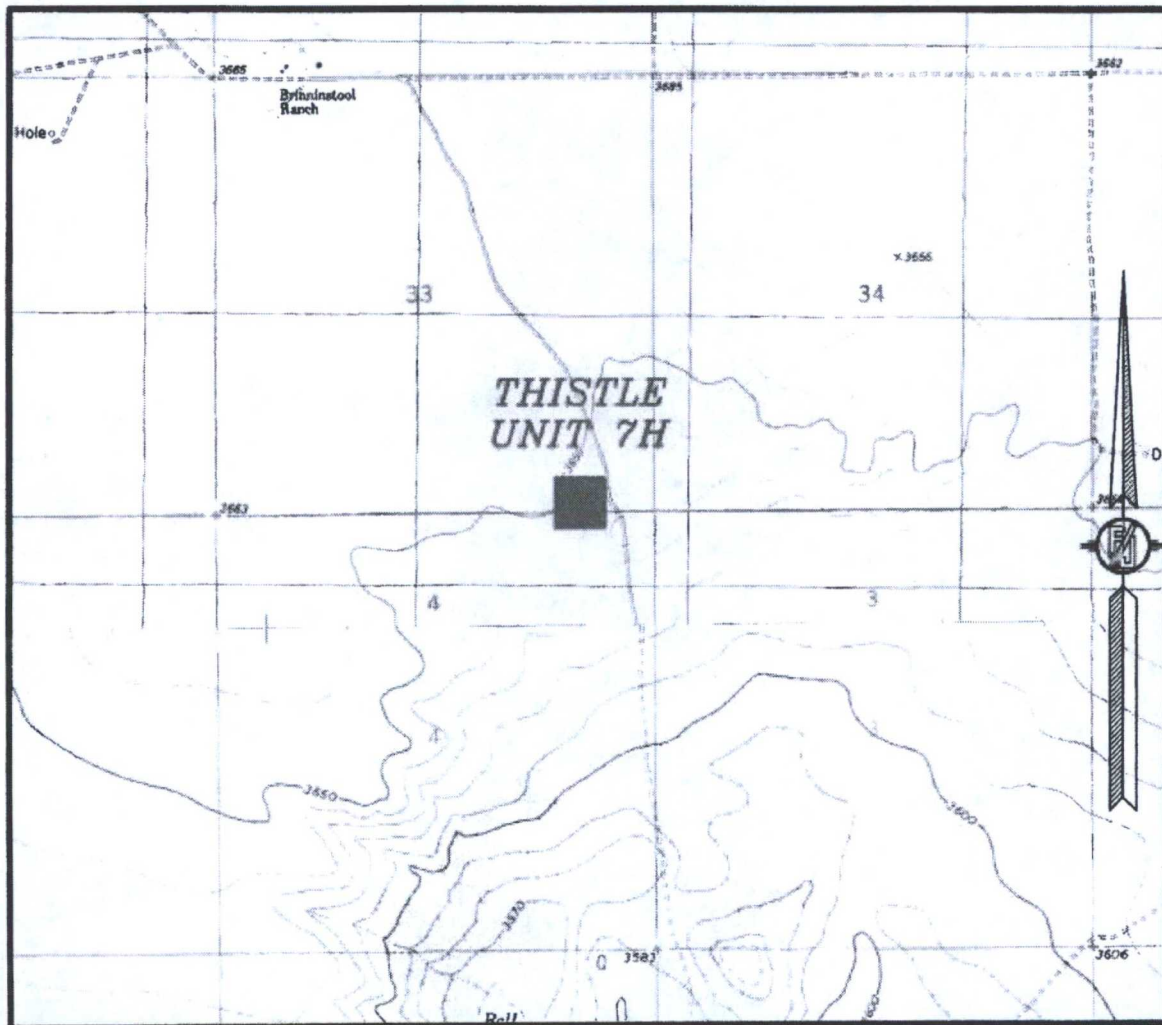
DEVON ENERGY PRODUCTION COMPANY, L.P.
THISTLE UNIT 7H
LOCATED 124 FT. FROM THE SOUTH LINE
AND 883 FT. FROM THE EAST LINE OF
SECTION 33, TOWNSHIP 23 SOUTH,
RANGE 33 EAST, N.M.P.M.
LEA COUNTY, STATE OF NEW MEXICO

SEPTEMBER 26, 2016

SURVEY NO. 4721A

MADRON SURVEYING, INC. 301 SOUTH CANAL (575) 234-3341 **CARLSBAD, NEW MEXICO**

SECTION 33, TOWNSHIP 23 SOUTH, RANGE 33 EAST, N.M.P.M.
LEA COUNTY, STATE OF NEW MEXICO
LOCATION VERIFICATION MAP



USGS QUAD MAP:
TIP TOP WELLS

NOT TO SCALE

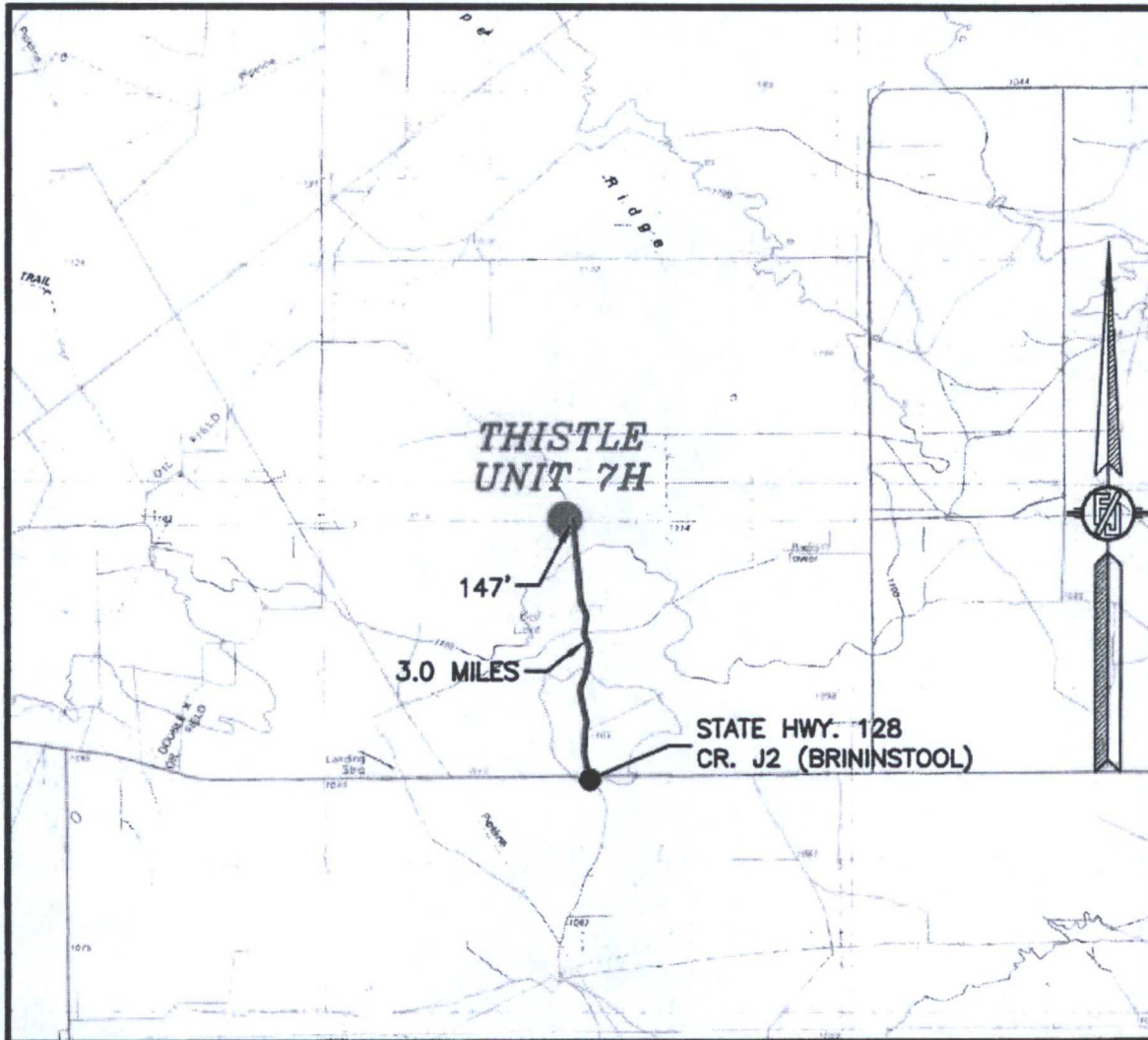
DEVON ENERGY PRODUCTION COMPANY, L.P.
THISTLE UNIT 7H

LOCATED 124 FT. FROM THE SOUTH LINE
AND 883 FT. FROM THE EAST LINE OF
SECTION 33, TOWNSHIP 23 SOUTH,
RANGE 33 EAST, N.M.P.M.
LEA COUNTY, STATE OF NEW MEXICO

SEPTEMBER 26, 2016

MADRON SURVEYING, INC. 301 SOUTH CANAL (575) 234-3341 CARLSBAD, NEW MEXICO
SURVEY NO. 4721A

SECTION 33, TOWNSHIP 23 SOUTH, RANGE 33 EAST, N.M.P.M.
LEA COUNTY, STATE OF NEW MEXICO
VICINITY MAP



DISTANCES IN MILES

NOT TO SCALE

DIRECTIONS TO LOCATION

FROM STATE HWY. 128 AND CR. J2 (BRININSTOOL) GO NORTH ON J2 3.0 MILES, TURN LEFT ON CALICHE ROAD AND GO WEST 147' TO THE SOUTHEAST PAD CORNER FOR THIS LOCATION.

**DEVON ENERGY PRODUCTION COMPANY, L.P.
THISTLE UNIT 7H**

LOCATED 124 FT. FROM THE SOUTH LINE
AND 883 FT. FROM THE EAST LINE OF
SECTION 33, TOWNSHIP 23 SOUTH,
RANGE 33 EAST, N.M.P.M.
LEA COUNTY, STATE OF NEW MEXICO

SEPTEMBER 26, 2016

MADRON SURVEYING, INC.

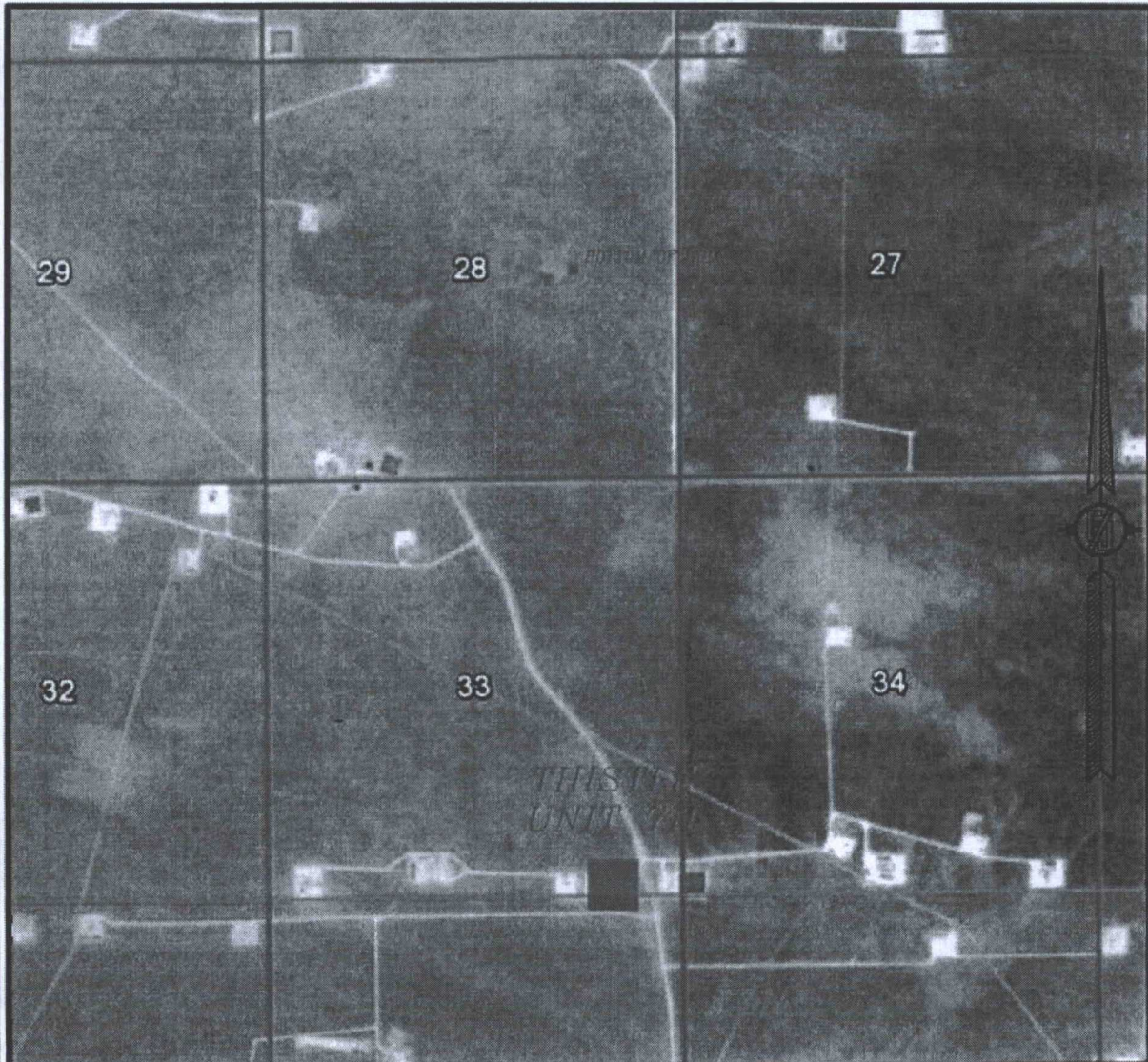
301 SOUTH CANAL
(575) 234-3341

CARLSBAD, NEW MEXICO

SURVEY NO. 4721A

SECTION 33, TOWNSHIP 23 SOUTH, RANGE 33 EAST, N.M.P.M.
LEA COUNTY, STATE OF NEW MEXICO

AERIAL PHOTO



NOT TO SCALE
AERIAL PHOTO:
GOOGLE EARTH
FEB. 2014

**DEVON ENERGY PRODUCTION COMPANY, L.P.
THISTLE UNIT 7H**

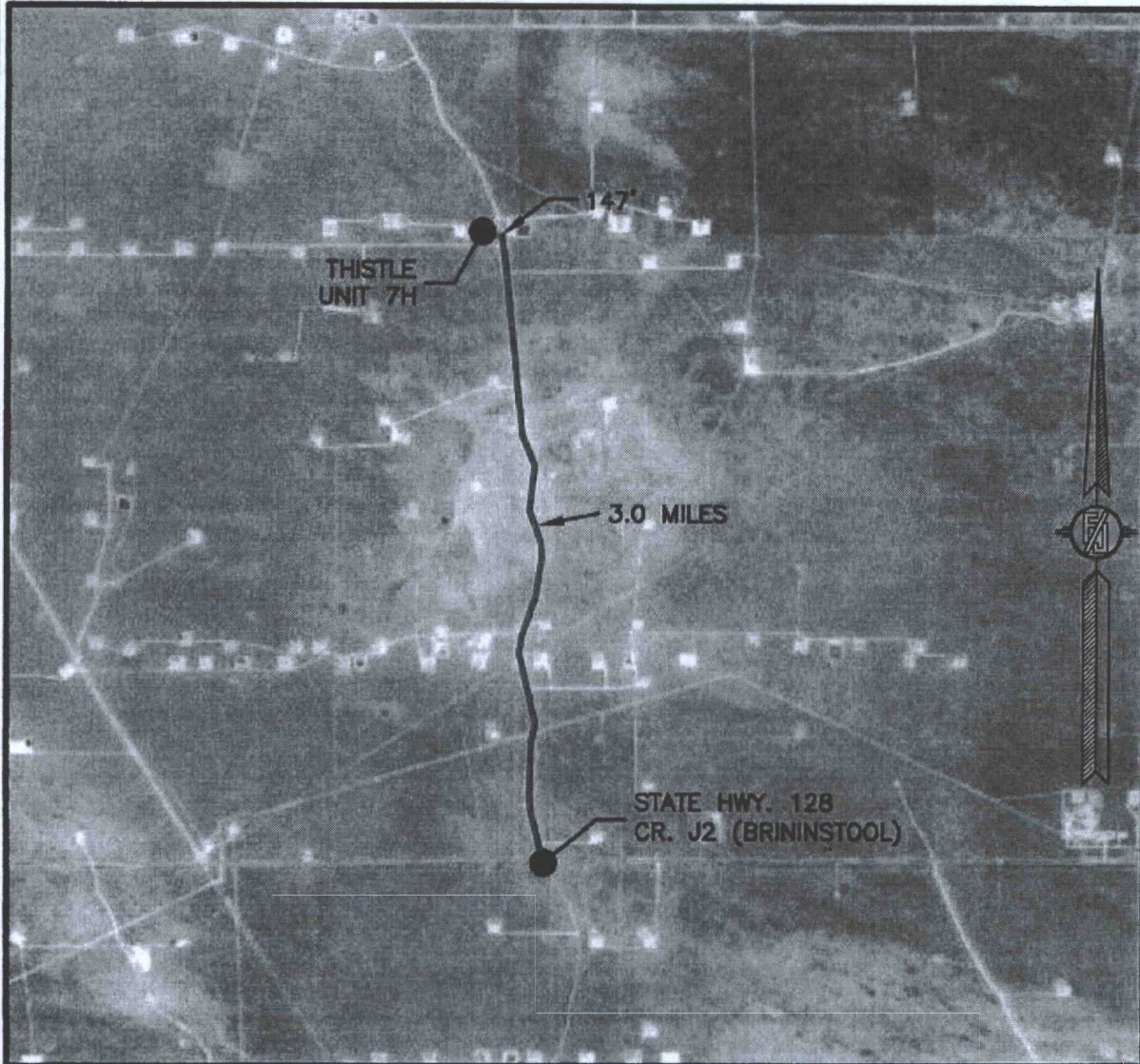
LOCATED 124 FT. FROM THE SOUTH LINE
AND 883 FT. FROM THE EAST LINE OF
SECTION 33, TOWNSHIP 23 SOUTH,
RANGE 33 EAST, N.M.P.M.
LEA COUNTY, STATE OF NEW MEXICO

SEPTEMBER 26, 2016

SURVEY NO. 4721A

MADRON SURVEYING, INC. 301 SOUTH CANAL (575) 234-3341 CARLSBAD, NEW MEXICO

SECTION 33, TOWNSHIP 23 SOUTH, RANGE 33 EAST, N.M.P.M.
LEA COUNTY, STATE OF NEW MEXICO
AERIAL ACCESS ROUTE MAP



NOT TO SCALE
AERIAL PHOTO:
GOOGLE EARTH
FEB. 2014

**DEVON ENERGY PRODUCTION COMPANY, L.P.
THISTLE UNIT 7H**

LOCATED 124 FT. FROM THE SOUTH LINE
AND 883 FT. FROM THE EAST LINE OF
SECTION 33, TOWNSHIP 23 SOUTH,
RANGE 33 EAST, N.M.P.M.
LEA COUNTY, STATE OF NEW MEXICO

SEPTEMBER 26, 2016

SURVEY NO. 4721A

MADRON SURVEYING, INC. 301 SOUTH CANAL (575) 234-3341 CARLSBAD, NEW MEXICO