

UNITED STATES
DEPARTMENT OF THE INTERIOR
BUREAU OF LAND MANAGEMENTCarlsbad Field Office
OCD HobbsFORM APPROVED
OMB No. 1004-0137
Expires: July 31, 2010

WELL COMPLETION OR RECOMPLETION REPORT AND LOG

5. Lease Serial No.
NMNM112940

- 1a. Type of Well ☐ Oil Well ☐ Gas Well ☐ Dry ☒ Other: INJ
b. Type of Completion ☐ New Well ☐ Work Over ☐ Deepen ☐ Plug Back ☒ Diff. Resvr.
Other _____

6. If Indian, Allottee or Tribe Name

7. Unit or CA Agreement Name and No.

2. Name of Operator
OWL SWD OPERATING LLCContact: KATY WELCH
E-Mail: katy@oilfieldwaterlogistics.com8. Lease Name and Well No.
BRINSTOOL 25 FEDERAL 13. Address 8214 WESTCHESTER DR STE 850
DALLAS, TX 752553a. Phone No. (include area code)
Ph: 432-234-04279. API Well No.
30-025-37582-00-S2

4. Location of Well (Report location clearly and in accordance with Federal requirements)*

At surface SENE 1980FNL 660FEL 32.277457 N Lat, 103.519626 W Lon

At top prod interval reported below SENE 1980FNL 660FEL 32.277457 N Lat, 103.519626 W Lon

At total depth SENE 1980FNL 660FEL 32.277457 N Lat, 103.519626 W Lon

10. Field and Pool, or Exploratory
SWD11. Sec., T., R., M., or Block and Survey
or Area Sec 25 T23S R33E Mer NMP12. County or Parish
LEA13. State
NM14. Date Spudded
05/27/201515. Date T.D. Reached
06/26/201516. Date Completed
☐ D & A ☐ Ready to Prod.
07/21/201517. Elevations (DF, KB, RT, GL)*
3626 GL18. Total Depth: MD
TVD 1403019. Plug Back T.D.: MD
TVD 759120. Depth Bridge Plug Set: MD
TVD21. Type Electric & Other Mechanical Logs Run (Submit copy of each)
GR CCL CBL22. Was well cored? ☒ No ☐ Yes (Submit analysis)
Was DST run? ☒ No ☐ Yes (Submit analysis)
Directional Survey? ☒ No ☐ Yes (Submit analysis)

23. Casing and Liner Record (Report all strings set in well)

Hole Size	Size/Grade	Wt. (#/ft.)	Top (MD)	Bottom (MD)	Stage Cementer Depth	No. of Sk. & Type of Cement	Slurry Vol. (BBL)	Cement Top*	Amount Pulled
8.750	7.000 P-110	26.0	0	782	780	120		0	782
17.500	13.375 H-40	48.0	0	865		1020		0	
12.250	9.625 J-55	40.0	0	5127		1700		0	
8.750	7.000 P-110	26.0	782	11908	7992	1700		782	
6.125	4.500 P-110	13.5	7810	14030		275		7810	7810

24. Tubing Record

Size	Depth Set (MD)	Packer Depth (MD)	Size	Depth Set (MD)	Packer Depth (MD)	Size	Depth Set (MD)	Packer Depth (MD)
4.500	5227	5232						

25. Producing Intervals

26. Perforation Record

Formation	Top	Bottom	Perforated Interval	Size	No. Holes	Perf. Status
BELL CANYON-CHERRY CANYON			5300 TO 5450	0.000	516	OPEN
B) DELAWARE	5300	6280	5640 TO 5740	0.000	344	OPEN
C)			5872 TO 6035	0.000	526	OPEN
D)			6160 TO 6280	0.000	414	OPEN

27. Acid, Fracture, Treatment, Cement Squeeze, Etc.

Depth Interval	Amount and Type of Material
5300 TO 6280	15,300 GAL 15% HCL + 3000 GEL BRINE; FLUSH W/ 112 BBLs KCL; 4.6 BPM @ 1206 PSI; ISIP 695 PSI

28. Production - Interval A

Date First Produced	Test Date	Hours Tested	Test Production	Oil BBL	Gas MCF	Water BBL	Oil Gravity Corr. API	Gas Gravity	Production Method
			→						
Choke Size	Tbg. Press. Flwg. SI	Csg. Press.	24 Hr. Rate	Oil BBL	Gas MCF	Water BBL	Gas:Oil Ratio	Well Status	
			→						

28a. Production - Interval B

Date First Produced	Test Date	Hours Tested	Test Production	Oil BBL	Gas MCF	Water BBL	Oil Gravity Corr. API	Gas Gravity	Production Method
			→						
Choke Size	Tbg. Press. Flwg. SI	Csg. Press.	24 Hr. Rate	Oil BBL	Gas MCF	Water BBL	Gas:Oil Ratio	Well Status	
			→						

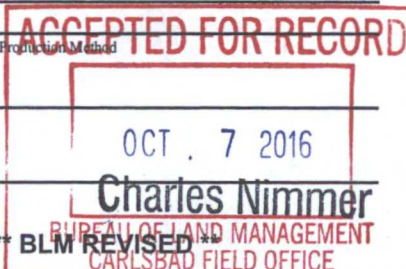
(See Instructions and spaces for additional data on reverse side)

ELECTRONIC SUBMISSION #337698 VERIFIED BY THE BLM WELL INFORMATION SYSTEM

** BLM REVISED ** BLM REVISED ** BLM REVISED ** BLM REVISED ** BLM REVISED

BUREAU OF LAND MANAGEMENT
CARLSBAD FIELD OFFICE

Reclamation Due by 01/21/2016



28b. Production - Interval C

Date First Produced	Test Date	Hours Tested	Test Production →	Oil BBL	Gas MCF	Water BBL	Oil Gravity Corr. API	Gas Gravity	Production Method
Choke Size	Tbg. Press. Flwg. SI	Csg. Press.	24 Hr. Rate →	Oil BBL	Gas MCF	Water BBL	Gas:Oil Ratio	Well Status	

28c. Production - Interval D

Date First Produced	Test Date	Hours Tested	Test Production →	Oil BBL	Gas MCF	Water BBL	Oil Gravity Corr. API	Gas Gravity	Production Method
Choke Size	Tbg. Press. Flwg. SI	Csg. Press.	24 Hr. Rate →	Oil BBL	Gas MCF	Water BBL	Gas:Oil Ratio	Well Status	

29. Disposition of Gas(Sold, used for fuel, vented, etc.)
CAPTURED

30. Summary of Porous Zones (Include Aquifers):

Show all important zones of porosity and contents thereof: Cored intervals and all drill-stem tests, including depth interval tested, cushion used, time tool open, flowing and shut-in pressures and recoveries.

31. Formation (Log) Markers

Formation	Top	Bottom	Descriptions, Contents, etc.	Name	Top Meas. Depth
UNKNOWN		130	UNCONSOLIDATED SAND, GRAVEL	RUSTLER	1182
RUSTLER	860	1182	SHALE	BELL CANYON	5170
SALADO	1182	3520	ANHYDRITE, SALT, DOLOMITE	CHERRY CANYON	6008
TOP OF SALT	3520	5080	ANHYDRITE, SALT	BRUSHY CANYON	7487
LAMAR LS	5080	5170	SAND	BONE SPRING	8726
DELAWARE	5170	8726	SANDSTONE, LIMESTONE, SHALE	WOLFCAMP	11586
				ATOKA	12660

32. Additional remarks (include plugging procedure):

Well in on disposal avg. 10000 bwvd @ 790 psi surface per NMOCD order SWD-1364.

Documented completion is the result of two workovers performed 9/04/14 to 12/31/14 and then Temporarily Abandoned per BLM on 2/11/15. Well was reentered upon approval of paperwork and activity compliance. Reentry on 5/27/15 (on approved sundry), configured for SWD and MIT pressure test on 7/22/15. (Both sundries for config and MIT were approved; MIT witnessed by Jack Johnson, BLM

33. Circle enclosed attachments:

- | | | | |
|---|--------------------|---------------|-----------------------|
| 1. Electrical/Mechanical Logs (1 full set req'd.) | 2. Geologic Report | 3. DST Report | 4. Directional Survey |
| 5. Sundry Notice for plugging and cement verification | 6. Core Analysis | 7. Other: | |

34. I hereby certify that the foregoing and attached information is complete and correct as determined from all available records (see attached instructions):

Electronic Submission #337698 Verified by the BLM Well Information System.

For OWL SWD OPERATING LLC, sent to the Hobbs

Committed to AFMSS for processing by CHARLES NIMMER on 10/07/2016 (17CN0004SE)

Name (please print) BEN STONE

Title AGENT / CONSULTANT

Signature _____ (Electronic Submission)

Date 04/27/2016

Title 18 U.S.C. Section 1001 and Title 43 U.S.C. Section 1212, make it a crime for any person knowingly and willfully to make to any department or agency of the United States any false, fictitious or fraudulent statements or representations as to any matter within its jurisdiction.

**** REVISED ** REVISED ** REVISED ** REVISED ** REVISED ** REVISED ** REVISED ** REVISED ****

Additional data for transaction #337698 that would not fit on the form

32. Additional remarks, continued

Data on this completion report accurately documents the current completion status of the wellbore subsequent to all recent work during 2015.

A Radial Cement Bond Log, run 12/22/14 has been submitted; a strip of that log across the subject portion of the well is attached and made part of this completion report.

A Current Wellbore Diagram is also included and reflects the data contained herein.

WELL SCHEMATIC - CURRENT

Brininstool 25 Federal No.1 SWD

API 30-025-37582

1980' FNL & 660' FEL, SEC. 25-T23S-R33E
LEA COUNTY, NEW MEXICO

Pool: 96802: SWD; Bell Canyon-Cherry Canyon

Spud Date: 1/29/2006

Re-entry Dt: 5/27/2015

TA Date: 2/11/2015

SWD Ready Dt: 7/22/2015

Annulus Monitored
or open to atmosphere

Injection Pressure Regulated
and Volumes Reported
1056 psi Max Surface*
NMOCD SWD-1364

*(Slight increase due to deeper top perf: 0.2 psi/ft)

(Previous Operations 12/26/14)

New 7.0" w/ Lead Bowl Overshot / Seal / Csg Patch @ 782'

Cut & Pulled Bad section of 7.0" @ 782'

Owl SWD Operating, LLC

Replug 4.5" Liner per NOI Operational Narrative 5/05/15

Modifications on Location Approved by BLM.

DO/CO to 11,950'. Spot 25 sx Cmt. Set CIBP @ 10,993' w 25 sx.

Run CBL 9000' to 7826'. Spot 50 sx 8794'; Tag @ 8391'.

qz holes/Spot Cmt Plug @ top of 4-1/2" stub. MIT 1200 ps

MIT Plugs Below. Perf 7366' to 5280'. Swab test / hydrocarbons. None.

Acidize w/ 15,000 gal. 15% HCl (Workstring)

Run 4.5" IC Tbg w/ PKR @ 5232'

Install Wellhead, Pump & Equipment.

Commence Injection per NMOCD SWD-1364

All Required Paperwork Filed Within 30 days.

Perforated Injection Interval: 5280' to 7366'

(Specific Intervals Based on Porosity Log Analysis)

(Permit allows 5223' to 7380')

MIT'd Final Plug - 1200 psi / 1 hr.

Spot 50 sx 7873'-7620' (Tagged)

+/- 50' Minimum Across 4.5" Stub

(4.5" Stub @ 7810')

Shoot Perfs @ 7860' for Bal Plug

9# Salt Gel Plugging Mud

TOC @ 10380'

Set CIBP @ 10993' w/25 sx Cmt

Spot 50 sx on CIBP Tag 11,496'

CIBP @ 11950' w/20' Cmt

CIBP @ 12057' w/20' Cmt

CIBP @ 12703' w/ 2 sx Cmt

CIBP @ 12940' w/ 2 sx Cmt

CIBP @ 13425' w/ 1 sx Cmt

CIBP @ 13710' w/20' Cmt

CIBP @ 13600' w/10' Cmt

CIBPs Previously Set

Current Operations
Previous Operations



Surface Casing

13.375", 48.0# Csg. (17.5" Hole) @ 865'

1020 sx - 17 sx Circulated to Surface

Intermediate Casing

9.625", 40.0# csg. (12.25" Hole) @ 5127'

1700 sx - 188 sx Circulated to Surface

NEW Prod. Casing (Run 12/26/14)

7.0", 26.0#, 8-rd. Csg. (8.75" Hole) 0'-782'

DV @ 780'; 120 sx CIs C - 17 sx Circ. to Surface

Production Casing

7.0", 26.0# csg. (8.75" Hole) @ 11908'

1700 sx - 188 sx Circulated to Surface

RCBL 12/22/2014 TOC @ 3860'

Production Casing (Abandoned Top @ 7810')


4.5", 13.5# Csg (6.125" Hole) @ 14030'

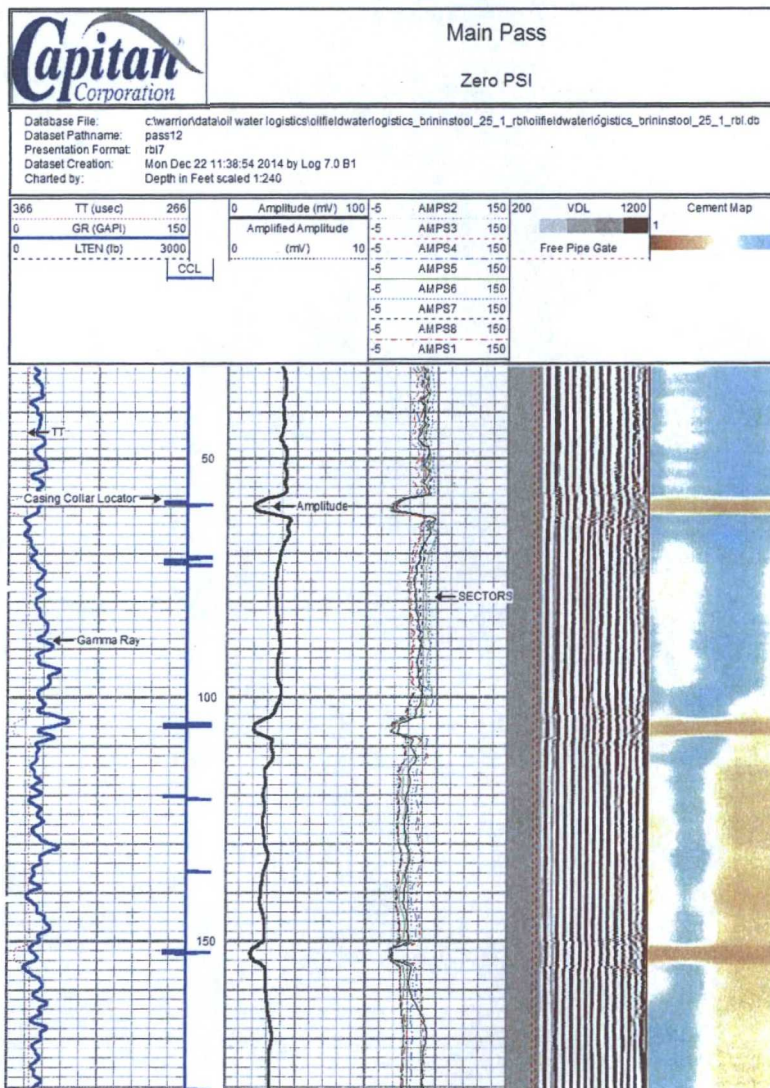
275 sx Prem 'H' - TOC @ 10380' by CBL

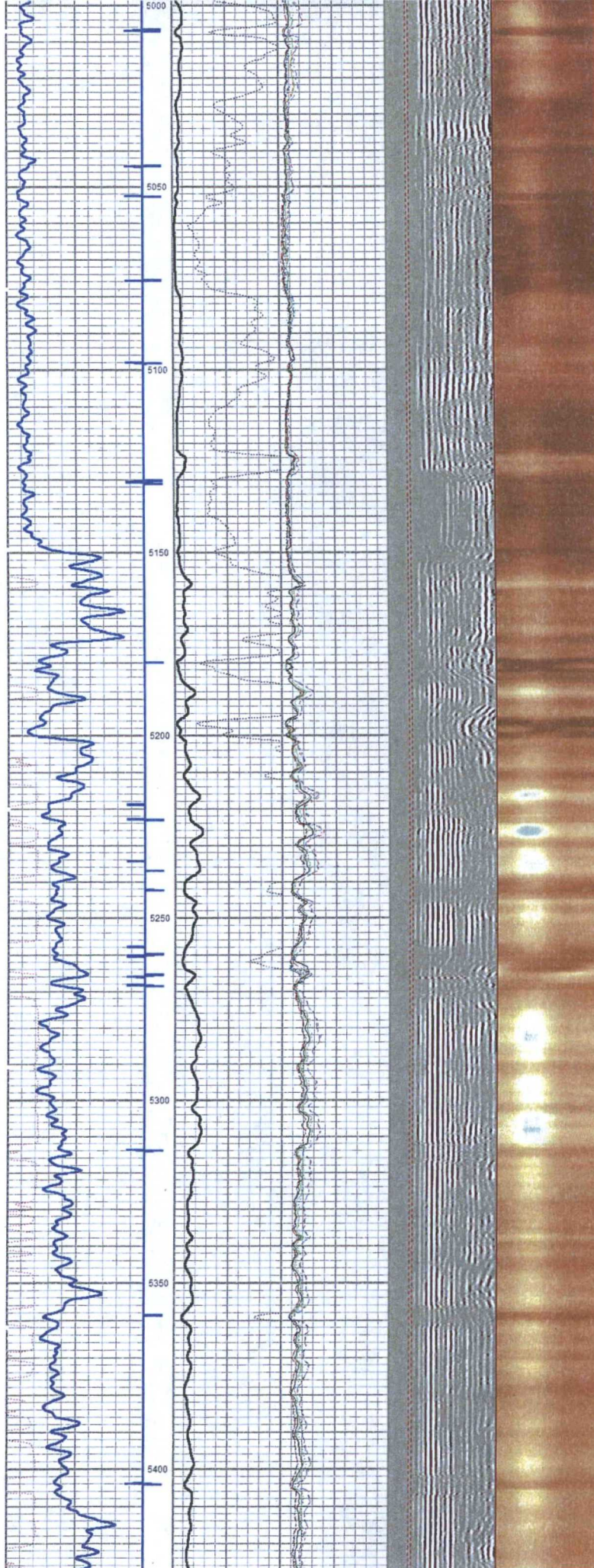


Drawn by: Ben Stone, Rvs'd 4/27/2016

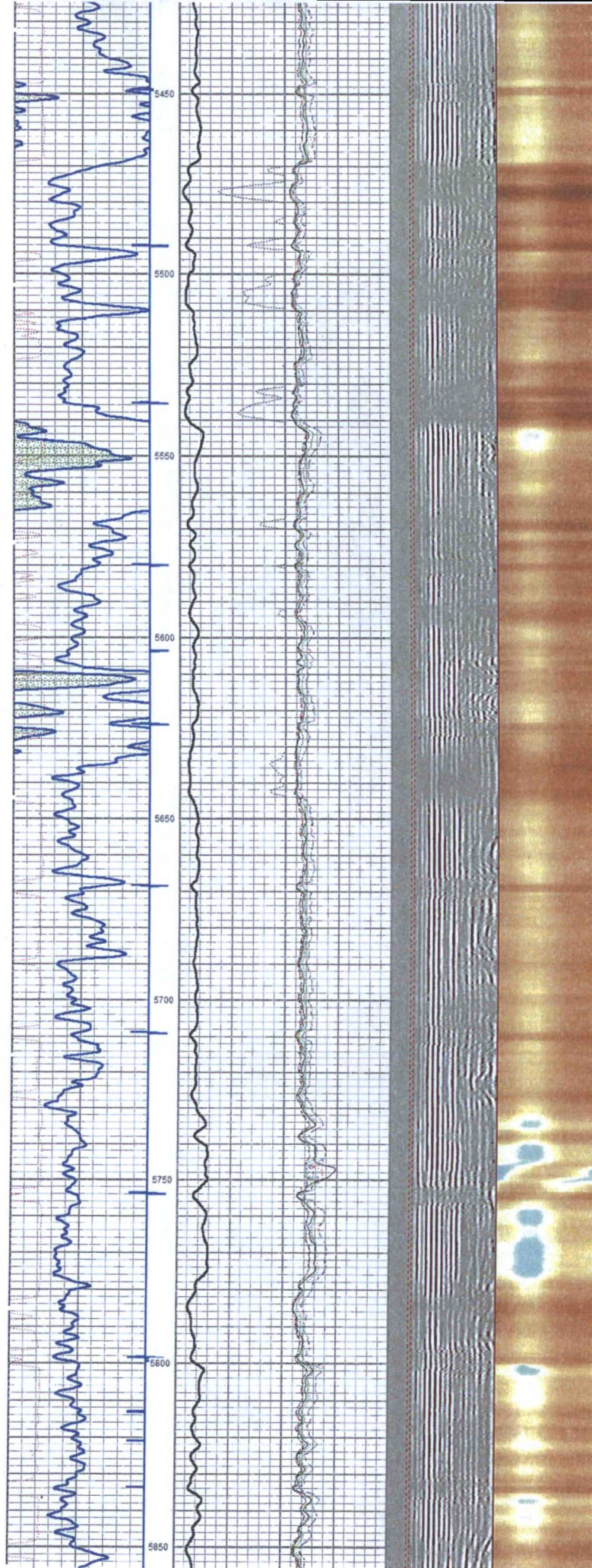
(To Document May-July 2015 Workover)

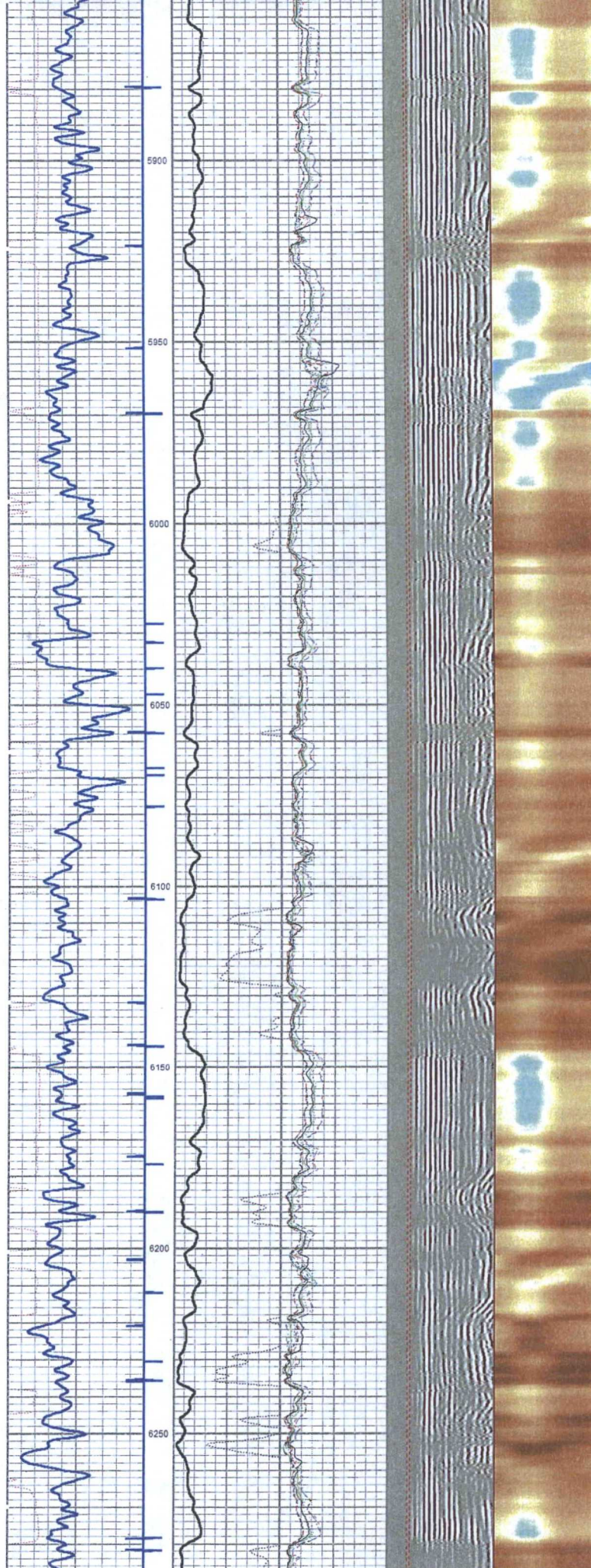
		Radial Cement Bond Gamma Ray CCL Log	
Company Oilfield Water Logistics Well Brininstool 25 # 1 Field County Lea State NM			
Location:		AP # :	
SEC N/A TYP N/A RGE N/A Permanent Datum Log Measured From Drilling Measured From		Ground level Elevation KB 13 APD KB CL	
Other Services		Elevation	
All interpretations are opinions based on inferences from electrical or other measurements and we cannot and do not guarantee the accuracy or correctness of any interpretation, and we shall not, except in the case of gross or willful negligence on our part, be liable or responsible for any loss, costs, damages, or expenses incurred or sustained by anyone resulting from any interpretation made by any of our officers, agents or employees. These interpretations are also subject to our general terms and conditions set out in our current Price Schedule.			
Comments			
*****Thank You For Using Capitan Wireline.*****			





TOP OF
SUBJECT INTERVAL
@ 5300'





BOTTOM OF
SUBJECT INTERVAL
@6280'

