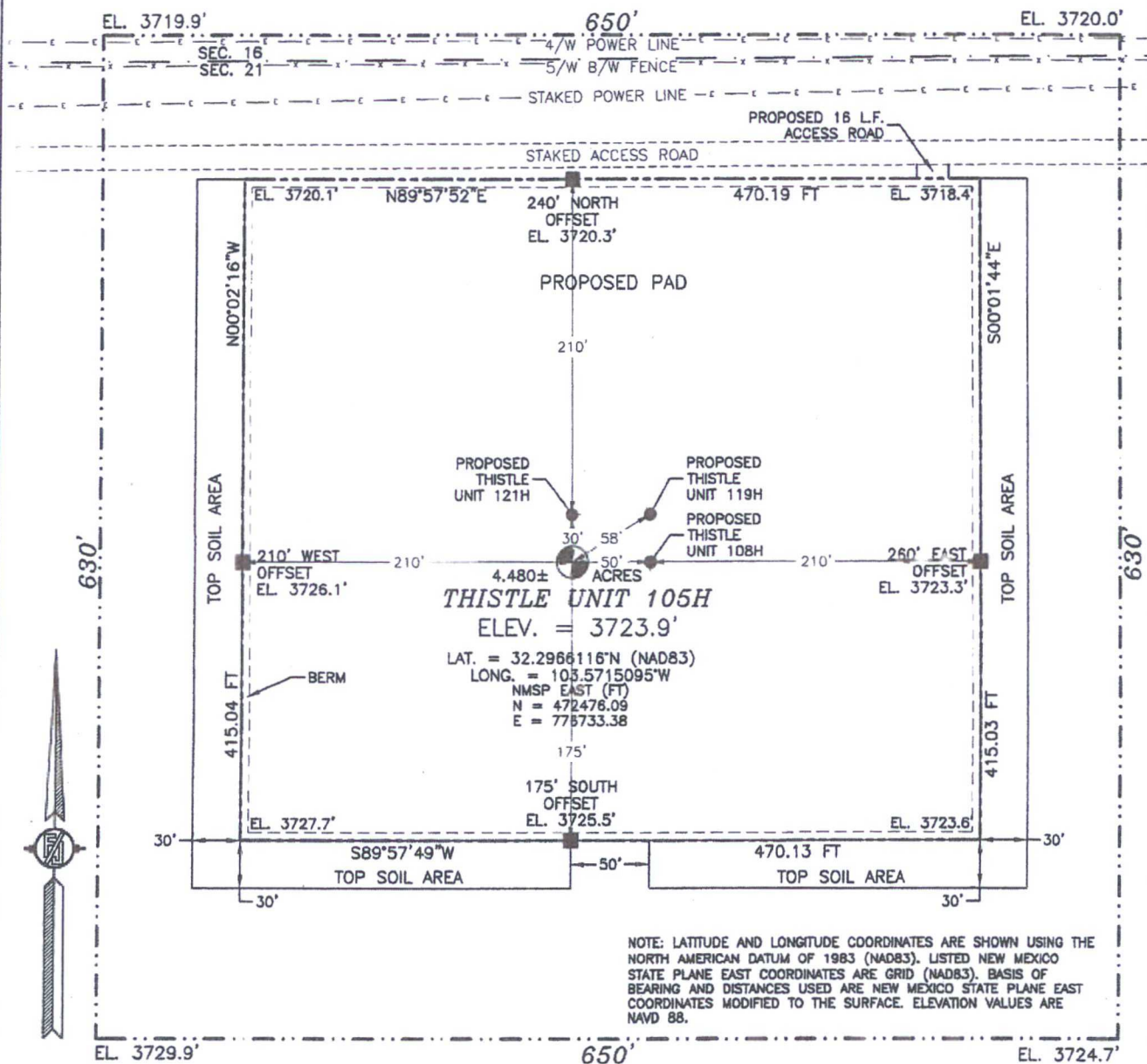


SECTION 21, TOWNSHIP 23 SOUTH, RANGE 33 EAST, N.M.P.M.
LEA COUNTY, STATE OF NEW MEXICO
SITE MAP



NOTE: LATITUDE AND LONGITUDE COORDINATES ARE SHOWN USING THE NORTH AMERICAN DATUM OF 1983 (NAD83). LISTED NEW MEXICO STATE PLANE EAST COORDINATES ARE GRID (NAD83). BASIS OF BEARING AND DISTANCES USED ARE NEW MEXICO STATE PLANE EAST COORDINATES MODIFIED TO THE SURFACE. ELEVATION VALUES ARE NAVD 88.

010 50 100 200
SCALE 1" = 100'

DIRECTIONS TO LOCATION

FROM STATE HWY 128 & CR 21 (DELAWARE BASIN) GO NORTH ON CR 21 FOR APPROX. 3.95 MILES, TURN LEFT ON XL ROAD AND GO WEST APPROX. 3.4 MILES, TURN RIGHT ON CALICHE LEASE ROAD AND GO NORTH APPROX. 0.9 OF A MILE, BEND LEFT AND GO NORTHWEST APPROX. 0.15 OF A MILE, BEND RIGHT AND GO NORTHEAST APPROX. 0.1 OF A MILE, BEND LEFT AND GO NORTH APPROX. 0.95 OF A MILE TO ROAD SURVEY, FOLLOW ROAD SURVEY WEST APPROX. 550' TO NORTHEAST CORNER OF PAD.

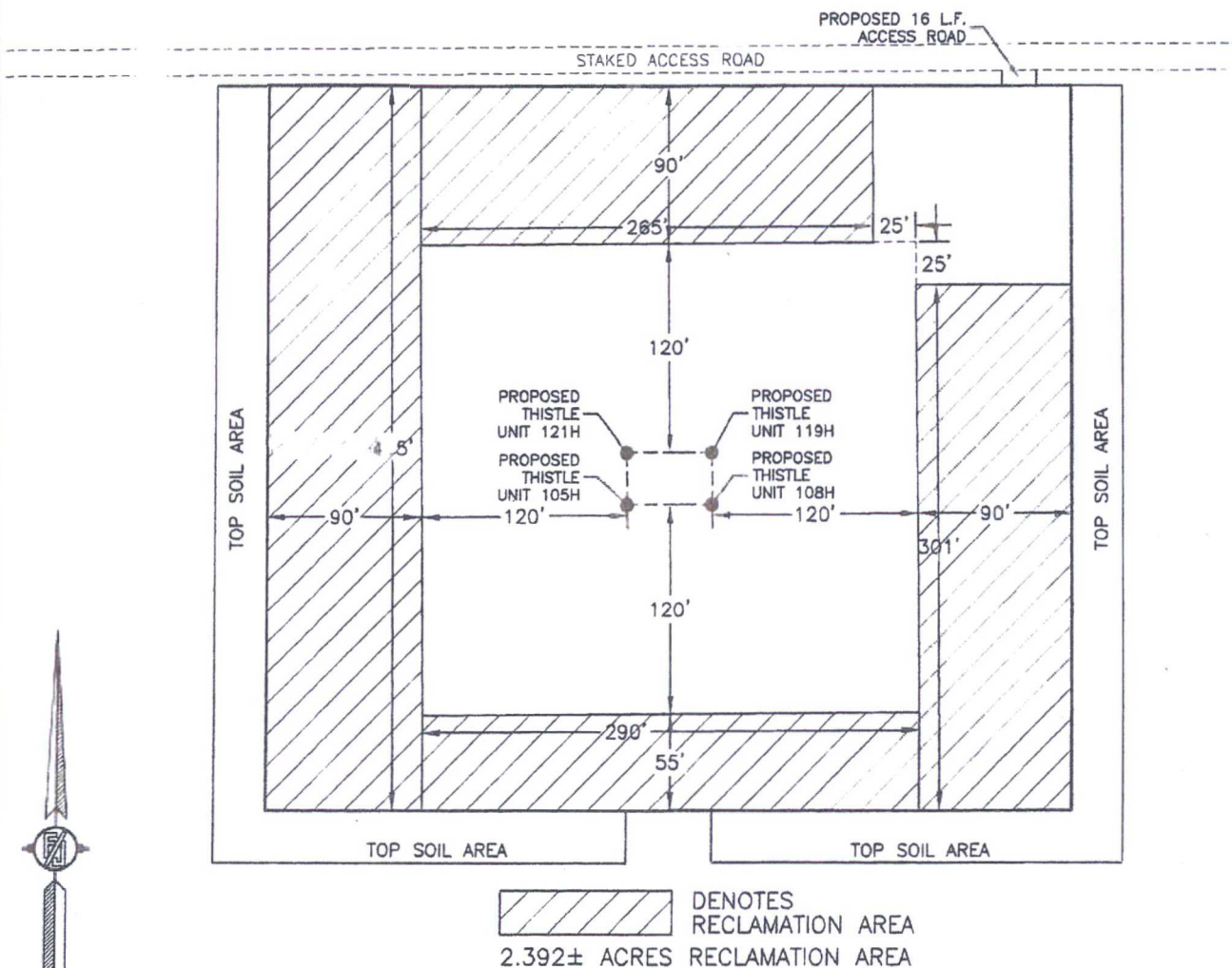
DEVON ENERGY PRODUCTION COMPANY, L.P.
THISTLE UNIT 105H
LOCATED 315 FT. FROM THE NORTH LINE
AND 850 FT. FROM THE EAST LINE OF
SECTION 21, TOWNSHIP 23 SOUTH,
RANGE 33 EAST, N.M.P.M.
LEA COUNTY, STATE OF NEW MEXICO

JUNE 21, 2016

SURVEY NO. 4723

MADRON SURVEYING, INC. 301 SOUTH CANAL (575) 234-3341 CARLSBAD, NEW MEXICO

**PROPOSED INTERIM SITE RECLAMATION
FOR THISTLE UNIT 105H**
SECTION 21, TOWNSHIP 23 SOUTH, RANGE 33 EAST, N.M.P.M.
LEA COUNTY, STATE OF NEW MEXICO



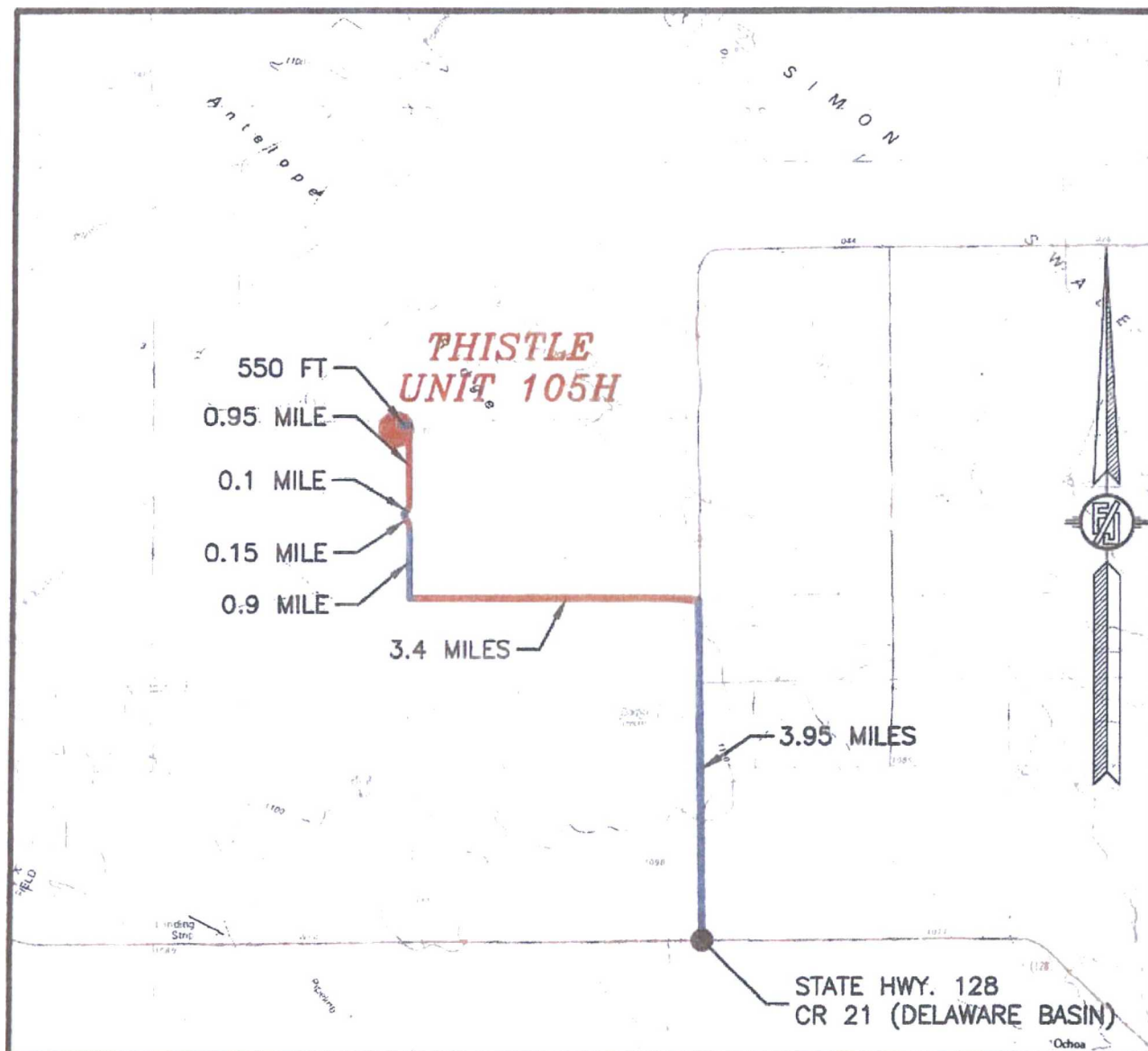
0 10 50 100 200
SCALE 1" = 100'

DEVON ENERGY PRODUCTION COMPANY, L.P.
THISTLE UNIT 105H
LOCATED 315 FT. FROM THE NORTH LINE
AND 850 FT. FROM THE EAST LINE OF
SECTION 21, TOWNSHIP 23 SOUTH,
RANGE 33 EAST, N.M.P.M.
LEA COUNTY, STATE OF NEW MEXICO

JUNE 21, 2016

MADRON SURVEYING, INC. 301 SOUTH CANAL (575) 234-3341 CARLSBAD, NEW MEXICO SURVEY NO. 4723

SECTION 21, TOWNSHIP 23 SOUTH, RANGE 33 EAST, N.M.P.M.
LEA COUNTY, STATE OF NEW MEXICO
VICINITY MAP



DISTANCES IN MILES

NOT TO SCALE

DIRECTIONS TO LOCATION

FROM STATE HWY 128 & CR 21 (DELAWARE BASIN) GO NORTH ON CR 21 FOR APPROX. 3.95 MILES, TURN LEFT ON XL ROAD AND GO WEST APPROX. 3.4 MILES, TURN RIGHT ON CALICHE LEASE ROAD AND GO NORTH APPROX. 0.9 OF A MILE, BEND LEFT AND GO NORTHWEST APPROX. 0.15 OF A MILE, BEND RIGHT AND GO NORTHEAST APPROX. 0.1 OF A MILE, BEND LEFT AND GO NORTH APPROX. 0.95 OF A MILE TO ROAD SURVEY, FOLLOW ROAD SURVEY WEST APPROX. 550' TO NORTHEAST CORNER OF PAD.

DEVON ENERGY PRODUCTION COMPANY, L.P.

THISTLE UNIT 105H

LOCATED 315 FT. FROM THE NORTH LINE
AND 850 FT. FROM THE EAST LINE OF
SECTION 21, TOWNSHIP 23 SOUTH,
RANGE 33 EAST, N.M.P.M.
LEA COUNTY, STATE OF NEW MEXICO

JUNE 21, 2016

MADRON SURVEYING, INC. 301 SOUTH CANAL (575) 234-3341 CARLSBAD, NEW MEXICO

SURVEY NO. 4723

[illegible]

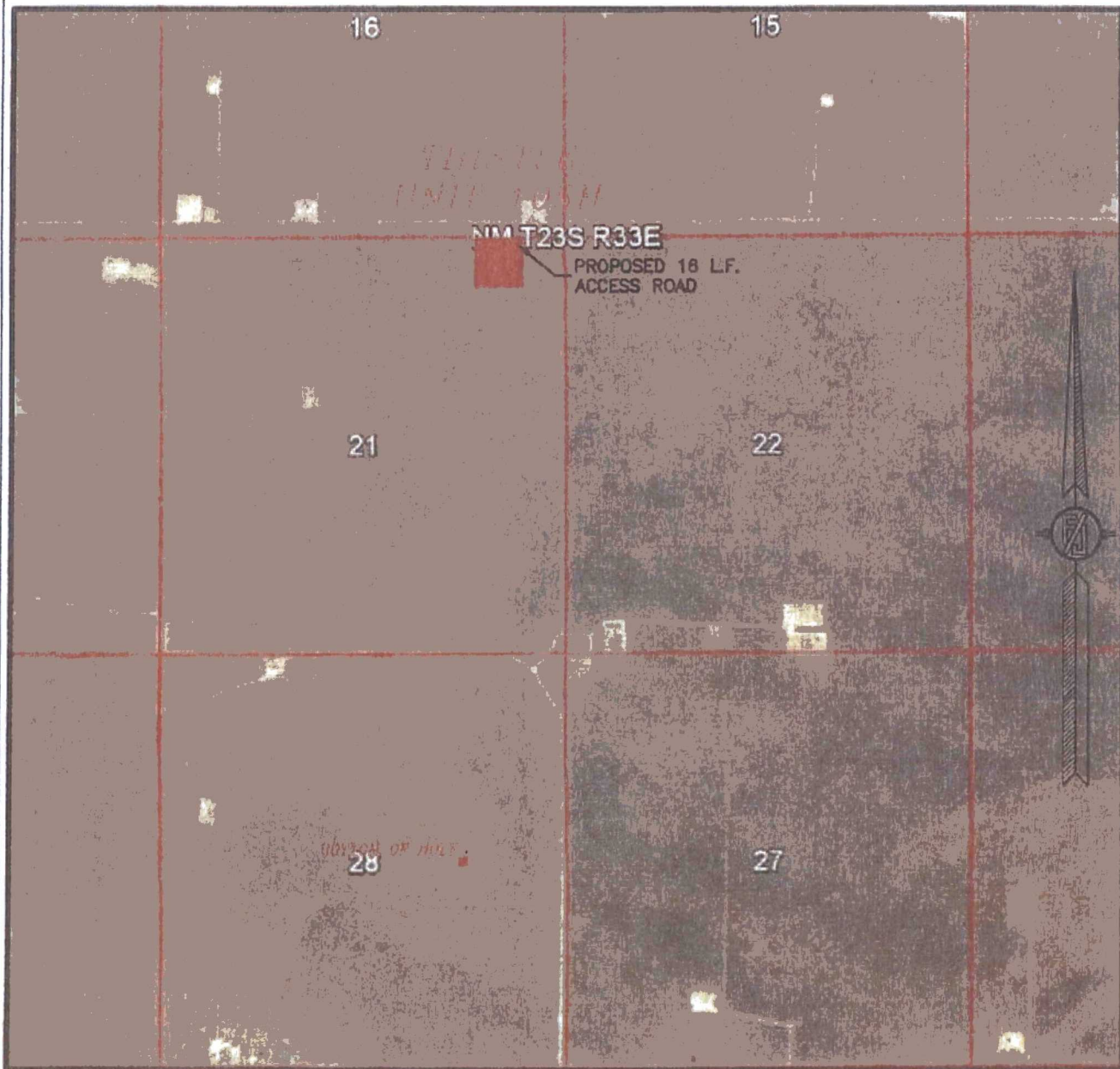
NOT TO SCALE

LOCATED 315 FT. FROM THE NORTH LINE
AND 850 FT. FROM THE EAST LINE OF
SECTION 21, TOWNSHIP 23 SOUTH,
RANGE 33 EAST, N.M.P.M.
LEA COUNTY, STATE OF NEW MEXICO

SURVEY NO. 4723

MADRON SURVEYING, INC. 301 SOUTH CANAL (575) 234-3341 CARLSBAD, NEW MEXICO

SECTION 21, TOWNSHIP 23 SOUTH, RANGE 33 EAST, N.M.P.M.
LEA COUNTY, STATE OF NEW MEXICO
AERIAL PHOTO



NOT TO SCALE
AERIAL PHOTO:
GOOGLE EARTH
FEB. 2014

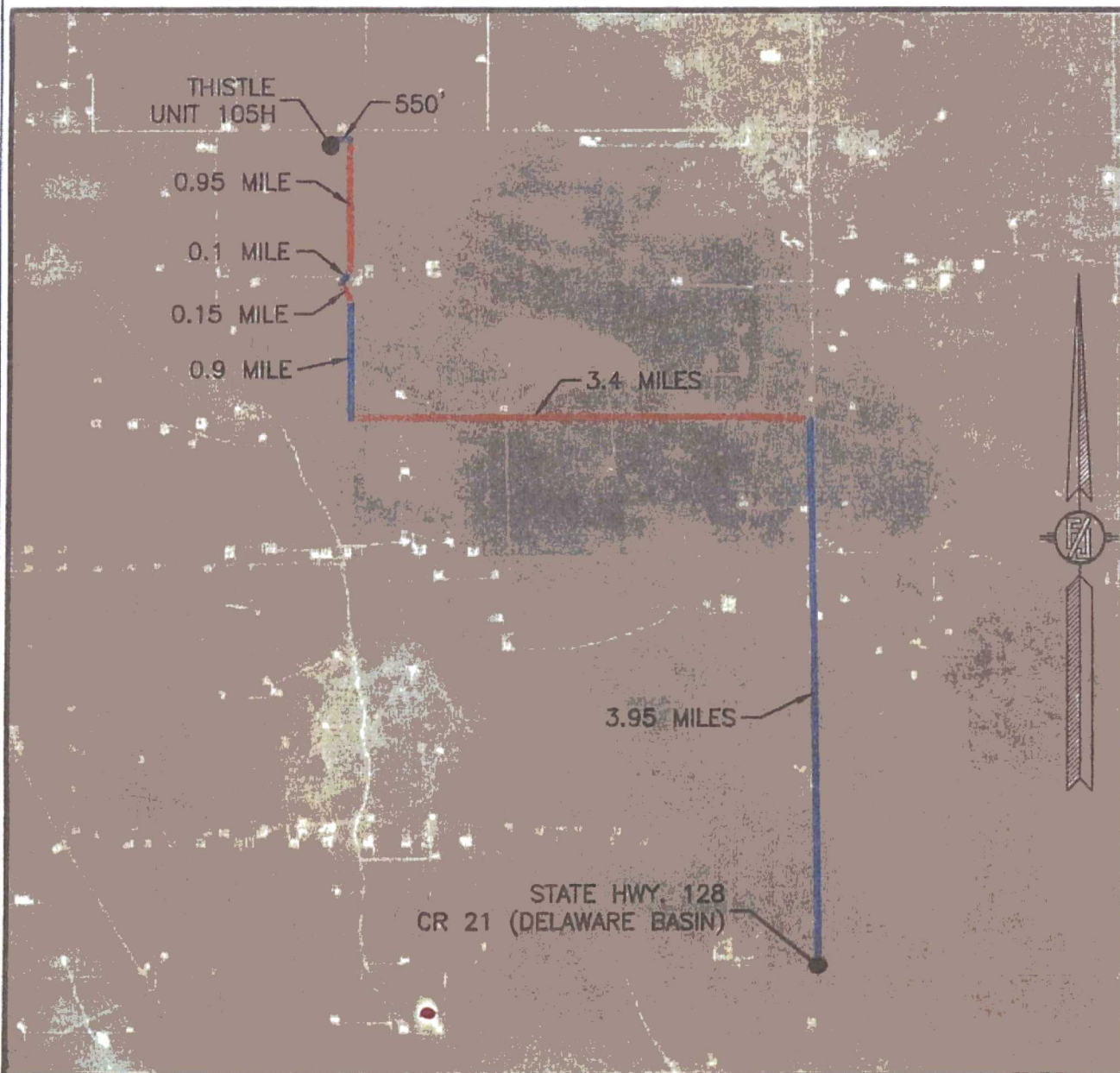
DEVON ENERGY PRODUCTION COMPANY, L.P.
THISTLE UNIT 105H
LOCATED 315 FT. FROM THE NORTH LINE
AND 850 FT. FROM THE EAST LINE OF
SECTION 21, TOWNSHIP 23 SOUTH,
RANGE 33 EAST, N.M.P.M.
LEA COUNTY, STATE OF NEW MEXICO

JUNE 21, 2016

SURVEY NO. 4723

MADRON SURVEYING, INC. 301 SOUTH CANAL (575) 234-3341 CARLSBAD, NEW MEXICO

SECTION 21, TOWNSHIP 23 SOUTH, RANGE 33 EAST, N.M.P.M.
LEA COUNTY, STATE OF NEW MEXICO
AERIAL ACCESS ROUTE MAP



NOT TO SCALE
AERIAL PHOTO:
GOOGLE EARTH
FEB. 2014

DEVON ENERGY PRODUCTION COMPANY, L.P.
THISTLE UNIT 105H

LOCATED 315 FT. FROM THE NORTH LINE
AND 850 FT. FROM THE EAST LINE OF
SECTION 21, TOWNSHIP 23 SOUTH,
RANGE 33 EAST, N.M.P.M.
LEA COUNTY, STATE OF NEW MEXICO

JUNE 21, 2016

SURVEY NO. 4723

MADRON SURVEYING, INC. 301 SOUTH CANAL (575) 234-3341 CARLSBAD, NEW MEXICO