

District I
1625 N. French Dr., Hobbs, NM 88240
Phone: (575) 393-6161 Fax: (575) 393-0720
District II
811 S. First St., Artesia, NM 88210
Phone: (575) 748-1283 Fax: (575) 748-9720
District III
1000 Rio Brazos Road, Aztec, NM 87410
Phone: (505) 334-6178 Fax: (505) 334-6170
District IV
1220 S. St. Francis Dr., Santa Fe, NM 87505
Phone: (505) 476-3460 Fax: (505) 476-3462

State of New Mexico
Energy, Minerals & Natural Resources Department
OIL CONSERVATION DIVISION
1220 South St. Francis Dr.
Santa Fe, NM 87505

Form C-102
Revised August 1, 2011
Submit one copy to appropriate
District Office

☐ AMENDED REPORT

WELL LOCATION AND ACREAGE DEDICATION PLAT

¹ API Number 30-025- 43734	² Pool Code 62180	³ Pool Name EAST VACUUM GBSA UNIT
⁴ Property Code 31172	⁵ Property Name EAST VACUUM GBSA UNIT	⁶ Well Number 514
⁷ OGRID No. 217817	⁸ Operator Name ConocoPhillips Company	⁹ Elevation 3952'

¹⁰ Surface Location

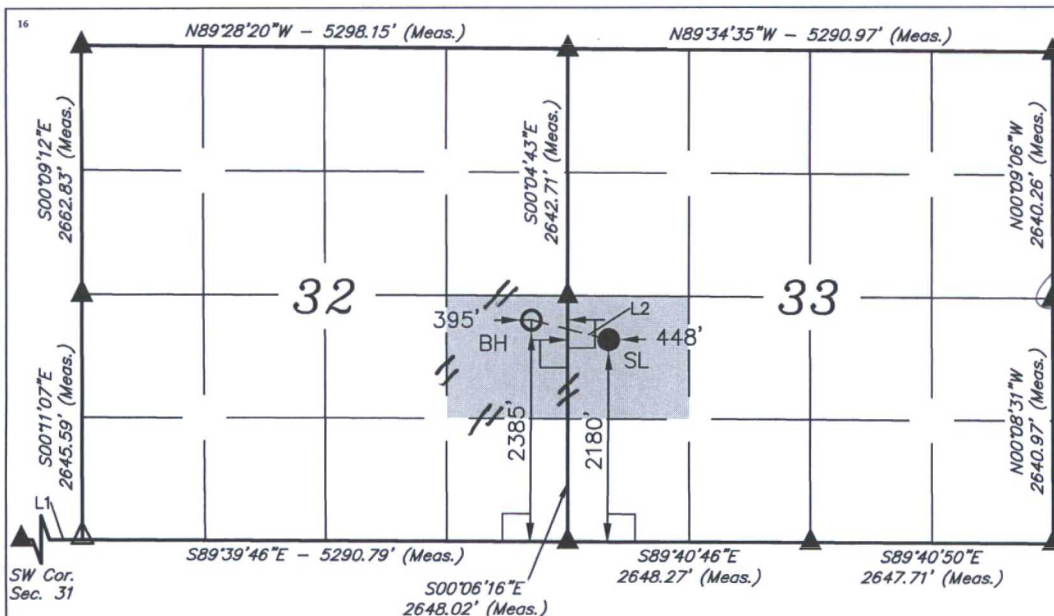
UL or lot no.	Section	Township	Range	Lot Idn	Feet from the	North/South line	Feet from the	East/West line	County
L	33	17S	35E		2180	SOUTH	488	WEST	LEA

¹¹ Bottom Hole Location If Different From Surface

UL or lot no.	Section	Township	Range	Lot Idn	Feet from the	North/South line	Feet from the	East/West line	County
I	32	17S	35E		2385	SOUTH	395	EAST	LEA

¹² Dedicated Acres 80	¹³ Joint or Infill 40	¹⁴ Consolidation Code	¹⁵ Order No.
-------------------------------------	-------------------------------------	----------------------------------	-------------------------

No allowable will be assigned to this completion until all interests have been consolidated or a non-standard unit has been approved by the division.



NAD 83 (SURFACE LOCATION)	
LATITUDE =	32°47'24.34" (32.790094)
LONGITUDE =	103°28'11.24" (103.469789)
NAD 27 (SURFACE LOCATION)	
LATITUDE =	32°47'23.89" (32.789969)
LONGITUDE =	103°28'09.46" (103.469294)
STATE PLANE NAD 83	
N: 652251.47 E: 806709.20	
STATE PLANE NAD 27	
N: 652186.70 E: 765530.18	

NAD 83 (BOTTOM LOCATION)	
LATITUDE =	32°47'26.41" (32.790669)
LONGITUDE =	103°28'21.12" (103.472533)
NAD 27 (BOTTOM LOCATION)	
LATITUDE =	32°47'25.97" (32.790547)
LONGITUDE =	103°28'19.34" (103.472039)
STATE PLANE NAD 83	
N: 652454.24 E: 805864.11	
STATE PLANE NAD 27	
N: 652389.44 E: 764685.10	

LINE TABLE		
LINE	DIRECTION	LENGTH
L1	N89°39'46"W	5204.80'
L2	N76°00'56"W	869.26'



SCALE
DRAWN BY: 04-10-14 E.C.

- ▲ = SECTION CORNERS LOCATED.
△ = SECTION CORNERS RE-ESTABLISHED.
(Not Set on Ground.)

**¹⁷ OPERATOR
CERTIFICATION**

I hereby certify that the information contained herein is true and complete to the best of my knowledge and belief, and that this organization either owns a working interest or unleased mineral interest in the land including the proposed bottom hole location or has a right to drill this well at this location pursuant to a contract with an owner of such a mineral or working interest, or to a voluntary pooling agreement or a compulsory pooling order heretofore entered by the division.

Kristina Mickens 3-29-17
Signature Date

KRISTINA MICKENS

Printed Name

kristina.mickens@cop.com

E-mail Address

**¹⁸ SURVEYOR
CERTIFICATION**

I hereby certify that the well location shown on this plat was plotted from field notes of actual surveys made by me or under my supervision, and that the same is true and correct to the best of my belief.

April 02, 2014

Date of Survey

Signature and Seal of Professional Surveyor:



Certificate Number: