

District I
1625 N. French Dr., Hobbs, NM 88240
Phone: (575) 393-6161 Fax: (575) 393-0720
District II
811 S. First St., Artesia, NM 88210
Phone: (575) 748-1283 Fax: (575) 748-9720
District III
1000 Rio Brazos Road, Aztec, NM 87410
Phone: (505) 334-6178 Fax: (505) 334-6170
District IV
1220 S. St. Francis Dr., Santa Fe, NM 87505
Phone: (505) 476-3460 Fax: (505) 476-3462

State of New Mexico
Energy, Minerals & Natural Resources Department
OIL CONSERVATION DIVISION
1220 South St. Francis Dr.
Santa Fe, NM 87505

Form C-102
Revised August 1, 2011
Submit one copy to appropriate
District Office

☒ AMENDED REPORT

WELL LOCATION AND ACREAGE DEDICATION PLAT

¹ API Number 30-025-43237	² Pool Code 96434	³ Pool Name Red Hills; Bone Spring, North
⁴ Property Code 315754	⁵ Property Name BLUE KRAIT 23 FED	⁶ Well Number 3H
⁷ OGRID No. 6137	⁸ Operator Name DEVON ENERGY PRODUCTION COMPANY, L.P.	⁹ Elevation 3562.2

¹⁰ Surface Location

UL or lot no.	Section	Township	Range	Lot Idn	Feet from the	North/South line	Feet from the	East/West line	County
P	23	24 S	33 E		200	SOUTH	690	EAST	LEA

¹¹ Bottom Hole Location If Different From Surface

UL or lot no.	Section	Township	Range	Lot Idn	Feet from the	North/South line	Feet from the	East/West line	County
A	23	24 S	33 E		330	NORTH	1284	EAST	LEA

¹² Dedicated Acres 160	¹³ Joint or Infill	¹⁴ Consolidation Code	¹⁵ Order No.
--------------------------------------	-------------------------------	----------------------------------	-------------------------

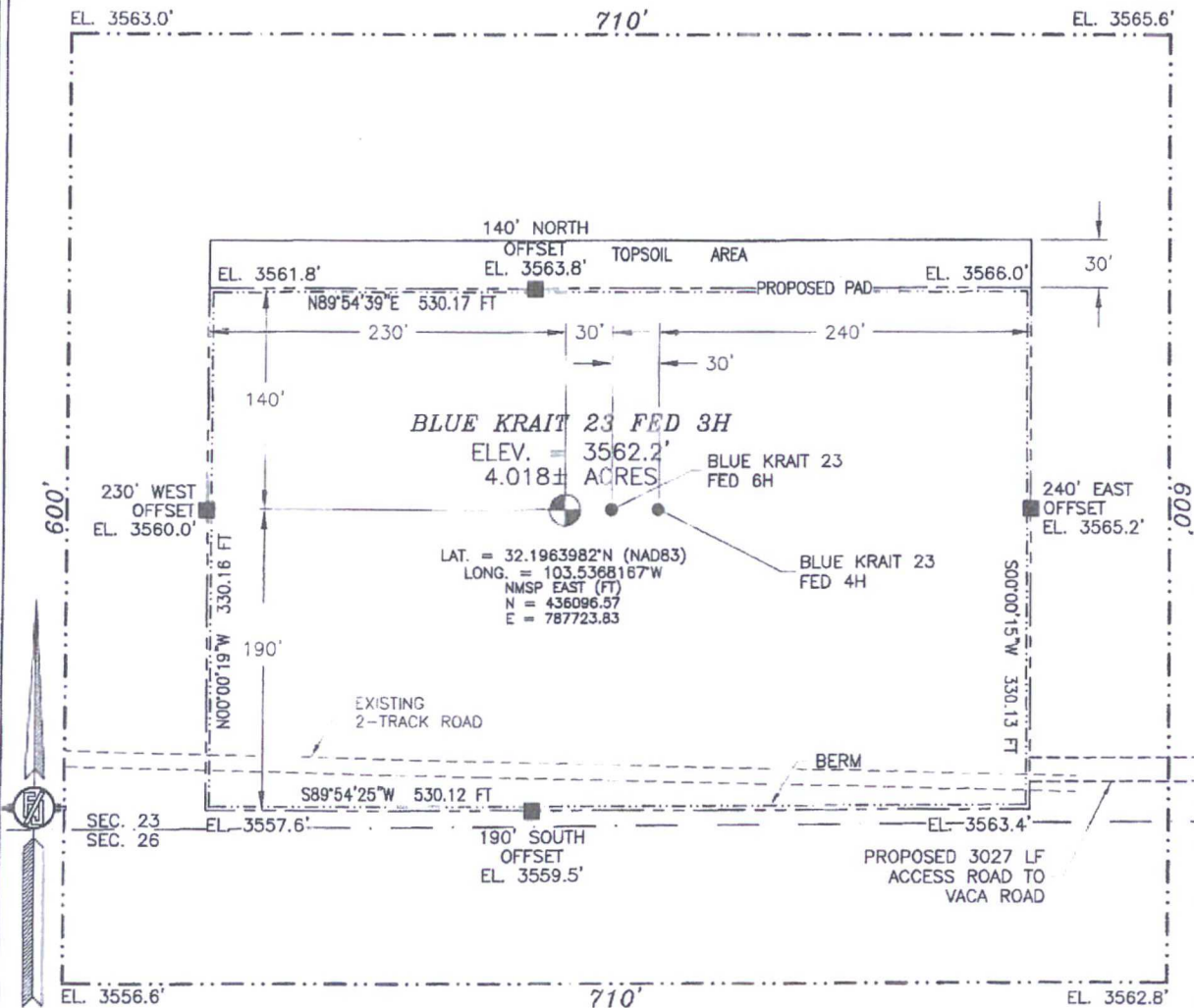
No allowable will be assigned to this completion until all interests have been consolidated or a non-standard unit has been approved by the division.

<p>N89°33'14"E 2638.47 FT</p> <p>NW CORNER SEC. 23 LAT. = 32.2103545°N LONG. = 103.5516507°W NMSP EAST (FT) N = 441140.13 E = 783098.19</p> <p>W Q CORNER SEC. 23 LAT. = 32.2031048°N LONG. = 103.5516485°W NMSP EAST (FT) N = 438502.76 E = 783118.06</p> <p>SW CORNER SEC. 23 LAT. = 32.1958504°N LONG. = 103.5516422°W NMSP EAST (FT) N = 435863.65 E = 783139.20</p>		<p>N89°33'14"E 2638.47 FT</p> <p>DNF NE CORNER SEC. 23 LAT. = 32.2103608°N LONG. = 103.5345930°W NMSP EAST (FT) N = 441181.22 E = 788373.97</p> <p>NOTE: LATITUDE AND LONGITUDE COORDINATES ARE SHOWN USING THE NORTH AMERICAN DATUM OF 1983 (NAD83). LISTED NEW MEXICO STATE PLANE EAST COORDINATES ARE GRID (NAD83). BASIS OF BEARING AND DISTANCES USED ARE NEW MEXICO STATE PLANE EAST COORDINATES MODIFIED TO THE SURFACE.</p> <p>BLUE KRAIT 23 FED 3H ELEV. = 3562.2' LAT. = 32.196398°N (NAD83) LONG. = 103.5366167°W NMSP EAST (FT) N = 436096.57 E = 787723.83</p> <p>S Q CORNER SEC. 23 LAT. = 32.1958491°N LONG. = 103.5431170°W NMSP EAST (FT) N = 435862.45 E = 785776.38</p> <p>SE CORNER SEC. 23 LAT. = 32.1958483°N LONG. = 103.545863°W NMSP EAST (FT) N = 435901.64 E = 788415.27</p>		<p>¹⁷ OPERATOR CERTIFICATION</p> <p>I hereby certify that the information contained herein is true and complete to the best of my knowledge and belief, and that this organization either owns a working interest or unleased mineral interest in the land including the proposed bottom hole location or has a right to drill this well at this location pursuant to a contract with an owner of such a mineral or working interest, or to a voluntary pooling agreement or a compulsory pooling order heretofore entered by the division.</p> <p><i>Linda Good</i> 4/26/2017 Signature Date</p> <p>Linda Good Printed Name</p> <p>linda.good@dvn.com E-mail Address</p> <p>¹⁸ SURVEYOR CERTIFICATION</p> <p>I hereby certify that the well location shown on this plat was plotted from field notes of actual surveys made by me or under my supervision, and that the same is true and correct to the best of my belief.</p> <p>APRIL 12, 2017 Date of Survey</p> <p><i>[Signature]</i> Signature and Seal of Registered Surveyor</p> <p>Certificate Number: 0110001000000000, PLS 12797 SURVEY NO. 3672F</p>	
--	--	---	--	--	--

SECTION 23, TOWNSHIP 24 SOUTH, RANGE 33 EAST, N.M.P.M.
LEA COUNTY, STATE OF NEW MEXICO

SITE MAP

NOTE: LATITUDE AND LONGITUDE COORDINATES ARE SHOWN USING THE NORTH AMERICAN DATUM OF 1983 (NAD83). LISTED NEW MEXICO STATE PLANE EAST COORDINATES ARE GRID (NAD83). BASIS OF BEARING AND DISTANCES USED ARE NEW MEXICO STATE PLANE EAST COORDINATES MODIFIED TO THE SURFACE



010 50 100 200

SCALE 1" = 100'

DIRECTIONS TO LOCATION

FROM THE INTERSECTION OF STATE HIGHWAY 128 AND VACA ROAD GO SOUTHEAST ON VACA ROAD FOR APPROX. 1.1 MILES. GO WEST ON 2-TRACK ROAD FOR APPROX. 0.6 OF A MILE TO SOUTHEAST PAD CORNER.

DEVON ENERGY PRODUCTION COMPANY, L.P.

BLUE KRAIT 23 FED 3H

LOCATED 200 FT. FROM THE SOUTH LINE

AND 690 FT. FROM THE EAST LINE OF

SECTION 23, TOWNSHIP 24 SOUTH,

RANGE 33 EAST, N.M.P.M.

LEA COUNTY, STATE OF NEW MEXICO

APRIL 12, 2017

SURVEY NO. 3672F

MADRON SURVEYING, INC. 301 SOUTH CANAL (575) 234-3341

CARLSBAD, NEW MEXICO