

N89°33'14"E 2638.47 FT

N89°33'14"E 2638.47 FT

NW CORNER SEC. 23
LAT. = 32.2103545°N
LONG. = 103.5516507°W
NMSP EAST (FT)
N = 441140.13
E = 783098.19

DNF
NE CORNER SEC. 23
LAT. = 32.2103603°N
LONG. = 103.5345937°W
NMSP EAST (FT)
N = 441181.22
E = 788373.97

380'

BOTTOM
OF HOLE

BOTTOM OF HOLE
LAT. = 32.2094535°N
LONG. = 103.5358207°W
NMSP EAST (FT)
N = 440848.33
E = 787996.72

W Q CORNER SEC. 23
LAT. = 32.2031048°N
LONG. = 103.5516485°W

NMSP EAST (FT)
N = 438502.76
E = 783118.06

E Q CORNER SEC. 23
LAT. = 32.2031101°N
LONG. = 103.5345876°W

NMSP EAST (FT)
N = 438543.46
E = 788395.26

BLUE KRAIT 23 FED 4H

ELEV. = 3562.4
LAT = 32.1963981°N (NAD83)
LONG. = 103.5366228°W
NMSP EAST (FT)
N = 436097.0
E = 787783.8

SURFACE
LOCATION

SW CORNER SEC. 23
LAT. = 32.1958504°N
LONG. = 103.5516422°W
NMSP EAST (FT)
N = 435863.65
E = 783139.20

S Q CORNER SEC. 23
LAT. = 32.1958491°N
LONG. = 103.5431170°W
NMSP EAST (FT)
N = 435882.45
E = 785776.38

SE CORNER SEC. 23
LAT. = 32.1958483°N
LONG. = 103.5345863°W
NMSP EAST (FT)
N = 435901.64
E = 788415.27

200'

630'

S89°35'30"W 2637.75 FT

S89°35'00"W 2639.46 FT

OPERATOR CERTIFICATION

I hereby certify that the information contained herein is true and complete to the best of my knowledge and belief, and that this organization either owns a working interest or unleased mineral interest in the land including the proposed bottom hole location or has a right to drill this well at this location pursuant to a contract with an owner of such a mineral or working interest, or to a voluntary pooling agreement or a compulsory pooling order heretofore entered by the district.

Linda Good 4/26/2017
Signature Date

Linda Good

Printed Name

linda.good@dv.n.com

E-mail Address

"SURVEYOR CERTIFICATION

I hereby certify that the well location shown on this plat was plotted from field notes of actual surveys made by me or under my supervision, and that the same is true and correct to the best of my belief.

APRIL 12, 2017

Date of Survey

William F. Jaramillo

Signature and Seal of Professional Surveyor

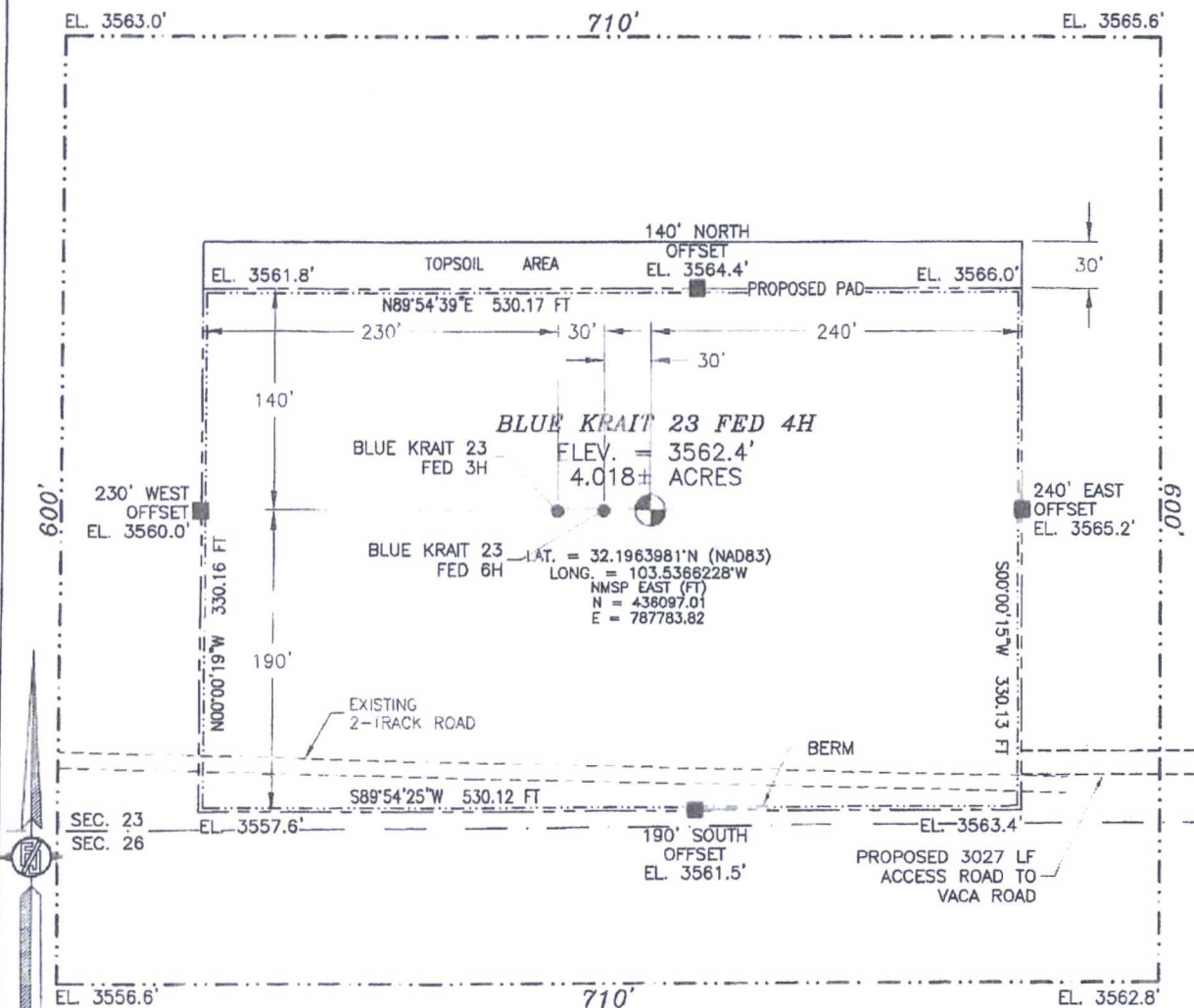
Certificate Number: WILLIAM F. JARAMILLO, PLS 17792

SURVEY NO. 06793

SECTION 23, TOWNSHIP 24 SOUTH, RANGE 33 EAST, N.M.P.M.
LEA COUNTY, STATE OF NEW MEXICO

SITE MAP

NOTE: LATITUDE AND LONGITUDE COORDINATES ARE SHOWN USING THE NORTH AMERICAN DATUM OF 1983 (NAD83). LISTED NEW MEXICO STATE PLANE EAST COORDINATES ARE GRID (NAD83). BASIS OF BEARING AND DISTANCES USED ARE NEW MEXICO STATE PLANE EAST COORDINATES MODIFIED TO THE SURFACE.



010 50 100 200

SCALE 1" = 100'

DIRECTIONS TO LOCATION

FROM THE INTERSECTION OF STATE HIGHWAY 128 AND VACA ROAD GO SOUTHEAST ON VACA ROAD FOR APPROX. 1.1 MILES. GO WEST ON 2-TRACK ROAD FOR APPROX. 0.6 OF A MILE TO SOUTHEAST PAD CORNER.

DEVON ENERGY PRODUCTION COMPANY, L.P.
BLUE KRAIT 23 FED 4H

LOCATED 200 FT. FROM THE SOUTH LINE
AND 630 FT. FROM THE EAST LINE OF
SECTION 23, TOWNSHIP 24 SOUTH,
RANGE 33 EAST, N.M.P.M.
LEA COUNTY, STATE OF NEW MEXICO

APRIL 12, 2017

SURVEY NO. 3673C

MADRON SURVEYING, INC. 301 SOUTH CANAL (575) 234-3341 CARLSBAD, NEW MEXICO