

District I  
1625 N. French Dr., Hobbs, NM 88240  
Phone: (575) 393-6161 Fax: (575) 393-0720  
District II  
811 S. First St., Artesia, NM 88210  
Phone: (575) 748-1283 Fax: (575) 748-9720  
District III  
1000 Rio Brazos Road, Aztec, NM 87410  
Phone: (505) 334-6178 Fax: (505) 334-6170  
District IV  
1220 S. St. Francis Dr., Santa Fe, NM 87505  
Phone: (505) 476-3460 Fax: (505) 476-3462

State of New Mexico  
Energy, Minerals & Natural Resources Department  
OIL CONSERVATION DIVISION  
1220 South St. Francis Dr.  
Santa Fe, NM 87505

Form C-102  
Revised August 1, 2011  
Submit one copy to appropriate  
District Office

☐ AMENDED REPORT

WELL LOCATION AND ACREAGE DEDICATION PLAT

<sup>1</sup> API Number <b>30-025-42685</b>	<sup>2</sup> Pool Code <b>97597</b>	<sup>3</sup> Pool Name <b>Jabalina; Delaware, Southwest</b>
<sup>4</sup> Property Code <b>315022</b>	<sup>5</sup> Property Name <b>BILLIKEN 6 FEDERAL</b>	
<sup>6</sup> Well Number <b>1H</b>	<sup>7</sup> Elevation <b>3269.2</b>	
<sup>8</sup> OGRID No. <b>6137</b>	<sup>9</sup> Operator Name <b>DEVON ENERGY PRODUCTION COMPANY, L.P.</b>	

" Surface Location

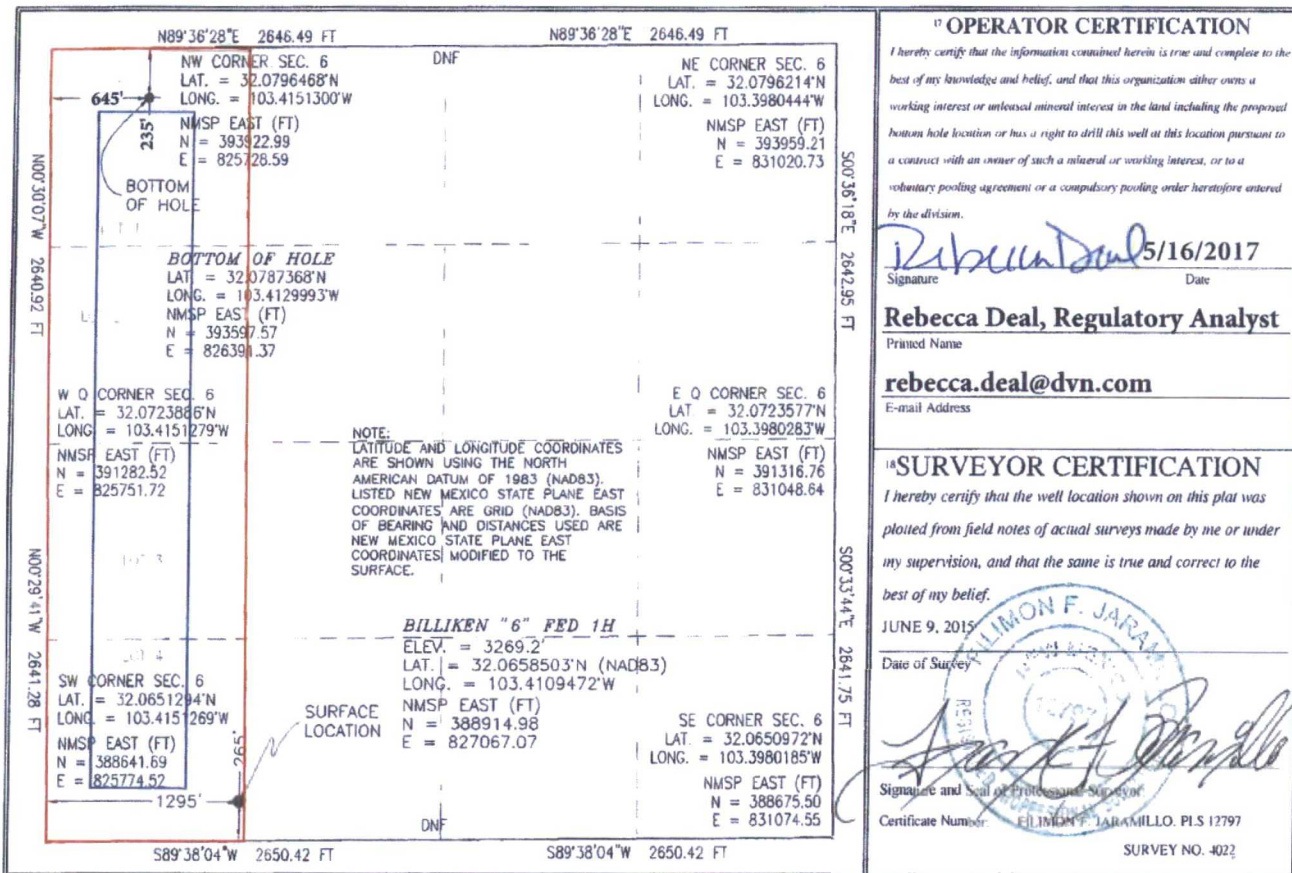
UL or lot no.	Section	Township	Range	Lot Idn	Feet from the	North/South line	Feet from the	East/West line	County
4	6	26 S	35 E		265	SOUTH	1295	WEST	LEA

" Bottom Hole Location If Different From Surface

UL or lot no.	Section	Township	Range	Lot Idn	Feet from the	North/South line	Feet from the	East/West line	County
1	6	26 S	35 E		235	NORTH	645	WEST	LEA

<sup>12</sup> Dedicated Acres <b>160</b>	<sup>13</sup> Joint or Infill	<sup>14</sup> Consolidation Code	<sup>15</sup> Order No.
---	-------------------------------	----------------------------------	-------------------------

No allowable will be assigned to this completion until all interests have been consolidated or a non-standard unit has been approved by the division.



PP: 275' FSL & 1085' FWL, Sec 6, T26S, R35E

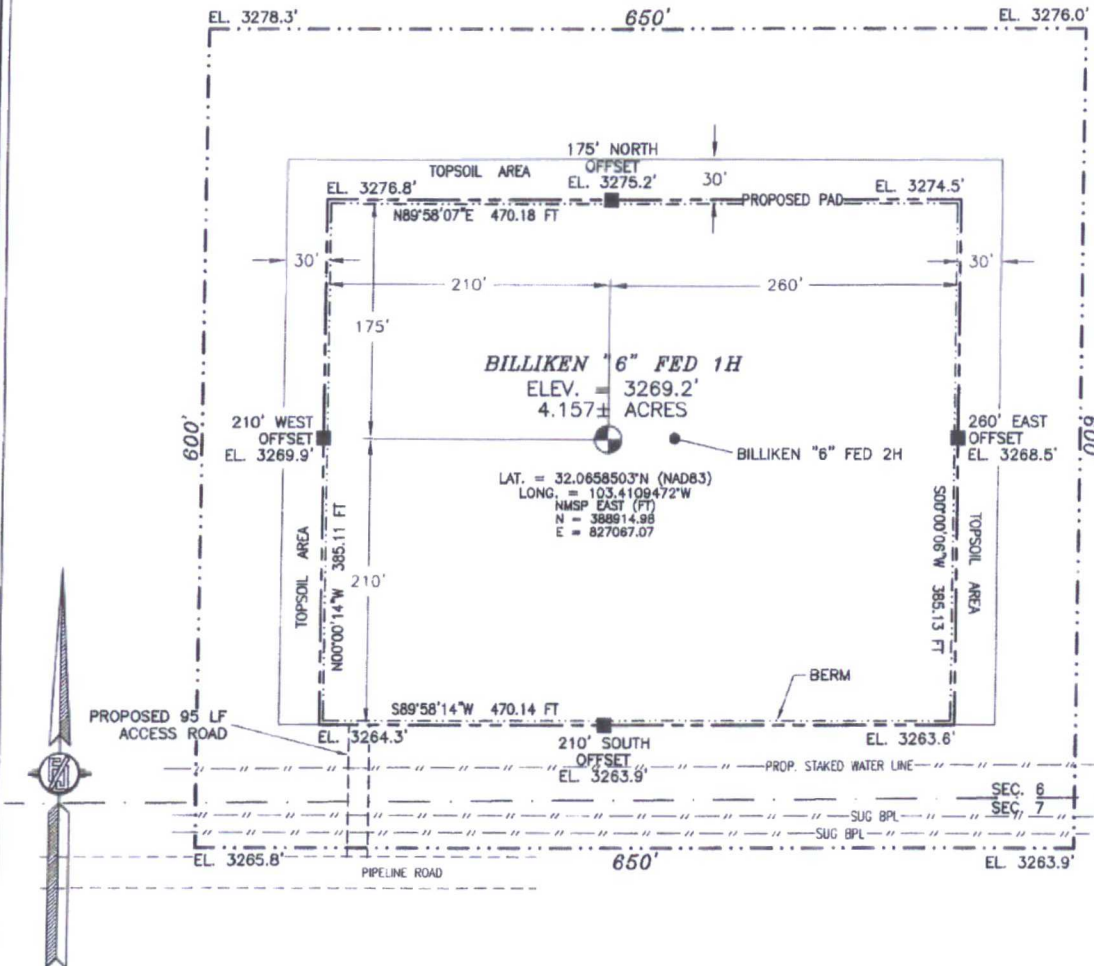
Project Area:                     

Producing Area:

SECTION 6, TOWNSHIP 26 SOUTH, RANGE 35 EAST, N.M.P.M.  
LEA COUNTY, STATE OF NEW MEXICO

SITE MAP

NOTE: LATITUDE AND LONGITUDE COORDINATES ARE SHOWN USING THE NORTH AMERICAN DATUM OF 1983 (NAD83). LISTED NEW MEXICO STATE PLANE EAST COORDINATES ARE GRID (NAD83). BASIS OF BEARING AND DISTANCES USED ARE NEW MEXICO STATE PLANE EAST COORDINATES MODIFIED TO THE SURFACE



0 12 60 120 240

SCALE 1" = 120'

DIRECTIONS TO LOCATION

FROM THE INTERSECTION OF STATE HIGHWAY 128 AND CR 2 (BATTLE AXE ROAD) GO SOUTH & WEST ON CR 2 APPROX. 12.2 MILES TO A LEASE ROAD ON LEFT (SOUTH) TURN SOUTH ON LEASE ROAD GO APPROX. 0.6 OF A MILE, ROAD TURNS LEFT (EAST) ON PIPELINE ROAD, GO EAST ON PIPELINE ROAD APPROX. 7.25 MILES TO A ROAD LATH WITH RED & WHITE PAINT ON LEFT (NORTH) OF PIPELINE ROAD. GO NORTH APPROX. 95' TO THE SOUTHWEST CORNER FOR THIS LOCATION.

DEVON ENERGY PRODUCTION COMPANY, L.P.

**BILLIKEN "6" FED 1H**

LOCATED 265 FT. FROM THE SOUTH LINE  
AND 1295 FT. FROM THE WEST LINE OF

SECTION 6, TOWNSHIP 26 SOUTH,

RANGE 35 EAST, N.M.P.M.

LEA COUNTY, STATE OF NEW MEXICO

JUNE 9, 2015

SURVEY NO. 4022

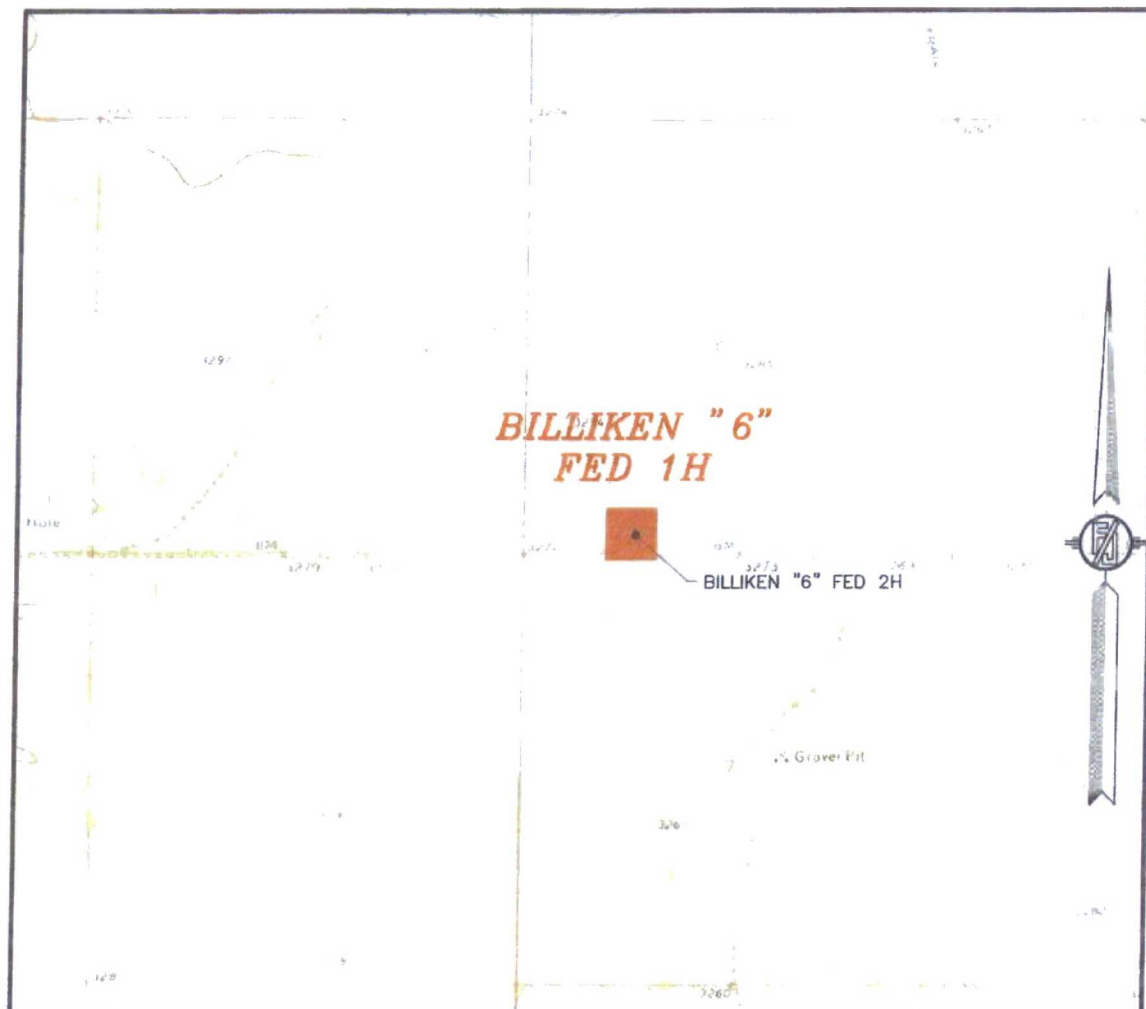
MADRON SURVEYING, INC.

301 SOUTH CANAL  
(575) 234-3341

CARLSBAD, NEW MEXICO



SECTION 6, TOWNSHIP 26 SOUTH, RANGE 35 EAST, N.M.P.M.  
LEA COUNTY, STATE OF NEW MEXICO  
LOCATION VERIFICATION MAP



USGS QUAD MAP:  
ANDREWS PLACE

NOT TO SCALE

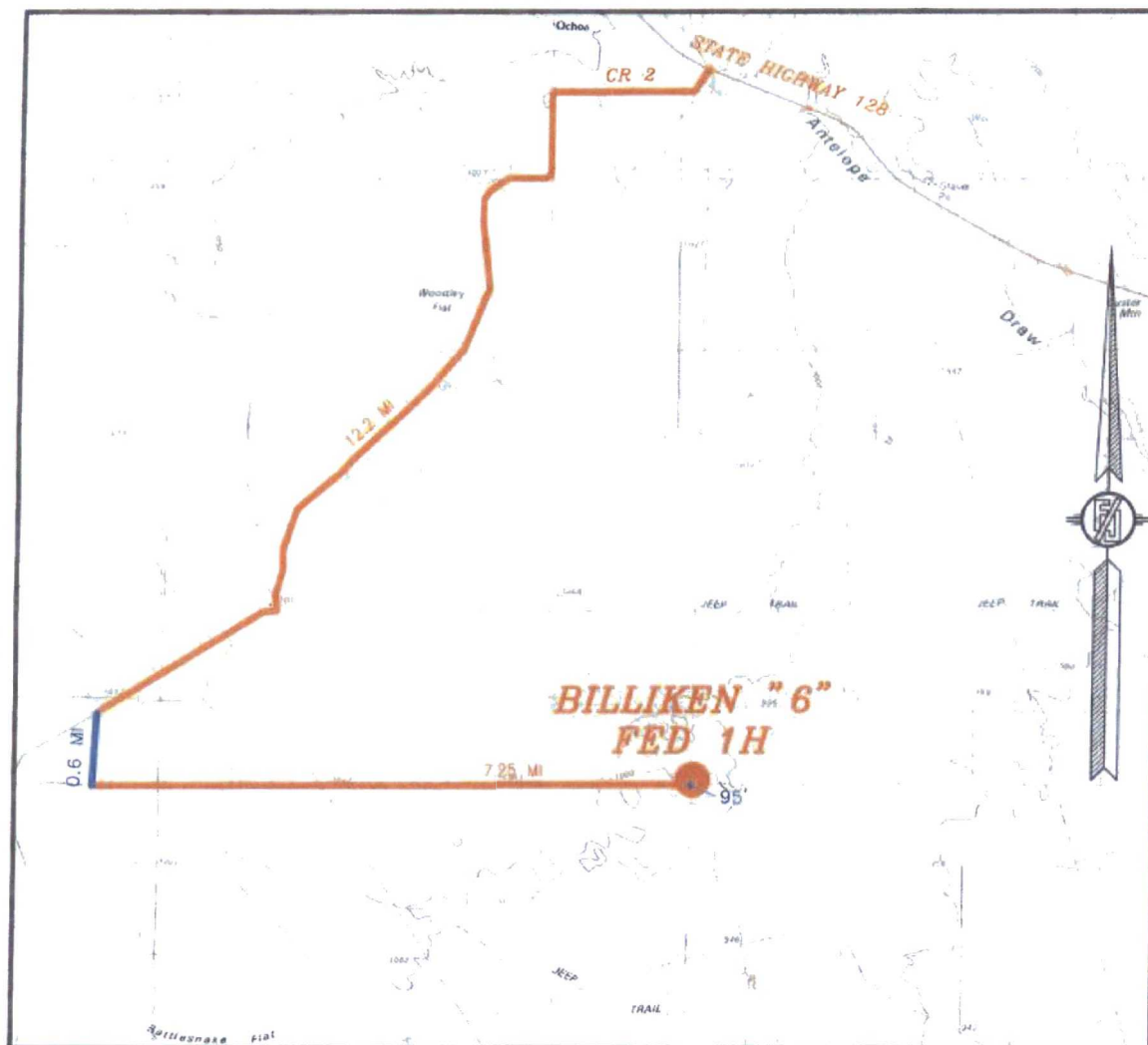
DEVON ENERGY PRODUCTION COMPANY, L.P.  
**BILLIKEN "6" FED 1H**  
LOCATED 265 FT. FROM THE SOUTH LINE  
AND 1295 FT. FROM THE WEST LINE OF  
SECTION 6, TOWNSHIP 26 SOUTH,  
RANGE 35 EAST, N.M.P.M.  
LEA COUNTY, STATE OF NEW MEXICO

JUNE 9, 2015

SURVEY NO. 4022

MADRON SURVEYING, INC. 301 SOUTH CANAL (575) 234-3341 CARLSBAD, NEW MEXICO

SECTION 6, TOWNSHIP 26 SOUTH, RANGE 35 EAST, N.M.P.M.  
LEA COUNTY, STATE OF NEW MEXICO  
VICINITY MAP



DISTANCES IN MILES

NOT TO SCALE

DEVON ENERGY PRODUCTION COMPANY, L.P.

**BILLIKEN "6" FED 1H**

LOCATED 265 FT. FROM THE SOUTH LINE  
AND 1295 FT. FROM THE WEST LINE OF

SECTION 6, TOWNSHIP 26 SOUTH,

RANGE 35 EAST, N.M.P.M.

LEA COUNTY, STATE OF NEW MEXICO

JUNE 9, 2015

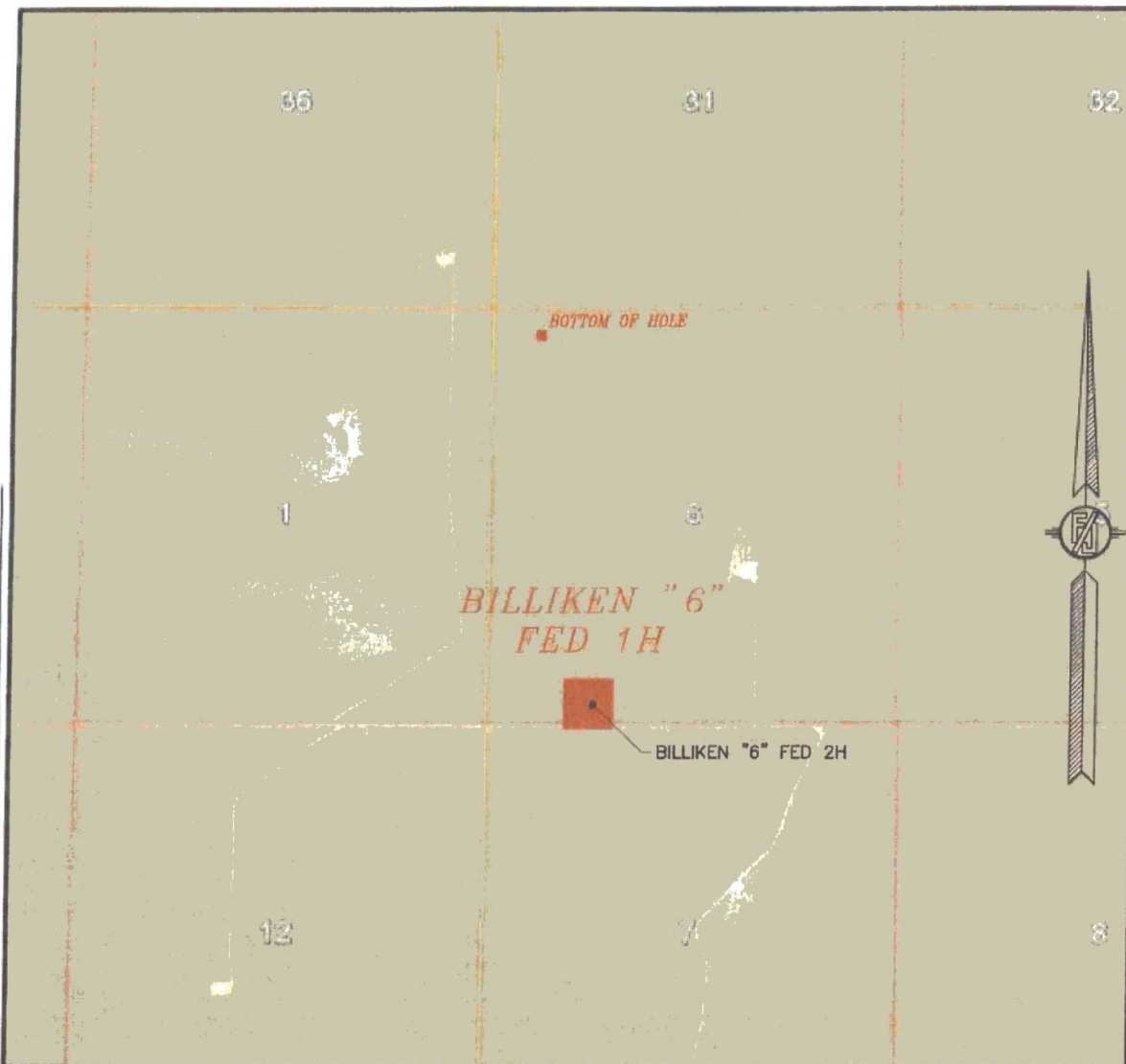
**DIRECTIONS TO LOCATION**

FROM THE INTERSECTION OF STATE HIGHWAY 128 AND CR 2 (BATTLE AXE ROAD) GO SOUTH & WEST ON CR 2 APPROX. 12.2 MILES TO A LEASE ROAD ON LEFT (SOUTH) TURN SOUTH ON LEASE ROAD GO APPROX. 0.6 OF A MILE, ROAD TURNS LEFT (EAST) ON PIPELINE ROAD. GO EAST ON PIPELINE ROAD APPROX. 7.25 MILES TO A ROAD LATH WITH RED & WHITE PAINT ON LEFT (NORTH) OF PIPELINE ROAD. GO NORTH APPROX. 95' TO THE SOUTHWEST CORNER FOR THIS LOCATION.

SURVEY NO. 4022

MADRON SURVEYING, INC. 301 SOUTH CANAL (575) 234-3341 CARLSBAD, NEW MEXICO

SECTION 6, TOWNSHIP 26 SOUTH, RANGE 35 EAST, N.M.P.M.  
LEA COUNTY, STATE OF NEW MEXICO  
AERIAL PHOTO



NOT TO SCALE  
AERIAL PHOTO:  
GOOGLE EARTH  
APRIL 2013

DEVON ENERGY PRODUCTION COMPANY, L.P.

**BILLIKEN "6" FED 1H**

LOCATED 265 FT. FROM THE SOUTH LINE  
AND 1295 FT. FROM THE WEST LINE OF  
SECTION 6, TOWNSHIP 26 SOUTH,  
RANGE 35 EAST, N.M.P.M.  
LEA COUNTY, STATE OF NEW MEXICO

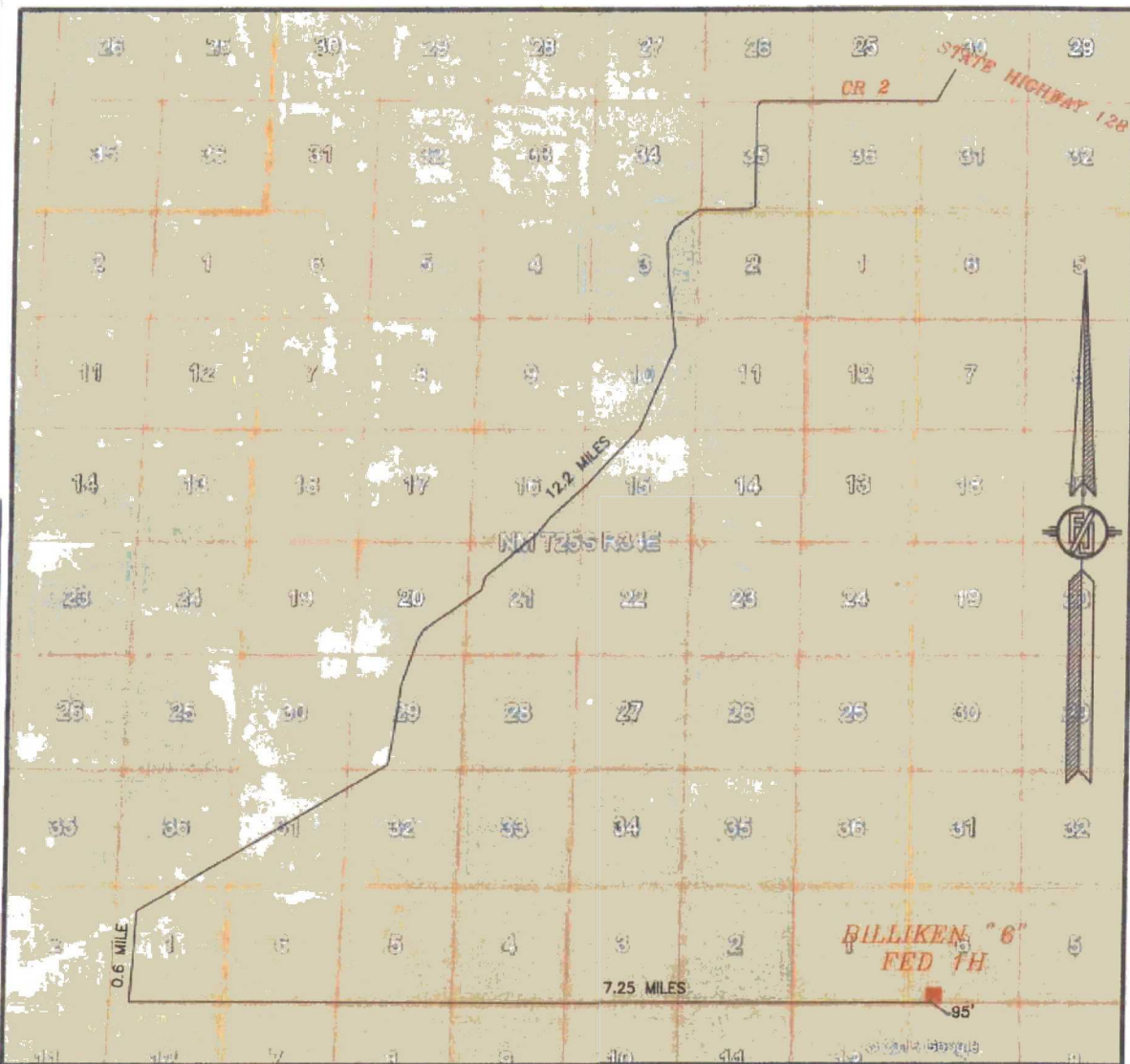
JUNE 9, 2015

SURVEY NO. 4022

MADRON SURVEYING, INC. 301 SOUTH CANAL (575) 234-3341 CARLSBAD, NEW MEXICO



SECTION 6, TOWNSHIP 26 SOUTH, RANGE 35 EAST, N.M.P.M.  
LEA COUNTY, STATE OF NEW MEXICO  
ACCESS AERIAL ROUTE MAP



NOT TO SCALE  
AERIAL PHOTO:  
GOOGLE EARTH  
APRIL 2013

DEVON ENERGY PRODUCTION COMPANY, L.P.

**BILLIKEN "6" FED 1H**

LOCATED 265 FT. FROM THE SOUTH LINE  
AND 1295 FT. FROM THE WEST LINE OF  
SECTION 6, TOWNSHIP 26 SOUTH,  
RANGE 35 EAST, N.M.P.M.  
LEA COUNTY, STATE OF NEW MEXICO

JUNE 9, 2015

SURVEY NO. 4022

MADRON SURVEYING, INC. 301 SOUTH CANAL (575) 234-3341 CARLSBAD, NEW MEXICO