

DISTRICT I
1625 N. French Dr., Hobbs, NM 88240
Phone: (575) 393-6161 Fax: (575) 393-0720

DISTRICT II
811 S. First St., Artesia, NM 88210
Phone: (575) 748-1283 Fax: (575) 748-9720

DISTRICT III
1000 Rio Brazos Road, Aztec, NM 87410
Phone: (505) 334-6178 Fax: (505) 334-6170

DISTRICT IV
1220 S. St. Francis Dr., Santa Fe, NM 87505
Phone: (505) 476-3460 Fax: (505) 476-3462

State of New Mexico
Energy, Minerals & Natural Resources Department
OIL CONSERVATION DIVISION
1220 South St. Francis Dr.
Santa Fe, New Mexico 87505

HOBBS OCC
JUL 31 2017
RECEIVED

Form C-102
Revised August 1, 2011
Submit one copy to appropriate
District Office

□ AMENDED REPORT

WELL LOCATION AND ACREAGE DEDICATION PLAT

API Number	Pool Code	Pool Name
Property Code	Property Name SALTY DOG	Well Number 1-6
OGRID No.	Operator Name GULF EXPLORATION, L.L.C.	Elevation 3946'

Surface Location

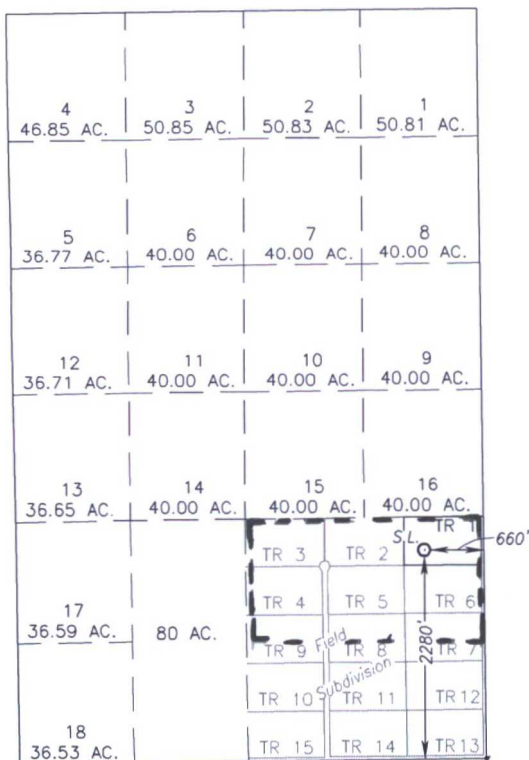
UL or lot No. TRACT 1 Field Subdivision	Section 6	Township 16-S	Range 36-E	Lot Idn	Feet from the 2280	North/South line SOUTH	Feet from the 660	East/West line EAST	County LEA
--	---------------------	-------------------------	----------------------	---------	------------------------------	----------------------------------	-----------------------------	-------------------------------	----------------------

Bottom Hole Location If Different From Surface

UL or lot No.	Section	Township	Range	Lot Idn	Feet from the	North/South line	Feet from the	East/West line	County
Dedicated Acres	Joint or Infill	Consolidation Code	Order No.						

NO ALLOWABLE WILL BE ASSIGNED TO THIS COMPLETION UNTIL ALL INTERESTS HAVE BEEN CONSOLIDATED OR A NON-STANDARD UNIT HAS BEEN APPROVED BY THE DIVISION

SCALE: 1"=2000'



GEODETIC COORDINATES
NAD 27 NME
SURFACE LOCATION
Y= 710628.7 N
X= 790202.6 E
LAT.=32.950009° N
LONG.=103.387314° W

GEODETIC COORDINATES
NAD 83 NME
SURFACE LOCATION
Y= 710693.9 N
X= 831380.1 E
LAT.=32.950129° N
LONG.=103.387813° W

OPERATOR CERTIFICATION

I hereby certify that the information herein is true and complete to the best of my knowledge and belief, and that this organization either owns a working interest or unleased mineral interest in the land including the proposed bottom hole location or has a right to drill this well at this location pursuant to a contract with an owner of such mineral or working interest, or to a voluntary pooling agreement or a compulsory pooling order heretofore entered by the division.

Signature: *Pat McGraw* Date: *6/30/17*

Printed Name: *Pat McGraw*

E-mail Address: *pmcgraw@gulfexploration.com*

SURVEYOR CERTIFICATION

I hereby certify that the well location shown on this plat was plotted from field notes of actual surveys made by me or under my supervision, and that the same is true and correct to the best of my belief.

JUNE 21, 2017

Date of Survey: *June 21, 2017*
Signature & Seal of Professional Surveyor:

Ronald J. Eidson
NEW MEXICO
REGISTERED SURVEYOR
3239
Certificate Number: *12641*
Ronald J. Eidson: *3239*
ACK JWSC W.O.: 17.11.0597