

HOBBS OCD

HOBBS OCD

District I
1625 N. French Dr., Hobbs, NM 88240
Phone: (575) 393-6161 Fax: (575) 393-0720
District II
811 S. First St., Artesia, NM 88210
Phone: (575) 748-1283 Fax: (575) 748-9720
District III
1000 Rio Brazos Road, Aztec, NM 87410
Phone: (505) 334-6178 Fax: (505) 334-6170
District IV
1220 S. St. Francis Dr., Santa Fe, NM 87505
Phone: (505) 476-3460 Fax: (505) 476-3462

State of New Mexico

Energy, Minerals & Natural Resources Department
OIL CONSERVATION DIVISION

Form C-102
Revised August 1, 2011
Submit one copy to appropriate
District Office

AUG 17 2016

MAR 28 2016

RECEIVED

RECEIVED

1220 South St. Francis Dr.
Santa Fe, NM 87505

AMENDED REPORT

WELL LOCATION AND ACREAGE DEDICATION PLAT

¹ API Number 30-025-43138	² Pool Code 51687	³ Pool Name Red Tank; Bone Spring, East
⁴ Property Code 313309	⁵ Property Name CHILI PARLOR 17 FEDERAL	
⁷ OGRID No. 160825	⁸ Operator Name B.C. OPERATING, INC.	⁶ Well Number 3H
		⁹ Elevation 3569

" Surface Location

UL or lot no.	Section	Township	Range	Lot Idn	Feet from the	North/South line	Feet from the	East/West line	County
0	8	T22S	R33E		240'	SOUTH	2200'	EAST	LEA

" Bottom Hole Location If Different From Surface

UL or lot no.	Section	Township	Range	Lot Idn	Feet from the	North/South line	Feet from the	East/West line	County
0	17	T22S	R33E		240'	SOUTH	2200'	EAST	LEA

¹² Dedicated Acres 160.00	¹³ Joint or Infill	¹⁴ Consolidation Code	¹⁵ Order No.
---	-------------------------------	----------------------------------	-------------------------

No allowable will be assigned to this completion until all interests have been consolidated or a non-standard unit has been approved by the division.

¹⁶ SECTION 7 SECTION 18 SECTION 19 SECTION 20 CORNER COORDINATES NAD 27, SPCS NM EAST A - Y: 509649.32' / X: 728172.46' B - Y: 509650.91' / X: 729488.57' C - Y: 504369.73' / X: 729535.61' D - Y: 504364.42' / X: 728217.65'	CORNER COORDINATES NAD 83, SPCS NM EAST A - Y: 509709.94' / X: 769354.95' B - Y: 509711.53' / X: 770671.07' C - Y: 504430.20' / X: 770718.23' D - Y: 504424.88' / X: 769400.27'		¹⁷ OPERATOR CERTIFICATION I hereby certify that the information contained herein is true and complete to the best of my knowledge and belief, and that this organization either owns a working interest or unleased mineral interest in the land including the proposed bottom hole location or has a right to drill this well at this location pursuant to a contract with an owner of such a mineral or working interest, or to a voluntary pooling agreement or a compulsory pooling order heretofore entered by the division. <i>Pam Stevens</i> 7/27/15 Signature Date Pam Stevens Printed Name pstevens@bcooperating.com E-mail Address
	SURFACE HOLE LOCATION 240' FSL 2200' FEL NAD 83, SPCS NM EAST X:769785.91' / Y:509950.43' LAT:32.39974813N / LDM:103.59315405W NAD 27, SPCS NM EAST X:728603.42' / Y:509889.81' LAT:32.39962484N / LDM:103.59266876V		¹⁷ OPERATOR CERTIFICATION I hereby certify that the well location shown on this plat was plotted from field notes of actual surveys made by me or under my supervision, and that the same is true and correct to the best of my belief. MARCH 02, 2015 Date of Survey Lloyd P. Short Signature and Seal of Professional Surveyor LLOYD P. SHORT 21653 Certificate Number
	FIRST TAKE POINT 330' FSL 2200' FEL NAD 83, SPCS NM EAST X:769790.18' / Y:509380.46' LAT:32.39818144N / LDM:103.59315297V NAD 27, SPCS NM EAST X:728607.68' / Y:509319.85' LAT:32.39805814N / LDM:103.59266774V		¹⁷ OPERATOR CERTIFICATION I hereby certify that the well location shown on this plat was plotted from field notes of actual surveys made by me or under my supervision, and that the same is true and correct to the best of my belief. MARCH 02, 2015 Date of Survey Lloyd P. Short Signature and Seal of Professional Surveyor LLOYD P. SHORT 21653 Certificate Number
	LAST TAKE POINT 330' FSL 2200' FEL NAD 83, SPCS NM EAST X:769833.12' / Y:504756.63' LAT:32.38547155N / LDM:103.59311755V NAD 27, SPCS NM EAST X:728650.51' / Y:504696.16' LAT:32.38534822N / LDM:103.59263274V		¹⁷ OPERATOR CERTIFICATION I hereby certify that the well location shown on this plat was plotted from field notes of actual surveys made by me or under my supervision, and that the same is true and correct to the best of my belief. MARCH 02, 2015 Date of Survey Lloyd P. Short Signature and Seal of Professional Surveyor LLOYD P. SHORT 21653 Certificate Number
BOTTOM HOLE LOCATION 240' FSL 2200' FEL NAD 83, SPCS NM EAST X:769833.96' / Y:504666.64' LAT:32.38522417N / LDM:103.59311689V NAD 27, SPCS NM EAST X:728651.35' / Y:504606.17' LAT:32.38510084N / LDM:103.59263206V	¹⁷ OPERATOR CERTIFICATION I hereby certify that the well location shown on this plat was plotted from field notes of actual surveys made by me or under my supervision, and that the same is true and correct to the best of my belief. MARCH 02, 2015 Date of Survey Lloyd P. Short Signature and Seal of Professional Surveyor LLOYD P. SHORT 21653 Certificate Number		

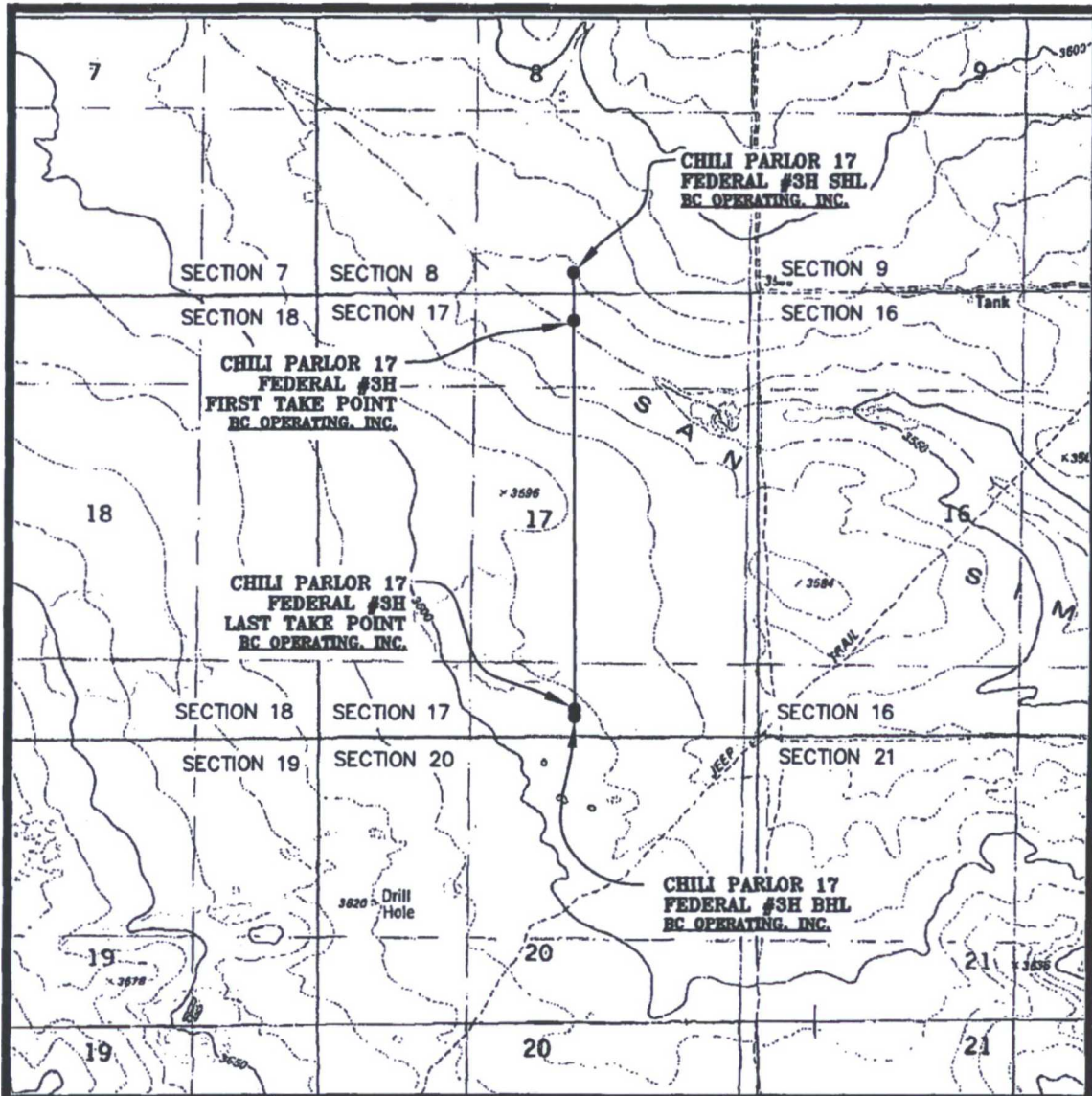
MAR 28 2016

HOBBS OCD

LOCATION VERIFICATION MAP

AUG 17 2017

RECEIVED

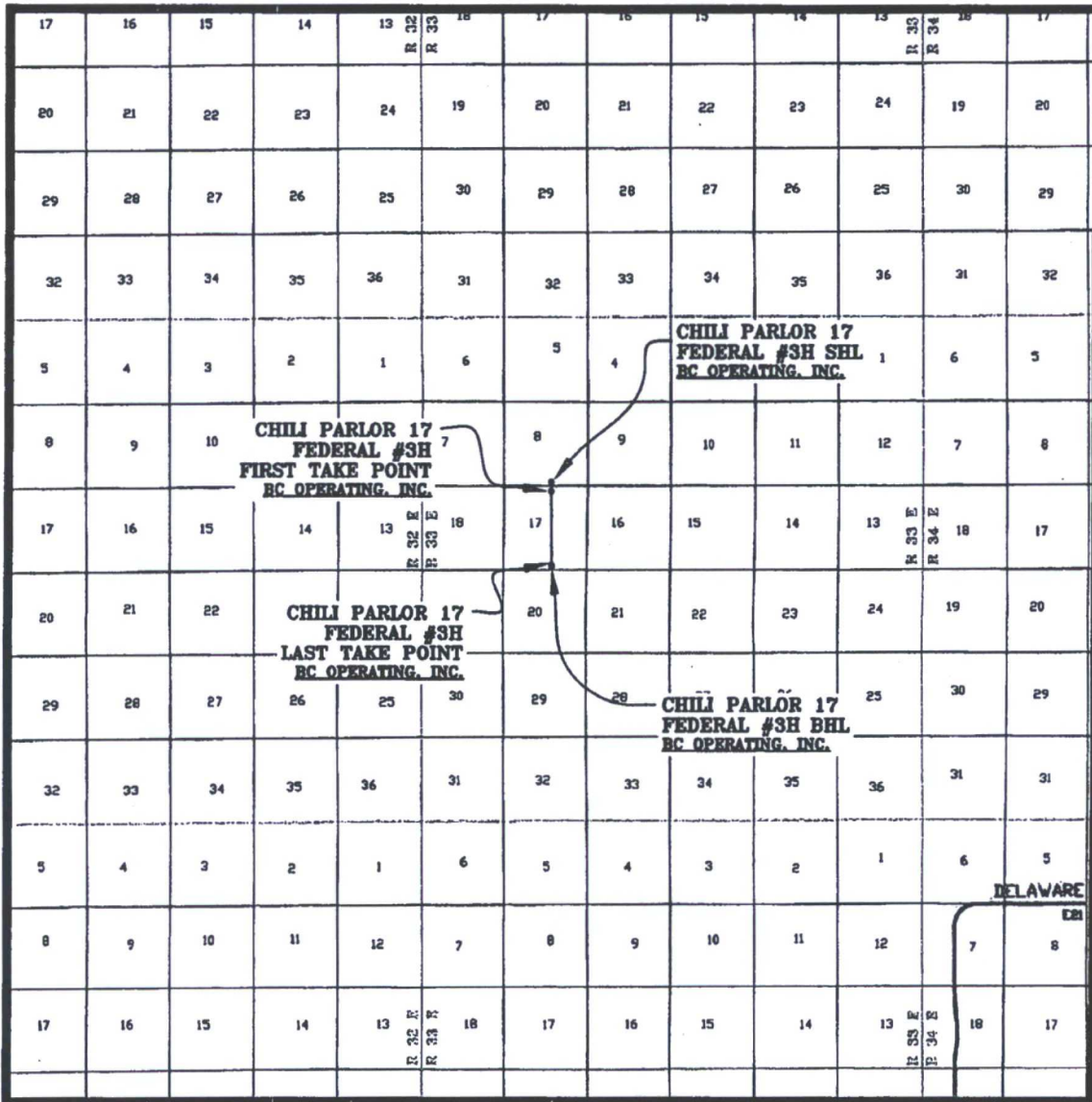


SEC. 8 TWP. 22-S RGE. 33-E
SURVEY: N.M.P.M.
COUNTY: LEA
DESCRIPTION: 240' FSL & 2200' FEL
ELEVATION: 3569'
OPERATOR: B.C. OPERATING, INC.
LEASE: CHILI PARLOR 17 FEDERAL
U.S.G.S. TOPOGRAPHIC MAP: GRAMA RIDGE, N.M.

SCALE: 1" = 2000'
CONTOUR INTERVAL = 10'

PREPARED BY:
R-SQUARED GLOBAL, LLC
1309 LOUISVILLE AVENUE, MONROE, LA 71201
318-323-8900 OFFICE
JOB No. R3402_001

VICINITY MAP



SEC. 8 TWP. 22-S RGE. 33-E
 SURVEY: N.M.P.M.
 COUNTY: LEA
 DESCRIPTION: 240' FSL & 2200' FEL
 ELEVATION: 3569'
 OPERATOR: B.C. OPERATING, INC.
 LEASE: CHILI PARLOR 17 FEDERAL
 U.S.G.S. TOPOGRAPHIC MAP: GRAMA RIDGE, N.M.

SCALE: 1" = 2 MILES

PREPARED BY:
 R-SQUARED GLOBAL, LLC
 1309 LOUISVILLE AVENUE, MONROE, LA 71201
 518-323-8900 OFFICE
 JOB No. RS402_001

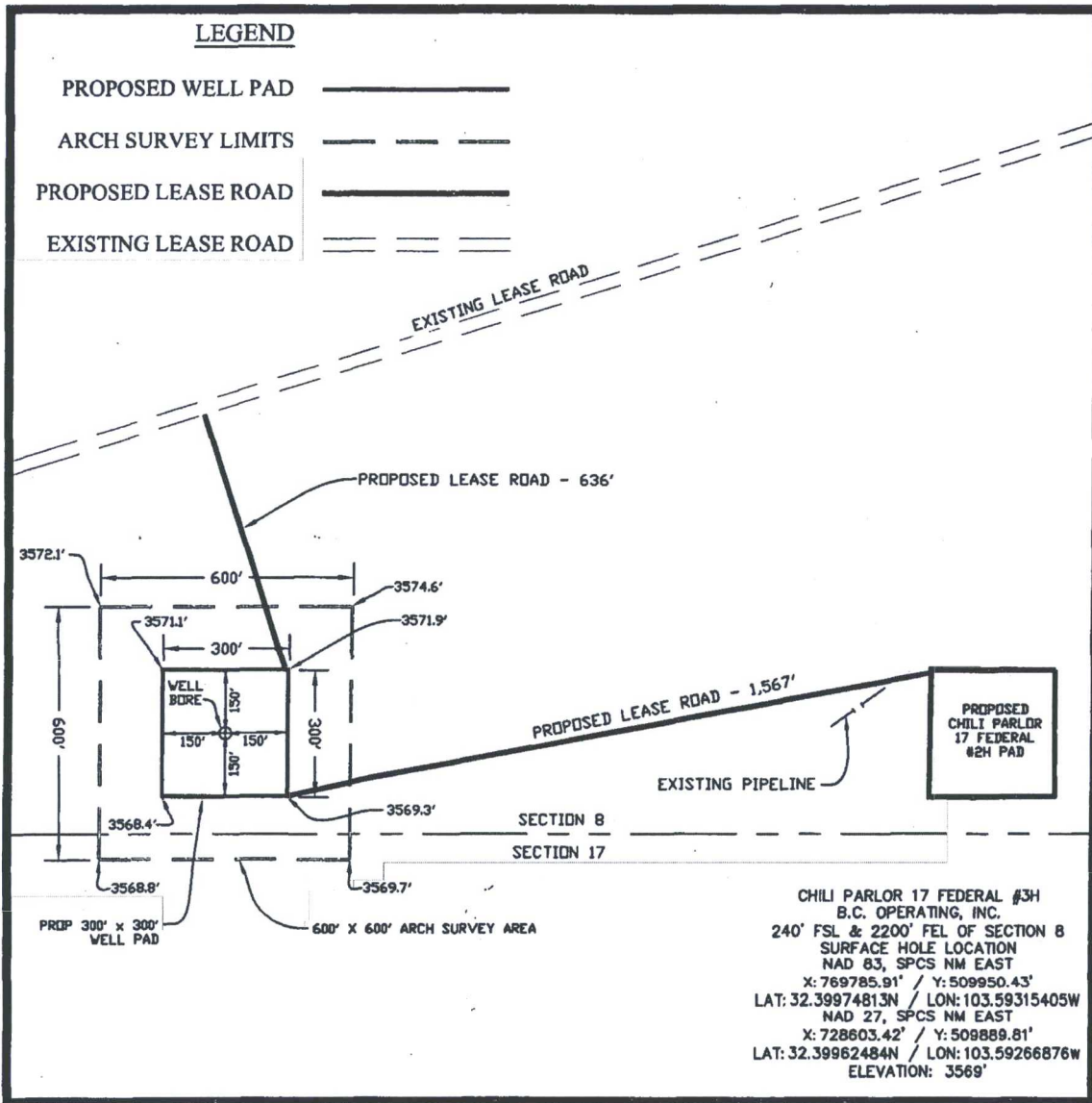
WELL PAD TOPO

SEC. 8 TWP. 22-S RGE. 33-E

SURVEY: N.M.P.M.

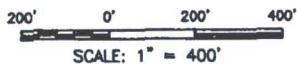
COUNTY: LEA

U.S.G.S. TOPOGRAPHIC MAP: GRAMA RIDGE, N.M.



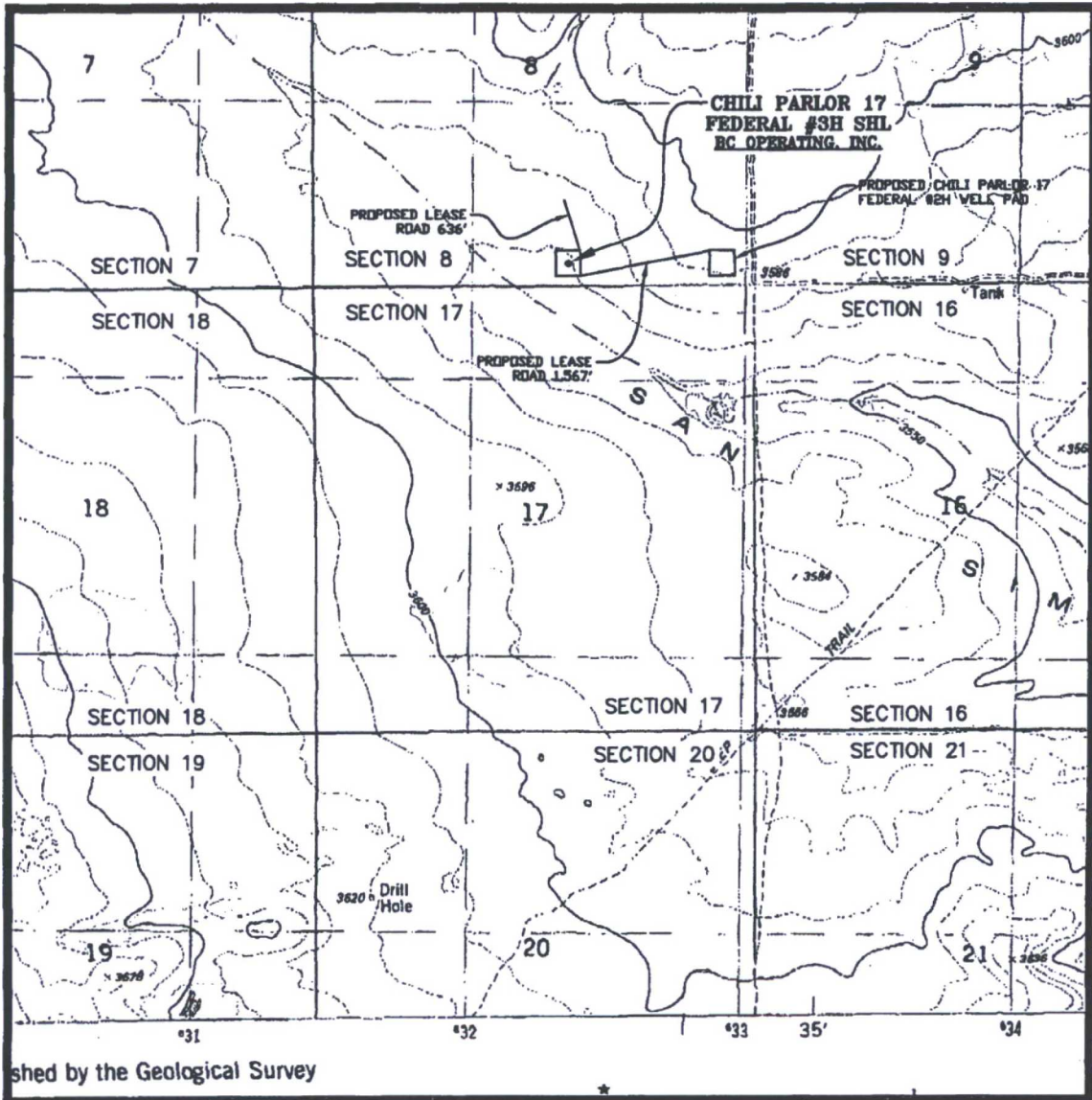
DIRECTIONS TO LOCATION:

FROM THE INTERSECTION OF WEST CARLSBAD HIGHWAY AND HIGHWAY 176 TRAVEL SOUTHEAST ON HIGHWAY 176 FOR 6.4 MILES TO LEASE ROAD ON THE RIGHT. TRAVEL SOUTH ON LEASE ROAD FOR 10.8 MILES TO LEASE ROAD ON THE LEFT. TRAVEL EAST ON LEASE ROAD FOR 0.6 MILES TO LEASE ROAD ON THE LEFT. TRAVEL NORTH ON LEASE ROAD FOR 1.2 MILES TO LEASE ROAD ON THE RIGHT. TRAVEL EAST ON EAST ROAD FOR 0.9 MILES TO PROPOSED WELL PAD 636 FEET ON THE RIGHT.



PREPARED BY:
R-SQUARED GLOBAL, LLC
1309 LOUISVILLE AVENUE, MONROE, LA 71201
318-323-6900 OFFICE
JOB No. R3402_001

WELL PAD LOCATION VERIFICATION MAP



shed by the Geological Survey

SEC. 8 TWP. 22-S RGE. 33-E
 SURVEY: N.M.P.M.
 COUNTY: LEA
 DESCRIPTION: 240' FSL & 2200' FEL
 ELEVATION: 3569'
 OPERATOR: B.C. OPERATING, INC.
 LEASE: CHILI PARLOR 17 FEDERAL
 U.S.G.S. TOPOGRAPHIC MAP: GRAMA RIDGE, N.M.

SCALE: 1" = 2000'
 CONTOUR INTERVAL = 10'

PREPARED BY:
 R-SQUARED GLOBAL, LLC
 1309 LOUISVILLE AVENUE, MONROE, LA 71201
 318-323-6900 OFFICE
 JOB No. RS402_001

