

District I
1625 N. French Dr., Hobbs, NM 88240
Phone: (575) 393-6161 Fax: (575) 393-0720
District II
811 S. First St., Artesia, NM 88210
Phone: (575) 748-1283 Fax: (575) 748-9720
District III
1000 Rio Brazos Road, Aztec, NM 87410
Phone: (505) 334-6178 Fax: (505) 334-6170
District IV
1220 S. St. Francis Dr., Santa Fe, NM 87505
Phone: (505) 476-3460 Fax: (505) 476-3462

State of New Mexico
Energy, Minerals & Natural Resources Department
OIL CONSERVATION DIVISION
1220 South St. Francis Dr.
Santa Fe, NM 87505

Form C-102
Revised August 1, 2011
Submit one copy to appropriate
District Office

☐ AMENDED REPORT

WELL LOCATION AND ACREAGE DEDICATION PLAT

¹ API Number 30-025-44040	² Pool Code 96553	³ Pool Name Ojo Chiso; Bone Spring
⁴ Property Code 319612	⁵ Property Name CANNON BS3 STATE COM	⁶ Well Number 1H
⁷ OGRID No. 372031	⁸ Operator Name OneEnergy Partners Operating LLC	⁹ Elevation 3550.1'

¹⁰ Surface Location

UL or lot no.	Section	Township	Range	Lot Idn	Feet from the	North/South line	Feet from the	East/West line	County
A	30	22S	35E		220	NORTH	635	EAST	LEA

¹¹ Bottom Hole Location If Different From Surface

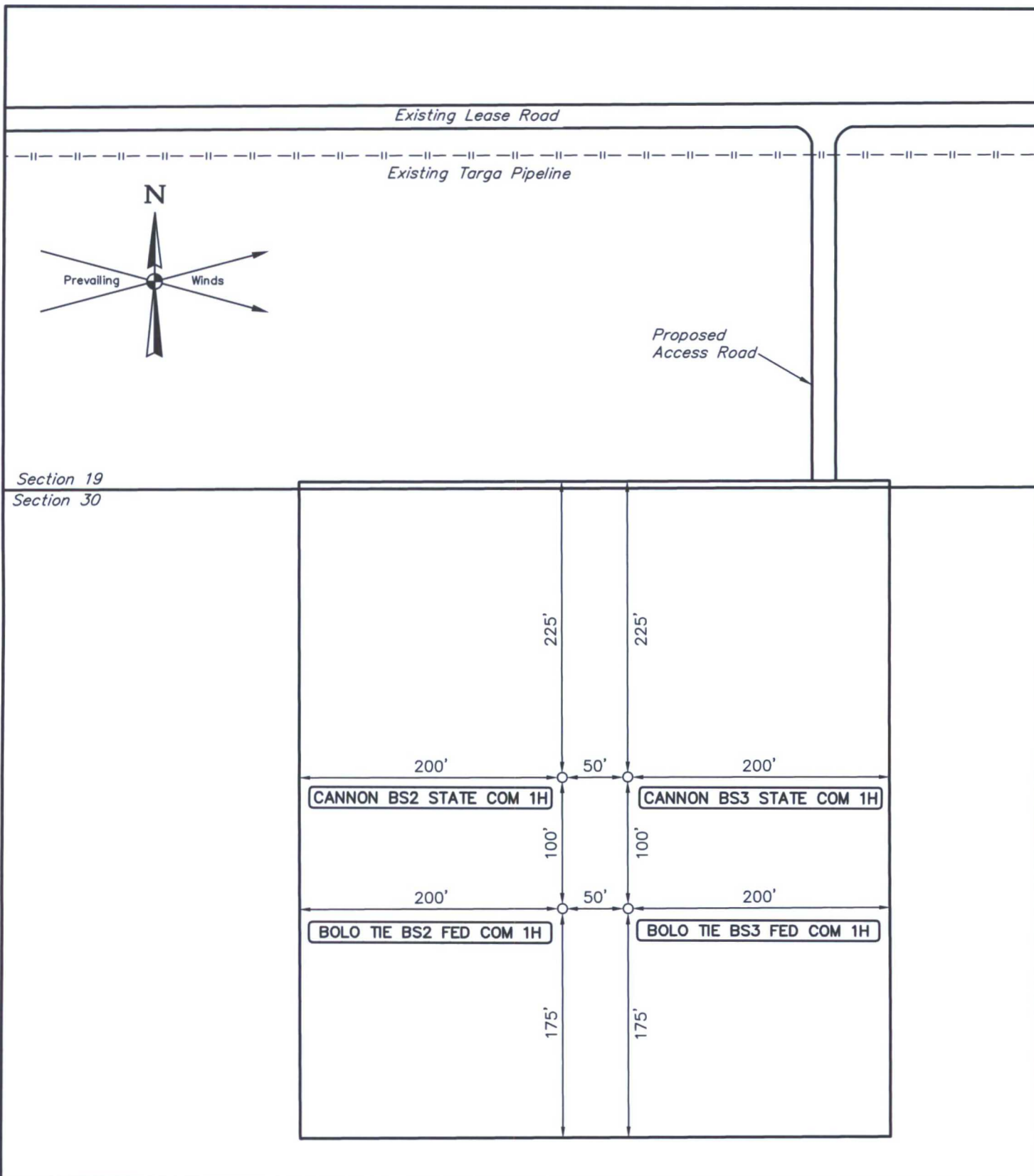
UL or lot no.	Section	Township	Range	Lot Idn	Feet from the	North/South line	Feet from the	East/West line	County
I	18	22S	35E		2260	SOUTH	380	EAST	LEA
¹² Dedicated Acres 240	¹³ Joint or Infill	¹⁴ Consolidation Code	¹⁵ Order No.						

No allowable will be assigned to this completion until all interests have been consolidated or a non-standard unit has been approved by the division.

16

17 OPERATOR CERTIFICATION
I hereby certify that the information contained herein is true and complete to the best of my knowledge and belief, and that this organization either owns a working interest or unleased mineral interest in the land including the proposed bottom hole location or has a right to drill this well at this location pursuant to a contract with an owner of such a mineral or working interest, or to a voluntary pooling agreement or a compulsory pooling order heretofore entered by the division.
Signature: *Jeff Lierly* Date: 9/14/2017
Printed Name: Jeff Lierly
E-mail Address: jlierly@oneenergypartners.com

18 SURVEYOR CERTIFICATION
I hereby certify that the well location shown on this plat was plotted from field notes of actual surveys made by me or under my supervision, and that the same is true and correct to the best of my belief.
August 17, 2017
Date of Survey
Signature and Seal of Professional Surveyor:
Paul Buchele
PAUL BUCHELE
NEW MEXICO
23182
08-31-17
PROFESSIONAL SURVEYOR
Certificate Number:



NOTES:

OneEnergy Partners Operating LLC

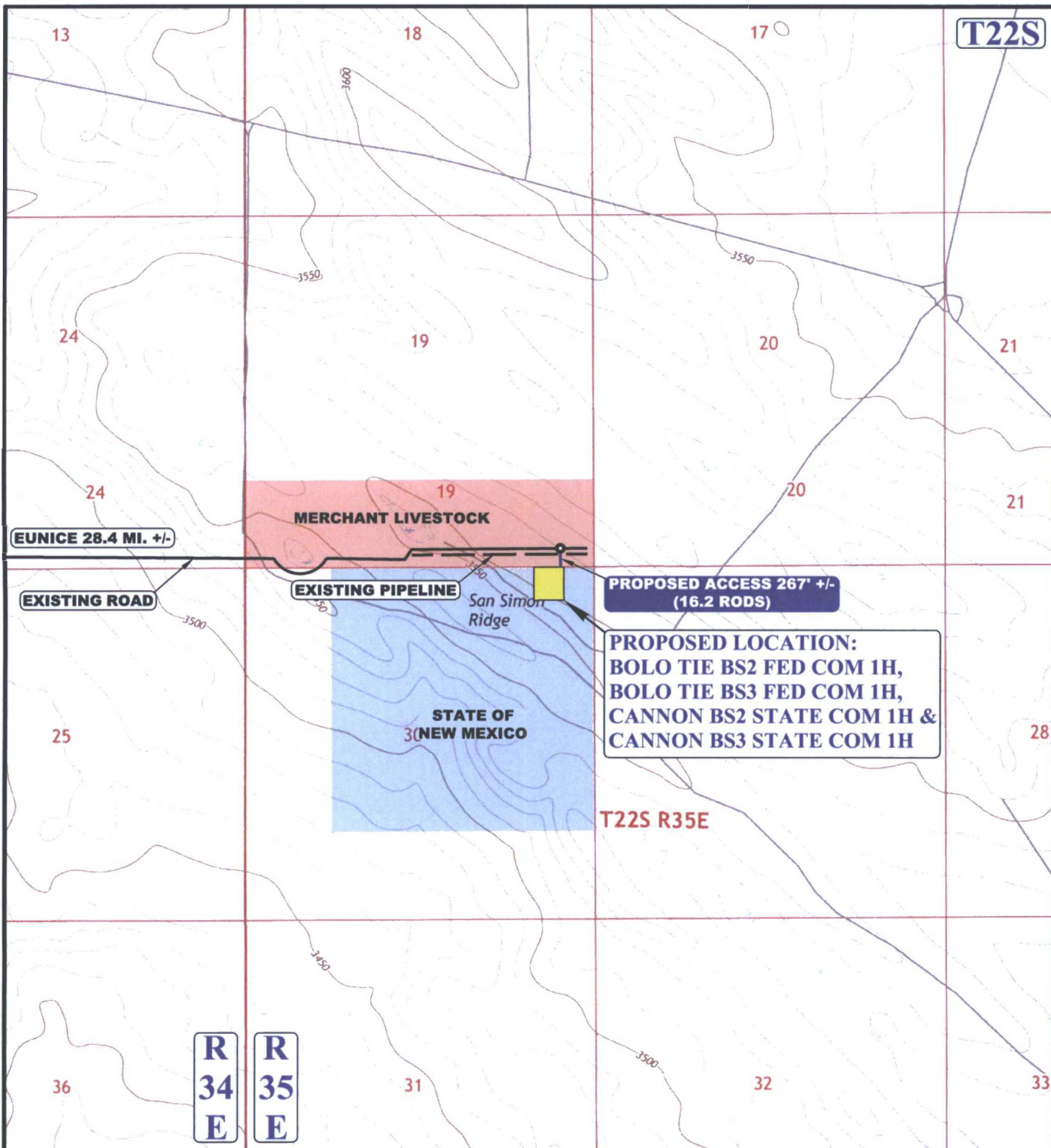
**BOLO TIE BS2 FED COM 1H, BOLO TIE BS3 FED COM 1H,
CANNON BS2 STATE COM 1H & CANNON BS3 STATE COM 1H
NE 1/4 NE 1/4, SECTION 30, T22S, R35E, N.M.P.M.
LEA COUNTY, NEW MEXICO**

SURVEYED BY	C.T., J.R.	08-17-17	SCALE
DRAWN BY	R.T.	08-30-17	1" = 100'

SITE PLAN



UELS, LLC
Corporate Office * 85 South 200 East
Vernal, UT 84078 * (435) 789-1017



NOTE: PARCEL DATA SHOWN HAS BEEN OBTAINED FROM VARIOUS SOURCES AND SHOULD BE USED FOR MAPPING, GRAPHIC AND PLANNING PURPOSES ONLY. NO WARRANTY IS MADE BY UINTAH ENGINEERING AND LAND SURVEYING (UELS) FOR ACCURACY OF THE PARCEL DATA.

LEGEND:

- EXISTING ROAD
- - - PROPOSED ROAD
- - - EXISTING PIPELINE



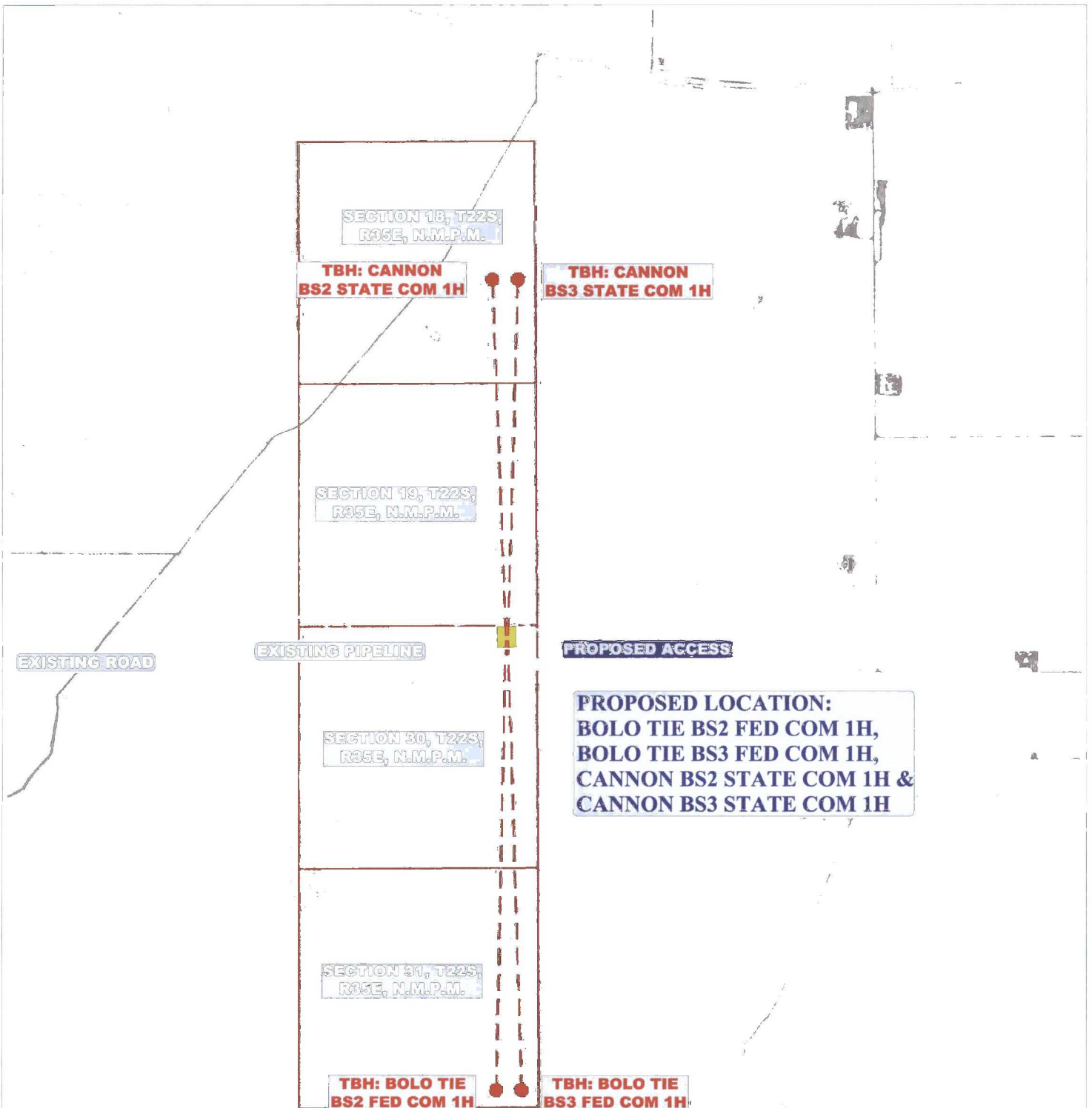
UELS, LLC
Corporate Office * 85 South 200 East
Vernal, UT 84078 * (435) 789-1017



OneEnergy Partners Operating LLC

**BOLO TIE BS2 FED COM 1H, BOLO TIE BS3 FED COM 1H,
CANNON BS2 STATE COM 1H & CANNON BS3 STATE COM 1H
NE 1/4 NE 1/4, SECTION 30, T22S, R35E, N.M.P.M.
LEA COUNTY, NEW MEXICO**

SURVEYED BY	C.T., J.R.	08-17-17	SCALE
DRAWN BY	R.T.	08-30-17	1 : 24,000
ACCESS ROAD MAP			TOPO B



LEGEND:

- EXISTING ROAD
- - - PROPOSED ROAD
- - - EXISTING PIPELINE



UIELS, LLC
 Corporate Office • 85 South 200 East
 Vernal, UT 84078 • (435) 789-1017



OneEnergy Partners Operating LLC

BOLO TIE BS2 FED COM 1H, BOLO TIE BS3 FED COM 1H,
 CANNON BS2 STATE COM 1H & CANNON BS3 STATE COM 1H
 NE 1/4 NE 1/4, SECTION 30, T22S, R35E, N.M.P.M.
 LEA COUNTY, NEW MEXICO

SURVEYED BY	C.T. I.R.	08-17-17	SCALE
DRAWN BY	R.T.	08-30-17	1:36,000
AERIAL MAP			TOPO 1