



**NMOCD
FILING
FOR**

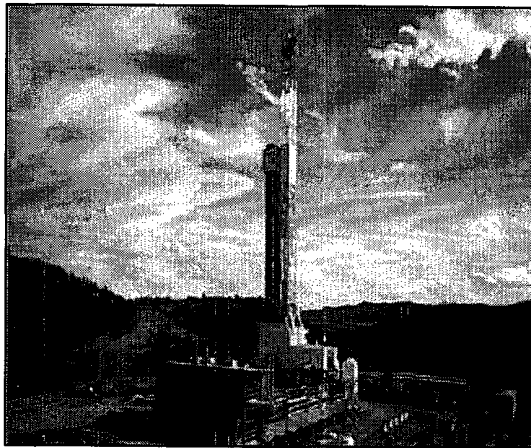
SUR: M-14-17s-36e, 330/S & 330/W
BHL: L-14-17s-36e, 2224/S & 541/W
API #30-025-36906

**Arrington Oil & Gas Inc.
Miracle Nymph State 14-1
Lea County, NM**

June 23, 2005

Prepared By:

Y.P. Ortez
Sr. Drilling Systems Engineer



SURVEY CERTIFICATION

State of New Mexico

County of Lea

I, Ricky Neagle, certify that; I am employed by Weatherford Directional Services.
That I did on the day(s) of May 21, 2005 through June 7, 2005 conduct or supervise the taking of MWD surveys from a depth of 9139' to a depth of 11000'. I furthermore state that the data is true, correct, complete and within the limitations of the tool as set forth by Weatherford Directional Services. I am authorized and qualified to make this report. That these surveys were conducted at the request of Arrington Oil & Gas Inc., on the Miracle Nymph State 14-1 in Lea County, NM. I have reviewed this report and find that it conforms to the principles and procedures as set forth by Weatherford Directional Services.

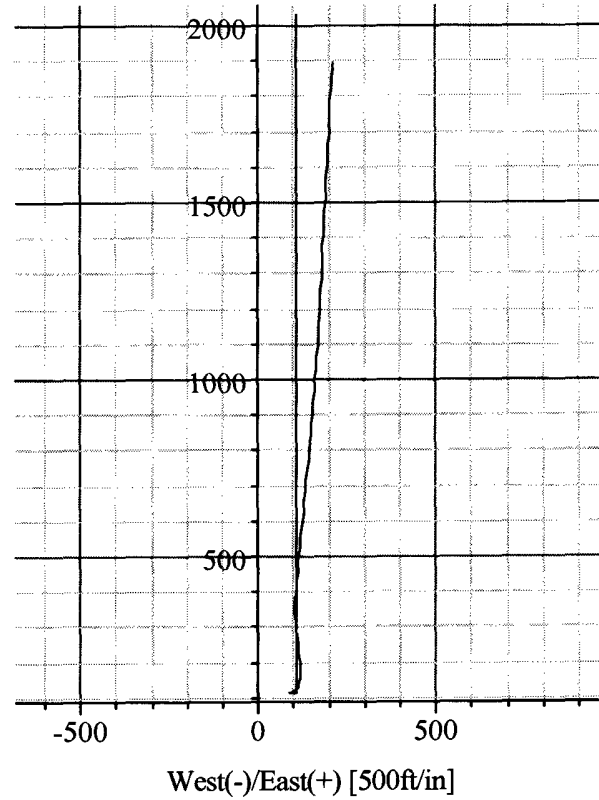
Ricky Neagle -- Survey Supervisor





**ARRINGTON OIL & GAS INC.
MIRACLE NYMPH STATE14-1
LEA COUNTY, NM
Final Actual vs. Plan**

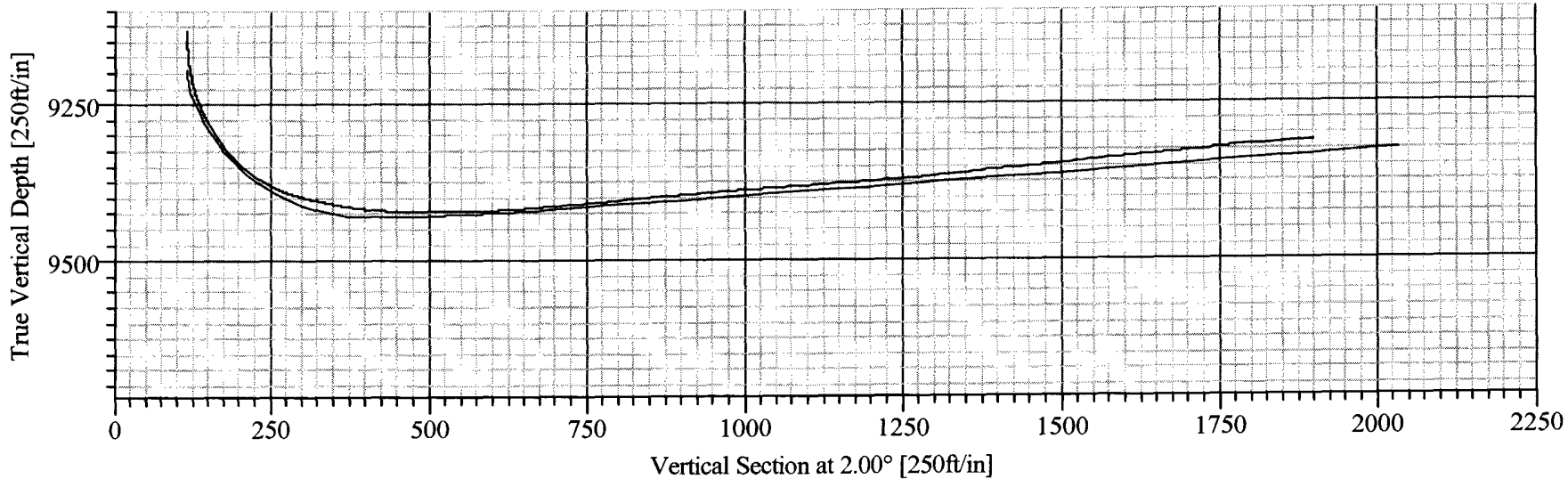


South(-)/North(+) [500ft/in]



LEGEND

-  Horizontal Leg, 1, Final
-  Horizontal Leg



Company: Arrington Oil & Gas Inc. **Date:** 6/20/2005 **Time:** 14:17:30 **Page:** 1
Field: State 14 **Co-ordinate(NE) Reference:** Well: Horizontal Leg, Grid North
Site: Miracle Nymph State 14-1 **Vertical (TVD) Reference:** SITE 0.0
Well: Horizontal Leg **Section (VS) Reference:** User (0.00N,0.00E,2.00Azi)
Wellpath: 1 **Survey Calculation Method:** Minimum Curvature **Db:** Sybase

Field: State 14
 Lea Co., NM
Map System: US State Plane Coordinate System 1927 **Map Zone:** New Mexico, Eastern Zone
Geo Datum: NAD27 (Clarke 1866) **Coordinate System:** Well Centre
Sys Datum: Mean Sea Level **Geomagnetic Model:** igrf2005

Site: Miracle Nymph State 14-1
 Sec 14, T17S, R36E
Site Position: Northing: 666584.00 ft Latitude: 32 49 42.679 N
From: Map Easting: 807521.00 ft Longitude: 103 19 56.020 W
Position Uncertainty: 0.00 ft North Reference: Grid
Ground Level: 0.00 ft Grid Convergence: 0.54 deg

Well: Horizontal Leg **Slot Name:**
Well Position: +N/-S 0.00 ft Northing: 666584.00 ft Latitude: 32 49 42.679 N
 +E/-W 0.00 ft Easting: 807521.00 ft Longitude: 103 19 56.020 W
Position Uncertainty: 0.00 ft

Wellpath: 1 **Drilled From:** Surface
Current Datum: SITE **Height** 0.00 ft **Tie-on Depth:** 0.00 ft
Magnetic Data: 5/24/2005 **Above System Datum:** Mean Sea Level
Field Strength: 49660 nT **Declination:** 8.24 deg
Vertical Section: Depth From (TVD) +N/-S Mag Dip Angle: 60.95 deg
 ft ft +E/-W Direction
 ft deg
 0.00 0.00 0.00 2.00

Survey: Final **Start Date:** 6/20/2005
Company: Weatherford International, Inc **Engineer:** Ybes Ortez
Tool: **Tied-to:** From: MWD

Survey: Final

MD ft	Incl deg	Azim deg	TVD ft	+N/-S ft	+E/-W ft	Map Northing ft	Map Easting ft	← Latitude →			← Longitude →				
								Deg	Min	Sec	Deg	Min	Sec		
9139.00	10.70	90.30	9132.98	113.00	89.90	666697.00	807610.90	32	49	43.789	N	103	19	54.954	W
9185.00	11.80	59.60	9178.13	115.36	98.24	666699.36	807619.24	32	49	43.811	N	103	19	54.856	W
9221.00	17.80	48.20	9212.93	120.90	105.52	666704.90	807626.52	32	49	43.866	N	103	19	54.770	W
9253.00	23.00	26.60	9242.95	129.77	111.98	666713.77	807632.98	32	49	43.953	N	103	19	54.694	W
9286.00	27.90	11.50	9272.77	143.12	116.41	666727.12	807637.41	32	49	44.084	N	103	19	54.640	W
9317.00	32.70	1.30	9299.55	158.62	118.05	666742.62	807639.05	32	49	44.238	N	103	19	54.619	W
9349.00	40.00	358.70	9325.31	177.57	118.01	666761.57	807639.01	32	49	44.425	N	103	19	54.618	W
9381.00	47.60	357.30	9348.39	199.69	117.22	666783.69	807638.22	32	49	44.644	N	103	19	54.624	W
9411.00	56.70	354.60	9366.78	223.28	115.52	666807.28	807636.52	32	49	44.878	N	103	19	54.642	W
9443.00	64.70	352.90	9382.42	251.00	112.47	666835.00	807633.47	32	49	45.152	N	103	19	54.675	W
9475.00	72.90	353.60	9393.99	280.60	108.97	666864.60	807629.97	32	49	45.445	N	103	19	54.712	W
9507.00	76.70	356.60	9402.38	311.36	106.34	666895.36	807627.34	32	49	45.750	N	103	19	54.740	W
9534.00	78.40	358.70	9408.20	337.70	105.26	666921.70	807626.26	32	49	46.011	N	103	19	54.749	W
9566.00	81.00	0.90	9413.92	369.18	105.15	666953.18	807626.15	32	49	46.322	N	103	19	54.747	W
9598.00	84.10	3.10	9418.07	400.89	106.26	666984.89	807627.26	32	49	46.636	N	103	19	54.731	W
9630.00	87.20	5.10	9420.50	432.71	108.54	667016.71	807629.54	32	49	46.950	N	103	19	54.700	W
9662.00	87.90	5.30	9421.86	464.54	111.44	667048.54	807632.44	32	49	47.265	N	103	19	54.663	W
9693.00	89.30	5.90	9422.62	495.39	114.46	667079.39	807635.46	32	49	47.570	N	103	19	54.624	W
9725.00	91.20	5.90	9422.48	527.22	117.75	667111.22	807638.75	32	49	47.884	N	103	19	54.582	W
9757.00	91.50	5.90	9421.73	559.04	121.04	667143.04	807642.04	32	49	48.199	N	103	19	54.540	W
9789.00	91.60	5.90	9420.86	590.86	124.33	667174.86	807645.33	32	49	48.514	N	103	19	54.498	W
9821.00	93.30	5.90	9419.49	622.66	127.62	667206.66	807648.62	32	49	48.828	N	103	19	54.456	W
9853.00	95.20	5.50	9417.12	654.41	130.78	667238.41	807651.78	32	49	49.142	N	103	19	54.415	W

Company: Arrington Oil & Gas Inc.
 Field: State 14
 Site: Miracle Nymph State 14-1
 Well: Horizontal Leg
 Wellpath: 1

Date: 6/20/2005
 Co-ordinate(NE) Reference:
 Vertical (TVD) Reference:
 Section (VS) Reference:
 Survey Calculation Method:

Time: 14:17:30
 Page: 2
 Well: Horizontal Leg, Grid North
 SITE 0.0
 User (0.00N,0.00E,2.00Azi)
 Minimum Curvature
 Db: Sybase

Survey: Final

MD ft	Incl deg	Azim deg	TVD ft	+N/-S ft	+E/-W ft	Map Northing ft	Map Easting ft	← Latitude →			← Longitude →		
								Deg	Min	Sec	Deg	Min	Sec
9885.00	94.20	5.60	9414.50	686.15	133.87	667270.15	807654.87	32	49	49.455 N	103	19	54.375 W
9917.00	94.10	5.50	9412.19	717.92	136.96	667301.92	807657.96	32	49	49.769 N	103	19	54.336 W
9949.00	94.30	5.30	9409.84	749.69	139.96	667333.69	807660.96	32	49	50.084 N	103	19	54.297 W
9981.00	95.10	5.50	9407.22	781.44	142.96	667365.44	807663.96	32	49	50.397 N	103	19	54.258 W
10012.00	95.30	5.50	9404.41	812.17	145.92	667396.17	807666.92	32	49	50.701 N	103	19	54.220 W
10044.00	95.30	5.10	9401.45	843.90	148.86	667427.90	807669.86	32	49	51.015 N	103	19	54.182 W
10076.00	95.30	5.00	9398.50	875.64	151.67	667459.64	807672.67	32	49	51.329 N	103	19	54.146 W
10108.00	94.70	4.70	9395.71	907.40	154.36	667491.40	807675.36	32	49	51.643 N	103	19	54.111 W
10140.00	94.90	4.90	9393.03	939.18	157.03	667523.18	807678.03	32	49	51.957 N	103	19	54.076 W
10172.00	95.00	5.10	9390.27	970.94	159.81	667554.94	807680.81	32	49	52.271 N	103	19	54.040 W
10204.00	94.00	4.30	9387.76	1002.73	162.42	667586.73	807683.42	32	49	52.585 N	103	19	54.006 W
10235.00	93.70	4.00	9385.68	1033.58	164.66	667617.58	807685.66	32	49	52.890 N	103	19	53.976 W
10267.00	94.10	3.90	9383.50	1065.43	166.86	667649.43	807687.86	32	49	53.205 N	103	19	53.947 W
10299.00	93.90	3.80	9381.27	1097.28	169.00	667681.28	807690.00	32	49	53.520 N	103	19	53.918 W
10330.00	93.60	3.60	9379.24	1128.15	171.00	667712.15	807692.00	32	49	53.825 N	103	19	53.891 W
10362.00	93.50	3.50	9377.26	1160.03	172.98	667744.03	807693.98	32	49	54.140 N	103	19	53.864 W
10394.00	94.20	3.20	9375.11	1191.90	174.84	667775.90	807695.84	32	49	54.455 N	103	19	53.839 W
10426.00	94.80	2.60	9372.60	1223.76	176.46	667807.76	807697.46	32	49	54.771 N	103	19	53.817 W
10458.00	94.60	2.60	9369.98	1255.62	177.90	667839.62	807698.90	32	49	55.086 N	103	19	53.796 W
10490.00	96.00	2.40	9367.02	1287.45	179.29	667871.45	807700.29	32	49	55.400 N	103	19	53.776 W
10522.00	95.80	2.60	9363.73	1319.25	180.68	667903.25	807701.68	32	49	55.715 N	103	19	53.756 W
10554.00	95.70	2.60	9360.53	1351.06	182.13	667935.06	807703.13	32	49	56.029 N	103	19	53.736 W
10585.00	95.50	2.80	9357.50	1381.87	183.58	667965.87	807704.58	32	49	56.334 N	103	19	53.716 W
10617.00	95.10	3.00	9354.55	1413.70	185.19	667997.70	807706.19	32	49	56.649 N	103	19	53.693 W
10649.00	95.00	3.10	9351.73	1445.53	186.89	668029.53	807707.89	32	49	56.964 N	103	19	53.670 W
10681.00	96.00	3.00	9348.66	1477.33	188.58	668061.33	807709.58	32	49	57.278 N	103	19	53.646 W
10713.00	95.90	3.00	9345.35	1509.12	190.25	668093.12	807711.25	32	49	57.593 N	103	19	53.623 W
10745.00	95.80	3.20	9342.08	1540.90	191.97	668124.90	807712.97	32	49	57.907 N	103	19	53.600 W
10776.00	95.60	3.30	9339.01	1571.70	193.72	668155.70	807714.72	32	49	58.211 N	103	19	53.576 W
10808.00	94.90	3.00	9336.08	1603.52	195.47	668187.52	807716.47	32	49	58.526 N	103	19	53.552 W
10839.00	94.60	3.00	9333.51	1634.37	197.09	668218.37	807718.09	32	49	58.831 N	103	19	53.529 W
10871.00	95.20	2.30	9330.78	1666.22	198.56	668250.22	807719.56	32	49	59.146 N	103	19	53.508 W
10903.00	96.10	2.70	9327.63	1698.03	199.95	668282.03	807720.95	32	49	59.461 N	103	19	53.489 W
10935.00	96.10	3.00	9324.23	1729.81	201.53	668313.81	807722.53	32	49	59.775 N	103	19	53.467 W
10967.00	94.60	3.00	9321.24	1761.63	203.20	668345.63	807724.20	32	50	0.090 N	103	19	53.443 W
10999.00	94.60	3.40	9318.68	1793.48	204.98	668377.48	807725.98	32	50	0.405 N	103	19	53.419 W
11031.00	93.90	3.40	9316.30	1825.33	206.87	668409.33	807727.87	32	50	0.720 N	103	19	53.393 W
11055.00	93.50	3.40	9314.76	1849.24	208.29	668433.24	807729.29	32	50	0.956 N	103	19	53.374 W
11100.00	93.50	3.40	9312.01	1894.08	210.96	668478.08	807731.96	32	50	1.399 N	103	19	53.338 W