

District I
1625 N. French Dr., Hobbs, NM 88240
Phone: (575) 393-6161 Fax: (575) 393-0720
District II
811 S. First St., Artesia, NM 88210
Phone: (575) 748-1283 Fax: (575) 748-9720
District III
1000 Rio Brazos Road, Aztec, NM 87410
Phone: (505) 334-6178 Fax: (505) 334-6170
District IV
1220 S. St. Francis Dr., Santa Fe, NM 87505
Phone: (505) 476-3460 Fax: (505) 476-3462

State of New Mexico
Energy, Minerals & Natural Resources Department
OIL CONSERVATION DIVISION
1220 South St. Francis Dr.
Santa Fe, NM 87505

HOBBS OCD
DEC 26 2017
RECEIVED

Form C-102
Revised August 1, 2011
Submit one copy to appropriate
District Office

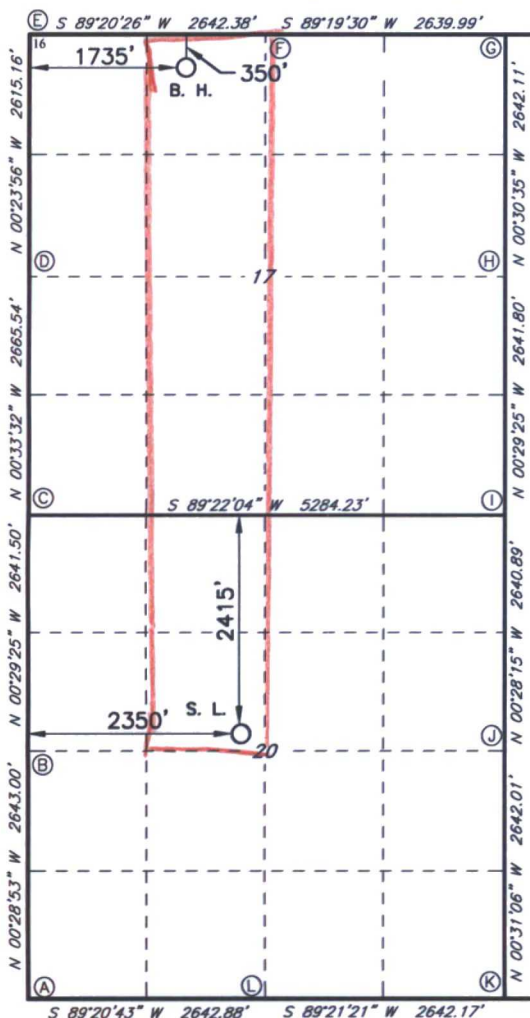
☒ AMENDED REPORT

WELL LOCATION AND ACREAGE DEDICATION PLAT

As Drilled

¹ API Number 30-025-43898		² Pool Code 96660		³ Pool Name Berry; Bone Spring, South	
⁴ Property Code 318351		⁵ Property Name BIRD DOG 20/17 B2FC STATE COM			⁶ Well Number 1H
⁷ OGRID NO. 14744		⁸ Operator Name MEWBOURNE OIL COMPANY			⁹ Elevation 3721'
¹⁰ Surface Location					
UL or lot no. F	Section 20	Township 21S	Range 34E	Lot Idn	Feet from the 2415
				North/South line NORTH	Feet From the 2350
				East/West line WEST	County LEA
¹¹ Bottom Hole Location If Different From Surface					
UL or lot no. C	Section 17	Township 21S	Range 34E	Lot Idn	Feet from the 337
				North/South line NORTH	Feet from the 1734'
				East/West line WEST	County LEA
¹² Dedicated Acres 240		¹³ Joint or Infill		¹⁴ Consolidation Code	
¹⁵ Order No.					

No allowable will be assigned to this completion until all interest have been consolidated or a non-standard unit has been approved by the division.



GEODETIC DATA
NAD 83 GRID - NM EAST

SURFACE LOCATION
N: 533903.0 - E: 800526.2

LAT: 32.4649580° N
LONG: 103.4929528° W

BOTTOM HOLE
N: 541241.0 - E: 799848.9

LAT: 32.4851413° N
LONG: 103.4949618° W

CORNER DATA
NAD 83 GRID - NM EAST

A: FOUND BRASS CAP "1918"
N: 531008.2 - E: 798200.9
B: FOUND BRASS CAP "1918"
N: 533650.6 - E: 798178.7
C: FOUND BRASS CAP "1918"
N: 536291.5 - E: 798156.1
D: FOUND 1/2" REBAR
N: 538956.4 - E: 798130.1
E: FOUND BRASS CAP "1918"
N: 541571.0 - E: 798111.9
F: FOUND BRASS CAP "1918"
N: 541601.4 - E: 800753.6
G: FOUND BRASS CAP "1918"
N: 541632.5 - E: 803392.9
H: FOUND BRASS CAP "1918"
N: 538991.0 - E: 803416.4
I: FOUND BRASS CAP "1918"
N: 536349.8 - E: 803439.0
J: FOUND BRASS CAP "1918"
N: 533709.5 - E: 803460.7
K: FOUND BRASS CAP "1918"
N: 531068.1 - E: 803484.6
L: FOUND BRASS CAP "1918"
N: 531038.4 - E: 800843.1

17 OPERATOR CERTIFICATION

I hereby certify that the information contained herein is true and complete to the best of my knowledge and belief, and that this organization either owns a working interest or unleased mineral interest in the land including the proposed bottom hole location or has a right to drill this well at this location pursuant to a contract with an owner of such a mineral or working interest, or to a voluntary pooling agreement or a compulsory pooling order heretofore entered by the division.

Signature: *Ruby Caballero* Date: *12/20/17*
Printed Name: *Ruby Caballero*

E-mail Address

18 SURVEYOR CERTIFICATION

I hereby certify that the well location shown on this plat was plotted from field notes of actual surveys made by me or under my supervision, and that the same is true and correct to the best of my belief.

6-19-2017

Date of Survey

Signature and Seal of Professional Surveyor

19680

Certificate Number



RRC - Job No.: LS1706379