

30-025-44007



EOG Resources, Inc.

OPHELIA 22 W CTB

D-22-26S-33E

1/4/2018

LEGEND

Valve Open

Valve Closed

Valve Sealed

Orifice Meter

Turbine/ Coriolis Meter

Oil

Gas

Water

FACILITY DIAGRAM

Shown: Major equipment, vessels, process piping, and valves

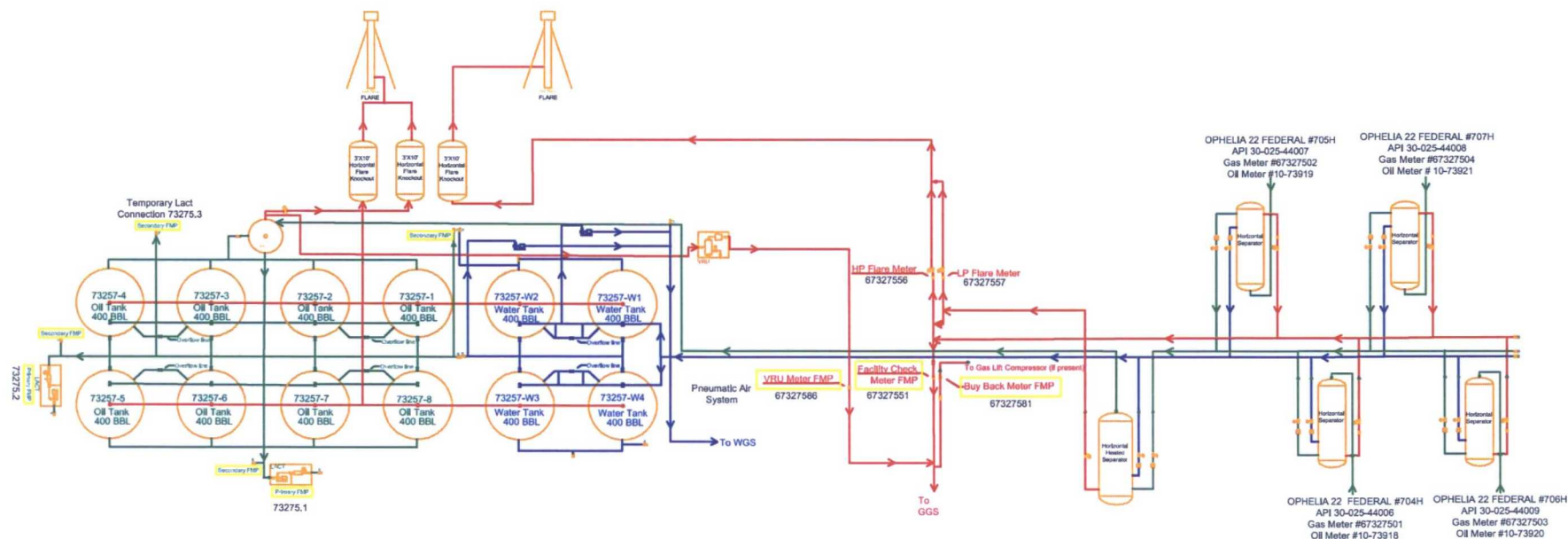
Not shown: Auxiliary process systems such as pneumatic air system, gas lift system, roll lines, recirculating lines vent lines, and small drain lines

PRODUCTION PHASE: All valves that provide access to production are effectively sealed in the closed position.

SALES THROUGH LACT UNITS: Sale is measured through LACT units. All other valves that provide access to production (load-out valves) are effectively sealed in the closed position.

WATER TANKS: If the possibility for oil to enter water tanks exists through common recirculating or equalizing lines, oil tanks are isolated from water tanks by valves effectively sealed in the closed position.

WELL SPECIFIC MEASUREMENT: The production from each well will flow into a dedicated 3-phase separator. The production stream will be separated into 3 independent streams (gas, oil, and water) by the separator and each stream will be measured individually after it exits the separator. The gas will be measured using a senior orifice meter and used to allocate total volume measured at the facility check meter, high pressure flare meter, and low pressure flare meter.



Facility Overview: Please see pages 2 and 3 for details.

