

DISTRICT I
1625 N. French Dr., Hobbs, NM 88240

DISTRICT II
811 South First, Artesia, NM 88210

DISTRICT III
1000 Rio Brazos Rd., Aztec, NM 87410

DISTRICT IV
2040 South Pacheco, Santa Fe, NM 87505

State of New Mexico
Energy, Minerals and Natural Resources Department

Form C--102
Revised August 1, 2011

Submit one copy to Appropriate
District Office

OIL CONSERVATION DIVISION

1220 South St. Francis Dr.
Santa Fe, New Mexico 87505

Permit #244690

AMENDED REPORT

New Pool Name/Code

WELL LOCATION AND ACREAGE DEDICATION PLAT

API Number 30-025-44377	Pool Code 98098	Pool Name WC-025 G-09 S248532M, WOLFPHONE
Property Code 317499	Property Name ANGUS STATE 24-35 16	Well Number 452H
OGRID No. 162928	Operator Name ENERGEN RESOURCES CORPORATION	Elevation 3380'

Surface Location

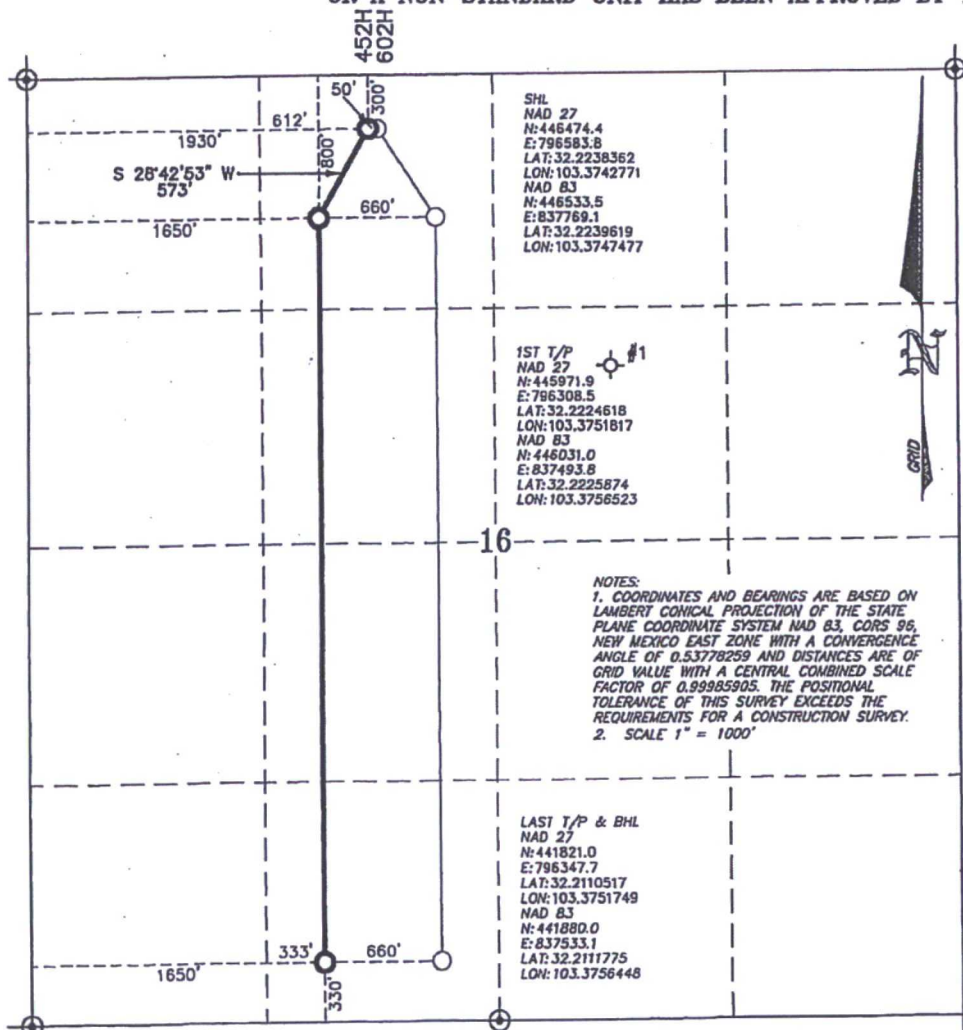
UL or lot No.	Section	Township	Range	Lot Idn	Feet from the	North/South line	Feet from the	East/West line	County
C	16	24-S	35-E		300	NORTH	1930	WEST	LEA

Bottom Hole Location If Different From Surface

UL or lot No.	Section	Township	Range	Lot Idn	Feet from the	North/South line	Feet from the	East/West line	County
N	16	24-S	35-E		330	SOUTH	1650	WEST	LEA

Dedicated Acres	Joint or Infill	Consolidation Code	Order No.
160			

NO ALLOWABLE WILL BE ASSIGNED TO THIS COMPLETION UNTIL ALL INTERESTS HAVE BEEN CONSOLIDATED
OR A NON-STANDARD UNIT HAS BEEN APPROVED BY THE DIVISION



OPERATOR CERTIFICATION

I hereby certify that the information contained herein is true and complete to the best of my knowledge and belief, and that this organization either owns a working interest or unleased mineral interest in the land including the proposed bottom hole location or has a right to drill this well at this location pursuant to a contract with an owner of such a mineral or working interest, or to a voluntary pooling agreement or compulsory pooling order heretofore entered by the division.

Brenda F. Rathjen 1/04/2018
Signature Date
Brenda F. Rathjen
Printed Name
1/04/2018
Date

SURVEYOR CERTIFICATION

I hereby certify that the well location shown on this plat was plotted from field notes of actual surveys made by me or under my supervision, and that the same is true and correct to the best of my knowledge and belief.

NOVEMBER 28, 2017
Date Surveyed
N: 3959
Signature & Seal of
Professional Surveyor
WILSON D. WATSON, JR.
JANUARY 4, 2018
Signature Date

Certificate No. WILSON D. WATSON JR.
P.L.S. #3959
WATSON PROFESSIONAL GROUP INC