

District I  
1625 N. French Dr., Hobbs, NM 88240  
Phone: (575) 393-6161 Fax: (575) 393-0720  
District II  
811 S. First St., Artesia, NM 88210  
Phone: (575) 748-1283 Fax: (575) 748-9720  
District III  
1000 Rio Brazos Road, Aztec, NM 87410  
Phone: (505) 334-6178 Fax: (505) 334-6170  
District IV  
1220 S. St. Francis Dr., Santa Fe, NM 87505  
Phone: (505) 476-3460 Fax: (505) 476-3462

State of New Mexico  
Energy, Minerals & Natural Resources  
Department  
OIL CONSERVATION DIVISION  
1220 South St. Francis Dr.  
Sante Fe, NM 87505

**HOBBS OCD**  
**MAR 27 2018**  
**RECEIVED**

FORM C-102  
Revised August 1, 2011  
Submit one copy to appropriate  
District Office

☐ AMENDED REPORT

**WELL LOCATION AND ACREAGE DEDICATION PLAT**

|   |  |   |  |  |                                   |
|---|--|---|--|--|-----------------------------------|
| <sup>1</sup> API Number<br>30-025-43820 |  | <sup>2</sup> Pool Code<br>98135                   |  | <sup>3</sup> Pool Name<br>WC-025 G-09 S243310P; Upper Wolfcamp |                                   |
| <sup>4</sup> Property Code<br>317668    |  | <sup>5</sup> Property Name<br>ARES 4 STATE        |  |  | <sup>6</sup> Well Number<br>#704H |
| <sup>7</sup> OGRID No.<br>7377          |  | <sup>8</sup> Operator Name<br>EOG RESOURCES, INC. |  |  | <sup>9</sup> Elevation<br>3586'   |

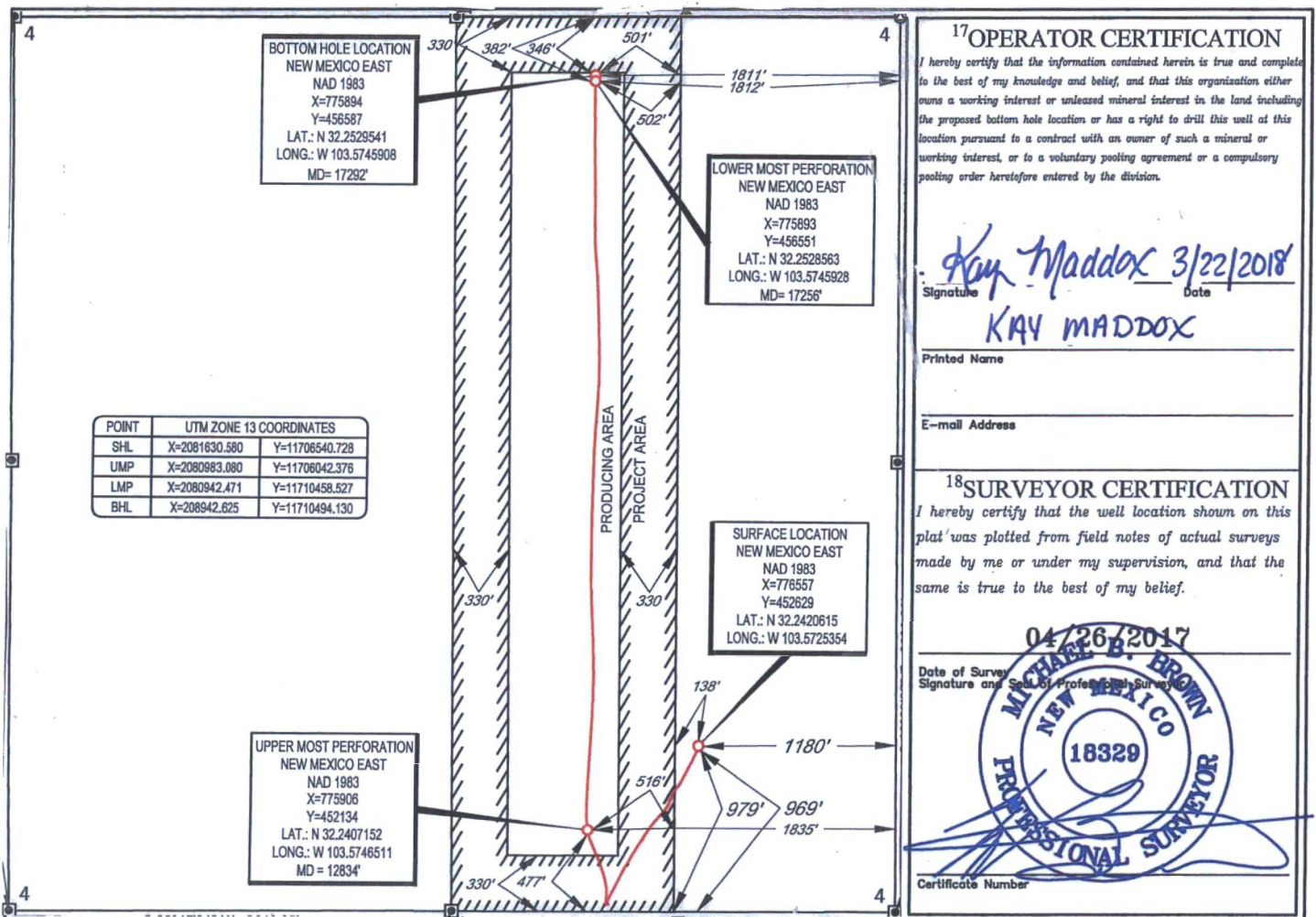
<sup>10</sup>Surface Location

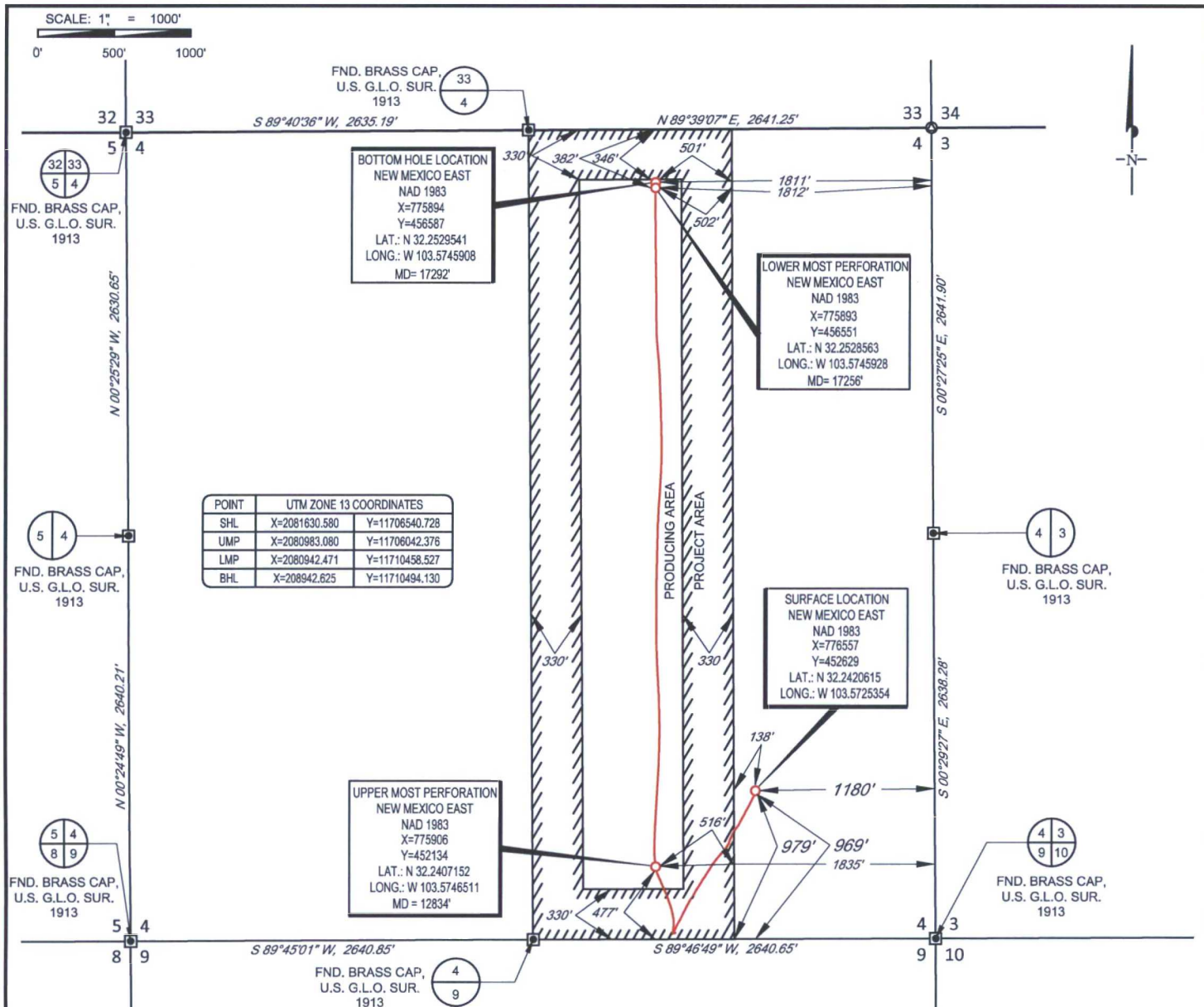
| UL or lot no. | Section | Township | Range | Lot Idn | Feet from the | North/South line | Feet from the | East/West line | County |
|---------------|---------|----------|-------|---------|---------------|------------------|---------------|----------------|--------|
| P             | 4       | 24-S     | 33-E  | -       | 969'          | SOUTH            | 1180'         | EAST           | LEA    |

| UL or lot no. | Section | Township | Range | Lot Idn | Feet from the | North/South line | Feet from the | East/West line | County |
|---------------|---------|----------|-------|---------|---------------|------------------|---------------|----------------|--------|
| B             | 4       | 24-S     | 33-E  | -       | 346'          | NORTH            | 1811'         | EAST           | LEA    |

|   |                               |                                  |                         |
|---|-------------------------------|----------------------------------|-------------------------|
| <sup>12</sup> Dedicated Acres<br>160.00 | <sup>13</sup> Joint or Infill | <sup>14</sup> Consolidation Code | <sup>15</sup> Order No. |
|---|-------------------------------|----------------------------------|-------------------------|

No allowable will be assigned to this completion until all interests have been consolidated or a non-standard unit has been approved by the division.





LEASE NAME & WELL NO.: ARES 4 STATE #704H  
 SECTION 4 TWP. 24-S RGE. 33-E SURVEY N.M.P.M.  
 COUNTY LEA STATE NM ELEVATION 3586'  
 DESCRIPTION 969' FSL & 1180' FEL



**TOPOGRAPHIC**  
LOYALTY INNOVATION LEGACY

1400 EVERMAN PARKWAY, Ste. 146 • FT. WORTH, TEXAS 76140  
 TELEPHONE: (817) 744-7512 • FAX (817) 744-7548  
 TEXAS FIRM REGISTRATION NO. 10042504  
 WWW.TOPOGRAPHIC.COM



Michael Blake Brown, P.S. No. 18329  
 MARCH 7, 2018



|   |           |  |
|---|-----------|--|
| ARES 4 STATE #704H<br>AS-COMPLETED<br><br>DATE: 03/06/2018<br>FILE: AD_ARES_4_STATE_704H<br>DRAWN BY: H.B.<br>SHEET: 1 OF 1 | REVISION: | NOTES:   |
|   |           | 1. ORIGINAL DOCUMENT SIZE: 8.5" X 11"  |
|   |           | 2. ALL BEARINGS, DISTANCES, AND COORDINATE VALUES CONTAINED HEREIN ARE GRID BASED UPON THE NEW MEXICO COORDINATE SYSTEM, EAST ZONE, U.S. SURVEY FEET, NORTH AMERICAN DATUM 1983.   |
|   |           | 3. THIS WELL LOCATION SHOWN HEREON HAS BEEN SURVEYED ON THE GROUND UNDER MY SUPERVISION AND PREPARED ACCORDING TO THE EVIDENCE FOUND AT THE TIME OF SURVEY, AND DATA PROVIDED BY EOG RESOURCES, INC. THIS CERTIFICATION IS MADE AND LIMITED TO THOSE PERSONS OR ENTITIES SHOWN ON THE FACE OF THIS PLAT AND IS NON-TRANSFERABLE. THIS SURVEY IS CERTIFIED FOR THIS TRANSACTION ONLY. |
|   |           |  |