

DISTRICT I
1825 N. FRENCH DR., HOBBS, NM 88240
Phone: (505) 303-0101 Fax: (505) 303-0720

DISTRICT II
811 S. FIRST ST., ARTESIA, NM 88210
Phone: (505) 748-1283 Fax: (505) 748-9720

DISTRICT III
1000 RIO BRAZOS RD., AZTEC, NM 87410
Phone: (505) 334-6178 Fax: (505) 334-6170

DISTRICT IV
1220 S. ST. FRANCIS DR., SANTA FE, NM 87505
Phone: (505) 478-5460 Fax: (505) 478-5462

State of New Mexico
Energy, Minerals & Natural Resources Department
HOBBY CONSERVATION DIVISION
1220 SOUTH ST. FRANCIS DR.
Santa Fe, New Mexico 87505

Form C-102
Revised August 1, 2011
Submit one copy to appropriate
District Office

RECEIVED

☐ AMENDED REPORT

WELL LOCATION AND ACREAGE DEDICATION PLAT

API Number 30-025-44636	Pool Code 97784	Pool Name WC-025 E-06 4253201N; 44636
Property Code 314183	Property Name EIDER FEDERAL	Well Number 204H
GRID No. 217955	Operator Name COG PRODUCTION, LLC	Elevation 3525.8'

Surface Location

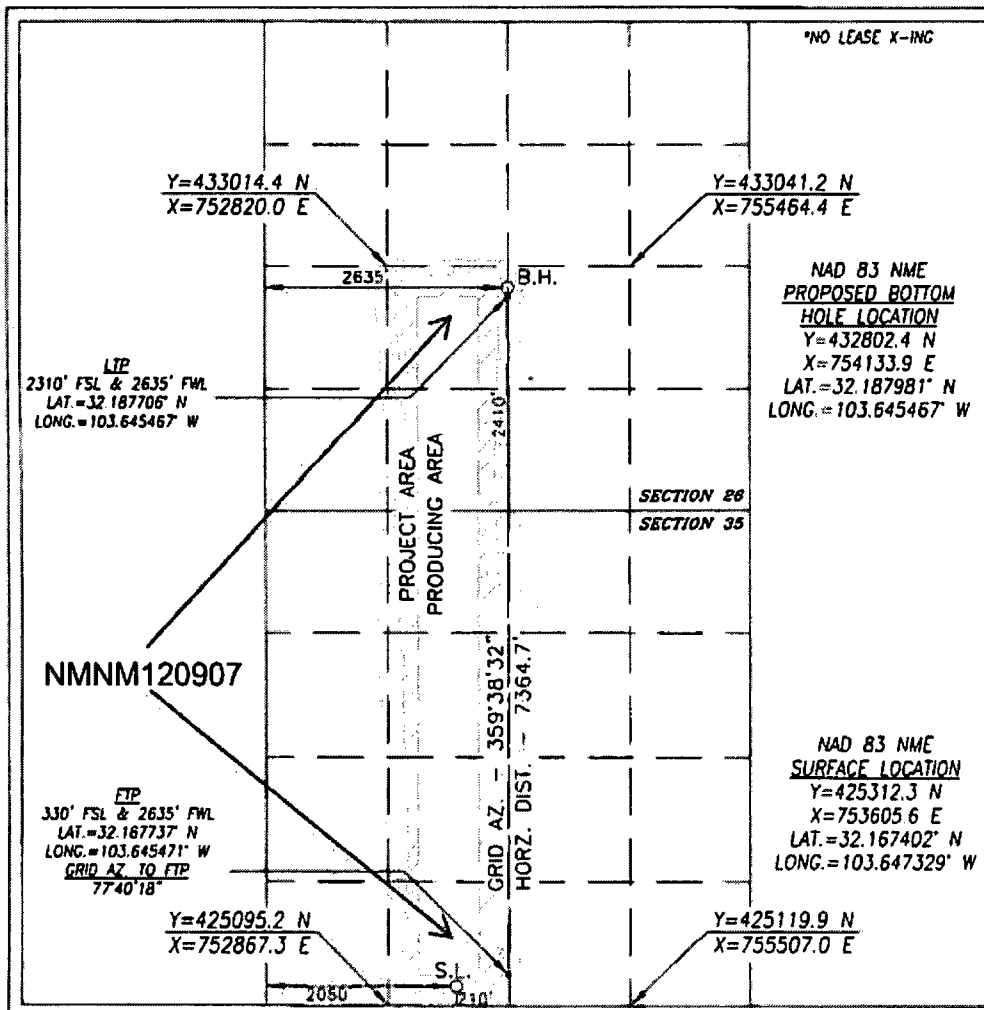
UL or lot No.	Section	Township	Range	Lot Idn	Feet from the	North/South line	Feet from the	East/West line	County
N	35	24-S	32-E		210	SOUTH	2060	WEST	LEA

Bottom Hole Location If Different From Surface

UL or lot No.	Section	Township	Range	Lot Idn	Feet from the	North/South line	Feet from the	East/West line	County
K	26	24-S	32-E		2410	SOUTH	2635	WEST	LEA

Dedicated Acres	Joint or Infill	Consolidation Code	Order No.
240			

NO ALLOWABLE WILL BE ASSIGNED TO THIS COMPLETION UNTIL ALL INTERESTS HAVE BEEN CONSOLIDATED OR A NON-STANDARD UNIT HAS BEEN APPROVED BY THE DIVISION



OPERATOR CERTIFICATION

I hereby certify that the information herein is true and complete to the best of my knowledge and belief, and that this organization either owns a working interest or unleased mineral interest in the land including the proposed bottom hole location or has a right to drill this well at this location pursuant to a contract with an owner of such mineral or working interest, or to a voluntary pooling agreement or a compulsory pooling order heretofore entered by the division.

Mayte Reyes 10/5/17
Signature Date

Mayte Reyes

Printed Name

mreyes1@concho.com

E-mail Address

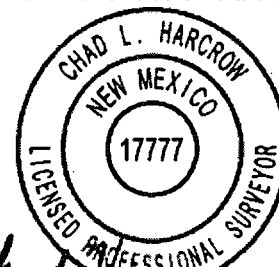
SURVEYOR CERTIFICATION

I hereby certify that the well location shown on this plat was plotted from field notes of actual surveys made by me or under my supervision, and that the same is true and correct to the best of my belief.

JUNE 22, 2017

Date of Survey

Signature & Seal of Professional Surveyor



Chad Harcrow 9/26/17
Certificate No. CHAD HARCROW 17777
W.O. # 17-1198 DRAWN BY: AI