

DISTRICT I
1625 N. French Dr., Hobbs, NM 88240
Phone: (575) 393-6161 Fax: (575) 393-0720

DISTRICT II
811 S. First St., Artesia, NM 88210
Phone: (575) 748-1283 Fax: (575) 748-9720

DISTRICT III
1000 Rio Brazos Road, Aztec, NM 87410
Phone: (505) 334-6178 Fax: (505) 334-6170

DISTRICT IV
1220 S. St. Francis Dr., Santa Fe, NM 87505
Phone: (505) 476-3460 Fax: (505) 476-3462

State of New Mexico
Energy, Minerals & Natural Resources Department
OIL CONSERVATION DIVISION
1220 South St. Francis Dr.
Santa Fe, New Mexico 87505

Form C-102
Revised August 1, 2011
Submit one copy to appropriate
District Office

AMENDED REPORT

WELL LOCATION AND ACREAGE DEDICATION PLAT

API Number 30-025- 44691	Pool Code 2209 1130	BELL LAKE; BONE SPRING NORTH ANTELOPE RIDGE; BONE SPRING WEST	
Property Code 316707	Property Name BELL LAKE UNIT NORTH		Well Number 301H
OGRID No. 12361	Operator Name KAISER-FRANCIS OIL COMPANY		Elevation 3518'

Surface Location

UL or lot No.	Section	Township	Range	Lot Idn	Feet from the	North/South line	Feet from the	East/West line	County
E	1	23-S	33-E		2120	NORTH	325	WEST	LEA

Bottom Hole Location If Different From Surface

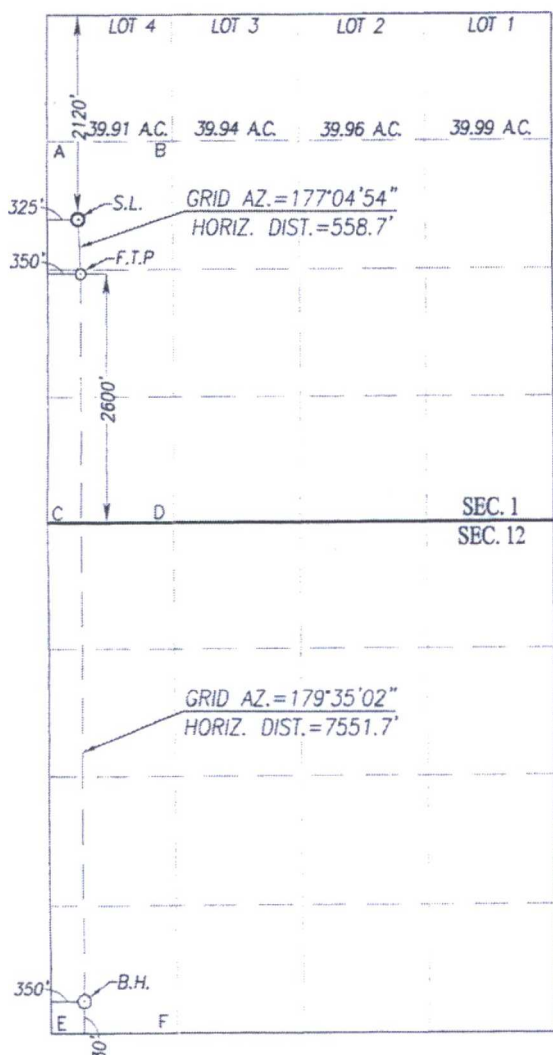
UL or lot No.	Section	Township	Range	Lot Idn	Feet from the	North/South line	Feet from the	East/West line	County
M	12	23-S	33-E		330	SOUTH	350	WEST	LEA

Dedicated Acres 240	Joint or Infill	Consolidation Code	Order No.
-------------------------------	-----------------	--------------------	-----------

HOBBS OCD

APR 17 2018

NO ALLOWABLE WILL BE ASSIGNED TO THIS COMPLETION UNTIL ALL INTERESTS HAVE BEEN CONSOLIDATED OR A NON-STANDARD UNIT HAS BEEN APPROVED BY THE DIVISION



SCALE: 1"=2000'

<p>GEODETIC COORDINATES NAD 83 NME SURFACE LOCATION Y= 486566.9 N X= 788355.0 E LAT.=32.335109° N LONG.=103.533561° W</p> <p>FIRST TAKE POINT NAD 83 NME Y= 486009.0 N X= 788383.4 E LAT.=32.333575° N LONG.=103.533482° W</p>	<p>GEODETIC COORDINATES NAD 27 NME SURFACE LOCATION Y= 486506.9 N X= 747171.9 E LAT.=32.334985° N LONG.=103.533079° W</p> <p>FIRST TAKE POINT NAD 27 NME Y= 485949.0 N X= 747200.3 E LAT.=32.333451° N LONG.=103.533001° W</p>
--	--

CORNER COORDINATES TABLE
NAD 27 NME

A - Y= 487308.1 N, X= 746842.0 E
B - Y= 487313.9 N, X= 748162.8 E
C - Y= 483348.0 N, X= 746866.4 E
D - Y= 483354.2 N, X= 748188.1 E
E - Y= 478067.4 N, X= 746907.6 E
F - Y= 478074.3 N, X= 748228.8 E

CORNER COORDINATES TABLE
NAD 83 NME

A - Y= 487368.1 N, X= 788025.1 E
B - Y= 487373.9 N, X= 789345.9 E
C - Y= 483407.9 N, X= 788049.6 E
D - Y= 483414.1 N, X= 789371.3 E
E - Y= 478127.1 N, X= 788090.9 E
F - Y= 478134.0 N, X= 789412.2 E

BOTTOM HOLE LOCATION
NAD 83 NME

Y= 478458.9 N
X= 788438.2 E
LAT.=32.312822° N
LONG.=103.533487° W

BOTTOM HOLE LOCATION
NAD 27 NME

Y= 478399.2 N
X= 747254.9 E
LAT.=32.312698° N
LONG.=103.533006° W

RECEIVED

OPERATOR CERTIFICATION

I hereby certify that the information herein is true and complete to the best of my knowledge and belief, and that this organization either owns a working interest or unleased mineral interest in the land including the proposed bottom hole location or has a right to drill this well at this location pursuant to a contract with an owner of such mineral or working interest, or to a voluntary pooling agreement or a compulsory pooling order heretofore entered by the division.

Melanie J. Wilson 11/01/2017
Signature Date

Melanie J Wilson

Printed Name

mjp1692@gmail.com

E-mail Address

SURVEYOR CERTIFICATION

I hereby certify that the well location shown on this plat was plotted from field notes of actual surveys made by me or under my supervision, and that the same is true and correct to the best of my belief.

OCTOBER 3, 2017

Date of Survey

Signature & Seal of Professional Surveyor:

Ronald J. Eidson 10/10/2017
Certificate Number Gary G. Eidson 12641
Ronald J. Eidson 3239

ACK

JWSC W.O.: 17.11.0952