

District I  
1625 N. French Dr., Hobbs, NM 88240  
Phone: (575) 393-6161 Fax: (575) 393-0720  
District II  
511 S. First St., Artesia, NM 88210  
Phone: (575) 748-1283 Fax: (575) 748-9720  
District III  
1000 Rio Brazos Road, Aztec, NM 87410  
Phone: (505) 334-6175 Fax: (505) 334-6170  
District IX  
1220 S. St. Francis Dr., Santa Fe, NM 87505  
Phone: (505) 476-3460 Fax: (505) 476-3462

State of New Mexico  
Energy, Minerals & Natural Resources Department  
**OIL CONSERVATION DIVISION**  
1220 South St. Francis Dr.  
Santa Fe, NM 87505

Form C-102  
Revised August 1, 2011  
Submit one copy to appropriate  
District Office

☐ AMENDED REPORT

**WELL LOCATION AND ACREAGE DEDICATION PLAT**

<sup>1</sup> API Number <b>30-025-44995</b>		<sup>2</sup> Pool Code <b>97900</b>	<sup>3</sup> Pool Name <b>RED HILLS; UPPER BONE SPRING SHALE</b>
<sup>4</sup> Property Code <b>30884 322149</b>	<sup>5</sup> Property Name <b>FLAGLER 8 FEDERAL</b>		<sup>6</sup> Well Number <b>28H</b>
<sup>7</sup> OGRID No. <b>6137</b>	<sup>8</sup> Operator Name <b>DEVON ENERGY PRODUCTION COMPANY, L.P.</b>		<sup>9</sup> Elevation <b>3430.1</b>

<sup>10</sup> Surface Location

UL or lot no.	Section	Township	Range	Lot Idn	Feet from the	North/South line	Feet from the	East/West line	County
<b>P</b>	<b>8</b>	<b>25 S</b>	<b>33 E</b>		<b>380</b>	<b>SOUTH</b>	<b>580</b>	<b>EAST</b>	<b>LEA</b>

<sup>11</sup> Bottom Hole Location If Different From Surface

UL or lot no.	Section	Township	Range	Lot Idn	Feet from the	North/South line	Feet from the	East/West line	County
<b>A</b>	<b>8</b>	<b>25 S</b>	<b>33 E</b>		<b>330</b>	<b>NORTH</b>	<b>775</b>	<b>EAST</b>	<b>LEA</b>

<sup>12</sup> Dedicated Acres	<sup>13</sup> Joint or Infill	<sup>14</sup> Consolidation Code	<sup>15</sup> Order No.
<b>160</b>			

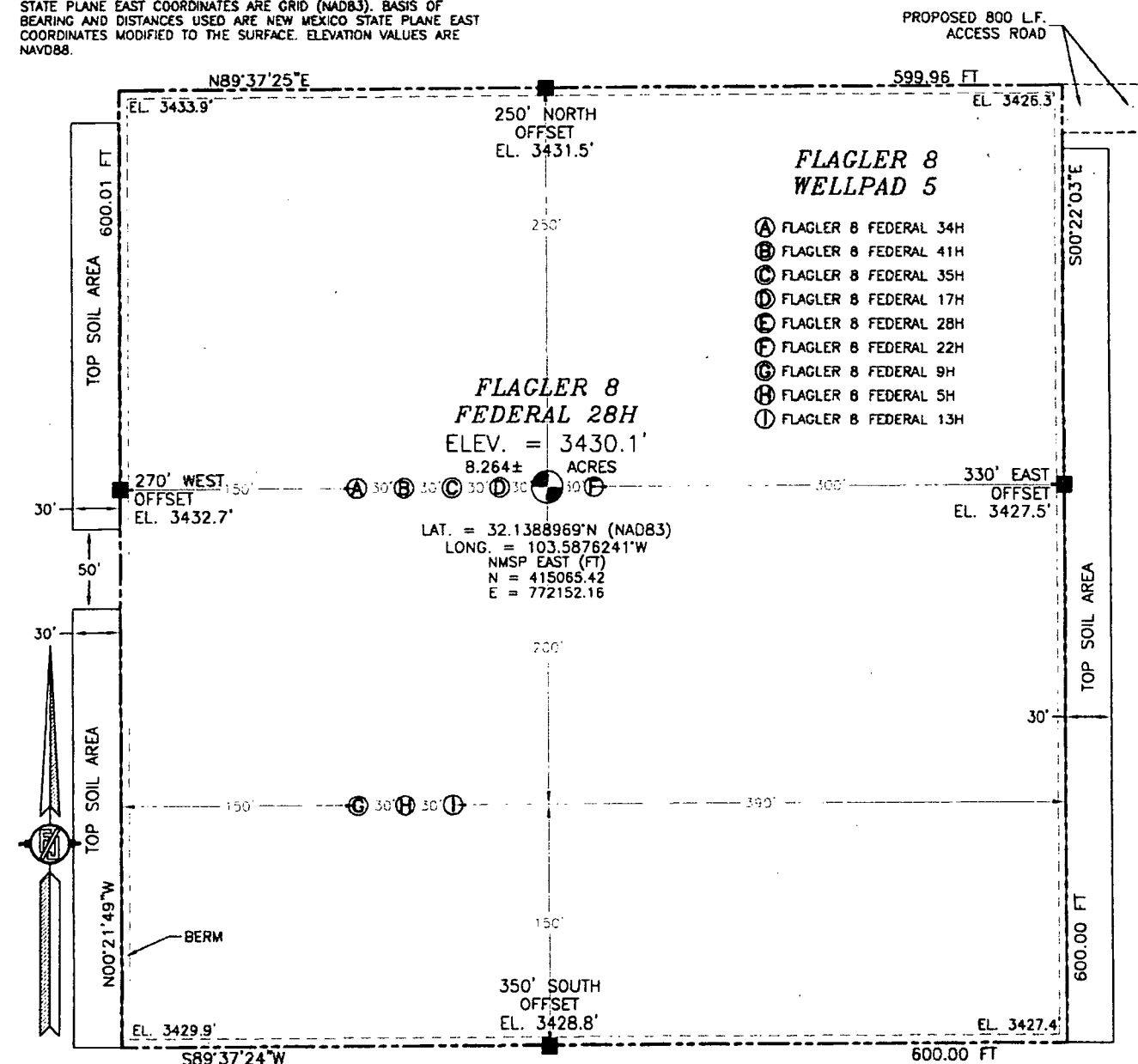
No allowable will be assigned to this completion until all interests have been consolidated or a non-standard unit has been approved by the division.

<p>N89°39'28"E 2646.90 FT</p> <p>N/4 CORNER SEC. 8 LAT. = 32.1523717°N LONG. = 103.6028369°W</p> <p>NMSP EAST (FT) N = 419935.12 E = 767410.07</p> <p>W/4 CORNER SEC. 8 LAT. = 32.1451155°N LONG. = 103.6028369°W</p> <p>NMSP EAST (FT) N = 417295.40 E = 767427.98</p> <p>SW CORNER SEC. 8 LAT. = 32.1378576°N LONG. = 103.6028383°W</p> <p>NMSP EAST (FT) N = 414655.05 E = 767445.46</p> <p>S89°37'55"W 2646.65 FT</p>		<p>N89°33'52"E 2647.55 FT</p> <p>BOTTOM OF HOLE</p> <p>330' 775'</p> <p>NE CORNER SEC. 8 LAT. = 32.1523705°N LONG. = 103.5857333°W</p> <p>NMSP EAST (FT) N = 419971.05 E = 772703.39</p> <p>E/4 CORNER SEC. 8 LAT. = 32.1451079°N LONG. = 103.5857466°W</p> <p>NMSP EAST (FT) N = 417328.96 E = 772717.63</p> <p>SE CORNER SEC. 8 LAT. = 32.1378519°N LONG. = 103.5857514°W</p> <p>NMSP EAST (FT) N = 414689.28 E = 772734.46</p> <p>S00°21'55"E 2640.23 FT</p>		<p><b>" OPERATOR CERTIFICATION</b></p> <p>I hereby certify that the information contained herein is true and complete to the best of my knowledge and belief, and that this organization either owns a working interest or unshared mineral interest in the land including the proposed bottom hole location or has a right to drill this well at this location pursuant to a contract with an owner of such a mineral or working interest, or to a voluntary pooling agreement or a compulsory pooling order heretofore entered by the division.</p> <p><i>Rebecca Deal</i> <b>3/20/2018</b> Signature Date</p> <p><b>Rebecca Deal, Regulatory Analyst</b> Printed Name</p> <p><b>rebecca.deal@dvn.com</b> E-mail Address</p>
<p>NOTE: LATITUDE AND LONGITUDE COORDINATES ARE SHOWN USING THE NORTH AMERICAN DATUM OF 1983 (NAD83). LISTED NEW MEXICO STATE PLANE EAST COORDINATES ARE GRID (NAD83). BASIS OF BEARING AND DISTANCES USED ARE NEW MEXICO STATE PLANE EAST COORDINATES MODIFIED TO THE SURFACE. ELEVATION VALUES ARE NAVD83.</p> <p><b>FLAGLER 8 FEDERAL 28H</b> ELEV. = 3430.1' LAT. = 32.1388969°N (NAD83) LONG. = 103.587624°W NMSP EAST (FT) N = 415065.42 E = 772152.16</p> <p>SURFACE LOCATION</p> <p>380' 580'</p> <p>S00°22'46"W 2640.90 FT</p>		<p><b>" SURVEYOR CERTIFICATION</b></p> <p>I hereby certify that the well location shown on this plat was plotted from field notes of actual surveys made by me or under my supervision, and that the same is true and correct to the best of my belief.</p> <p><b>FILMON F. JARAMILLO</b> JANUARY 22 2018 Date of Survey</p> <p><i>Filmon F. Jaramillo</i> Signature and Seal of Professional Surveyor</p> <p>Certificate Number: <b>FILMON F. JARAMILLO, PLS 12797</b> SURVEY NO. 5835A</p>		

First Take Point: 330' FSL & 775' FEL, 8-25-33E

**SECTION 8, TOWNSHIP 25 SOUTH, RANGE 33 EAST, N.M.P.M.  
LEA COUNTY, STATE OF NEW MEXICO  
SITE MAP**

NOTE: LATITUDE AND LONGITUDE COORDINATES ARE SHOWN USING THE NORTH AMERICAN DATUM OF 1983 (NAD83). LISTED NEW MEXICO STATE PLANE EAST COORDINATES ARE GRID (NAD83). BASIS OF BEARING AND DISTANCES USED ARE NEW MEXICO STATE PLANE EAST COORDINATES MODIFIED TO THE SURFACE. ELEVATION VALUES ARE NAVD88.



010 50 100 200

SCALE 1" = 100'

**DIRECTIONS TO LOCATION**

FROM THE INTERSECTION OF HWY. 128 & DIAMOND ROAD, GO SOUTH ON DIAMOND ROAD APPROX. 2.4 MILES WHERE PAVEMENT ENDS & RANCH HOUSE, CONTINUE SOUTH APPROX. 0.5 MILE TO A "Y" INTERSECTION, GO SOUTH APPROX. 0.8 MILE TO A CATTLE GUARD, CONTINUE SOUTH APPROX. 1.1 MILE TO A "Y" INTERSECTION, GO SOUTHWEST ON LEASE ROAD APPROX 0.8 MILE TO A LEASE ROAD ON RIGHT (WEST), TURN WEST (RIGHT) GO 1.0 MILE TO GATE, GO THROUGH GATE, TURN SOUTH ON TRAIL ROAD GO SOUTH 670' TO A PROPOSED "T" INTERSECTION, CONTINUE SOUTH AND WEST 800' TO THE NORTHEAST PAD CORNER FOR THIS LOCATION.

**DEVON ENERGY PRODUCTION COMPANY, L.P.**

**FLAGLER 8 FEDERAL 28H**

**LOCATED 380 FT. FROM THE SOUTH LINE  
AND 580 FT. FROM THE EAST LINE OF  
SECTION 8, TOWNSHIP 25 SOUTH,  
RANGE 33 EAST, N.M.P.M.  
LEA COUNTY, STATE OF NEW MEXICO**

**JANUARY 27, 2018**

**SURVEY NO. 5835A**

**MADRON SURVEYING, INC.**

301 SOUTH CANAL  
(575) 734-3341

**CARLSBAD, NEW MEXICO**