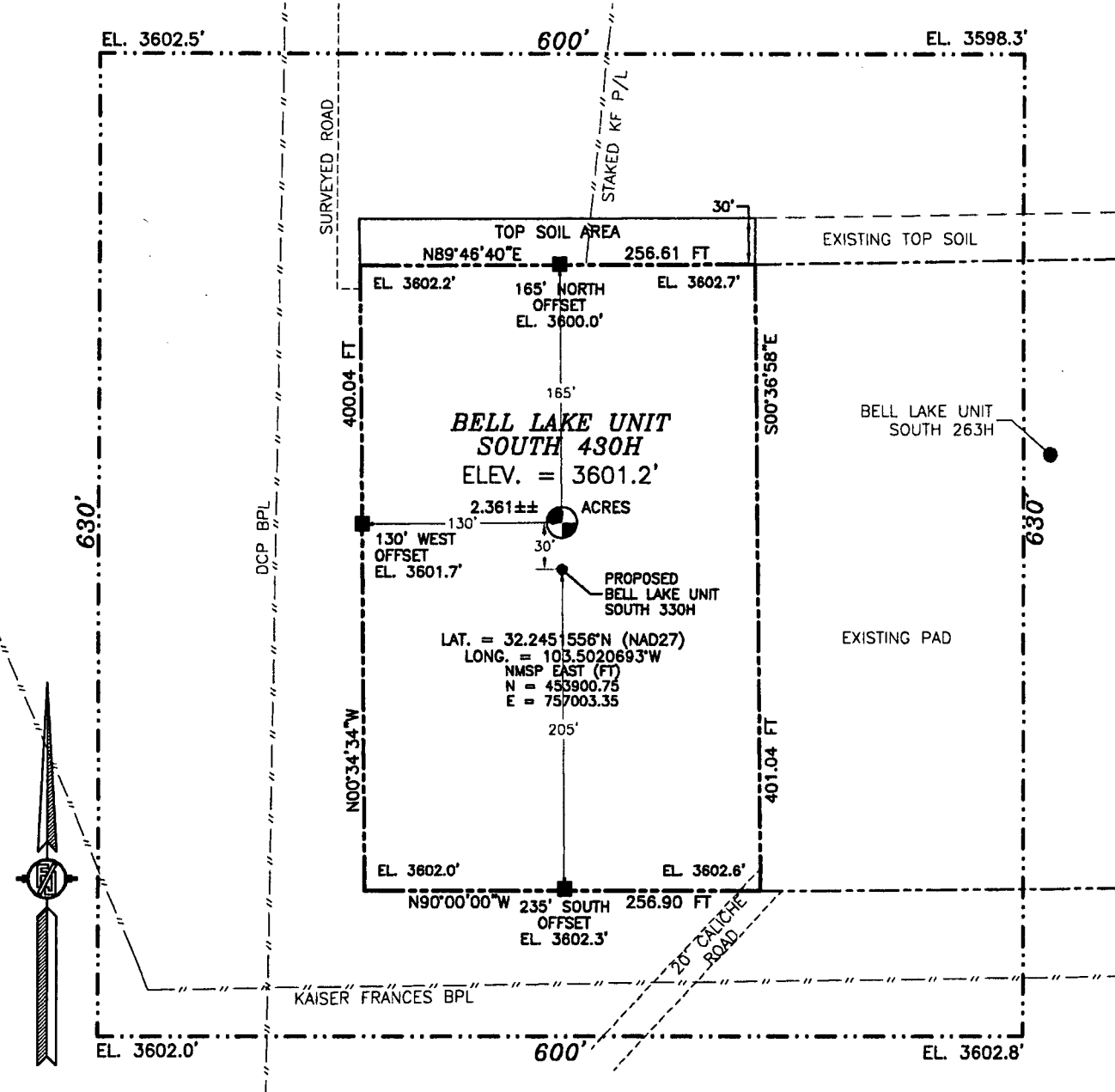


[illegible]

**SECTION 6, TOWNSHIP 24 SOUTH, RANGE 34 EAST, N.M.P.M.
LEA COUNTY, STATE OF NEW MEXICO
SITE MAP**



010 50 100 200

SCALE 1" = 100'
DIRECTIONS TO LOCATION

FROM THE INTERSECTION OF ST. HWY. 128 AND CO. RD. E21 (DELAWARE BASIN RD.), GO NORTH ON CO. RD. E21 APPROX. 2.6 MILES TO CO. RD. J1 (BELL LAKE RD.) TURN RIGHT ON LEASE ROAD AND GO EAST-SOUTHEAST APPROX. 0.55 MILE TO KAISER-FRANCES BELL LAKE UNIT SOUTH 26 WELLPAD, FROM THE NORTHEAST PAD CORNER GO NORTHEAST APPROX. 149' TO THE SOUTHWEST CORNER OF EXISTING PAD FOR THIS LOCATION.

**KAISER-FRANCIS OIL COMPANY
BELL LAKE UNIT SOUTH 430H
LOCATED 2160 FT. FROM THE SOUTH LINE
AND 620 FT. FROM THE EAST LINE OF
SECTION 6, TOWNSHIP 24 SOUTH,
RANGE 34 EAST, N.M.P.M.
LEA COUNTY, STATE OF NEW MEXICO**

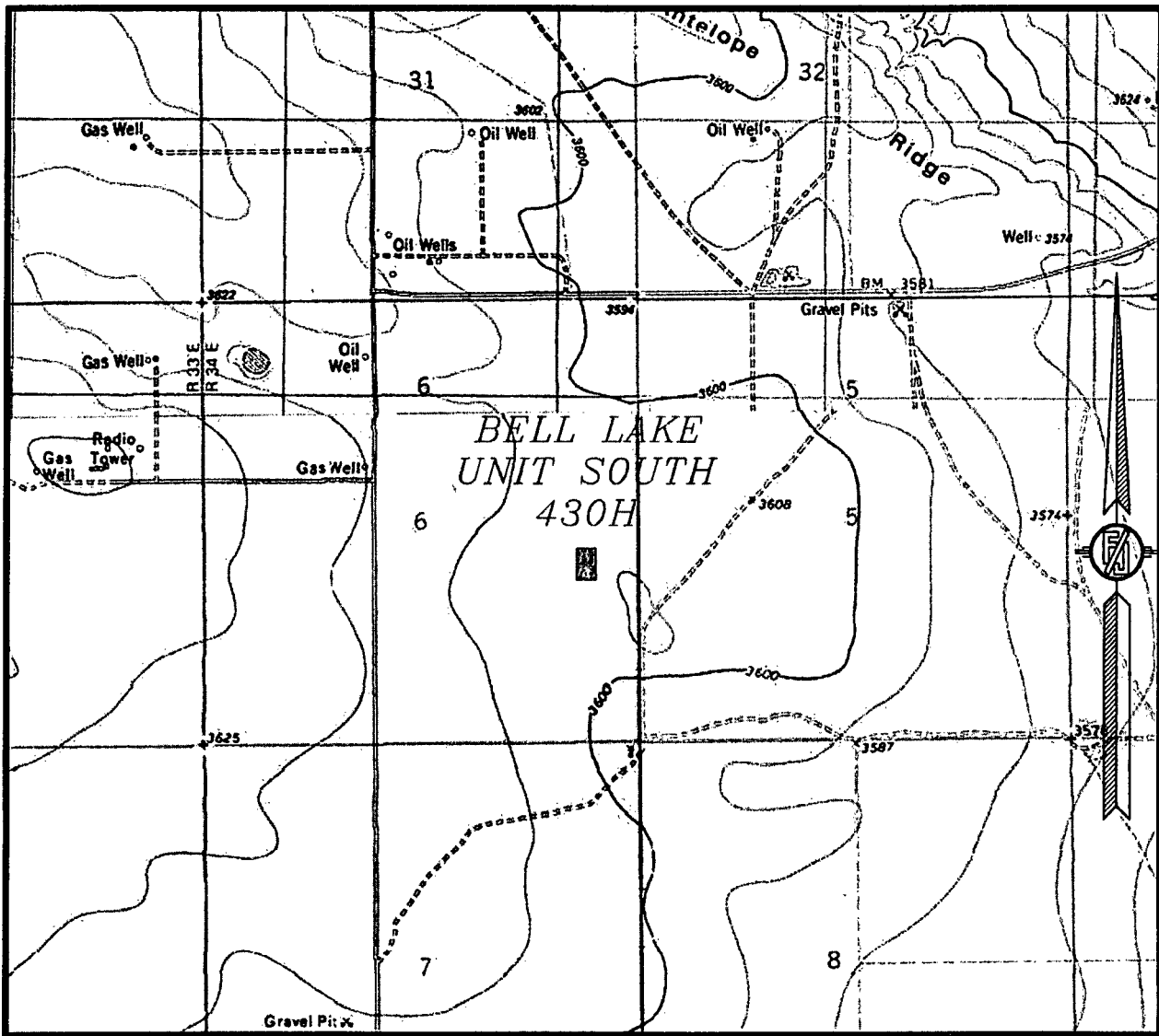
MARCH 7, 2018

SURVEY NO. 6067

MADRON SURVEYING, INC. 301 SOUTH CANAL (575) 234-3341

CARLSBAD, NEW MEXICO

SECTION 6, TOWNSHIP 24 SOUTH, RANGE 34 EAST, N.M.P.M.
LEA COUNTY, STATE OF NEW MEXICO
LOCATION VERIFICATION MAP



USGS QUAD MAP:
BELL LAKE
SAN SIMON SINK

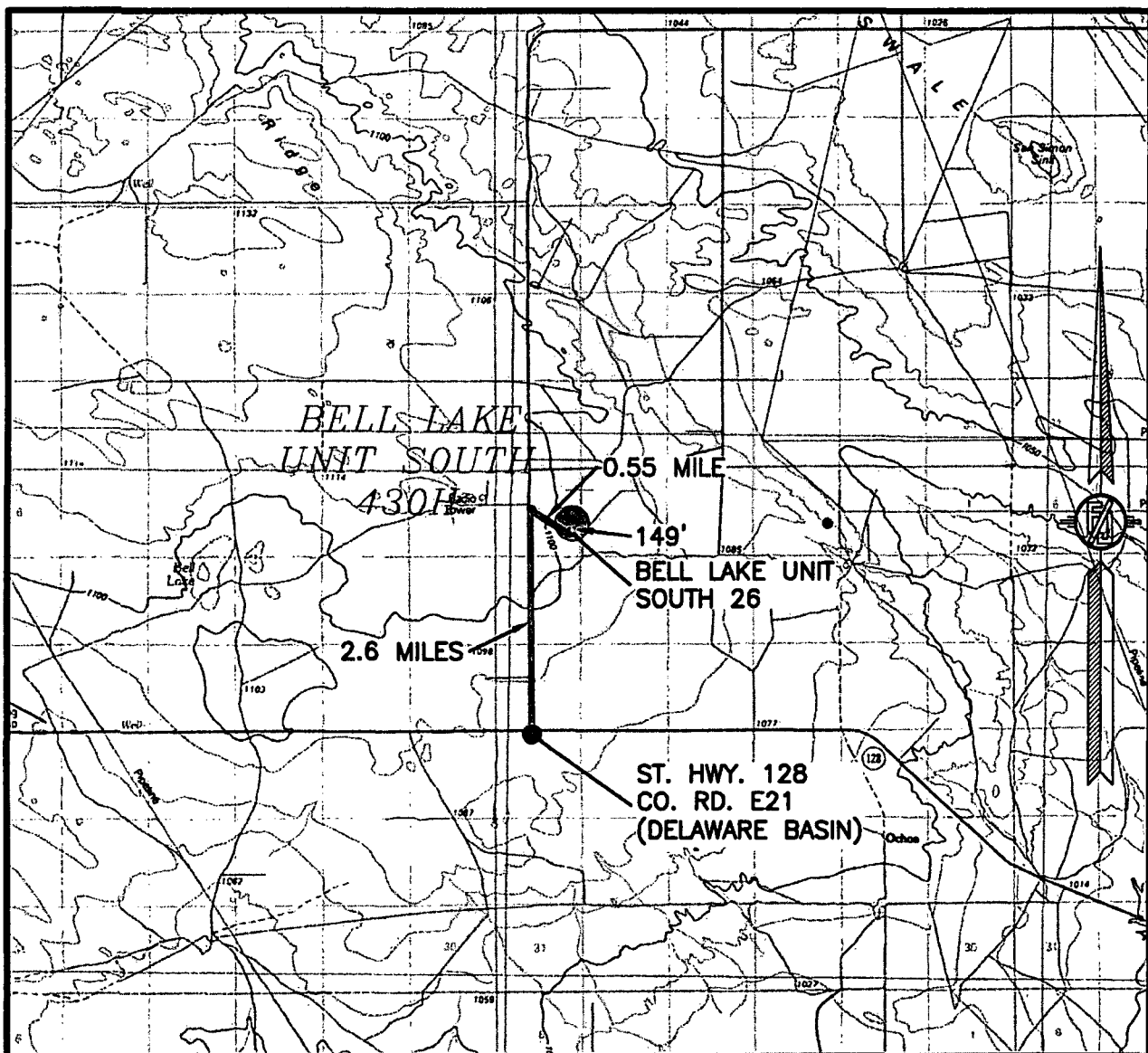
NOT TO SCALE

KAISER-FRANCIS OIL COMPANY
BELL LAKE UNIT SOUTH 430H
LOCATED 2160 FT. FROM THE SOUTH LINE
AND 620 FT. FROM THE EAST LINE OF
SECTION 6, TOWNSHIP 24 SOUTH,
RANGE 34 EAST, N.M.P.M.
LEA COUNTY, STATE OF NEW MEXICO

MARCH 7, 2018

MADRON SURVEYING, INC. 301 SOUTH CANAL (575) 234-3341 SURVEY NO. 6067
CARLSBAD, NEW MEXICO

SECTION 6, TOWNSHIP 24 SOUTH, RANGE 34 EAST, N.M.P.M.
LEA COUNTY, STATE OF NEW MEXICO
VICINITY MAP



DISTANCES IN MILES

NOT TO SCALE

DIRECTIONS TO LOCATION

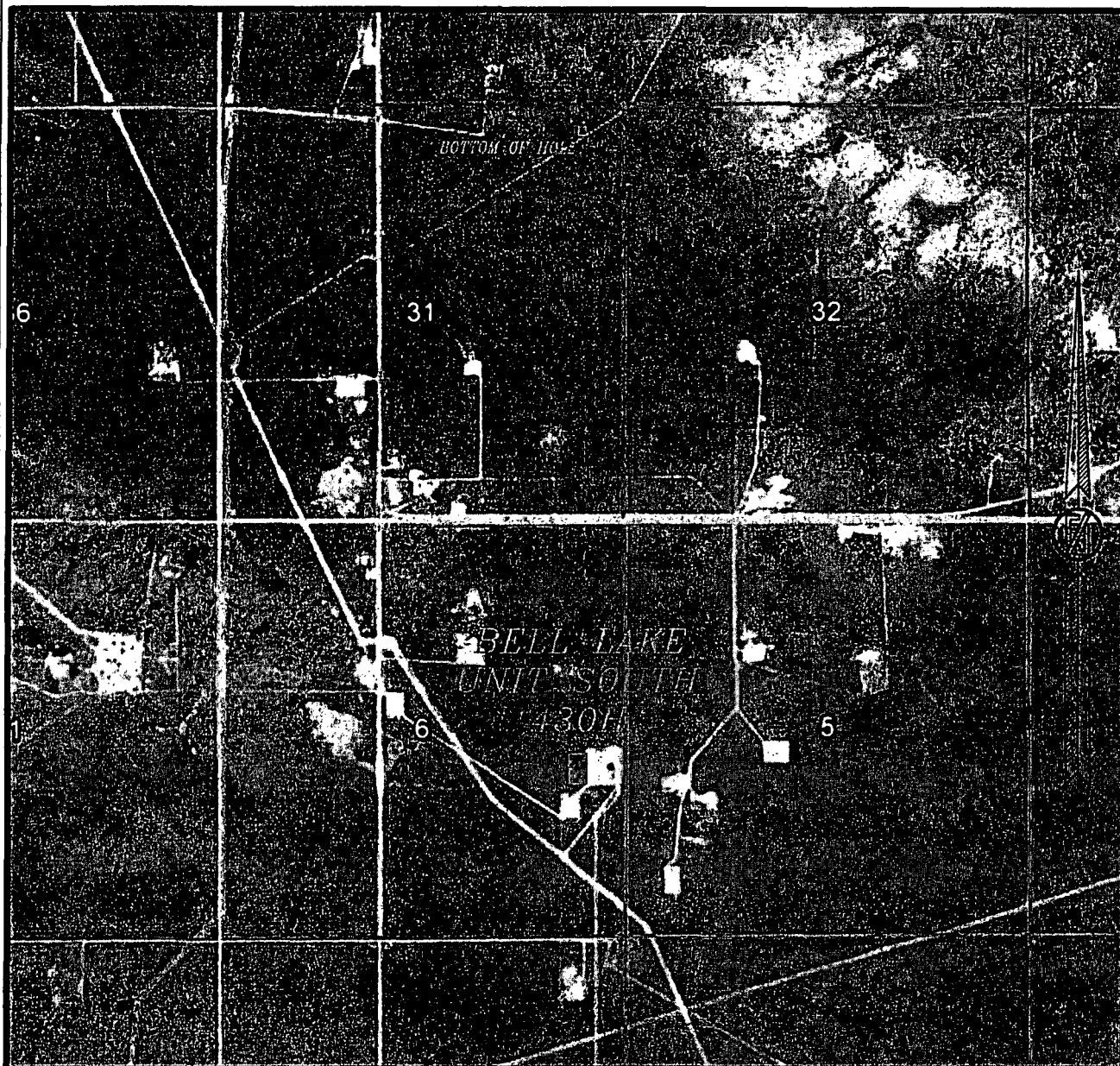
FROM THE INTERSECTION OF ST. HWY. 128 AND CO. RD. E21 (DELAWARE BASIN RD.), GO NORTH ON CO. RD. E21 APPROX. 2.6 MILES TO CO. RD. J1 (BELL LAKE RD.) TURN RIGHT ON LEASE ROAD AND GO EAST-SOUTHEAST APPROX. 0.55 MILE TO KAISER-FRANCES BELL LAKE UNIT SOUTH 26 WELLPAD, FROM THE NORTHEAST PAD CORNER GO NORTHEAST APPROX. 149' TO THE SOUTHWEST CORNER OF EXISTING PAD FOR THIS LOCATION.

**KAISER-FRANCIS OIL COMPANY
BELL LAKE UNIT SOUTH 430H**
LOCATED 2160 FT. FROM THE SOUTH LINE
AND 620 FT. FROM THE EAST LINE OF
SECTION 6, TOWNSHIP 24 SOUTH,
RANGE 34 EAST, N.M.P.M.
LEA COUNTY, STATE OF NEW MEXICO

MARCH 7, 2018

MADRON SURVEYING, INC. 301 SOUTH CANAL (575) 234-3341 SURVEY NO. 6067 CARLSBAD, NEW MEXICO

SECTION 6, TOWNSHIP 24 SOUTH, RANGE 34 EAST, N.M.P.M.
LEA COUNTY, STATE OF NEW MEXICO
AERIAL PHOTO



NOT TO SCALE
AERIAL PHOTO:
GOOGLE EARTH
NOV. 2017

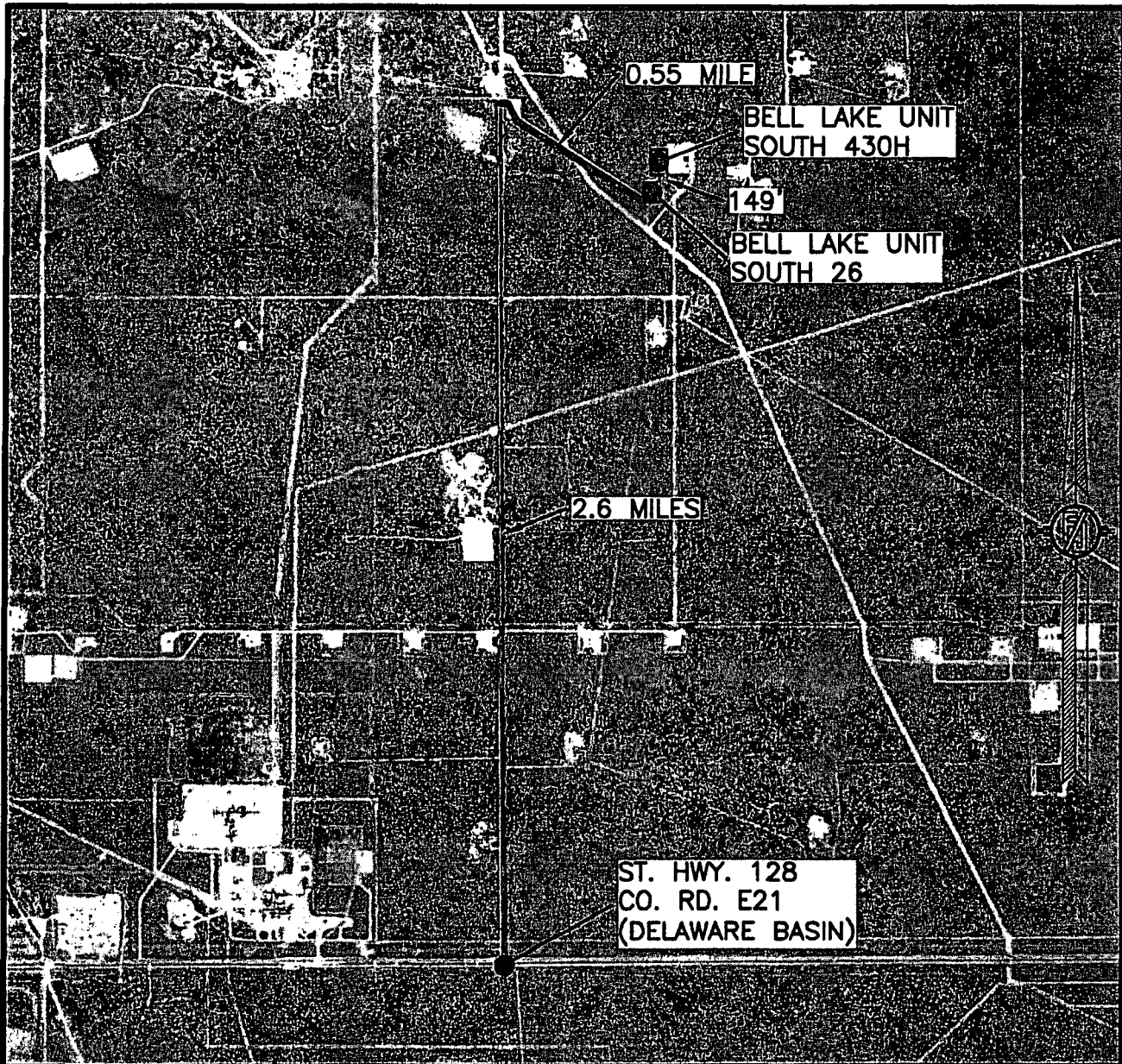
KAISER-FRANCIS OIL COMPANY
BELL LAKE UNIT SOUTH 430H
LOCATED 2160 FT. FROM THE SOUTH LINE
AND 620 FT. FROM THE EAST LINE OF
SECTION 6, TOWNSHIP 24 SOUTH,
RANGE 34 EAST, N.M.P.M.
LEA COUNTY, STATE OF NEW MEXICO

MARCH 7, 2018

SURVEY NO. 6067

MADRON SURVEYING, INC. 301 SOUTH CANAL (575) 234-3341 **CARLSBAD, NEW MEXICO**

SECTION 6, TOWNSHIP 24 SOUTH, RANGE 34 EAST, N.M.P.M.
LEA COUNTY, STATE OF NEW MEXICO
AERIAL ACCESS ROUTE MAP



NOT TO SCALE
AERIAL PHOTO:
GOOGLE EARTH
NOV. 2017

KAISER-FRANCIS OIL COMPANY
BELL LAKE UNIT SOUTH 430H
LOCATED 2160 FT. FROM THE SOUTH LINE
AND 620 FT. FROM THE EAST LINE OF
SECTION 6, TOWNSHIP 24 SOUTH,
RANGE 34 EAST, N.M.P.M.
LEA COUNTY, STATE OF NEW MEXICO

MARCH 7, 2018

SURVEY NO. 6067

MADRON SURVEYING, INC. 301 SOUTH CANAL (575) 234-3341 CARLSBAD, NEW MEXICO