

DISTRICT I
1685 N. FRENCH DR., HOBBS, NM 88240
Phone: (575) 598-0101 Fax: (575) 598-0780

DISTRICT II
811 S. FIRST ST., ARTESIA, NM 88210
Phone: (575) 748-1883 Fax: (575) 748-0780

DISTRICT III
1000 RIO BRAZOS RD., AZTEC, NM 87410
Phone: (505) 334-6178 Fax: (505) 334-6170

DISTRICT IV
1250 S. ST. FRANCIS DR., SANTA FE, NM 87505
Phone: (505) 476-3460 Fax: (505) 476-3462

State of New Mexico
Energy, Minerals & Natural Resources Department
OIL CONSERVATION DIVISION
1220 SOUTH ST. FRANCIS DR.
Santa Fe, New Mexico 87505
HOBBBS OGD
SEP 05 2018

Form C-102
Revised August 1, 2011
Submit one copy to appropriate
District Office

RECEIVED

☐ AMENDED REPORT

WELL LOCATION AND ACREAGE DEDICATION PLAT

API Number 30-025-49172	Pool Code 97922	Pool Name WC-025 G-06 S223421L;BONE SPRING
Property Code 30863	Property Name GAUCHO UNIT 29 WELLPAD 1	Well Number 89H
GRID No. 6137	Operator Name DEVON ENERGY PRODUCTION COMPANY, L.P.	Elevation 3430.4'

Surface Location

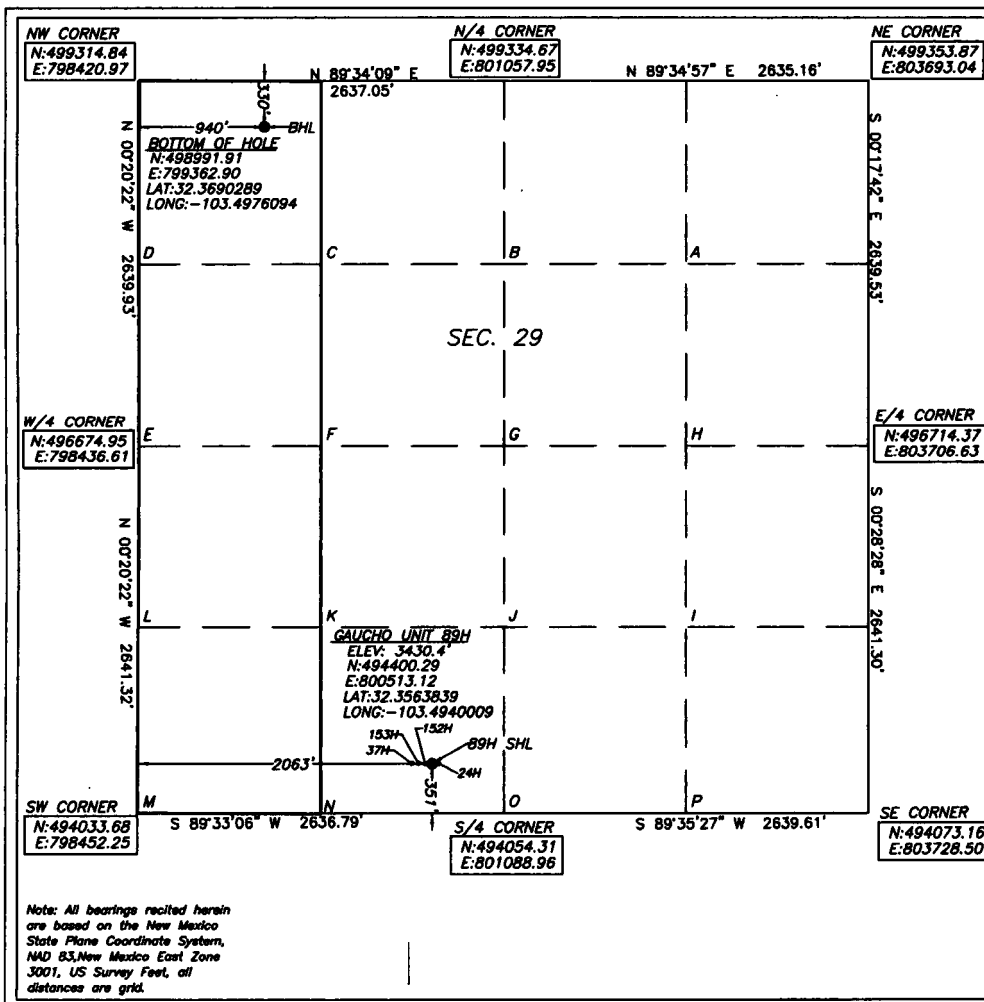
UL or lot No.	Section	Township	Range	Lot Idn	Feet from the	North/South line	Feet from the	East/West line	County
N	29	22-S	34-E		351	SOUTH	2063	WEST	LEA

Bottom Hole Location If Different From Surface

UL or lot No.	Section	Township	Range	Lot Idn	Feet from the	North/South line	Feet from the	East/West line	County
D	29	22-S	34-E		330	NORTH	940	WEST	LEA

Dedicated Acres	Joint or Infill	Consolidation Code	Order No.
160			

**NO ALLOWABLE WILL BE ASSIGNED TO THIS COMPLETION UNTIL ALL INTERESTS HAVE BEEN CONSOLIDATED
OR A NON-STANDARD UNIT HAS BEEN APPROVED BY THE DIVISION**



OPERATOR CERTIFICATION I hereby certify that the information herein is true and complete to the best of my knowledge and belief, and that this organization either owns a working interest or unleased mineral interest in the land including the proposed bottom hole location or has a right to drill this well at this location pursuant to a contract with an owner of such mineral or working interest, or to a voluntary pooling agreement or a compulsory pooling order heretofore entered by the division. <u>Rebecca Deal</u> 4/23/2018 Signature Date Rebecca Deal, Regulatory Analyst Printed Name rebecca.deal@dvn.com E-mail Address	
SURVEYOR CERTIFICATION I hereby certify that the well location shown on this plat was plotted from field notes of actual surveys made by me or under my supervision, and that the same is true and correct to the best of my belief. 02/2018 Date of Survey Signature & Seal of Professional Surveyor 03/01/18 Certificate No. 22404 B.L. LAMAN W.O. # DRAWN BY: CM	

5L First Take Point: 330' FSL & 940' FWL, 29-22S-34E
Last Take Point: 330' FNL & 940' FWL, 29-22S-34E