

DISTRICT I  
1625 N. French Dr., Hobbs, NM 88240  
Phone: (575) 393-6161 Fax: (575) 393-0720  
DISTRICT II  
811 S. First St., Artesia, NM 88210  
Phone: (575) 748-1283 Fax: (575) 748-9720  
DISTRICT III  
1000 Rio Brazos Road, Aztec, NM 87410  
Phone: (505) 334-6178 Fax: (505) 334-6170  
DISTRICT IV  
1220 S. St. Francis Dr., Santa Fe, NM 87505  
Phone: (505) 476-3460 Fax: (505) 476-3462

State of New Mexico  
Energy, Minerals & Natural Resources Department

OIL CONSERVATION DIVISION

1220 South St. Francis Dr.  
Santa Fe, New Mexico 87505

HOBBS OCD  
JAN 16 2019  
RECEIVED

Form C-102

Revised August 1, 2011

Submit one copy to appropriate  
District Office

AMENDED REPORT

WELL LOCATION AND ACREAGE DEDICATION PLAT

API Number <b>30-025- 45522</b>	Pool Code <b>2220 98266</b>	Property Name <b>BELL LAKE UNIT SOUTH</b>	Well Number <b>402H</b>
Property Code <b>316706</b>	Operator Name <b>KAISER-FRANCIS OIL COMPANY</b>		Elevation <b>3632'</b>
OGRID No. <b>12361</b>			

Surface Location

UL or lot No.	Section	Township	Range	Lot Idn	Feet from the	North/South line	Feet from the	East/West line	County
E	1	24-S	33-E		2030	NORTH	295	WEST	LEA

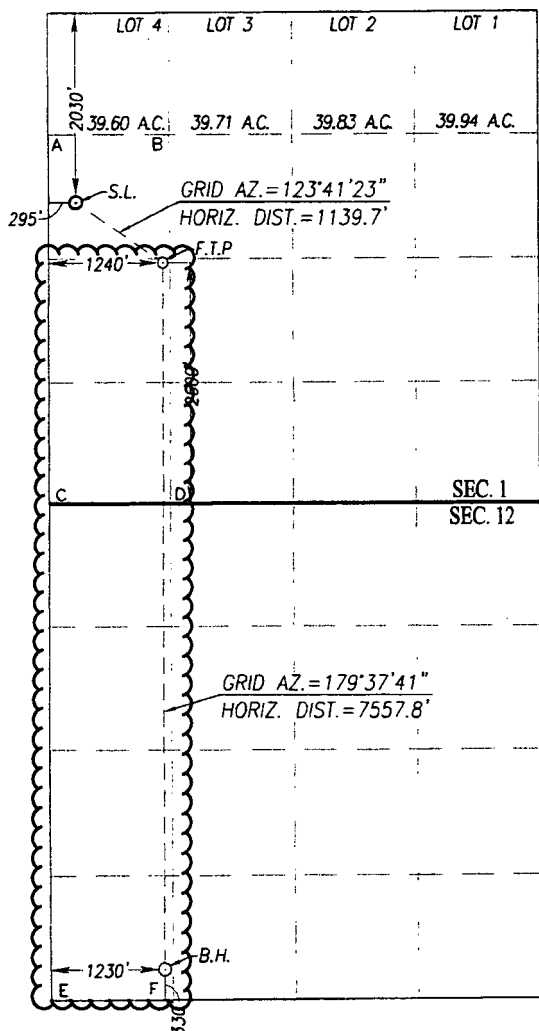
Bottom Hole Location If Different From Surface

UL or lot No.	Section	Township	Range	Lot Idn	Feet from the	North/South line	Feet from the	East/West line	County
M	12	24-S	33-E		330	SOUTH	1230	WEST	LEA

Dedicated Acres <b>240</b>	Joint or Infill	Consolidation Code	Order No.
-------------------------------	-----------------	--------------------	-----------

NO ALLOWABLE WILL BE ASSIGNED TO THIS COMPLETION UNTIL ALL INTERESTS HAVE BEEN CONSOLIDATED OR A NON-STANDARD UNIT HAS BEEN APPROVED BY THE DIVISION

SCALE: 1"=2000'



<b>SURFACE LOCATION</b> NAD 83 NME Y = 454978.6 N X = 788561.1 E LAT. = 32.248281° N LONG. = 103.533656° W	<b>SURFACE LOCATION</b> NAD 27 NME Y = 454919.6 N X = 747377.2 E LAT. = 32.248157° N LONG. = 103.533177° W
<b>FIRST TAKE POINT</b> NAD 83 NME Y = 454346.6 N X = 789509.2 E LAT. = 32.246524° N LONG. = 103.530604° W	<b>FIRST TAKE POINT</b> NAD 27 NME Y = 454287.6 N X = 748325.3 E LAT. = 32.246400° N LONG. = 103.530126° W

CORNER COORDINATES TABLE

NAD 27 NME

A - Y = 455642.8 N, X = 747078.6 E
B - Y = 455647.2 N, X = 748398.9 E
C - Y = 451683.5 N, X = 747099.7 E
D - Y = 451688.5 N, X = 748422.0 E
E - Y = 446395.1 N, X = 747147.2 E
F - Y = 446402.2 N, X = 748468.3 E

CORNER COORDINATES TABLE

NAD 83 NME

A - Y = 455701.8 N, X = 788262.4 E
B - Y = 455706.3 N, X = 789582.7 E
C - Y = 451742.4 N, X = 788283.7 E
D - Y = 451747.4 N, X = 789606.0 E
E - Y = 446453.9 N, X = 788331.4 E
F - Y = 446460.9 N, X = 789652.6 E

<b>BOTTOM HOLE LOCATION</b> NAD 83 NME Y = 446790.4 N X = 789558.2 E LAT. = 32.225754° N LONG. = 103.530629° W	<b>BOTTOM HOLE LOCATION</b> NAD 27 NME Y = 446731.6 N X = 748374.0 E LAT. = 32.225630° N LONG. = 103.530151° W
---	---

OPERATOR CERTIFICATION

I hereby certify that the information herein is true and complete to the best of my knowledge and belief, and that this organization either owns a working interest or unleased mineral interest in the land including the proposed bottom hole location or has a right to drill this well at this location pursuant to a contract with an owner of such mineral or working interest, or to a voluntary pooling agreement or a compulsory pooling order heretofore entered by the division.

*Melanie J. Wilson* 01/11/2018  
Signature Date

**Melanie J Wilson**  
Printed Name

**mjp1692@gmail.com**  
E-mail Address

SURVEYOR CERTIFICATION

I hereby certify that the well location shown on this plat was plotted from field notes of actual surveys made by me or under my supervision, and that the same is true and correct to the best of my belief.

OCTOBER 3, 2017  
Date of Survey  
Signature & Seal of Professional Surveyor

**RONALD J. EIDSON**  
REGISTERED PROFESSIONAL SURVEYOR  
3239  
Certificate Number  
ACK JWSC W.O.: 17.11.0954