

District I
1625 N. French Dr., Hobbs, NM 88240
Phone: (575) 393-6161 Fax: (575) 393-0720
District II
811 S. First St., Artesia, NM 88210
Phone: (575) 748-1283 Fax: (575) 748-9720
District III
1000 Rio Brazos Road, Aztec, NM 87410
Phone: (505) 334-6178 Fax: (505) 334-6170
District IV
1220 S. St. Francis Dr., Santa Fe, NM 87505
Phone: (505) 476-3460 Fax: (505) 476-3462

HOBBS OCD

State of New Mexico
Energy, Minerals & Natural Resources Department

OIL CONSERVATION DIVISION

1220 South St. Francis Dr.
Santa Fe, NM 87505

Form C-102
Revised August 1, 2011
Submit one copy to appropriate
District Office

JAN 23 2019

RECEIVED

AMENDED REPORT

WELL LOCATION AND ACREAGE DEDICATION PLAT

¹ API Number 70-024-45598	² Pool Code 24250	³ Pool Name FEATHERSTONE, BS
⁴ Property Code 724871	⁵ Property Name MEDUSA 2635 STATE	
⁷ OGRID NO. 773013	⁸ Operator Name RIDGE RUNNER RESOURCES OPERATING, LLC.	⁶ Well Number 1H
		⁹ Elevation 3672'

¹⁰ Surface Location

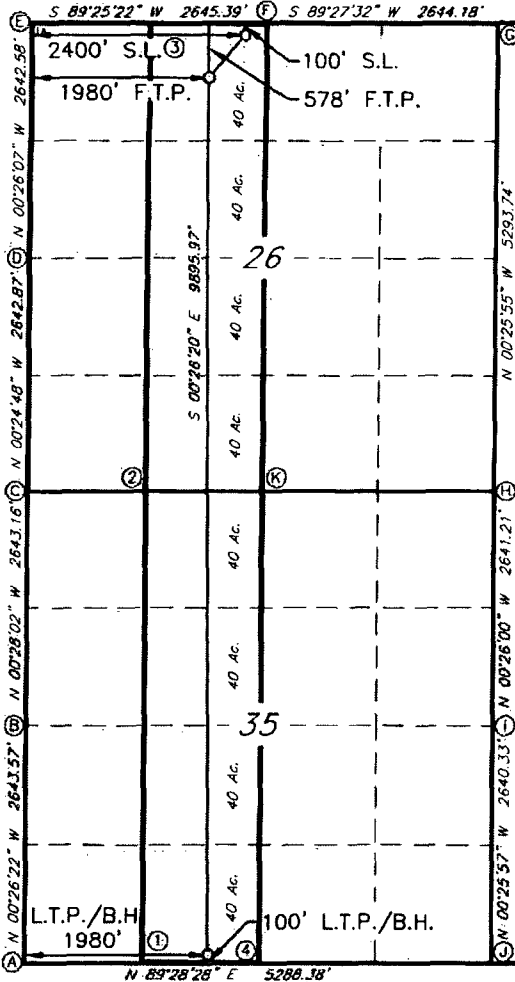
UL or lot no.	Section	Township	Range	Lot Idn	Feet from the	North/South line	Feet From the	East/West line	County
C	26	20	35		100	NORTH	2400	WEST	LEA

¹¹ Bottom Hole Location If Different From Surface

UL or lot no.	Section	Township	Range	Lot Idn	Feet from the	North/South line	Feet from the	East/West line	County
N	35	20	35		100	SOUTH	1980	WEST	LEA

¹² Dedicated Acres	¹³ Joint or Infill	¹⁴ Consolidation Code	¹⁵ Order No.

No allowable will be assigned to this completion until all interest have been consolidated or a non-standard unit has been approved by the division.



GEODETIC DATA
NAD 83 GRID - NM EAST
SURFACE LOCATION (S.L.)
N: 565420.4 - E: 820062.1
LAT: 32.5511430° N
LONG: 103.4287501° W
FIRST TAKE POINT (F.T.P.)
N: 564938.3 - E: 819645.8
LAT: 32.5498277° N
LONG: 103.4301143° W
**LAST TAKE POINT/
BOTTOM HOLE (L.T.P./B.H.)**
N: 555044.3 - E: 819721.6
LAT: 32.5226331° N
LONG: 103.4301405° W

CORNER DATA
NAD 83 GRID - NM EAST
A: FOUND Limestone 8"x2"x3"
N: 554926.2 - E: 817742.8
B: FOUND BRASS CAP "1912"
N: 557569.2 - E: 817722.5
C: FOUND BRASS CAP "1912"
N: 560211.9 - E: 817701.0
D: FOUND BRASS CAP "1912"
N: 562854.2 - E: 817681.9
E: FOUND BRASS CAP "1912"
N: 565496.3 - E: 817661.9
F: FOUND BRASS CAP "1912"
N: 565522.9 - E: 820306.6
G: FOUND 5/8" REBAR
N: 565547.9 - E: 822950.3
H: FOUND IRON ROD
N: 560255.2 - E: 822990.1
I: FOUND BRASS CAP
ILLEGIBLE
N: 557614.5 - E: 823010.1
J: FOUND BRASS CAP "1912"
N: 554974.7 - E: 823030.0
K: FOUND BRASS CAP
N: 560233.4 - E: 820346.7

CALCULATED POINTS
1: N: 554938.3 - E: 819064.6
2: N: 560222.6 - E: 819023.8
3: N: 565509.6 - E: 818984.2
4: N: 554950.5 - E: 820386.4

¹⁷ OPERATOR CERTIFICATION

I hereby certify that the information contained herein is true and complete to the best of my knowledge and belief, and that this organization either owns a working interest or unleased mineral interest in the land including the proposed bottom hole location or has a right to drill this well at this location pursuant to a contract with an owner of such a mineral or working interest, or to a voluntary pooling agreement or a compulsory pooling order heretofore entered by the division.

Signature: *Michelle Sena* Date: 1/23/19
Printed Name: Michelle Sena
E-mail Address: msena@3roperating.com

¹⁸ SURVEYOR CERTIFICATION

I hereby certify that the well location shown on this plat was plotted from field notes of actual surveys made by me or under my supervision, and that the same is true and correct to the best of my belief.

01-16-2019
Date of Survey

Signature and Seal of *Jeffrey L. Fansler*
10034
Certificate Number

