

District I
 1625 N. French Dr., Hobbs, NM 88240
 Phone: (575) 393-6161 Fax: (575) 393-0720
District II
 811 S. First St., Artesia, NM 88210
 Phone: (575) 748-1283 Fax: (575) 748-9720
District III
 1000 Rio Brazos Road, Aztec, NM 87410
 Phone: (505) 334-6178 Fax: (505) 334-6170
District IV
 1220 S. St. Francis Dr., Santa Fe, NM 87505
 Phone: (505) 476-3460 Fax: (505) 476-3462

State of New Mexico
 Energy, Minerals & Natural Resources
 Department
OIL CONSERVATION DIVISION
 1220 South St. Francis Dr.
 Santa Fe, NM 87505

FORM C-102
 Revised August 1, 2011
 Submit one copy to appropriate
 District Office

AMENDED REPORT

WELL LOCATION AND ACREAGE DEDICATION PLAT

¹ API Number 30-025-44961		² Pool Code 98234		³ Pool Name WC-025 G-09 S263620C / WOLFCAMP	
⁴ Property Code 321646		⁵ Property Name FIRETHORN FED COM 26 36 04			⁶ Well Number 113H
⁷ OGRID No. 372224		⁸ Operator Name AMEREDEV OPERATING, LLC.			⁹ Elevation 2998'

¹⁰Surface Location

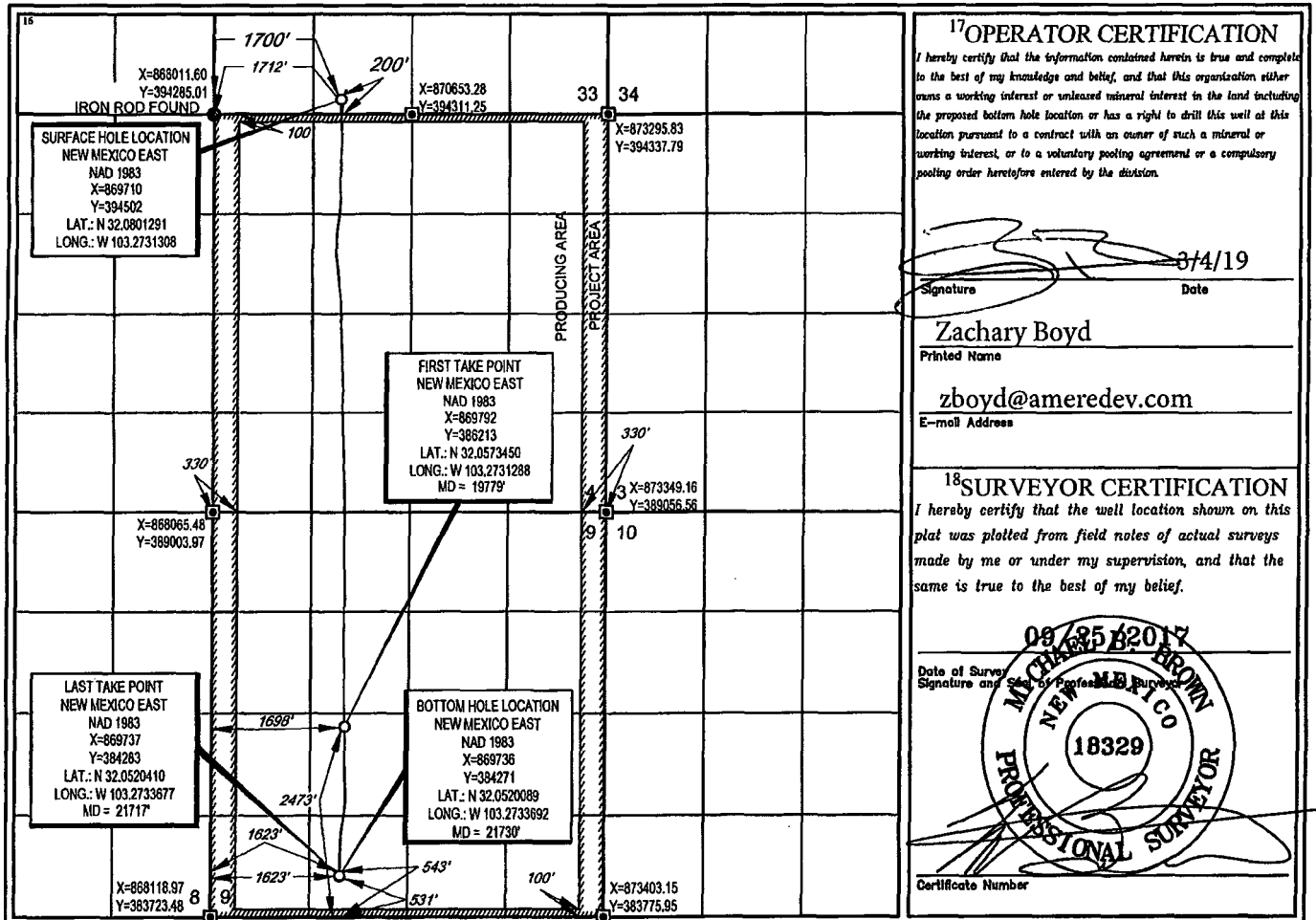
UL or lot no.	Section	Township	Range	Lot Idn	Feet from the	North/South line	Feet from the	East/West line	County
N	33	25-S	36-E	-	200'	NORTH	1700'	WEST	LEA

¹¹Bottom Hole Location If Different From Surface

UL or lot no.	Section	Township	Range	Lot Idn	Feet from the	North/South line	Feet from the	East/West line	County
N	9	26-S	36-E	-	531'	SOUTH	1623'	WEST	LEA

¹² Dedicated Acres 320	¹³ Joint or Infill	¹⁴ Consolidation Code	¹⁵ Order No.
--------------------------------------	-------------------------------	----------------------------------	-------------------------

No allowable will be assigned to this completion until all interests have been consolidated or a non-standard unit has been approved by the division.



SCALE: 1" = 1000'
 0' 500' 1000'

SECTION 33, TOWNSHIP 25-S, RANGE 36-E, N.M.P.M.
 LEA COUNTY, NEW MEXICO

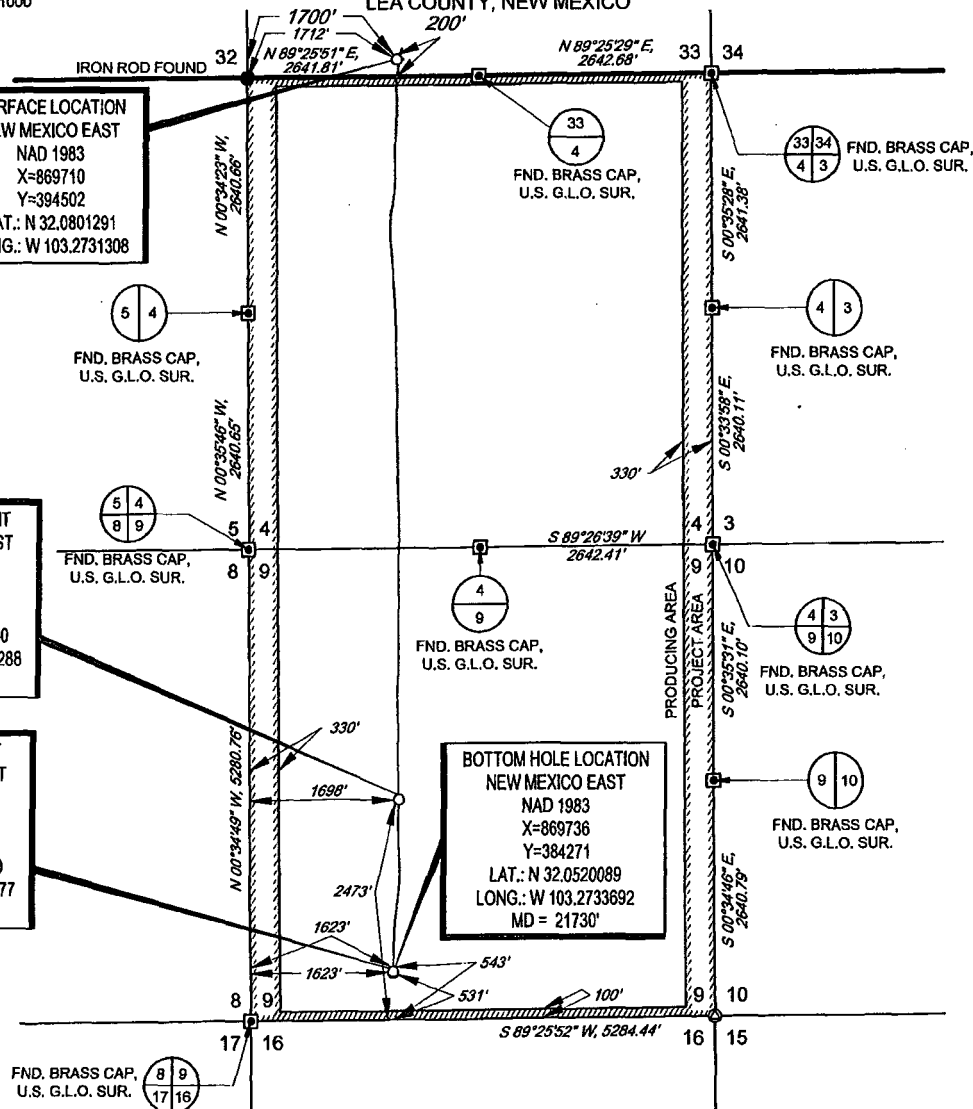


**SURFACE LOCATION
 NEW MEXICO EAST**
 NAD 1983
 X=869710
 Y=394502
 LAT.: N 32.0801291
 LONG.: W 103.2731308

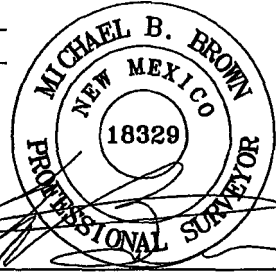
**FIRST TAKE POINT
 NEW MEXICO EAST**
 NAD 1983
 X=869792
 Y=386213
 LAT.: N 32.0573450
 LONG.: W 103.2731288
 MD = 19779'

**LAST TAKE POINT
 NEW MEXICO EAST**
 NAD 1983
 X=869737
 Y=384283
 LAT.: N 32.0520410
 LONG.: W 103.2733677
 MD = 21717'

**BOTTOM HOLE LOCATION
 NEW MEXICO EAST**
 NAD 1983
 X=869736
 Y=384271
 LAT.: N 32.0520089
 LONG.: W 103.2733692
 MD = 21730'



LEASE NAME & WELL NO.: FIRETHORN FED COM 26 36 04 113H
 SECTION 33 TWP 25-S RGE 36-E SURVEY N.M.P.M.
 COUNTY LEA STATE NM ELEVATION 2998'
 DESCRIPTION 200' FNL & 1700' FWL



Michael Blake Brown, P.S. No. 18329
 FEBRUARY 27, 2019



FIRETHORN FED COM 26 36 04 113H AS-DRILLED	REVISION: _____ _____ _____ _____ _____
	DATE: 02/27/19
	FILE: AD_FIRETHORN_FED_COM_26_36_04_113H
	DRAWN BY: JDR
	SHEET: 1 OF 1

- NOTES:**
1. ORIGINAL DOCUMENT SIZE: 8.5" X 11"
 2. ALL BEARINGS, DISTANCES, AND COORDINATE VALUES CONTAINED HEREIN ARE GRID BASED UPON THE NEW MEXICO STATE PLANE COORDINATE SYSTEM, EAST ZONE, U.S. SURVEY FEET, NORTH AMERICAN DATUM 1983.
 3. THIS WELL LOCATION SHOWN HEREON HAS BEEN SURVEYED ON THE GROUND UNDER MY SUPERVISION AND PREPARED ACCORDING TO THE EVIDENCE FOUND AT THE TIME OF SURVEY, AND DATA PROVIDED BY AMEREDEV OPERATING, LLC. THIS CERTIFICATION IS MADE AND LIMITED TO THOSE PERSONS OR ENTITIES SHOWN ON THE FACE OF THIS PLAT AND IS NON-TRANSFERABLE. THIS SURVEY IS CERTIFIED FOR THIS TRANSACTION ONLY.