

HOBBS OCD
APR 25 2019
RECEIVED



EOG Resources - Midland

Lea County, NM (NAD 83 NME)
Peachtree 24 Fed Com
#704H
OH

Design: OH

Midland PVA

06 February, 2019





Midland PVA

Company:	EOG Resources - Midland	Local Co-ordinate Reference:	Well #704H
Project:	Lea County, NM (NAD 83 NME)	TVD Reference:	KB = 25 @ 3389.0usft
Site:	Peachtree 24 Fed Com	MD Reference:	KB = 25 @ 3389.0usft
Well:	#704H	North Reference:	Grid
Wellbore:	OH	Survey Calculation Method:	Minimum Curvature
Design:	OH	Database:	EDM 5000.14

Project	Lea County, NM (NAD 83 NME)		
Map System:	US State Plane 1983	System Datum:	Mean Sea Level
Geo Datum:	North American Datum 1983		
Map Zone:	New Mexico Eastern Zone		

Site	Peachtree 24 Fed Com				
Site Position:		Northing:	372,756.00 usft	Latitude:	32° 1' 18.840 N
From:	Map	Easting:	783,433.00 usft	Longitude:	103° 31' 11.665 W
Position Uncertainty:	0.0 usft	Slot Radius:	13-3/16 "	Grid Convergence:	0.43 °

Well	#704H					
Well Position	+NAS	0.0 usft	Northing:	372,751.00 usft	Latitude:	32° 1' 18.867 N
	+E-W	0.0 usft	Easting:	782,398.00 usft	Longitude:	103° 31' 23.687 W
Position Uncertainty	0.0 usft		Wellhead Elevation:	usft	Ground Level:	3,364.0 usft

Wellbore	OH				
Magnetics	Model Name	Sample Date	Declination (°)	Dip Angle (°)	Field Strength (nT)
	IGRF2015	12/18/2018	8.75	59.86	47,689.30284717

Design	OH				
Audit Notes:					
Version:	1.0	Phase:	ACTUAL	Tie On Depth:	0.0
Vertical Section:	Depth From (TVD) (usft)	+N-S (usft)	+E-W (usft)	Direction (°)	
	0.0	0.0	0.0	359.01	

Survey Program	Date	2/8/2019			
From (usft)	To (usft)	Survey (Wellbore)	Tool Name	Description	
167.0	22,782.0	Pro MWD (OH)	MWD	OWSG MWD - Standard	



Midland PVA

Company: EOG Resources - Midland
 Project: Lea County, NM (NAD 83 NME)
 Site: Peachtree 24 Fed Com
 Well: #704H
 Wellbore: OH
 Design: OH

Local Co-ordinate Reference: Well #704H
 TVD Reference: KB = 25 @ 3389.0usft
 MD Reference: KB = 25 @ 3389.0usft
 North Reference: Grid
 Survey Calculation Method: Minimum Curvature
 Database: EDM 5000.14

Survey											
MD (usft)	Inc (")	Azi (azimuth) (")		TVD (usft)	N/S (usft)	E/W (usft)	DI Leg ("/100usft)	Buld ("/100usft)	Turn ("/100usft)	High to Plan (usft)	Right to Plan (usft)
0.0	0.00	0.00	0.00	0.0	0.0	0.0	0.00	0.00	0.00	0.0	0.0
167.0	0.30	149.50	149.50	167.0	-0.4	0.2	0.18	0.18	0.00	-0.4	0.0
224.0	0.50	149.40	149.40	224.0	-0.7	0.4	0.35	0.35	-0.18	-0.8	0.0
311.0	0.70	154.80	154.80	311.0	-1.5	0.8	0.24	0.23	8.21	-1.7	0.1
501.0	1.50	150.50	150.50	501.0	-4.7	2.8	0.42	0.42	-2.28	-5.4	-0.1
688.0	2.50	149.50	149.50	687.8	-10.4	5.8	0.54	0.53	-0.53	-11.9	-0.2
876.0	3.30	150.60	150.60	875.6	-18.6	10.6	0.43	0.43	0.59	-21.4	0.1
913.0	3.10	149.30	149.30	912.5	-20.4	11.6	0.57	-0.54	-3.51	-23.5	-0.4
1,028.0	3.60	147.50	147.50	1,027.3	-26.1	15.1	0.44	0.43	-1.57	-30.2	-1.3
1,216.0	0.30	81.20	81.20	1,215.2	-31.0	18.8	1.88	-1.76	-35.27	-13.8	-33.6
1,404.0	3.70	327.00	327.00	1,403.1	-25.9	16.0	2.04	1.81	-60.74	30.4	0.7
1,593.0	3.30	320.00	320.00	1,591.7	-16.6	9.2	0.31	-0.21	-3.70	18.6	3.7
1,781.0	2.90	318.60	318.60	1,779.5	-8.9	2.5	0.22	-0.21	-0.74	8.3	4.0
1,969.0	2.40	319.70	319.70	1,967.3	-2.3	-3.2	0.27	-0.27	0.59	-0.3	3.9
2,156.0	2.60	321.30	321.30	2,154.1	4.0	-8.3	0.11	0.11	0.86	-8.3	4.0
2,345.0	2.60	318.50	318.50	2,342.9	10.5	-13.9	0.07	0.00	-1.48	-17.1	3.4
2,439.0	2.30	319.30	319.30	2,436.8	13.6	-16.5	0.32	-0.32	0.85	-21.0	3.7
2,626.0	1.90	330.60	330.60	2,623.7	19.1	-20.5	0.31	-0.21	6.04	-26.7	8.5
2,814.0	1.90	335.00	335.00	2,811.6	24.6	-23.3	0.08	0.00	2.34	-32.2	10.7
3,001.0	1.10	115.00	115.00	2,998.5	26.7	-23.0	1.51	-0.43	74.87	32.1	14.5
3,189.0	3.00	101.00	101.00	3,186.4	25.0	-16.5	1.04	1.01	-7.45	21.0	21.4
3,378.0	4.30	98.70	98.70	3,375.0	23.2	-4.6	0.70	0.69	-2.28	7.3	22.5
3,566.0	4.50	127.40	127.40	3,562.5	17.9	8.2	1.24	0.11	16.33	4.3	19.2
3,681.0	4.40	123.40	123.40	3,657.2	13.7	14.2	0.34	-0.11	-4.21	-4.3	19.2
3,847.0	3.70	103.20	103.20	3,842.8	6.4	26.0	0.85	-0.38	-10.86	-23.4	14.1
4,034.0	2.00	87.30	87.30	4,029.5	7.1	35.2	0.99	-0.91	-8.50	-35.4	5.5
4,222.0	1.00	147.60	147.60	4,217.5	5.9	39.3	0.93	-0.53	32.18	-16.0	36.4



Midland PVA

Company: EOG Resources - Midland
 Project: Lea County, NM (NAD 83 NME)
 Site: Peachtree 24 Fed Com
 Well: #704H
 Wellbore: OH
 Design: OH

Local Co-ordinate Reference: Well #704H
 TVD Reference: KB = 25 @ 3389.0usft
 MD Reference: KB = 25 @ 3389.0usft
 North Reference: Grid
 Survey Calculation Method: Minimum Curvature
 Database: EDM 5000.14

Survey

MD (usft)	Inc (")	Azi (azimuth) (°)	TVD (usft)	N/S (usft)	EW (usft)	DLeg (°/100usft)	Build (°/100usft)	Turn (°/100usft)	High to Plan (usft)	Right to Plan (usft)
4,409.0	3.30	187.40	4,404.3	-0.8	39.5	1.39	1.23	21.18	4.3	38.3
4,598.0	5.30	148.00	4,592.8	-13.6	43.4	1.83	1.06	-20.85	-34.5	29.7
4,785.0	1.80	162.30	4,778.4	-23.8	48.9	1.87	-1.82	7.65	-37.6	39.4
4,974.0	4.40	179.00	4,968.1	-34.1	50.0	1.40	1.32	8.84	-34.9	49.5
5,161.0	4.00	229.50	5,154.7	-45.5	45.2	1.92	-0.21	27.01	4.8	64.0
5,349.0	3.30	304.20	5,342.4	-46.8	35.7	2.37	-0.37	39.73	56.0	11.1
5,537.0	3.20	308.60	5,530.1	-40.5	27.1	0.14	-0.05	2.34	45.4	-5.2
5,725.0	2.80	305.50	5,717.8	-34.5	19.3	0.23	-0.21	-1.65	35.8	-15.3
5,912.0	1.60	215.30	5,904.7	-34.0	14.1	1.73	-0.64	-48.24	24.9	31.3
6,101.0	2.10	187.90	6,093.6	-39.4	11.5	0.40	0.26	-9.21	20.3	40.3
6,290.0	2.60	208.80	6,282.5	-46.5	8.3	0.35	0.26	5.77	32.2	37.6
6,477.0	2.80	220.30	6,469.3	-53.7	3.3	0.31	0.11	6.15	42.6	30.5
6,665.0	4.20	229.30	6,656.9	-61.7	-4.8	0.80	0.74	4.79	47.4	21.3
6,852.0	3.80	233.80	6,843.5	-69.8	-15.0	0.27	-0.21	2.41	47.6	14.2
7,039.0	3.60	232.90	7,030.1	-77.0	-24.7	0.11	-0.11	-0.48	47.0	11.1
7,228.0	5.90	228.50	7,218.4	-87.0	-36.7	1.23	1.22	-2.33	42.5	11.5
7,416.0	2.70	224.40	7,405.9	-96.6	-47.1	1.71	-1.70	-2.18	39.7	11.9
7,603.0	3.00	219.20	7,592.6	-103.5	-53.2	0.21	0.16	-2.78	41.5	14.2
7,791.0	2.90	223.50	7,780.4	-110.8	-59.6	0.13	-0.05	2.29	44.8	9.8
7,977.0	2.50	225.70	7,968.2	-117.0	-65.8	0.22	-0.22	1.18	40.5	7.5
8,165.0	2.20	221.10	8,154.0	-122.6	-71.1	0.19	-0.16	-2.45	32.1	10.4
8,351.0	2.00	222.50	8,339.9	-127.7	-75.6	0.11	-0.11	0.75	25.5	8.7
8,539.0	2.50	219.00	8,527.7	-133.3	-80.4	0.28	0.27	-1.86	17.5	11.0
8,727.0	2.10	215.80	8,715.6	-139.3	-85.0	0.22	-0.21	-1.70	9.3	11.8
8,914.0	2.00	218.40	8,902.5	-144.6	-89.0	0.07	-0.05	1.39	3.2	11.5
9,103.0	1.80	223.30	9,091.4	-149.4	-93.1	0.14	-0.11	2.59	-2.1	11.4
9,290.0	1.80	227.20	9,278.3	-153.6	-97.4	0.09	0.05	2.09	-7.3	11.8



Midland PVA

Company: EOG Resources - Midland
 Project: Lea County, NM (NAD 83 NME)
 Site: Peachtree 24 Fed Com
 Well: #704H
 Wellbore: OH
 Design: OH

Local Co-ordinate Reference: Well #704H
 TVD Reference: KB = 25 @ 3389.0usft
 MD Reference: KB = 25 @ 3389.0usft
 North Reference: Grid
 Survey Calculation Method: Minimum Curvature
 Database: EDM 5000.14

Survey

MD (usft)	Inc (")	Azi (azimuth) (")	TVD (usft)	N/S (usft)	E/W (usft)	DLeg ("/100usft)	Build ("/100usft)	Turn ("/100usft)	High to Plan (usft)	Right to Plan (usft)
9,478.0	0.80	255.50	9,486.2	-158.1	-101.1	0.63	-0.53	15.05	-5.1	15.3
9,866.0	0.80	245.70	9,854.2	-157.0	-103.7	0.09	-0.05	-5.21	-10.4	14.0
9,854.0	1.10	280.60	9,842.2	-157.2	-106.7	0.34	0.16	18.56	-3.4	18.2
10,041.0	2.00	291.70	10,028.1	-155.7	-111.5	0.51	0.48	5.84	-4.9	18.8
10,228.0	2.20	277.10	10,216.0	-154.0	-118.1	0.30	0.11	-7.81	-16.2	16.2
10,416.0	2.80	260.20	10,403.8	-154.4	-126.2	0.50	0.32	-8.99	-28.3	9.7
10,604.0	3.40	270.80	10,591.5	-155.1	-136.3	0.44	0.32	5.64	-36.1	15.6
10,791.0	1.70	311.10	10,778.3	-153.2	-144.0	1.27	-0.91	21.55	-24.5	38.8
10,980.0	1.40	241.90	10,967.3	-152.4	-148.1	0.94	-0.16	-38.61	-48.3	-11.7
11,167.0	0.80	194.10	11,154.3	-154.9	-150.5	0.56	-0.27	-25.56	-26.8	-45.3
11,355.0	1.30	189.20	11,342.2	-158.5	-151.2	0.22	0.21	-2.61	-26.4	-47.6
11,543.0	1.70	197.90	11,530.2	-163.2	-152.4	0.24	0.21	4.63	-38.2	-42.7
11,731.0	1.50	218.80	11,718.1	-167.8	-154.8	0.33	-0.11	11.12	-56.0	-25.3
11,918.0	1.50	240.70	11,905.0	-170.9	-158.4	0.30	0.00	11.71	-66.1	-1.7
11,948.0	1.50	242.50	11,935.0	-171.3	-159.1	0.16	0.00	6.00	-66.9	0.4
12,064.0	1.30	278.60	12,051.0	-171.8	-161.8	0.77	-0.17	31.12	-58.3	40.7
12,158.0	2.70	34.70	12,144.9	-169.8	-161.6	3.70	1.49	123.51	59.5	33.7
12,252.0	23.10	16.80	12,236.1	-150.1	-154.9	21.86	21.70	-19.04	27.8	49.3
12,346.0	39.60	7.40	12,316.2	-102.4	-145.7	18.26	17.55	-10.00	-10.0	47.1
12,440.0	48.60	4.80	12,383.6	-37.4	-138.8	9.78	9.57	-2.77	-44.8	42.9
12,534.0	55.70	5.40	12,441.2	36.5	-132.2	7.57	7.55	0.64	-73.2	37.2
12,628.0	60.00	4.10	12,491.2	115.6	-125.6	4.72	4.57	-1.38	-90.6	27.9
12,721.0	62.50	1.10	12,536.0	197.2	-122.0	3.80	2.69	-3.23	-90.5	20.5
12,816.0	64.80	359.00	12,578.1	282.4	-121.9	3.21	2.53	-2.21	-71.0	19.5
12,910.0	70.50	359.70	12,613.7	368.3	-122.9	6.00	5.96	0.74	-38.8	20.1
12,957.0	76.40	3.10	12,627.1	414.3	-121.8	14.34	12.55	7.23	-25.5	18.1
13,004.0	81.10	4.80	12,636.3	460.3	-118.6	10.61	10.00	3.62	-16.5	14.3



Midland PVA

Company: EOG Resources - Midland
 Project: Lea County, NM (NAD 83 NME)
 Site: Peachtree 24 Fed Com
 Well: #704H
 Wellbore: OH
 Design: OH

Local Co-ordinate Reference: Well #704H
 TVD Reference: KB = 25 @ 3389.0usft
 MD Reference: KB = 25 @ 3389.0usft
 North Reference: Grid
 Survey Calculation Method: Minimum Curvature
 Database: EDM 5000.14

Survey

MD (usft)	Inc (°)	Azi (azimuth) (°)	TVD (usft)	N/S (usft)	EW (usft)	DLeg (°/100usft)	Build (°/100usft)	Turn (°/100usft)	High to Plan (usft)	Right to Plan (usft)
13,051.0	84.80	4.60	12,642.0	508.8	-114.8	8.10	8.09	-0.43	-10.9	10.0
13,097.0	88.10	4.80	12,645.6	552.5	-111.0	2.64	2.61	0.43	-7.3	5.9
13,191.0	90.10	3.20	12,648.7	646.2	-104.5	4.58	4.26	-1.70	-4.2	-1.4
13,288.0	92.00	5.10	12,647.0	740.9	-97.6	2.83	2.00	2.00	-6.0	-8.9
13,380.0	88.10	1.70	12,646.9	834.7	-92.0	5.50	-4.15	-3.62	-6.1	-15.2
13,474.0	92.10	1.90	12,648.7	928.6	-89.1	4.26	4.26	0.21	-6.2	-18.9
13,569.0	88.90	359.10	12,645.9	1,023.6	-88.2	4.48	-3.37	-2.95	-7.0	-20.4
13,663.0	89.40	359.20	12,647.3	1,117.6	-89.6	0.54	0.53	0.11	-5.7	-19.7
13,757.0	90.00	359.40	12,647.8	1,211.6	-90.8	0.67	0.64	0.21	-5.2	-19.2
13,851.0	90.30	359.10	12,647.6	1,305.5	-92.0	0.45	0.32	-0.32	-5.4	-18.7
13,945.0	88.80	359.30	12,648.3	1,399.5	-93.3	1.61	-1.60	0.21	-4.7	-18.1
14,040.0	90.20	359.90	12,648.1	1,494.5	-94.0	1.80	1.47	0.63	-3.8	-18.1
14,134.0	91.90	0.20	12,647.4	1,588.5	-93.9	1.84	1.61	0.32	-5.8	-18.9
14,229.0	89.90	358.40	12,645.9	1,683.5	-95.1	2.83	-2.11	-1.89	-7.1	-18.4
14,323.0	89.40	357.50	12,646.5	1,777.4	-98.4	1.10	-0.53	-0.96	-6.5	-15.8
14,418.0	89.30	357.40	12,647.8	1,872.3	-102.7	0.15	-0.11	-0.11	-5.4	-12.2
14,512.0	93.20	357.50	12,645.5	1,966.2	-108.8	4.15	4.15	0.11	-7.5	-8.7
14,607.0	92.60	359.40	12,640.7	2,061.0	-109.4	2.09	-0.63	2.00	-12.3	-6.9
14,701.0	89.90	1.30	12,638.7	2,155.0	-108.8	3.51	-2.87	2.02	-14.3	-8.2
14,796.0	90.00	1.60	12,638.7	2,250.0	-108.4	0.33	0.11	0.32	-14.2	-11.3
14,889.0	89.00	1.50	12,639.5	2,342.9	-103.9	1.08	-1.08	-0.11	-13.4	-14.5
14,982.0	89.80	2.40	12,640.5	2,435.9	-100.7	1.29	0.86	0.97	-12.5	-18.3
15,076.0	89.70	4.10	12,640.9	2,528.7	-85.4	1.81	-0.11	1.81	-12.1	-24.3
15,170.0	87.50	3.10	12,643.2	2,623.5	-89.5	2.57	-2.34	-1.08	-9.8	-30.9
15,264.0	88.90	1.30	12,647.8	2,717.3	-85.9	2.02	-0.64	-1.91	-5.2	-35.2
15,358.0	91.80	359.30	12,648.9	2,811.2	-85.4	5.83	5.21	-2.13	-4.1	-36.4
15,452.0	91.10	358.30	12,646.5	2,805.2	-87.4	1.30	-0.74	-1.06	-6.5	-35.2



Midland PVA

Company: EOG Resources - Midland
 Project: Lea County, NM (NAD 83 NME)
 Site: Peachtree 24 Fed Com
 Well: #704H
 Wellbore: OH
 Design: OH

Local Co-ordinate Reference: Well #704H
 TVD Reference: KB = 25 @ 3389.0usft
 MD Reference: KB = 25 @ 3389.0usft
 North Reference: Grid
 Survey Calculation Method: Minimum Curvature
 Database: EDM 5000.14

Survey

MD (usft)	Inc (°)	Azi (azimuth) (°)	TVD (usft)	N/S (usft)	EW (usft)	DLeg (°/100usft)	Build (°/100usft)	Turn (°/100usft)	High to Plan (usft)	Right to Plan (usft)
15,546.0	90.20	358.80	12,645.4	2,999.2	-89.8	1.10	-0.96	0.53	-7.5	-33.5
15,640.0	89.60	359.00	12,645.6	3,093.1	-91.6	0.87	-0.64	0.21	-7.4	-32.4
15,735.0	89.90	359.30	12,646.0	3,188.1	-93.0	0.45	0.32	0.32	-7.0	-31.7
15,829.0	88.30	358.40	12,647.5	3,282.1	-94.9	1.85	-1.70	-0.96	-5.5	-30.5
15,923.0	86.40	358.10	12,651.8	3,375.9	-97.7	2.05	-2.02	-0.32	-1.1	-28.3
16,017.0	87.70	356.50	12,656.7	3,469.7	-102.2	2.19	1.38	-1.70	3.7	-24.8
16,110.0	91.30	357.10	12,657.5	3,562.5	-107.3	3.92	3.87	0.65	4.5	-20.1
16,204.0	92.20	358.10	12,654.6	3,656.4	-111.3	1.43	0.96	1.06	1.6	-16.8
16,297.0	91.30	359.20	12,651.8	3,749.3	-113.5	1.53	-0.97	1.18	-1.2	-15.3
16,391.0	89.80	359.20	12,650.9	3,843.3	-114.8	1.80	-1.60	0.00	-2.1	-14.7
16,485.0	89.80	358.70	12,651.2	3,937.3	-116.5	0.53	0.00	-0.53	-1.8	-13.7
16,507.0	88.80	358.80	12,651.5	3,959.3	-117.0	4.84	-4.55	0.91	-1.5	-13.4
16,601.0	88.40	359.10	12,653.8	4,053.3	-118.6	0.48	-0.43	0.21	0.8	-12.4
16,694.0	89.70	0.00	12,655.3	4,146.2	-119.3	1.70	1.40	0.97	2.3	-12.4
16,789.0	90.40	0.50	12,655.2	4,241.2	-118.9	0.91	0.74	0.53	2.2	-13.5
16,883.0	89.20	359.60	12,655.6	4,335.2	-118.8	1.60	-1.28	-0.96	2.8	-14.3
16,977.0	87.40	357.00	12,658.3	4,429.1	-121.6	3.38	-1.91	-2.77	5.4	-12.2
17,071.0	88.30	358.30	12,661.9	4,522.9	-127.1	1.21	0.96	-0.74	8.9	-7.4
17,164.0	88.80	356.70	12,664.2	4,615.7	-132.8	0.69	0.54	0.43	11.2	-2.4
17,257.0	90.80	357.40	12,664.6	4,708.6	-137.6	2.28	2.15	0.75	11.6	1.7
17,351.0	90.10	358.30	12,663.8	4,802.5	-141.1	1.21	-0.74	0.96	10.8	4.5
17,444.0	88.80	357.20	12,664.7	4,895.4	-144.8	1.83	-1.40	-1.18	11.7	7.5
17,538.0	91.30	357.60	12,664.6	4,989.3	-149.0	2.69	2.66	0.43	11.6	11.0
17,632.0	89.50	358.30	12,664.0	5,083.3	-152.4	2.05	-1.91	0.74	11.0	13.7
17,726.0	89.00	358.30	12,665.2	5,177.2	-155.2	0.53	-0.53	0.00	12.2	15.8
17,820.0	89.40	357.40	12,666.5	5,271.1	-158.7	1.05	0.43	-0.96	13.5	18.8
17,914.0	90.80	357.80	12,666.3	5,365.1	-162.6	1.55	1.49	0.43	13.3	21.9



Midland PVA

Company: EOG Resources - Midland
 Project: Lea County, NM (NAD 83 NME)
 Site: Peachtree 24 Fed Com
 Well: #704H
 Wellbore: OH
 Design: OH

Local Co-ordinate Reference: Well #704H
 TVD Reference: KB = 25 @ 3389.0usft
 MD Reference: KB = 25 @ 3389.0usft
 North Reference: Grid
 Survey Calculation Method: Minimum Curvature
 Database: EDM 5000.14

MD (usft)	Inc (")	Azi (azimuth) (")	TVD (usft)	N/S (usft)	E/W (usft)	DLeg ("/100usft)	Build ("/100usft)	Turn ("/100usft)	High to Plan (usft)	Right to Plan (usft)
18,007.0	89.60	355.50	12,666.0	5,457.9	-168.1	2.79	-1.29	-2.47	12.9	28.6
18,102.0	90.60	358.00	12,665.9	5,552.7	-173.4	2.83	1.05	2.63	12.6	31.3
18,196.0	92.10	2.60	12,663.6	5,646.7	-173.0	5.15	1.60	4.89	10.3	30.1
18,290.0	90.80	5.50	12,661.3	5,740.4	-166.3	3.38	-1.38	3.09	7.9	22.8
18,384.0	89.50	4.20	12,661.0	5,834.1	-158.4	1.86	-1.38	-1.38	7.5	14.1
18,478.0	90.60	3.00	12,660.9	5,927.9	-152.5	1.73	1.17	-1.28	7.4	7.5
18,571.0	90.50	1.90	12,660.0	6,020.8	-148.5	1.19	-0.11	-1.18	6.4	2.9
18,665.0	88.00	1.40	12,661.3	6,114.7	-145.8	2.71	-2.66	-0.53	7.5	-0.5
18,759.0	88.80	1.70	12,663.9	6,208.6	-143.2	0.91	0.85	0.32	10.0	-3.7
18,853.0	91.70	2.60	12,663.5	6,302.6	-139.7	3.23	3.09	0.98	9.6	-8.0
18,947.0	90.80	2.30	12,661.4	6,396.5	-135.7	0.91	-0.85	-0.32	7.3	-12.7
19,041.0	89.60	2.00	12,660.9	6,490.4	-132.2	1.42	-1.38	-0.32	6.8	-16.9
19,135.0	89.80	1.90	12,661.4	6,584.3	-129.0	0.24	0.21	-0.11	7.2	-20.8
19,229.0	85.70	0.50	12,665.1	6,678.2	-127.0	4.81	-4.36	-1.49	10.8	-23.5
19,323.0	88.40	358.60	12,670.0	6,772.1	-127.8	3.51	2.87	-2.02	15.6	-23.4
19,416.0	89.30	359.60	12,671.8	6,865.0	-129.2	1.45	0.97	1.08	17.4	-22.8
19,510.0	90.70	358.80	12,671.8	6,959.0	-130.4	1.67	1.49	-0.74	17.3	-22.1
19,604.0	92.10	358.10	12,669.5	7,053.0	-132.9	1.72	1.49	-0.85	14.9	-20.4
19,698.0	92.70	358.30	12,665.6	7,146.8	-135.9	0.67	0.64	0.21	10.8	-18.1
19,791.0	89.10	358.50	12,664.1	7,239.8	-138.4	3.88	-3.87	0.22	9.3	-16.2
19,885.0	88.90	358.60	12,665.8	7,333.7	-140.8	0.24	-0.21	0.11	10.9	-14.5
19,979.0	91.60	359.70	12,665.4	7,427.7	-142.2	3.10	2.87	1.17	10.4	-13.8
20,073.0	88.80	358.30	12,665.0	7,521.7	-143.9	3.33	-2.98	-1.49	10.0	-12.9
20,168.0	89.00	358.50	12,666.9	7,616.6	-146.5	0.30	0.21	0.21	11.7	-10.9
20,261.0	89.30	358.70	12,668.2	7,709.6	-148.8	0.39	0.32	0.22	13.0	-9.3
20,356.0	89.80	358.40	12,669.0	7,804.6	-151.2	0.61	0.53	-0.32	13.6	-7.6
20,450.0	91.50	358.30	12,667.9	7,898.5	-153.9	1.81	1.81	-0.11	12.5	-5.8



Midland PVA

Company: EOG Resources - Midland
 Project: Lea County, NM (NAD 83 NME)
 Site: Peachtree 24 Fed Com
 Well: #704H
 Wellbore: OH
 Design: OH

Local Co-ordinate Reference: Well #704H
 TVD Reference: KB = 25 @ 3389.0usft
 MD Reference: KB = 25 @ 3389.0usft
 North Reference: Grid
 Survey Calculation Method: Minimum Curvature
 Database: EDM 5000.14

MD (usft)	Inc (°)	Azi (azimuth) (°)	TVD (usft)	N/S (usft)	E/W (usft)	DLeg (°/100usft)	Build (°/100usft)	Turn (°/100usft)	High to Plan (usft)	Right to Plan (usft)
20,544.0	91.70	358.20	12,665.3	7,992.4	-156.8	0.24	0.21	-0.11	9.8	-3.4
20,639.0	92.20	358.30	12,662.1	8,087.3	-159.7	0.54	0.53	0.11	6.5	-1.2
20,733.0	90.50	359.10	12,659.9	8,181.3	-161.8	2.00	-1.81	0.85	4.1	0.2
20,826.0	88.10	359.30	12,661.0	8,274.3	-163.1	2.59	-2.58	0.22	5.2	0.8
20,921.0	89.70	0.00	12,662.8	8,369.2	-163.7	1.84	1.68	0.74	6.9	0.7
21,016.0	88.40	358.50	12,664.4	8,464.2	-164.9	2.09	-1.37	-1.58	8.4	1.2
21,109.0	88.00	358.20	12,667.3	8,557.1	-167.6	0.54	-0.43	-0.32	11.2	3.2
21,203.0	88.40	358.40	12,670.3	8,651.0	-170.4	0.48	0.43	0.21	14.0	5.3
21,297.0	91.30	359.30	12,670.5	8,745.0	-172.3	3.23	3.09	0.96	14.1	6.5
21,391.0	91.20	359.00	12,668.5	8,839.0	-173.7	0.34	-0.11	-0.32	11.9	7.2
21,485.0	90.70	358.30	12,666.9	8,932.9	-175.9	0.92	-0.53	-0.74	10.2	8.7
21,579.0	88.30	356.60	12,667.7	9,026.8	-180.1	3.13	-2.55	-1.81	10.8	12.2
21,672.0	91.50	357.30	12,667.9	9,118.7	-185.0	3.52	3.44	0.75	10.8	16.4
21,766.0	90.50	356.80	12,666.2	9,213.5	-189.8	1.16	-1.06	-0.53	9.0	20.6
21,859.0	90.90	358.80	12,665.1	9,306.5	-193.4	2.19	0.43	2.15	7.7	23.5
21,954.0	89.60	359.20	12,664.7	9,401.4	-195.1	1.43	-1.37	0.42	7.2	24.4
22,047.0	89.80	359.30	12,665.2	9,494.4	-196.3	0.24	0.22	0.11	7.5	25.0
22,141.0	90.40	359.70	12,665.0	9,588.4	-197.1	0.77	0.64	0.43	7.2	25.1
22,234.0	89.30	358.90	12,665.3	9,681.4	-198.2	1.46	-1.18	-0.86	7.2	25.5
22,327.0	88.60	359.00	12,667.0	9,774.4	-199.9	0.76	-0.75	0.11	8.8	26.6
22,420.0	88.80	359.60	12,669.1	9,867.4	-201.1	0.68	0.22	0.65	10.7	27.0
22,515.0	90.10	0.00	12,670.0	9,962.3	-201.4	1.43	1.37	0.42	11.5	26.6
22,609.0	88.60	358.90	12,671.0	10,056.3	-202.3	1.98	-1.60	-1.17	12.4	26.8
22,703.0	88.70	358.90	12,673.3	10,150.3	-204.1	0.11	0.11	0.00	14.4	27.9
22,727.0	89.50	359.20	12,673.6	10,174.3	-204.5	3.56	3.33	1.25	14.8	28.2
22,792.0	89.50	359.20	12,674.2	10,239.3	-205.4	0.00	0.00	0.00	15.2	28.6



Midland PVA

Company: EOG Resources - Midland
 Project: Lea County, NM (NAD 83 NME)
 Site: Peachtree 24 Fed Cam
 Well: #704H
 Wellbore: OH
 Design: OH

Local Co-ordinate Reference: Well #704H
 TVD Reference: KB = 25 @ 3389.0usft
 MD Reference: KB = 25 @ 3389.0usft
 North Reference: Grid
 Survey Calculation Method: Minimum Curvature
 Database: EDM 5000.14

Design Annotations

Measured Depth (usft)	Vertical Depth (usft)	Local Coordinates		Comment
		+NLS (usft)	+EAW (usft)	
12,135.0	12,122.0	-170.8	-162.0	KOP, MD:12135.0', TVD:12122.0', N/S:-170.6', E/W:-162.0', INC:1.92
12,365.2	12,330.7	-90.0	-144.1	FTP Crossing, MD:12365.2', TVD:12330.7', N/S:-90.0', E/W:-144.1', INC:41.43
22,727.0	12,673.6	10,174.3	-204.5	Last MWD Survey (MD=22727.0')
22,782.0	12,674.2	10,239.3	-205.4	Projection to Bit (MD=22782.0')

Checked By: _____ Approved By: _____ Date: _____



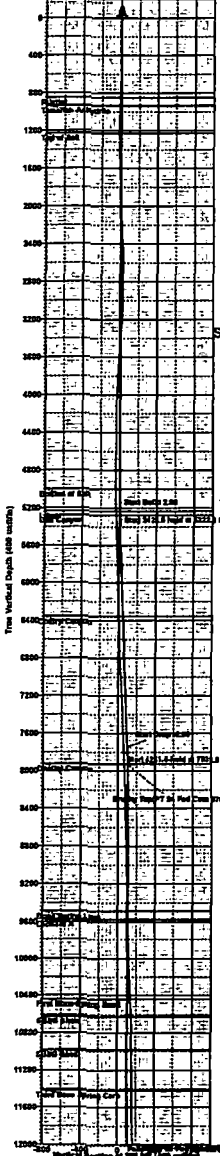
Lea County, NM (NAD 83 NME)
 Peachtree 24 Fed Com #704H
 Plan #1

PROJECT DETAILS: Lea County, NM (NAD 83 NME)
 Geodetic System: US State Plane 1983
 Datum: North American Datum 1983
 Ellipsoid: GRS 1980
 Zone: New Mexico Eastern Zone
 System Datum: Mean Sea Level

WELL DETAILS: #704H
 KB = 25 @ 3389.0usft 3384.0
 Northing 372781.00 Easting 782288.00 Latitude 32° 1' 19.867 N Longitude 103° 31' 23.687 W

Adjusted to Grid North
 True North: 4.67°
 Magnetic North: 5.75°
 Magnetic Declination: 47972401
 Dip Angle: 0.00°
 Declination Correction: 0.00°

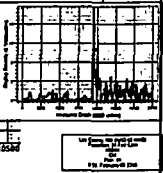
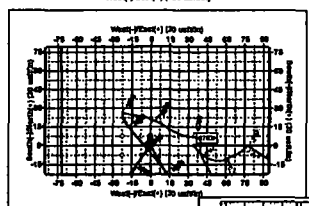
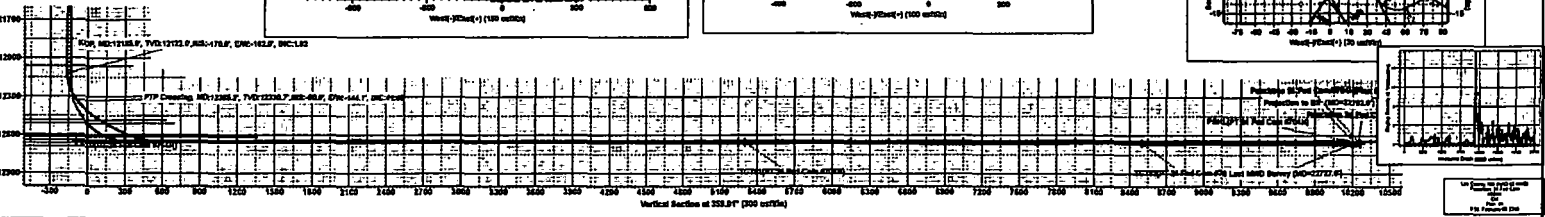
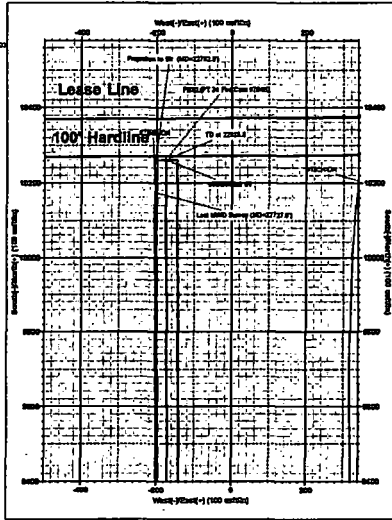
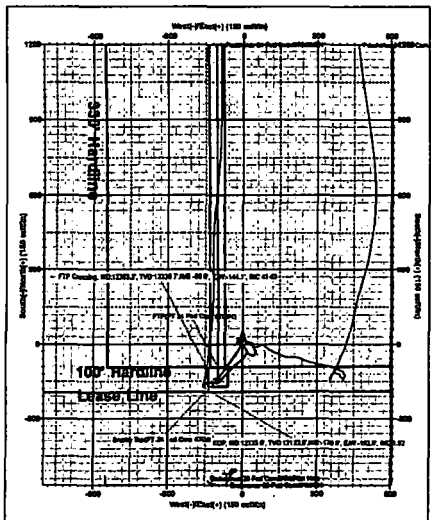
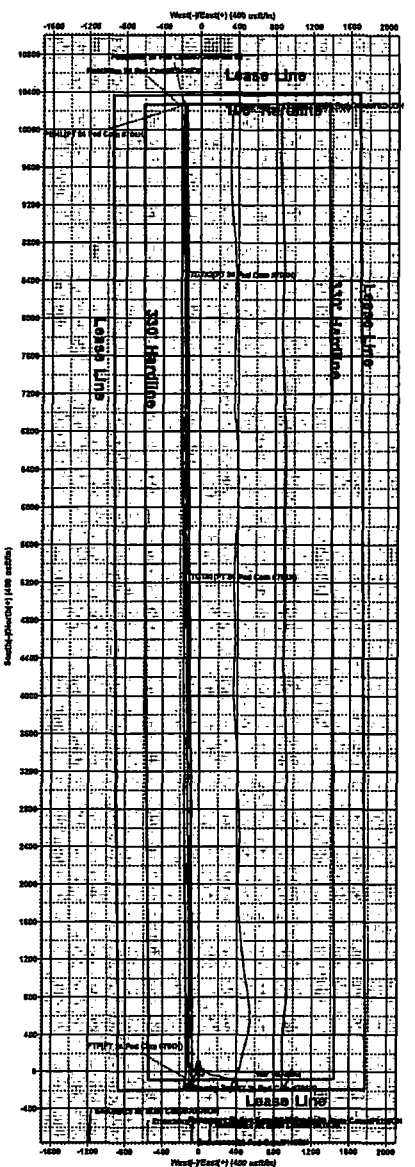
To convert a Magnetic Direction to a Grid Direction, Add 5.32°
 To convert a Magnetic Direction to a True Direction, Add 6.75° East
 To convert a True Direction to a Grid Direction, Subtract 0.42°



Sec	MD	Inc	Azi	TVD	+N-S	+E-W	Dleg	TFace	Vsect	Target
1	0.0	0.00	0.00	0.0	0.0	0.0	0.00	0.00	0.0	
2	5134.0	0.00	0.00	5134.0	0.0	0.0	0.00	0.00	0.0	
3	5322.5	3.77	215.54	5322.3	-5.0	-3.6	2.00	215.54	-5.0	
4	7751.1	3.77	215.54	7745.7	-135.0	-86.4	0.00	0.00	-133.3	
5	7939.5	0.00	0.00	7934.0	-140.0	-100.0	2.00	180.00	-138.3	
6	12181.0	0.00	0.00	12175.5	-140.0	-100.0	0.00	0.00	-138.3	
7	12931.0	90.00	359.58	12853.0	337.4	-103.5	12.00	359.58	339.2	
8	17892.1	90.00	359.58	12853.0	5298.4	-140.3	0.00	0.00	5300.0	TGT#1 (PT 24 Fed Com #704H)
9	17894.8	89.95	359.58	12853.0	5301.1	-140.3	2.00	-180.00	5302.7	
0	21092.2	89.95	359.58	12858.0	8498.4	-163.9	0.00	0.00	8500.0	TGT#2 (PT 24 Fed Com #704H)
1	21094.4	89.90	359.58	12858.0	8500.6	-164.0	2.00	-180.00	8502.2	
2	22855.8	89.90	359.58	12859.0	10282.0	-177.0	0.00	0.00	10283.5	PBHL (PT 24 Fed Com #704H)

CASING DETAILS
 No casing data is available

Name	TVD	+N-S	+E-W	Northing	Easting
TOTW (PT 24 Fed Com #704H)	12853.0	5298.4	-140.3	378048.40	782287.74
TGT#2 (PT 24 Fed Com #704H)	12858.0	8498.4	-163.9	381363.40	782284.65
PBHL (PT 24 Fed Com #704H)	12859.0	10282.0	-177.0	383913.00	782281.00
Brashly Top (PT 24 Fed Com #704H)	7822.0	-140.0	-100.0	372811.00	782288.00
FTT (PT 24 Fed Com #704H)	12853.0	-80.0	-100.0	372811.00	782288.00



US Geologic Survey
 Open-File Report 89-10
 1989