

Energy,
OIL &
RECEIVED
LOCATION

FORM C-102
Revised August 1, 2011
Submit one copy to appropriate
District Office

AMENDED REPORT

WELL LOCATION AND ACREAGE DEDICATION PLAT

| | | | | |
|---|--|--|---|---|
| ¹ API Number 30-025- 46145 | | ² Pool Code 98236 - 37813 | ³ Pool Name JAL; WC; WEST WC-025 G-09 S263620C; Wolfcamp "A" XY7 | |
| ⁴ Property Code 322647 | ⁵ Property Name NANDINA FED COM 25 36 31 FED COM | | | ⁶ Well Number 101H |
| ⁷ GRID No. 372224 | ⁸ Operator Name AMEREDEV OPERATING, LLC. | | | ⁹ Elevation 3022' |

¹⁰Surface Location

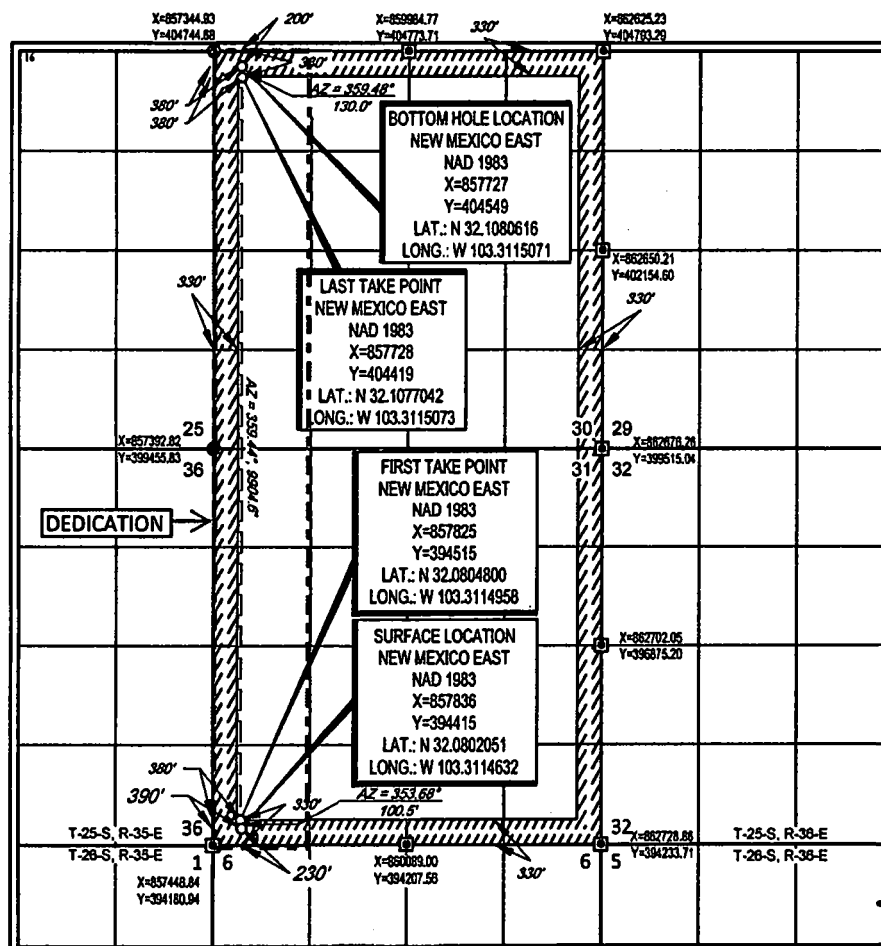
| | | | | | | | | | |
|---------------|---------|----------|-------|---------|---------------|------------------|---------------|----------------|--------|
| UL or lot no. | Section | Township | Range | Lot Idn | Feet from the | North/South line | Feet from the | East/West line | County |
| M(4) | 31 | 25-S | 36-E | 4 | 230' | SOUTH | 390' | WEST | LEA |

¹¹Bottom Hole Location If Different From Surface

| UL or lot no. | Section | Township | Range | Lot ldn | Feet from the | North/South line | Feet from the | East/West line | County |
|---------------|---------|----------|-------|---------|---------------|------------------|---------------|----------------|--------|
| 1 | 30 | 25-S | 36-E | 1 | 200' | NORTH | 380' | WEST | LEA |

| | | | |
|-----------------------------|--------------------|----------------------------|--------------|
| 10 Dedicated Acres 320.4 | 11 Joint or Infill | 12 Consolidation Code C | 13 Order No. |
|-----------------------------|--------------------|----------------------------|--------------|

No allowable will be assigned to this completion until all interests have been consolidated or a non-standard unit has been approved by the division.



17 OPERATOR CERTIFICATION

I hereby certify that the information contained herein is true and complete to the best of my knowledge and belief, and that this organization otherwise owns a working interest or undivided mineral interest in the land (including the proposed bottom hole location) or has a right to drill this well at this location pursuant to a contract with an owner of such a mineral or working interest, or to a voluntary pooling agreement or a compulsory pooling order heretofore entered by the Division.

De Haan 9/7/2018
Signature Date

Floyd Hammond

Printed Name _____

fhammond@ameredev.com

E-mail Address

18 SURVEYOR CERTIFICATION

I hereby certify that the well location shown on this plat was plotted from field notes of actual surveys made by me or under my supervision, and that the same is true to the best of my belief.

05/WO/2018
Date of Survey: _____
Clearance and _____

Date of Survey _____
Structure and Site of _____

NEW YORK CO
19842

PROFESSOR

Certificate Number

S:\SURVEY\AMEREDEV_OPERATING_LLC\NANDINA FED COM\FINAL PRODUCTS\LO NANDINA FED COM 25 36 31 101H.DWG 8/6/2018 3:13:30 PM ccaston