

HOBBS OGD
RECEIVED
JUL 09 2019
Energy.

Form C-102
Revised August 1, 2011
Submit one copy to appropriate
District Office

☐ AMENDED REPORT

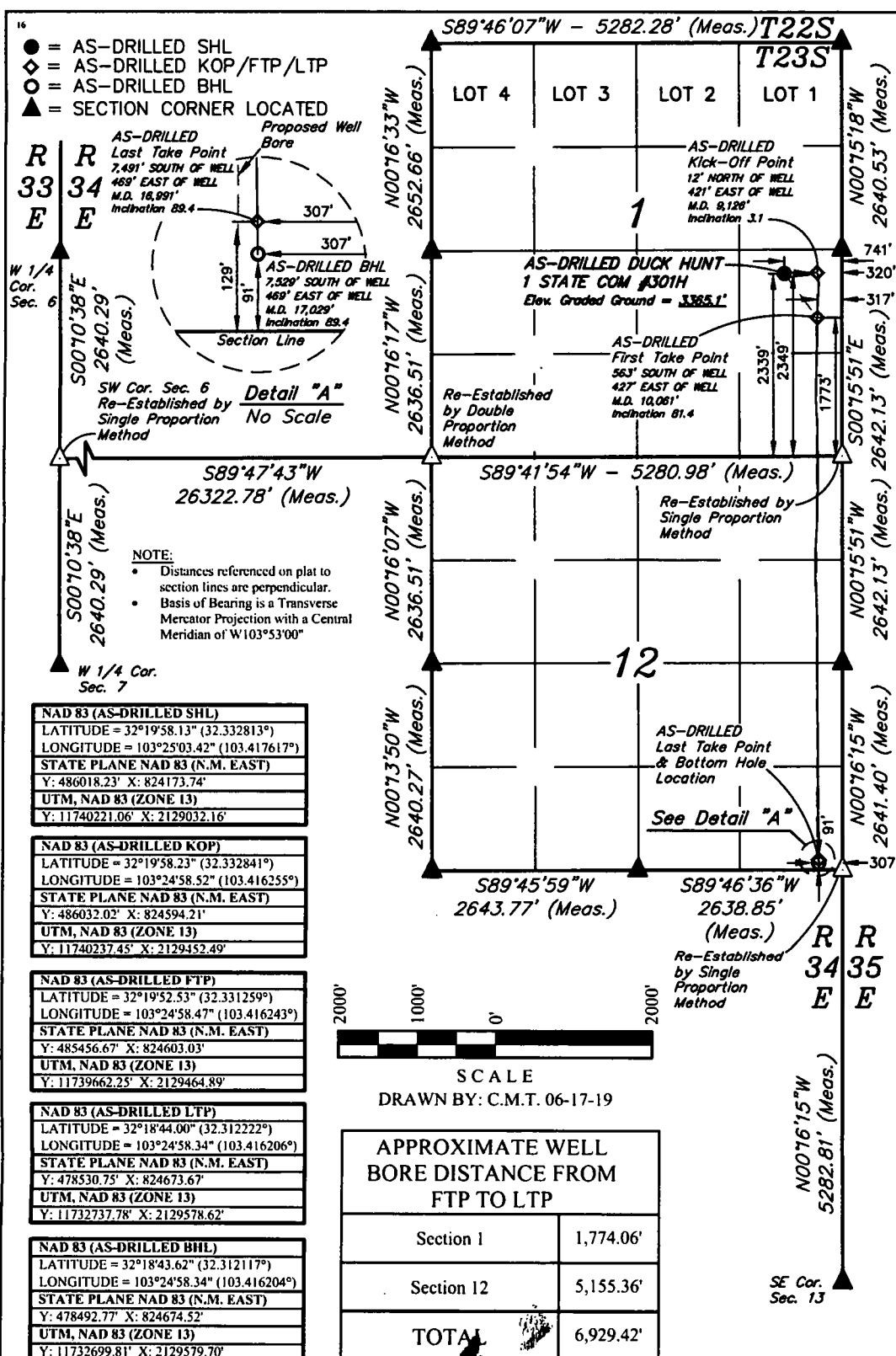
1 API Number 70-025-45362		2 Pool Code 2205		3 Pool Name ANTHONY RIDGE - BS, NORTH	
4 Property Code 321644		5 Property Name DUCK HUNT 1 STATE COM		6 Well Number #301H	
7 Elevation 3721.85		8 Operator Name CENTENNIAL RESOURCE PRODUCTION, LLC		9 Elevation 3365.1'	

UL or lot no. 1	Section 1	Township 23S	Range 34E	Lot Idn	Feet from the 2339	North/South line SOUTH	Feet from the 741	East/West line EAST	County LEA
--------------------	--------------	-----------------	--------------	---------	-----------------------	---------------------------	----------------------	------------------------	---------------

UL or lot no. P	Section 12	Township 23S	Range 34E	Lot Idn	Feet from the 91	North/South line SOUTH	Feet from the 307	East/West line EAST	County LEA
--------------------	---------------	-----------------	--------------	---------	---------------------	---------------------------	----------------------	------------------------	---------------

¹² Dedicated Acres 240	¹³ Joint or Infill	¹⁴ Consolidation Code	¹⁵ Order No.
--------------------------------------	-------------------------------	----------------------------------	-------------------------

No allowable will be assigned to this completion until all interests have been consolidated or a non-standard unit has been approved by the division.



I hereby certify that the information contained herein is true and complete to the best of my knowledge and belief, and that this organization either owns a working interest or unleased mineral interest in the land including the proposed bottom hole location or has a right to drill this well at this location pursuant to a contract with an owner of such a mineral or working interest, or to a voluntary pooling agreement or a compulsory pooling order heretofore entered by the division.

Signature _____ Date _____

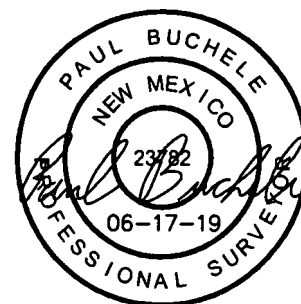
Printed Name _____

E-mail Address

I hereby certify that the well location shown on this plat was plotted from field notes of actual surveys made by me or under my supervision, and that the same is true and correct to the best of my belief.

March 20, 2019

Date of Survey _____
Signature and Seal of Professional Surveyor: _____



Certificate Number: