

DISTRICT I  
1600 N. FRANKLIN DR., HOBBBS, NM 88340  
Phone: (505) 882-6181 Fax: (505) 882-0780

DISTRICT II  
811 S. FIRST ST., ALBUQUERQUE, NM 88310  
Phone: (505) 748-1223 Fax: (505) 748-0778

DISTRICT III  
1000 RIO BRAZOS RD., ALBUQUERQUE, NM 87410  
Phone: (505) 334-6178 Fax: (505) 334-6170

DISTRICT IV  
1600 S. ST. FRANCIS DR., SANTA FE, NM 87505  
Phone: (505) 476-5455 Fax: (505) 476-5455

State of New Mexico  
Energy, Minerals & Natural Resources Department  
**OIL CONSERVATION DIVISION**  
123 SOUTH ST. FRANCIS DR.  
Santa Fe, New Mexico 87505

Form C-102  
Revised August 1, 2011  
Submit one copy to appropriate  
District Office

☐ AMENDED REPORT

**WELL LOCATION AND ACREAGE DEDICATION PLAT**

API Number <b>30-025-45350</b>	Pool Code <b>96660</b>	Pool Name <b>BERRY; BONE SPRING, SOUTH</b>
Property Code <b>322866</b>	Property Name <b>CHILES 28-21 STATE COM</b>	Well Number <b>1H</b>
GRID No. <b>6137</b>	Operator Name <b>DEVON ENERGY PRODUCTION COMPANY, L.P.</b>	Elevation <b>3712.0'</b>

**Surface Location**

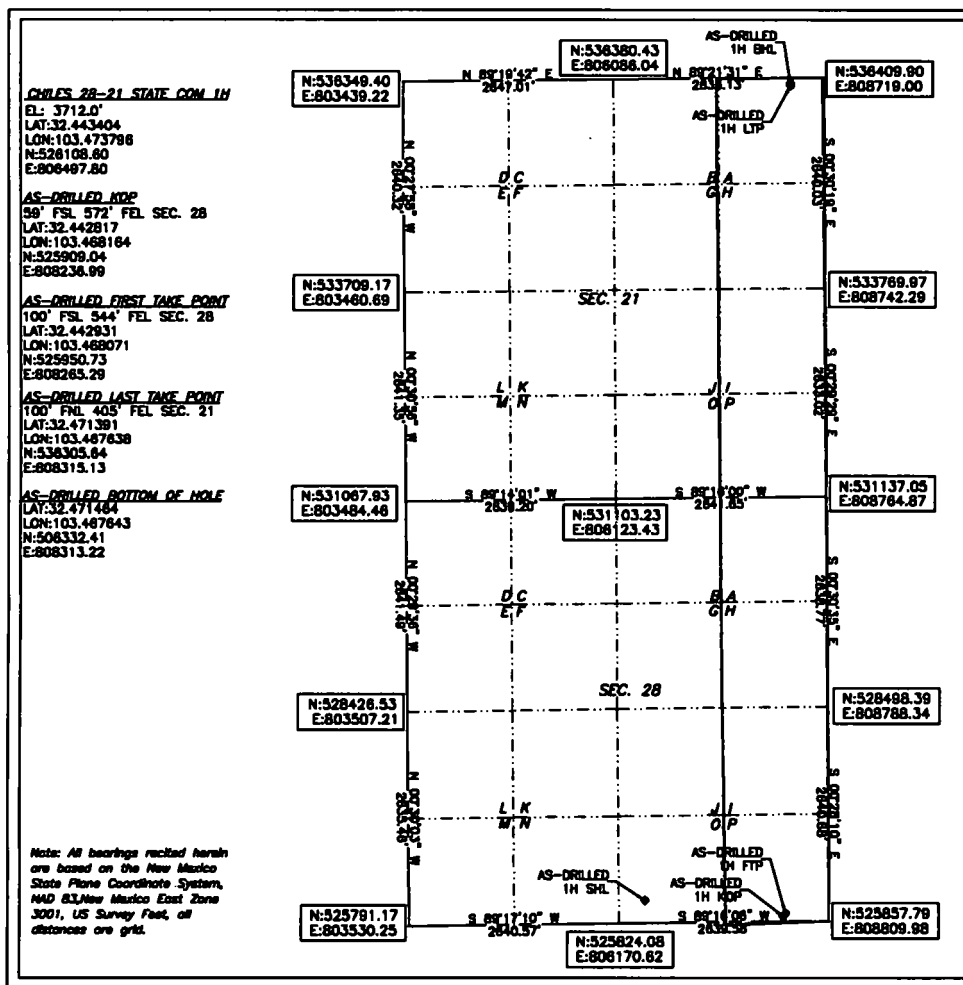
UL or lot No.	Section	Township	Range	Lot Idn	Feet from the	North/South line	Feet from the	East/West line	County
<b>0</b>	<b>28</b>	<b>21-S</b>	<b>34-E</b>		<b>280</b>	<b>SOUTH</b>	<b>2310</b>	<b>EAST</b>	<b>LEA</b>

**Bottom Hole Location If Different From Surface**

UL or lot No.	Section	Township	Range	Lot Idn	Feet from the	North/South line	Feet from the	East/West line	County
<b>A</b>	<b>21</b>	<b>21-S</b>	<b>34-E</b>		<b>73</b>	<b>NORTH</b>	<b>406</b>	<b>EAST</b>	<b>LEA</b>

Dedicated Acres	Joint or Infill	Consolidation Code	Order No.
<b>320</b>			

**NO ALLOWABLE WILL BE ASSIGNED TO THIS COMPLETION UNTIL ALL INTERESTS HAVE BEEN CONSOLIDATED OR A NON-STANDARD UNIT HAS BEEN APPROVED BY THE DIVISION**



**OPERATOR CERTIFICATION**

I hereby certify that the information herein is true and complete to the best of my knowledge and belief, and that this organization either owns a working interest or unleased mineral interest in the land including the proposed bottom hole location or has a right to drill this well at this location pursuant to a contract with an owner of such mineral or working interest, or to a voluntary pooling agreement or a compulsory pooling order heretofore entered by the division.

Rebecca Deal 8/5/2019  
Signature Date

Rebecca Deal, Regulatory Analyst  
Printed Name

rebecca.deal@dm.com  
E-mail Address

**SURVEYOR CERTIFICATION**

I hereby certify that the well location shown on this plat was plotted from field notes of actual surveys made by me or under my supervision, and that the same is true and correct to the best of my belief.

06/2019

Date of Survey

Signature & Seal of Professional Surveyor



08/04/19

Certificate No. 22404 B.L. LAMAN  
W.O. # DRAWN BY: CM