

District I
1625 N. French Dr., Hobbs, NM 88240
Phone: (575) 393-6161 Fax: (575) 393-0720
District II
811 S. First St., Artesia, NM 88210
Phone: (575) 748-1283 Fax: (575) 748-9720
District III
1000 Rio Brazos Road, Aztec, NM 87410
Phone: (505) 334-6178 Fax: (505) 334-6170
District IV
1220 S. St. Francis Dr., Santa Fe, NM 87505
Phone: (505) 476-3460 Fax: (505) 476-3462

State of New Mexico
Energy, Minerals & Natural Resources
Department
OIL CONSERVATION DIVISION
1220 South St. Francis Dr.
Santa Fe, NM 87505

FORM C-102
Revised August 1, 2011
Submit one copy to appropriate
District Office

AMENDED REPORT

HOBBES OCD
RECEIVED
AUG 28 2019

WELL LOCATION AND ACREAGE DEDICATION PLAT

¹ API Number 70-025-45897	² Pool Code 99234	³ Pool Name WC-025 G-09 9263619C; WC
⁴ Property Code 324400	⁵ Property Name CAMELLIA FED COM 26 36 21	
⁶ GRID No. 772224	⁷ Operator Name AMEREDEV OPERATING, LLC.	⁸ Elevation 2924'

¹⁰Surface Location

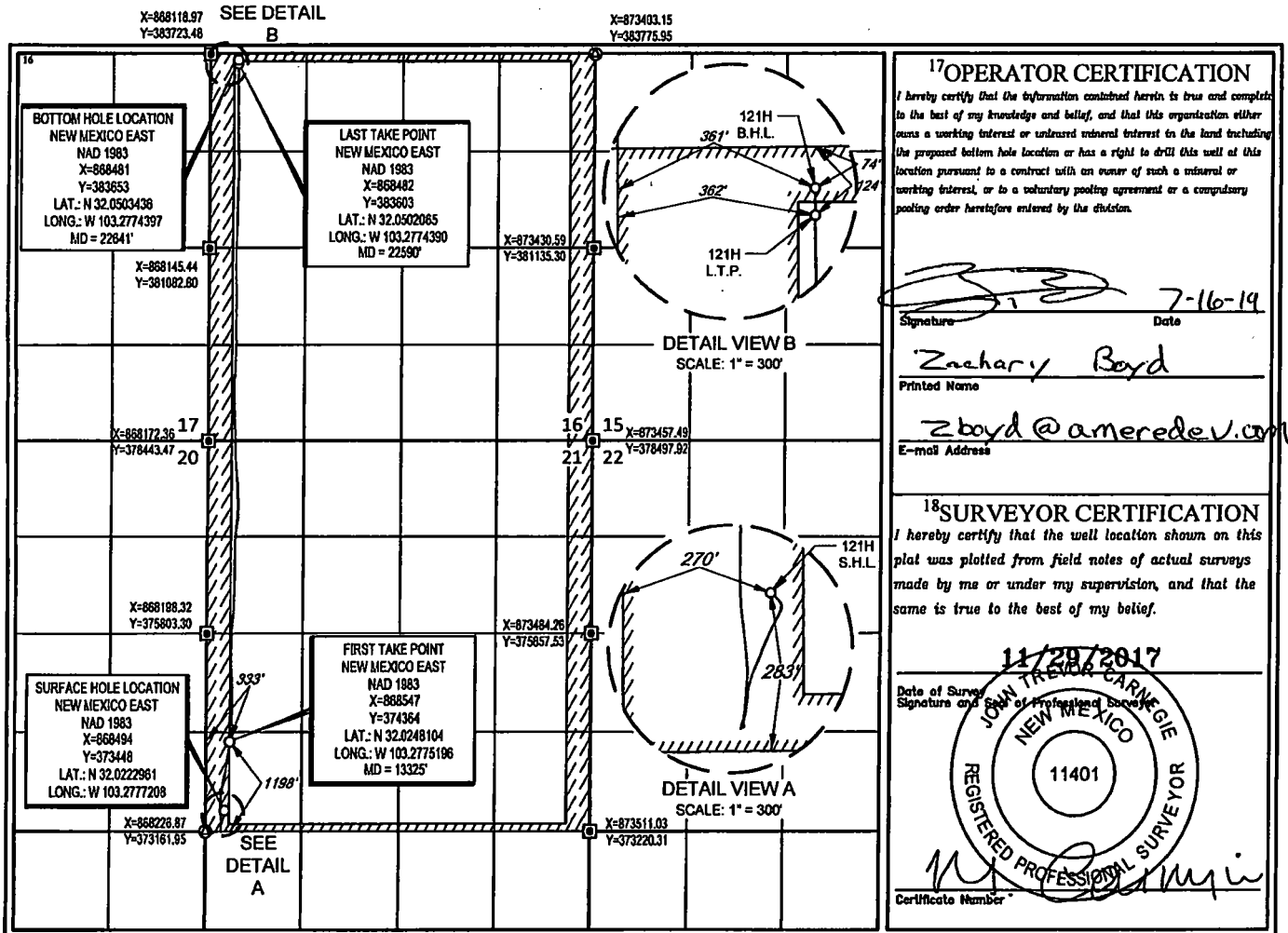
UL or lot no.	Section	Township	Range	Lot Idn	Feet from the	North/South line	Feet from the	East/West line	County
M	21	26-S	36-E	-	283'	SOUTH	270'	WEST	LEA

¹¹Bottom Hole Location If Different From Surface

UL or lot no.	Section	Township	Range	Lot Idn	Feet from the	North/South line	Feet from the	East/West line	County
D	16	26-S	36-E	-	74'	NORTH	361'	WEST	LEA

¹² Dedicated Acres	¹³ Joint or Infill	¹⁴ Consolidation Code	¹⁵ Order No.
-------------------------------	-------------------------------	----------------------------------	-------------------------

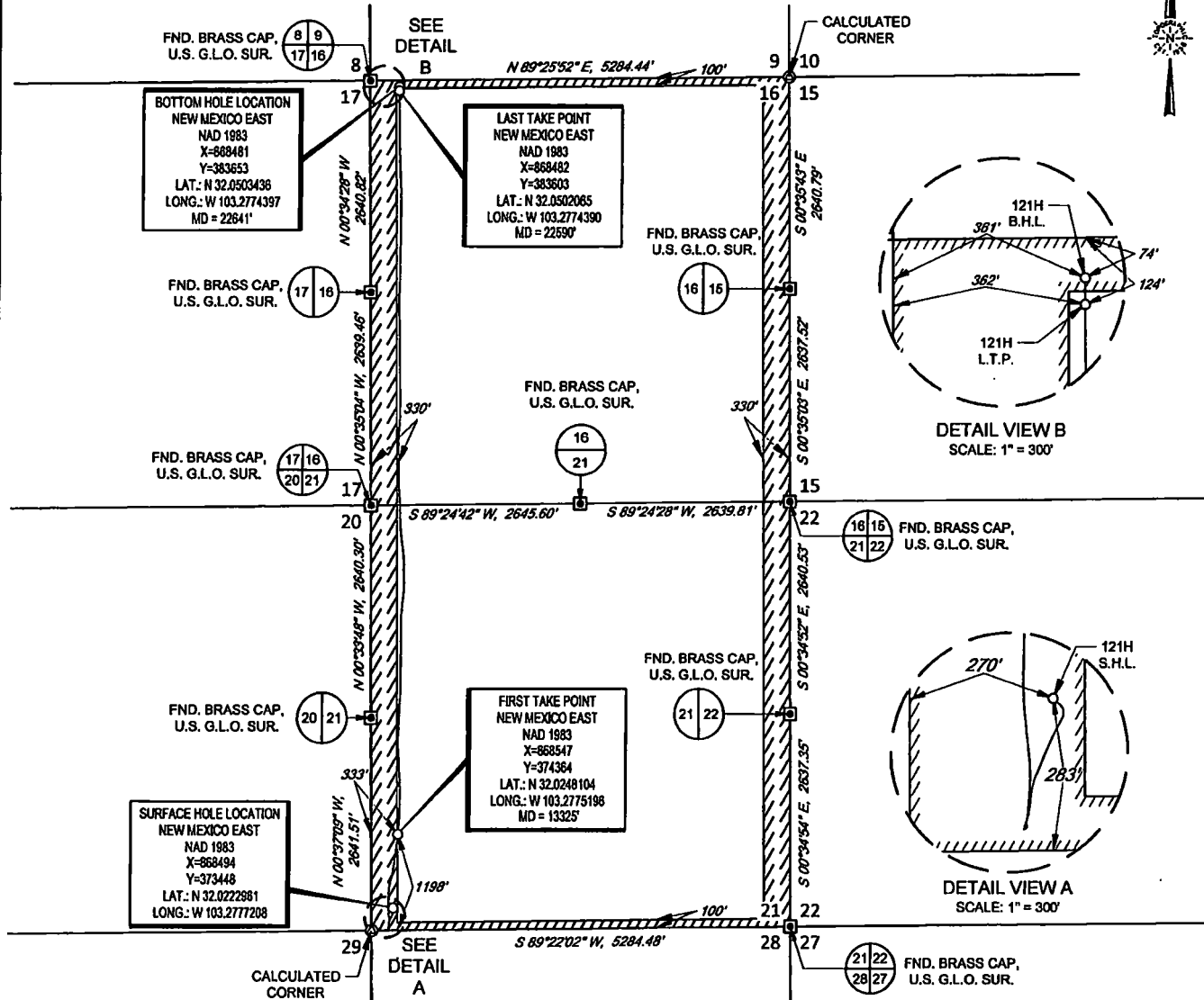
No allowable will be assigned to this completion until all interests have been consolidated or a non-standard unit has been approved by the division.



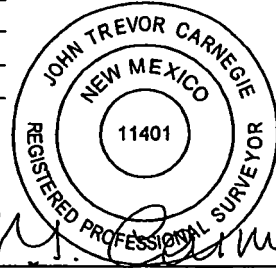
SCALE: 1" = 2000'

0' 1000' 2000'

SECTION 21, TOWNSHIP 26-S, RANGE 36-E, N.M.P.M.
LEA COUNTY, NEW MEXICO



LEASE NAME & WELL NO.: CAMELLIA FED COM 26 36 21 121H
 SECTION 21 TWP 26-S RGE 36-E SURVEY N.M.P.M.
 COUNTY LEA STATE NM ELEVATION 2924'
 DESCRIPTION 283' FSL & 270' FWL



John Trevor Carnegie, P.S. No. 11401
JULY 9, 2019



TOPOGRAPHIC
LOYALTY INNOVATION LEGACY
1400 EVERMAN PARKWAY, Ste. 148 • FT. WORTH, TEXAS 76140
TELEPHONE: (817) 744-7512 • FAX: (817) 744-7548
TEXAS FIRM REGISTRATION NO. 10042504
WWW.TOPOGRAPHIC.COM

CAMELLIA FED COM 26 36 21 121H AS-COMPLETED	REVISION:
DATE: 07/09/19	
FILE: AD_CAMELLIA_FED_COM_26_36_21_121H	
DRAWN BY: IMU	
SHEET: 1 OF 1	

NOTES:
 1. ORIGINAL DOCUMENT SIZE: 8.5" X 11"
 2. ALL BEARINGS, DISTANCES, AND COORDINATE VALUES CONTAINED HEREIN ARE GRID BASED UPON THE NEW MEXICO STATE PLANE COORDINATE SYSTEM, EAST ZONE, U.S. SURVEY FEET, NORTH AMERICAN DATUM 1983.
 3. THIS WELL LOCATION SHOWN HEREON HAS BEEN SURVEYED ON THE GROUND UNDER MY SUPERVISION AND PREPARED ACCORDING TO THE EVIDENCE FOUND AT THE TIME OF SURVEY, AND DATA PROVIDED BY AMEREDEV OPERATING, LLC. THIS CERTIFICATION IS MADE AND LIMITED TO THOSE PERSONS OR ENTITIES SHOWN ON THE FACE OF THIS PLAT AND IS NON-TRANSFERABLE. THIS SURVEY IS CERTIFIED FOR THIS TRANSACTION ONLY.