

UNITED STATES
DEPARTMENT OF THE INTERIOR
BUREAU OF LAND MANAGEMENT

APPLICATION FOR PERMIT TO DRILL OR REENTER

FORM APPROVED
OMB No. 1004-0137
Expires: January 31, 2018

HOBBS OCD
NOV 04 2019
RECEIVED

1a. Type of work: <input checked="" type="checkbox"/> DRILL <input type="checkbox"/> REENTER		5. Lease Serial No. NMLC0061873B
1b. Type of Well: <input checked="" type="checkbox"/> Oil Well <input type="checkbox"/> Gas Well <input type="checkbox"/> Other		6. If Indian, Allottee or Tribe Name
1c. Type of Completion: <input type="checkbox"/> Hydraulic Fracturing <input checked="" type="checkbox"/> Single Zone <input type="checkbox"/> Multiple Zone		7. If Unit or CA Agreement, Name and No.
2. Name of Operator DEVON ENERGY PRODUCTION COMPANY LP (8137)		8. Lease Name and Well No. CHINCOTEAGUE 8-32 FED ST COM 524H (326213)
3a. Address 333 West Sheridan Avenue Oklahoma City OK 73102	3b. Phone No. (include area code) (800)583-3866	9. API Well No. 70-025-46476 (97899)
4. Location of Well (Report location clearly and in accordance with any State requirements. *) At surface SENE / 2313 FNL / 725 FEL / LAT 32.1457844 / LONG -103.6909531 At proposed prod. zone NENE / 20 FNL / 1040 FEL / LAT 32.1811391 / LONG -103.6915125		10. Field and Pool, or Exploratory FED WC-025-G-06 S253206M / BONE SF
11. Sec., T. R. M. or Blk. and Survey or Area SEC 8 / T25S / R32E / NMP		12. County or Parish LEA
13. State NM		
14. Distance in miles and direction from nearest town or post office*		
15. Distance from proposed* location to nearest property or lease line, ft. (Also to nearest drig. unit line, if any) 725 feet	16. No of acres in lease 1759.31	17. Spacing Unit dedicated to this well 800
18. Distance from proposed location* to nearest well, drilling, completed, applied for, on this lease, ft. 1057 feet	19. Proposed Depth 10200 feet / 23073 feet	20. BLM/BIA Bond No. in file FED: NMB000801
21. Elevations (Show whether DF, KDB, RT, GL, etc.) 3438 feet	22. Approximate date work will start* 04/06/2020	23. Estimated duration 45 days
24. Attachments		

The following, completed in accordance with the requirements of Onshore Oil and Gas Order No. 1, and the Hydraulic Fracturing rule per 43 CFR 3162.3-3 (as applicable)

- | | |
|--|---|
| 1. Well plat certified by a registered surveyor. | 4. Bond to cover the operations unless covered by an existing bond on file (see Item 20 above). |
| 2. A Drilling Plan. | 5. Operator certification. |
| 3. A Surface Use Plan (if the location is on National Forest System Lands, the SUPO must be filed with the appropriate Forest Service Office). | 6. Such other site specific information and/or plans as may be requested by the BLM. |

25. Signature (Electronic Submission)	Name (Printed/Typed) Jenny Harms / Ph: (405)524-4902	Date 04/10/2019
Title Regulatory Compliance Professional		
Approved by (Signature) (Electronic Submission)	Name (Printed/Typed) Cody Layton / Ph: (575)234-5959	Date 10/24/2019
Title Assistant Field Manager Lands & Minerals		
Office CARLSBAD		

Application approval does not warrant or certify that the applicant holds legal or equitable title to those rights in the subject lease which would entitle the applicant to conduct operations thereon.
Conditions of approval, if any, are attached.

Title 18 U.S.C. Section 1001 and Title 43 U.S.C. Section 1212, make it a crime for any person knowingly and willfully to make to any department or agency of the United States any false, fictitious or fraudulent statements or representations as to any matter within its jurisdiction.

62P Rec 11/04/19

APPROVED WITH CONDITIONS
Approval Date: 10/24/2019

K 11/05/19

PECOS DISTRICT DRILLING CONDITIONS OF APPROVAL

OPERATOR'S NAME:	Devon Energy Production Company LP
LEASE NO.:	NMLC0061873B
WELL NAME & NO.:	Chincoteague 8-32 Fed St Com 524H
SURFACE HOLE FOOTAGE:	2313'/N & 725'/E
BOTTOM HOLE FOOTAGE:	20'/N & 1040'/E
LOCATION:	Section 8, T.25 S., R.32 E., NMPM
COUNTY:	Lea County, New Mexico

COA

H2S	<input checked="" type="radio"/> Yes	<input type="radio"/> No	
Potash	<input checked="" type="radio"/> None	<input type="radio"/> Secretary	<input type="radio"/> R-111-P
Cave/Karst Potential	<input checked="" type="radio"/> Low	<input type="radio"/> Medium	<input type="radio"/> High
Cave/Karst Potential	<input type="radio"/> Critical		
Variance	<input type="radio"/> None	<input checked="" type="radio"/> Flex Hose	<input type="radio"/> Other
Wellhead	<input type="radio"/> Conventional	<input type="radio"/> Multibowl	<input checked="" type="radio"/> Both
Other	<input type="checkbox"/> 4 String Area	<input type="checkbox"/> Capitan Reef	<input type="checkbox"/> WIPP
Other	<input checked="" type="checkbox"/> Fluid Filled	<input checked="" type="checkbox"/> Cement Squeeze	<input type="checkbox"/> Pilot Hole
Special Requirements	<input type="checkbox"/> Water Disposal	<input checked="" type="checkbox"/> COM	<input type="checkbox"/> Unit

A. HYDROGEN SULFIDE

Hydrogen Sulfide (H2S) monitors shall be installed prior to drilling out the surface shoe. If H2S is detected in concentrations greater than 100 ppm, the Hydrogen Sulfide area shall meet Onshore Order 6 requirements, which includes equipment and personnel/public protection items. If Hydrogen Sulfide is encountered, provide measured values and formations to the BLM.

B. CASING

1. The 13-3/8 inch surface casing shall be set at approximately **830 feet** (a minimum of **25 feet (Lea County)** into the Rustler Anhydrite and above the salt) and cemented to the surface.
 - a. If cement does not circulate to the surface, the appropriate BLM office shall be notified and a temperature survey utilizing an electronic type temperature survey with surface log readout will be used or a cement bond log shall be run to verify the top of the cement. Temperature survey will be run a minimum of six hours after pumping cement and ideally between 8-10 hours after completing the cement job.
 - b. Wait on cement (WOC) time for a primary cement job will be a minimum of **8**

hours or 500 pounds compressive strength, whichever is greater. (This is to include the lead cement)

- c. Wait on cement (WOC) time for a remedial job will be a minimum of 4 hours after bringing cement to surface or 500 pounds compressive strength, whichever is greater.
- d. If cement falls back, remedial cementing will be done prior to drilling out that string.

Intermediate casing must be kept fluid filled to meet BLM minimum collapse requirement.

2. The minimum required fill of cement behind the 9-5/8 inch intermediate casing shall be set at approximately 4601 feet is:

Option 1 (Single Stage):

- Cement to surface. If cement does not circulate see B.1.a, c-d above.

Option 2:

Operator has proposed a DV tool, the depth may be adjusted as long as the cement is changed proportionally. The DV tool may be cancelled if cement circulates to surface on the first stage.

- a. First stage to DV tool: Cement to circulate. If cement does not circulate off the DV tool, contact the appropriate BLM office before proceeding with second stage cement job.
- b. Second stage above DV tool:
 - Cement to surface. If cement does not circulate, contact the appropriate BLM office.

Operator has proposed to pump down 13-3/8" X 9-5/8" annulus. Operator must run a CBL from TD of the 9-5/8" casing to surface. Submit results to BLM.

3. The minimum required fill of cement behind the 5-1/2 inch production casing is:
 - Cement should tie-back at least 200 feet into previous casing string. Operator shall provide method of verification.
Cement excess is less than 25%, more cement might be required.

C. PRESSURE CONTROL

1. Variance approved to use flex line from BOP to choke manifold. Manufacturer's specification to be readily available. No external damage to flex line. Flex line to be installed as straight as possible (no hard bends).'
- 2.

Option 1:

- a. Minimum working pressure of the blowout preventer (BOP) and related equipment (BOPE) required for drilling below the surface casing shoe shall be **2000 (2M)** psi.
- b. Minimum working pressure of the blowout preventer (BOP) and related equipment (BOPE) required for drilling below the intermediate casing shoe shall be **3000 (3M)** psi.

Option 2:

1. Operator has proposed a multi-bowl wellhead assembly. This assembly will only be tested when installed on the surface casing. Minimum working pressure of the blowout preventer (BOP) and related equipment (BOPE) required for drilling below the surface casing shoe shall be **3000 (3M)** psi.
 - a. Wellhead shall be installed by manufacturer's representatives, submit documentation with subsequent sundry.
 - b. If the welding is performed by a third party, the manufacturer's representative shall monitor the temperature to verify that it does not exceed the maximum temperature of the seal.
 - c. Manufacturer representative shall install the test plug for the initial BOP test.
 - d. If the cement does not circulate and one inch operations would have been possible with a standard wellhead, the well head shall be cut off, cementing operations performed and another wellhead installed.
 - e. Whenever any seal subject to test pressure is broken, all the tests in OOGO2.III.A.2.i must be followed.

D. SPECIAL REQUIREMENT (S)

Communitization Agreement

- The operator will submit a Communitization Agreement to the Carlsbad Field Office, 620 E Greene St. Carlsbad, New Mexico 88220, at least 90 days before the anticipated date of first production from a well subject to a spacing order issued by the New Mexico Oil Conservation Division. The Communitization Agreement will include the signatures of all working interest owners in all Federal and Indian leases

subject to the Communitization Agreement (i.e., operating rights owners and lessees of record), or certification that the operator has obtained the written signatures of all such owners and will make those signatures available to the BLM immediately upon request.

- If the operator does not comply with this condition of approval, the BLM may take enforcement actions that include, but are not limited to, those specified in 43 CFR 3163.1.
- In addition, the well sign shall include the surface and bottom hole lease numbers. When the Communitization Agreement number is known, it shall also be on the sign.

GENERAL REQUIREMENTS

The BLM is to be notified in advance for a representative to witness:

- a. Spudding well (minimum of 24 hours)
- b. Setting and/or Cementing of all casing strings (minimum of 4 hours)
- c. BOPE tests (minimum of 4 hours)

☒ Eddy County

Call the Carlsbad Field Office, 620 East Greene St., Carlsbad, NM 88220,
(575) 361-2822

☒ Lea County

Call the Hobbs Field Station, 414 West Taylor, Hobbs NM 88240, (575)
393-3612

1. Unless the production casing has been run and cemented or the well has been properly plugged, the drilling rig shall not be removed from over the hole without prior approval.
 - a. In the event the operator has proposed to drill multiple wells utilizing a skid/walking rig. Operator shall secure the wellbore on the current well, after installing and testing the wellhead, by installing a blind flange of like pressure rating to the wellhead and a pressure gauge that can be monitored while drilling is performed on the other well(s).
 - b. When the operator proposes to set surface casing with Spudder Rig
 - Notify the BLM when moving in and removing the Spudder Rig.
 - Notify the BLM when moving in the 2nd Rig. Rig to be moved in within 90 days of notification that Spudder Rig has left the location.
 - BOP/BOPE test to be conducted per Onshore Oil and Gas Order No. 2 as soon as 2nd Rig is rigged up on well.
2. Floor controls are required for 3M or Greater systems. These controls will be on the rig floor, unobstructed, readily accessible to the driller and will be operational at all times during drilling and/or completion activities. Rig floor is defined as the area immediately around the rotary table; the area immediately above the substructure on which the draw works are located, this does not include the dog house or stairway area.
3. The record of the drilling rate along with the GR/N well log run from TD to surface (horizontal well – vertical portion of hole) shall be submitted to the BLM office as well as all other logs run on the borehole 30 days from completion. If available, a digital copy of the logs is to be submitted in addition to the paper copies. The Rustler top and top and bottom of Salt are to be recorded on the Completion Report.

A. CASING

1. Changes to the approved APD casing program need prior approval if the items substituted are of lesser grade or different casing size or are Non-API. The Operator can exchange the components of the proposal with that of superior strength (i.e. changing from J-55 to N-80, or from 36# to 40#). Changes to the approved cement program need prior approval if the altered cement plan has less volume or strength or if the changes are substantial (i.e. Multistage tool, ECP, etc.). The initial wellhead installed on the well will remain on the well with spools used as needed.
2. Wait on cement (WOC) for Potash Areas: After cementing but before commencing any tests, the casing string shall stand cemented under pressure until both of the following conditions have been met: 1) cement reaches a minimum compressive strength of 500 psi for all cement blends, 2) until cement has been in place at least 24 hours. WOC time will be recorded in the driller's log. The casing integrity test can be done (prior to the cement setting up) immediately after bumping the plug.
3. Wait on cement (WOC) for Water Basin: After cementing but before commencing any tests, the casing string shall stand cemented under pressure until both of the following conditions have been met: 1) cement reaches a minimum compressive strength of 500 psi at the shoe, 2) until cement has been in place at least 8 hours. WOC time will be recorded in the driller's log. See individual casing strings for details regarding lead cement slurry requirements. The casing integrity test can be done (prior to the cement setting up) immediately after bumping the plug.
4. Provide compressive strengths including hours to reach required 500 pounds compressive strength prior to cementing each casing string. Have well specific cement details onsite prior to pumping the cement for each casing string.
5. No pea gravel permitted for remedial or fall back remedial without prior authorization from the BLM engineer.
6. On that portion of any well approved for a 5M BOPE system or greater, a pressure integrity test of each casing shoe shall be performed. Formation at the shoe shall be tested to a minimum of the mud weight equivalent anticipated to control the formation pressure to the next casing depth or at total depth of the well. This test shall be performed before drilling more than 20 feet of new hole.
7. If hardband drill pipe is rotated inside casing, returns will be monitored for metal. If metal is found in samples, drill pipe will be pulled and rubber protectors which have a larger diameter than the tool joints of the drill pipe will be installed prior to continuing drilling operations.
8. Whenever a casing string is cemented in the R-111-P potash area, the NMOCD requirements shall be followed.

B. PRESSURE CONTROL

1. All blowout preventer (BOP) and related equipment (BOPE) shall comply with well control requirements as described in Onshore Oil and Gas Order No. 2 and API RP 53 Sec. 17.
2. If a variance is approved for a flexible hose to be installed from the BOP to the choke manifold, the following requirements apply: The flex line must meet the requirements of API 16C. Check condition of flexible line from BOP to choke manifold, replace if exterior is damaged or if line fails test. Line to be as straight as possible with no hard bends and is to be anchored according to Manufacturer's requirements. The flexible hose can be exchanged with a hose of equal size and equal or greater pressure rating. Anchor requirements, specification sheet and hydrostatic pressure test certification matching the hose in service, to be onsite for review. These documents shall be posted in the company man's trailer and on the rig floor.
3. 5M or higher system requires an HCR valve, remote kill line and annular to match. The remote kill line is to be installed prior to testing the system and tested to stack pressure.
4. If the operator has proposed a multi-bowl wellhead assembly in the APD. The following requirements must be met:
 - a. Wellhead shall be installed by manufacturer's representatives, submit documentation with subsequent sundry.
 - b. If the welding is performed by a third party, the manufacturer's representative shall monitor the temperature to verify that it does not exceed the maximum temperature of the seal.
 - c. Manufacturer representative shall install the test plug for the initial BOP test.
 - d. Whenever any seal subject to test pressure is broken, all the tests in OOGO2.III.A.2.i must be followed.
 - e. If the cement does not circulate and one inch operations would have been possible with a standard wellhead, the well head shall be cut off, cementing operations performed and another wellhead installed.
5. The appropriate BLM office shall be notified a minimum of 4 hours in advance for a representative to witness the tests.
 - a. In a water basin, for all casing strings utilizing slips, these are to be set as soon as the crew and rig are ready and any fallback cement remediation has been done. The casing cut-off and BOP installation can be initiated four hours after installing the slips, which will be approximately six hours after bumping the plug. For those casing strings not using slips, the minimum wait time before cut-off is eight hours after bumping the plug. BOP/BOPE testing can begin after cut-off or once cement reaches 500 psi compressive strength (including lead when specified), whichever is greater. However, if the float does not

hold, cut-off cannot be initiated until cement reaches 500 psi compressive strength (including lead when specified).

- b. In potash areas, for all casing strings utilizing slips, these are to be set as soon as the crew and rig are ready and any fallback cement remediation has been done. For all casing strings, casing cut-off and BOP installation can be initiated at twelve hours after bumping the plug. However, **no tests** shall commence until the cement has had a minimum of 24 hours setup time, except the casing pressure test can be initiated immediately after bumping the plug (only applies to single stage cement jobs).
- c. The tests shall be done by an independent service company utilizing a test plug not a cup or J-packer. The operator also has the option of utilizing an independent tester to test without a plug (i.e. against the casing) pursuant to Onshore Order 2 with the pressure not to exceed 70% of the burst rating for the casing. Any test against the casing must meet the WOC time for water basin (8 hours) or potash (24 hours) or 500 pounds compressive strength, whichever is greater, prior to initiating the test (see casing segment as lead cement may be critical item).
- d. The test shall be run on a 5000 psi chart for a 2-3M BOP/BOP, on a 10000 psi chart for a 5M BOP/BOPE and on a 15000 psi chart for a 10M BOP/BOPE. If a linear chart is used, it shall be a one hour chart. A circular chart shall have a maximum 2 hour clock. If a twelve hour or twenty-four hour chart is used, tester shall make a notation that it is run with a two hour clock.
- e. The results of the test shall be reported to the appropriate BLM office.
- f. All tests are required to be recorded on a calibrated test chart. A copy of the BOP/BOPE test chart and a copy of independent service company test will be submitted to the appropriate BLM office.
- g. The BOP/BOPE test shall include a low pressure test from 250 to 300 psi. The test will be held for a minimum of 10 minutes if test is done with a test plug and 30 minutes without a test plug. This test shall be performed prior to the test at full stack pressure.
- h. BOP/BOPE must be tested by an independent service company within 500 feet of the top of the Wolfcamp formation if the time between the setting of the intermediate casing and reaching this depth exceeds 20 days. This test does not exclude the test prior to drilling out the casing shoe as per Onshore Order No. 2.

C. DRILLING MUD

Mud system monitoring equipment, with derrick floor indicators and visual and audio alarms, shall be operating before drilling into the Wolfcamp formation, and shall be used until production casing is run and cemented.

D. WASTE MATERIAL AND FLUIDS

All waste (i.e. drilling fluids, trash, salts, chemicals, sewage, gray water, etc.) created as a result of drilling operations and completion operations shall be safely contained and disposed of properly at a waste disposal facility. No waste material or fluid shall be disposed of on the well location or surrounding area.

Porto-johns and trash containers will be on-location during fracturing operations or any other crew-intensive operations.



U.S. Department of the Interior
BUREAU OF LAND MANAGEMENT

Operator Certification Data Report

10/24/2019

Operator Certification

I hereby certify that I, or someone under my direct supervision, have inspected the drill site and access route proposed herein; that I am familiar with the conditions which currently exist; that I have full knowledge of state and Federal laws applicable to this operation; that the statements made in this APD package are, to the best of my knowledge, true and correct; and that the work associated with the operations proposed herein will be performed in conformity with this APD package and the terms and conditions under which it is approved. I also certify that I, or the company I represent, am responsible for the operations conducted under this application. These statements are subject to the provisions of 18 U.S.C. 1001 for the filing of false statements.

NAME: Jenny Harms

Signed on: 04/09/2019

Title: Regulatory Compliance Professional

Street Address: 333 W SHERDIAN AVE

City: OKLAHOMA CITY

State: OK

Zip: 73170

Phone: (405)524-4902

Email address: RAY.VAZ@DVN.COM

Field Representative

Representative Name: Ray vaz

Street Address: 333 WEST SHERIDAN AVE

City: OKLAHOMA CITY

State: OK

Zip: 73102

Phone: (575)748-1871

Email address: ray.vaz@dvn.com



U.S. Department of the Interior
BUREAU OF LAND MANAGEMENT

Application Data Report

10/24/2019

APD ID: 10400040700

Submission Date: 04/10/2019

Operator Name: DEVON ENERGY PRODUCTION COMPANY LP

Well Name: CHINCOTEAGUE 8-32 FED ST COM

Well Number: 524H

Well Type: OIL WELL

Well Work Type: Drill

[Show Final Text](#)

Section 1 - General

APD ID: 10400040700

Tie to previous NOS?

Submission Date: 04/10/2019

BLM Office: CARLSBAD

User: Jenny Harms

Title: Regulatory Compliance
Professional

Federal/Indian APD: FED

Is the first lease penetrated for production Federal or Indian? FED

Lease number: NMLC0061873B

Lease Acres: 1759.31

Surface access agreement in place?

Allotted?

Reservation:

Agreement in place? NO

Federal or Indian agreement:

Agreement number:

Agreement name:

Keep application confidential? YES

Permitting Agent? NO

APD Operator: DEVON ENERGY PRODUCTION COMPANY LP

Operator letter of designation:

Operator Info

Operator Organization Name: DEVON ENERGY PRODUCTION COMPANY LP

Operator Address: 333 West Sheridan Avenue

Zip: 73102

Operator PO Box:

Operator City: Oklahoma City State: OK

Operator Phone: (800)583-3866

Operator Internet Address:

Section 2 - Well Information

Well in Master Development Plan? NO

Master Development Plan name:

Well in Master SUPO? NO

Master SUPO name:

Well in Master Drilling Plan? NO

Master Drilling Plan name:

Well Name: CHINCOTEAGUE 8-32 FED ST COM

Well Number: 524H

Well API Number:

Field/Pool or Exploratory? Field and Pool

Field Name: FED WC-025 G-06 S253206M

Pool Name: BONE SPRING (OIL)

Operator Name: DEVON ENERGY PRODUCTION COMPANY LP

Well Name: CHINCOTEAGUE 8-32 FED ST COM

Well Number: 524H

Is the proposed well in an area containing other mineral resources? NATURAL GAS,OIL,POTASH

Is the proposed well in a Helium production area? N

Use Existing Well Pad? NO

New surface disturbance?

Type of Well Pad: MULTIPLE WELL

Multiple Well Pad Name:

Number: 3

Well Class: HORIZONTAL

CHINCOTEAGUE 8 PAD

Number of Legs:

Well Work Type: Drill

Well Type: OIL WELL

Describe Well Type:

Well sub-Type: INFILL

Describe sub-type:

Distance to town:

Distance to nearest well: 1057 FT

Distance to lease line: 725 FT

Reservoir well spacing assigned acres Measurement: 800 Acres

Well plat: AA000213614_CHINCOTEAGUE_8_32_FSC_524H_WL_P__C102signed_20190409101258.pdf

Well work start Date: 04/06/2020

Duration: 45 DAYS

Section 3 - Well Location Table

Survey Type: RECTANGULAR

Describe Survey Type:

Datum: NAD83

Vertical Datum: NAVD88

Survey number: 7009

Reference Datum:

Wellbore	NS-Foot	NS Indicator	EW-Foot	EW Indicator	Twsp	Range	Section	Aliquot/Lot/Tract	Latitude	Longitude	County	State	Meridian	Lease Type	Lease Number	Elevation	MD	TVD	Will this well produce from this lease?
SHL Leg #1		FNL	725	FEL	25S	32E	8	Aliquot SENE	32.14578 44	- 103.6909 531	LEA	NEW MEXI CO	NEW MEXI CO	F	NMLC0 061873 B	343 8	0	0	
KOP Leg #1		FNL	104 0	FEL	25S	32E	8	Aliquot SENE	32.14515 7	- 103.6919 76	LEA	NEW MEXI CO	NEW MEXI CO	F	NMLC0 061873 B	- 618 9	964 1	962 7	
PPP Leg #1		FNL	110	FEL	25S	32E	5	Lot 1	32.16641	- 103.6916 96	LEA	NEW MEXI CO	NEW MEXI CO	F	NMNM 108969	- 676 2	177 00	102 00	

Operator Name: DEVON ENERGY PRODUCTION COMPANY LP

Well Name: CHINCOTEAGUE 8-32 FED ST COM

Well Number: 524H

Wellbore	NS-Foot	NS Indicator	EW-Foot	EW Indicator	Twsp	Range	Section	Aliquot/Lot/Tract	Latitude	Longitude	County	State	Meridian	Lease Type	Lease Number	Elevation	MD	TVD	Will this well produce from this lease?
PPP Leg #1		FNL	110	FEL	25S	32E	5	Lot 1	32.16641	- 103.691696	LEA	NEW MEXICO	NEW MEXICO	F	NMNM 108969	- 6762	17700	10200	
PPP Leg #1		FNL	110	FEL	25S	32E	5	Lot 1	32.16641	- 103.691696	LEA	NEW MEXICO	NEW MEXICO	F	NMNM 108969	- 6762	17700	10200	
PPP Leg #1		FSL	1040	FEL	25S	32E	5	Aliquot SESE	32.152148	- 103.691886	LEA	NEW MEXICO	NEW MEXICO	F	NMLC0 061863A	- 6762	12511	10200	
PPP Leg #1		FSL	1040	FEL	25S	32E	5	Aliquot SESE	32.152148	- 103.691886	LEA	NEW MEXICO	NEW MEXICO	F	NMLC0 061863A	- 6762	12511	10200	
PPP Leg #1		FNL	110	FEL	25S	32E	5	Lot 1	32.16641	- 103.691696	LEA	NEW MEXICO	NEW MEXICO	F	NMNM 108969	- 6762	17700	10200	
PPP Leg #1		FNL	110	FEL	25S	32E	5	Lot 1	32.16641	- 103.691696	LEA	NEW MEXICO	NEW MEXICO	F	NMNM 108969	- 6762	17700	10200	
PPP Leg #1		FSL	1040	FEL	25S	32E	5	Aliquot SESE	32.152148	- 103.691886	LEA	NEW MEXICO	NEW MEXICO	F	NMLC0 061863A	- 6762	12511	10200	
PPP Leg #1		FNL	1040	FEL	25S	32E	8	Aliquot SENE	32.1451469	- 103.6919681	LEA	NEW MEXICO	NEW MEXICO	F	NMLC0 061873B	- 6189	9641	9627	
PPP Leg #1		FSL	1040	FEL	25S	32E	5	Aliquot SESE	32.152148	- 103.691886	LEA	NEW MEXICO	NEW MEXICO	F	NMLC0 061863A	- 6762	12511	10200	
PPP Leg #1		FSL	1040	FEL	25S	32E	5	Aliquot SESE	32.152148	- 103.691886	LEA	NEW MEXICO	NEW MEXICO	F	NMLC0 061863A	- 6762	12511	10200	
PPP Leg #1		FNL	1040	FEL	25S	32E	8	Aliquot SENE	32.1451469	- 103.6919681	LEA	NEW MEXICO	NEW MEXICO	F	NMLC0 061873B	- 6189	9641	9627	
PPP Leg #1		FNL	1040	FEL	25S	32E	8	Aliquot SENE	32.1451469	- 103.6919681	LEA	NEW MEXICO	NEW MEXICO	F	NMLC0 061873B	- 6189	9641	9627	
PPP Leg #1		FNL	1040	FEL	25S	32E	8	Aliquot SENE	32.1451469	- 103.6919681	LEA	NEW MEXICO	NEW MEXICO	F	NMLC0 061873B	- 6189	9641	9627	

Operator Name: DEVON ENERGY PRODUCTION COMPANY LP

Well Name: CHINCOTEAGUE 8-32 FED ST COM

Well Number: 524H

Wellbore	NS-Foot	NS Indicator	EW-Foot	EW Indicator	Twsp	Range	Section	Aliquot/Lot/Tract	Latitude	Longitude	County	State	Meridian	Lease Type	Lease Number	Elevation	MD	TVD	Will this well produce from this lease?
PPP Leg #1		FNL	1040	FEL	25S	32E	8	Aliquot SENE	32.1451469	- 103.6919681	LEA	NEW MEXICO	NEW MEXICO	F	NMLC0061873B	- 6189	9641	9627	
EXIT Leg #1		FNL	1040	FEL	24S	32E	32	Aliquot NENE	32.1809192	- 103.6915122	LEA	NEW MEXICO	NEW MEXICO	S	STATE	- 6762	22993	10200	
BHL Leg #1		FNL	1040	FEL	24S	32E	32	Aliquot NENE	32.1811391	- 103.6915125	LEA	NEW MEXICO	NEW MEXICO	S	STATE	- 6762	23073	10200	



U.S. Department of the Interior
BUREAU OF LAND MANAGEMENT

Drilling Plan Data Report

10/24/2019

APD ID: 10400040700

Submission Date: 04/10/2019

Operator Name: DEVON ENERGY PRODUCTION COMPANY LP

Well Name: CHINCOTEAGUE 8-32 FED ST COM

Well Number: 524H

[Show Final Text](#)

Well Type: OIL WELL

Well Work Type: Drill

Section 1 - Geologic Formations

Formation ID	Formation Name	Elevation	True Vertical Depth	Measured Depth	Lithologies	Mineral Resources	Producing Formation
1	UNKNOWN	3438	0	0	OTHER, ALLUVIUM : Surface	NONE	N
2	RUSTLER	2713	725	725	SANDSTONE	NONE	N
3	SALADO	2353	1085	1085	SALT	NONE	N
4	BASE OF SALT	-962	4400	4400	SALT	NONE	N
5	DELAWARE	-1097	4535	4535	SANDSTONE	NATURAL GAS,OIL	N
6	BONE SPRING	-5972	9410	9410	SANDSTONE	NATURAL GAS,OIL	N
7	BONE SPRING 2ND	-6562	10000	10000	SANDSTONE	NATURAL GAS,OIL	Y

Section 2 - Blowout Prevention

Pressure Rating (PSI): 5M

Rating Depth: 4635

Equipment: BOP/BOPE will be installed per Onshore Oil & Gas Order #2 requirements prior to drilling below surface casing, a BOP/BOPE system with the above minimum rating will be installed on the wellhead system. BOP/BOPE will be tested by an independent service company per Onshore Oil & Gas Order #2 requirements and MASP (Maximum Anticipated Surface Pressure) calculations. If the system is upgraded, all the components installed will be functional and tested.

Requesting Variance? YES

Variance request: A variance is requested for the use of a flexible choke line from the BOP stack to the choke manifold. See attached for specs for hydrostatic test chart.

Testing Procedure: A multibowl wellhead may be used. The BOP will be tested per Onshore Order #2 after installation on the surface casing which will cover testing requirements for a maximum of 30 days. If any seal subject to test pressure is broken the system must be tested.

Choke Diagram Attachment:

5M_BOPE__CK_20190406162412.pdf

BOP Diagram Attachment:

5M_BOPE__CK_20190408073802.pdf

Operator Name: DEVON ENERGY PRODUCTION COMPANY LP

Well Name: CHINCOTEAGUE 8-32 FED ST COM

Well Number: 524H

Pressure Rating (PSI): 5M

Rating Depth: 10200

Equipment: BOP/BOPE will be installed per Onshore Oil & Gas Order #2 requirements prior to drilling below intermediate casing, a BOP/BOPE system with the above minimum rating will be installed on the wellhead system.

BOP/BOPE will be tested by an independent service company per Onshore Oil & Gas Order #2 requirements and MASP (Maximum Anticipated Surface Pressure) calculations. If the system is upgraded, all the components installed will be functional and tested.

Requesting Variance? YES

Variance request: A variance is requested for the use of a flexible choke line from the BOP stack to the choke manifold. See attached for specs for hydrostatic test chart.

Testing Procedure: A multibowl wellhead may be used. The BOP will be tested per Onshore Order #2 after installation on the surface casing which will cover testing requirements for a maximum of 30 days. If any seal subject to test pressure is broken the system must be tested.

Choke Diagram Attachment:

5M_BOPE__CK_20190406162442.pdf

BOP Diagram Attachment:

5M_BOPE__CK_20190406162458.pdf

Section 3 - Casing

Casing ID	String Type	Hole Size	Csg Size	Condition	Standard	Tapered String	Top Set MD	Bottom Set MD	Top Set TVD	Bottom Set TVD	Top Set MSL	Bottom Set MSL	Calculated casing length MD	Grade	Weight	Joint Type	Collapse SF	Burst SF	Joint SF Type	Joint SF	Body SF Type	Body SF
1	SURFACE	17.5	13.375	NEW	API	N	0	750	0	750	-6965	-8031	750	H-40	48	OTHER - BTC	1.125	1	BUOY	1.6	BUOY	1.6
2	INTERMEDIATE	12.25	9.625	NEW	API	N	0	4635	0	4635	-6965	-12965	4635	J-55	40	OTHER - BTC	1.125	1	BUOY	1.6	BUOY	1.6
3	PRODUCTION	8.75	5.5	NEW	API	N	0	23073	0	10200	-6965	-17514	23073	P-110	17	OTHER - BTC	1.125	1	BUOY	1.6	BUOY	1.6

Casing Attachments

Operator Name: DEVON ENERGY PRODUCTION COMPANY LP

Well Name: CHINCOTEAGUE 8-32 FED ST COM

Well Number: 524H

Casing Attachments

Casing ID: 1 **String Type:** SURFACE

Inspection Document:

Spec Document:

Tapered String Spec:

Casing Design Assumptions and Worksheet(s):

Surf_Csg_Ass_20190406163130.pdf

Casing ID: 2 **String Type:** INTERMEDIATE

Inspection Document:

Spec Document:

Tapered String Spec:

Casing Design Assumptions and Worksheet(s):

Int_Csg_Ass_20190406163257.pdf

Casing ID: 3 **String Type:** PRODUCTION

Inspection Document:

Spec Document:

Tapered String Spec:

Casing Design Assumptions and Worksheet(s):

Prod_Csg_Ass_20190406163405.pdf

Section 4 - Cement

Operator Name: DEVON ENERGY PRODUCTION COMPANY LP

Well Name: CHINCOTEAGUE 8-32 FED ST COM

Well Number: 524H

String Type	Lead/Tail	Stage Tool Depth	Top MD	Bottom MD	Quantity(sx)	Yield	Density	Cu Ft	Excess%	Cement type	Additives
SURFACE	Lead					1.44					

INTERMEDIATE	Lead					3.27					
INTERMEDIATE	Tail										
PRODUCTION	Lead					3.27					
PRODUCTION	Tail										

Section 5 - Circulating Medium

Mud System Type: Closed

Will an air or gas system be Used? NO

Description of the equipment for the circulating system in accordance with Onshore Order #2:

Diagram of the equipment for the circulating system in accordance with Onshore Order #2:

Describe what will be on location to control well or mitigate other conditions: Sufficient mud materials to maintain mud properties and meet minimum lost circulation and weight increase requirements will be kept on location at all times.

Describe the mud monitoring system utilized: PVT/Pason/Visual Monitoring

Circulating Medium Table

Top Depth	Bottom Depth	Mud Type	Min Weight (lbs/gal)	Max Weight (lbs/gal)	Density (lbs/cu ft)	Gel Strength (lbs/100 sqft)	PH	Viscosity (CP)	Salinity (ppm)	Filtration (cc)	Additional Characteristics
4635	10200	WATER-BASED MUD	8.5	9				2			

Operator Name: DEVON ENERGY PRODUCTION COMPANY LP

Well Name: CHINCOTEAGUE 8-32 FED ST COM

Well Number: 524H

Top Depth	Bottom Depth	Mud Type	Min Weight (lbs/gal)	Max Weight (lbs/gal)	Density (lbs/cu ft)	Gel Strength (lbs/100 sqft)	PH	Viscosity (CP)	Salinity (ppm)	Filtration (cc)	Additional Characteristics
750	1020 0	OTHER : BRINE	10	10.5				2			
0	1020 0	OTHER : FRESH WATER GEL	8.5	9							

Section 6 - Test, Logging, Coring

List of production tests including testing procedures, equipment and safety measures:

Will run GRMWD from TD to from KOP. Cement bond logs will be run in vertical to determine top of cement. Stated logs run will be in the completion report and submitted to the BLM.

List of open and cased hole logs run in the well:

CALIPER,CBL,DS,GR,MUDLOG

Coring operation description for the well:

N/A

Section 7 - Pressure

Anticipated Bottom Hole Pressure: 4774

Anticipated Surface Pressure: 2530

Anticipated Bottom Hole Temperature(F): 143

Anticipated abnormal pressures, temperatures, or potential geologic hazards? NO

Describe:

Contingency Plans geohazards description:

Contingency Plans geohazards attachment:

Hydrogen Sulfide drilling operations plan required? YES

Hydrogen sulfide drilling operations plan:

Chincoteague_8_32_Fed_State_Com_524H_H2S_PLAN_20190409110010.pdf

Operator Name: DEVON ENERGY PRODUCTION COMPANY LP

Well Name: CHINCOTEAGUE 8-32 FED ST COM

Well Number: 524H

Section 8 - Other Information

Proposed horizontal/directional/multi-lateral plan submission:

Chincoteague_8_32_Fed_State_Com_524H_Permit_Plan_1_20190409110109.pdf

Devon_Chincoteague_8_32_Fed_State_Com_524H_AC_Report_Permit_Plan_1_20190409110110.pdf

Devon_Chincoteague_8_32_Fed_State_Com_524H_Permit_Plan_1_20190409110111.pdf

Devon_Chincoteague_8_32_Fed_State_Com_524H_Plot_Permit_Plan_1_20190409110111.pdf

Other proposed operations facets description:

Multi-Bowl Verbiage 5M

Multi-Bowl Wellhead 5M

Closed-Loop Design Plan

Gas Capture Plan

Spudder Rig

Other proposed operations facets attachment:

MB_Verb_5M_20190314132649.pdf

MB_Wellhd_5M_20190314132650.pdf

Spudder_Rig_Info_20190314132650.pdf

Clsd_Loop_20190314132649.pdf

GasCapturePlan_CHINCO_8_CTB_3_20190409110155.pdf

Other Variance attachment:

Co_flex_20190314132801.pdf



**Devon Energy Center
333 West Sheridan Avenue
Oklahoma City, Oklahoma 73102-5015**

Hydrogen Sulfide (H₂S) Contingency Plan

For

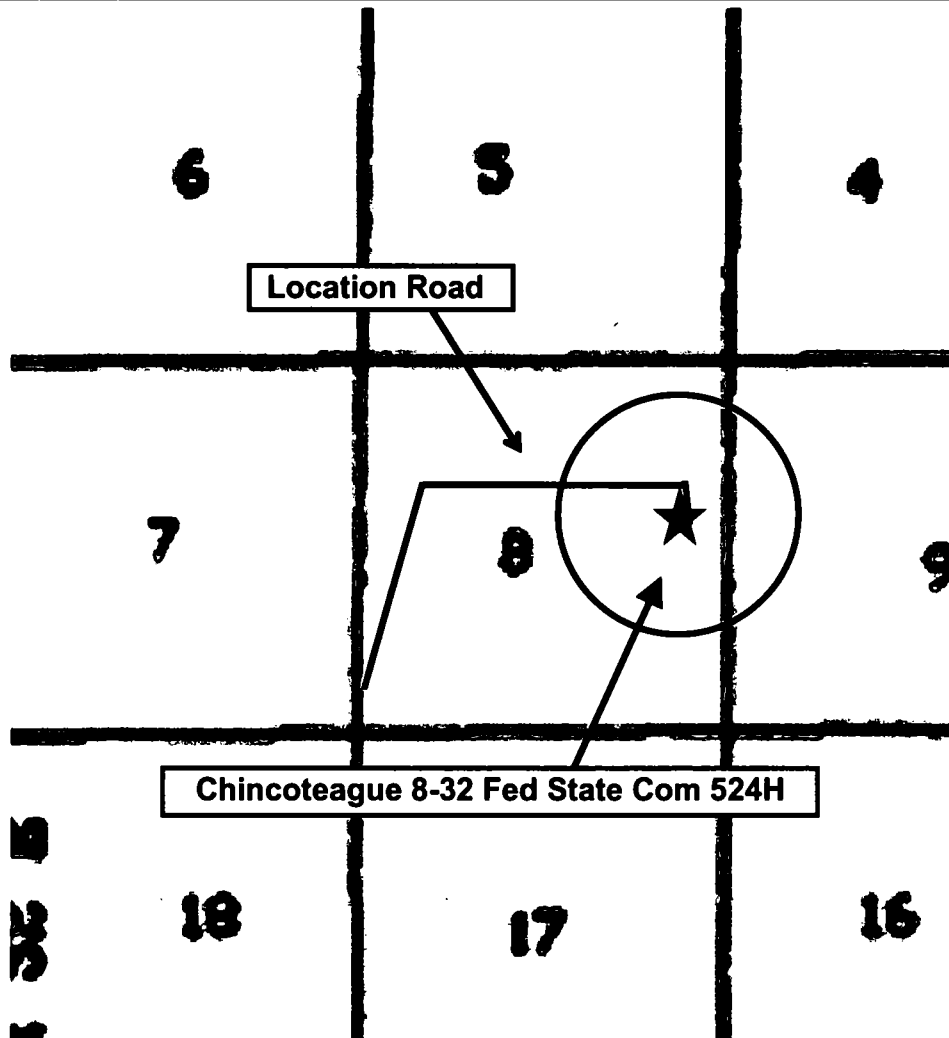
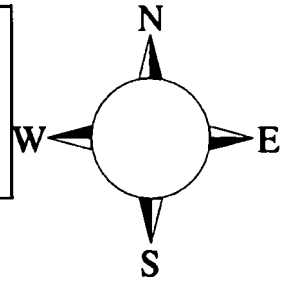
Chincoteague 8-32 Fed State Com 524H

**Sec-8 T-25S R-32E
2313' FNL & 725' FEL
LAT. = 32.1457844' N (NAD83)
LONG = 103.6909531' W**

Lea County NM

Chincoteague 8-32 Fed State Com 524H

This is an open drilling site. H₂S monitoring equipment and emergency response equipment will be used within 500' of zones known to contain H₂S, including warning signs, wind indicators and H₂S monitor.



Assumed 100 ppm ROE = 3000' (Radius of Exposure)
100 ppm H₂S concentration shall trigger activation of this plan.

Escape

Crews shall escape upwind of escaping gas in the event of an emergency release of gas. Escape can be facilitated from the location entrance road. Crews should then block the entrance to the location from the lease road so as not to allow anyone traversing into a hazardous area. The blockade should be at a safe distance outside of the ROE. There are no homes or buildings in or near the ROE.

Assumed 100 ppm ROE = 3000'

100 ppm H₂S concentration shall trigger activation of this plan.

Emergency Procedures

In the event of a release of gas containing H₂S, the first responder(s) must

- **Isolate the area and prevent entry by other persons into the 100 ppm ROE.**
- **Evacuate any public places encompassed by the 100 ppm ROE.**
- **Be equipped with H₂S monitors and air packs in order to control the release.**
- **Use the "buddy system" to ensure no injuries occur during the response**
- **Take precautions to avoid personal injury during this operation.**
- **Contact operator and/or local officials to aid in operation. See list of phone numbers attached.**
- **Have received training in the**
 - **Detection of H₂S, and**
 - **Measures for protection against the gas,**
 - **Equipment used for protection and emergency response.**

Ignition of Gas Source

Should control of the well be considered lost and ignition considered, take care to protect against exposure to Sulfur Dioxide (SO₂). Intentional ignition must be coordinated with the NMOCD and local officials. Additionally the NM State Police may become involved. NM State Police shall be the Incident Command on scene of any major release. Take care to protect downwind whenever there is an ignition of the gas

Characteristics of H₂S and SO₂

Common Name	Chemical Formula	Specific Gravity	Threshold Limit	Hazardous Limit	Lethal Concentration
Hydrogen Sulfide	H₂S	1.189 Air = 1	10 ppm	100 ppm/hr	600 ppm
Sulfur Dioxide	SO₂	2.21 Air = 1	2 ppm	N/A	1000 ppm

Contacting Authorities

Devon Energy Corp. personnel must liaison with local and state agencies to ensure a proper response to a major release. Additionally, the OCD must be notified of the release as soon as possible but no later than 4 hours. Agencies will ask for information such as type and volume of release, wind direction, location of release, etc. Be prepared with all information available. The following call list of essential and potential responders has been prepared for use during a release. Devon Energy Corp. Company response must be in coordination with the State of New Mexico's 'Hazardous Materials Emergency Response Plan' (HMER)

Hydrogen Sulfide Drilling Operation Plan

I. HYDROGEN SULFIDE (H₂S) TRAINING

All personnel, whether regularly assigned, contracted, or employed on an unscheduled basis, will receive training from a qualified instructor in the following areas prior to commencing drilling operations on this well:

1. The hazards and characteristics of hydrogen sulfide (H₂S)
2. The proper use and maintenance of personal protective equipment and life support systems.
3. The proper use of H₂S detectors, alarms, warning systems, briefing areas, evacuation procedures, and prevailing winds.
4. The proper techniques for first aid and rescue procedures.

In addition, supervisory personnel will be trained in the following areas:

1. The effects of H₂S metal components. If high tensile tubulars are to be used, personnel will be trained in their special maintenance requirements.
2. Corrective action and shut-in procedures when drilling or reworking a well and blowout prevention and well control procedures.
3. The contents and requirements of the H₂S Drilling Operations Plan and Public Protection Plan.

There will be an initial training session just prior to encountering a known or probable H₂S zone (within 3 days or 500 feet) and weekly H₂S and well control drills for all personnel in each crew. The initial training session shall include a review of the site specific H₂S Drilling Operations Plan and the Public Protection Plan.

II. HYDROGEN SULFIDE TRAINING

Note: All H₂S safety equipment and systems will be installed, tested, and operational when drilling reaches a depth of 500 feet above, or three days prior to penetrating the first zone containing or reasonably expected to contain H₂S.

1. Well Control Equipment

- A. Flare line
- B. Choke manifold – Remotely Operated
- C. Blind rams and pipe rams to accommodate all pipe sizes with properly sized closing unit
- D. Auxiliary equipment may include if applicable: annular preventer and rotating head.
- E. Mud/Gas Separator

2. Protective equipment for essential personnel:

30-minute SCBA units located at briefing areas, as indicated on well site diagram, with escape units available in the top doghouse. As it may be difficult to communicate audibly while wearing these units, hand signals shall be utilized.

3. H₂S detection and monitoring equipment:

Portable H₂S monitors positioned on location for best coverage and response. These units have warning lights which activate when H₂S levels reach 10 ppm and audible sirens which activate at 15 ppm. Sensor locations:

- Bell nipple
- Possum Belly/Shale shaker
- Rig floor
- Choke manifold
- Cellar

Visual warning systems:

- A. Wind direction indicators as shown on well site diagram
- B. Caution/ Danger signs shall be posted on roads providing direct access to locations. Signs will be painted a high visibility yellow with black lettering of sufficient size to be reasonable distance from the immediate location. Bilingual signs will be used when appropriate.

4. Mud program:

The mud program has been designed to minimize the volume of H₂S circulated to surface. Proper mud weight, safe drilling practices and the use of H₂S scavengers will minimize hazards when penetrating H₂S bearing zones.

5. Metallurgy:

- A. All drill strings, casings, tubing, wellhead, blowout preventer, drilling spool, kill lines, choke manifold lines, and valves shall be H₂S trim.
- B. All elastomers used for packing and seals shall be H₂S trim.

6. Communication:

- A. Company personnel have/use cellular telephones in the field.
- B. Land line (telephone) communications at Office

7. Well testing:

- A. Drill stem testing will be performed with a minimum number of personnel in the immediate vicinity, which are necessary to safety and adequately conduct the test. The drill stem testing will be conducted during daylight hours and formation fluids will not be flowed to the surface. All drill-stem-testing operations conducted in an H₂S environment will use the closed chamber method of testing.
- B. There will be no drill stem testing.

<u>Devon Energy Corp. Company Call List</u>		
Drilling Supervisor – Basin – Mark Kramer		405-823-4796
EHS Professional – Laura Wright		405-439-8129
<u>Agency Call List</u>		
<u>Lea County (575)</u>	<u>Hobbs</u>	
	Lea County Communication Authority	393-3981
	State Police	392-5588
	City Police	397-9265
	Sheriff's Office	393-2515
	Ambulance	911
	Fire Department	397-9308
	LEPC (Local Emergency Planning Committee)	393-2870
	NMOCD	393-6161
	US Bureau of Land Management	393-3612
<u>Eddy County (575)</u>	<u>Carlsbad</u>	
	State Police	885-3137
	City Police	885-2111
	Sheriff's Office	887-7551
	Ambulance	911
	Fire Department	885-3125
	LEPC (Local Emergency Planning Committee)	887-3798
	US Bureau of Land Management	887-6544
	NM Emergency Response Commission (Santa Fe)	(505) 476-9600
	24 HR	(505) 827-9126
	National Emergency Response Center	(800) 424-8802
	National Pollution Control Center: Direct	(703) 872-6000
	For Oil Spills	(800) 280-7118
	Emergency Services	
	Wild Well Control	(281) 784-4700
	Cudd Pressure Control	(915) 699-0139 (915) 563-3356
	Halliburton	(575) 746-2757
	B. J. Services	(575) 746-3569
<u>Give GPS position:</u>	Native Air – Emergency Helicopter – Hobbs (TX & NM)	(800) 642-7828
	Flight For Life - Lubbock, TX	(806) 743-9911
	Aerocare - Lubbock, TX	(806) 747-8923
	Med Flight Air Amb - Albuquerque, NM	(575) 842-4433
	Lifeguard Air Med Svc. Albuquerque, NM	(800) 222-1222
	Poison Control (24/7)	(575) 272-3115
	Oil & Gas Pipeline 24 Hour Service	(800) 364-4366
	NOAA – Website - www.nhc.noaa.gov	

Prepared in conjunction with
Dave Small



1. Geologic Formations

TVD of target	10200	Pilot hole depth	N/A
MD at TD:	23073	Deepest expected fresh water	

Basin

[illegible]

*H₂S, water flows, loss of circulation, abnormal pressures, etc.

2. Casing Program

Hole Size	Casing Interval		Csg. Size	Wt (PPF)	Grade	Conn	Min SF Collapse	Min SF Burst	Min SF Tension
	From	To							
17 1/2	0	750 TVD	13 3/8	48.0	H40	BTC	1.125	1.25	1.6
12 1/4	0	4635 TVD	9 5/8	40.0	J-55	BTC	1.125	1.25	1.6
8 3/4	0	TD	5 1/2	17.0	P110	BTC	1.125	1.25	1.6
BLM Minimum Safety Factor							1.125	1	1.6 Dry 1.8 Wet

- All casing strings will be tested in accordance with Onshore Oil and Gas Order #2 IILB.1.h Must have table for contingency casing.
- Rustler top will be validated via drilling parameters (i.e. reduction in ROP) and surface casing setting depth revised accordingly if needed.
- A variance is requested for collapse rating on intermediate casing. Operator will keep pipe full while running casing.
- Int casing shoe will be selected based on drilling data, gamma, and flows experienced while drilling. Setting depth will be revised accordingly if needed.
- A variance is requested to wave the centralizer requirement for the Intermediate casing and production casing.

Chincoteague 8-32 Fed State Com 524H

	Y or N
Is casing new? If used, attach certification as required in Onshore Order #1	Y
Does casing meet API specifications? If no, attach casing specification sheet.	Y
Is premium or uncommon casing planned? If yes attach casing specification sheet.	N
Does the above casing design meet or exceed BLM's minimum standards? If not provide justification (loading assumptions, casing design criteria).	Y
Will the intermediate pipe be kept at a minimum 1/3 fluid filled to avoid approaching the collapse pressure rating of the casing?	Y
Is well located within Capitan Reef?	N
If yes, does production casing cement tie back a minimum of 50' above the Reef?	
Is well within the designated 4 string boundary.	
Is well located in SOPA but not in R-111-P?	N
If yes, are the first 2 strings cemented to surface and 3 rd string cement tied back 500' into previous casing?	
Is well located in R-111-P and SOPA?	N
If yes, are the first three strings cemented to surface?	
Is 2 nd string set 100' to 600' below the base of salt?	
Is well located in high Cave/Karst?	N
If yes, are there two strings cemented to surface?	
(For 2 string wells) If yes, is there a contingency casing if lost circulation occurs?	
Is well located in critical Cave/Karst?	N
If yes, are there three strings cemented to surface?	

3. Cementing Program (3-String Primary Design)

Casing	# Sks	TOC	Wt. (lb/gal)	Yld (ft³/sack)	Slurry Description
Surface	581	Surf	13.2	1.4	Lead: Class C Cement + additives
Int	508	Surf	9.0	3.3	Lead: Class C Cement + additives
	154	500' above shoe	13.2	1.4	Tail: Class H / C + additives
Int 1 Two Stage w/ DV @ TVD of Delaware	495	Surf	9.0	3.3	1st stage Lead: Class C Cement + additives
	136	500' above shoe	13.2	1.4	1st stage Tail: Class H / C + additives
	480	Surf	9.0	3.3	2nd stage Lead: Class C Cement + additives
	136	500' above DV	13.2	1.4	2nd stage Tail: Class H / C + additives
Int 1 Intermediate Squeeze	As Needed	Surf	9.0	3.3	Squeeze Lead: Class C Cement + additives
	508	Surf	9.0	3.3	Lead: Class C Cement + additives
	154	500' above shoe	13.2	1.4	Tail: Class H / C + additives
Production	469	500' tieback	9.0	3.3	Lead: Class H / C + additives
	2592	KOP	13.2	1.4	Tail: Class H / C + additives

If a DV tool is ran the depth(s) will be adjusted based on hole conditions and cement volumes will be adjusted proportionally. Slurry weights will be adjusted based on estimated fracture gradient of the formation. DV tool will be set a minimum of 50 feet below previous casing and a minimum of 200 feet above current shoe. If cement is not returned to surface during the primary cement job on the surface casing string, a planned top job will be conducted immediately after completion of the primary job.

Casing String	% Excess
Surface	50%
Intermediate	30%
Production	10%

4. Pressure Control Equipment (Three String Design)

BOP installed and tested before drilling which hole?	Size?	Min. Required WP	Type	✓	Tested to:
Int 1	13-5/8"	5M	Annular	X	50% of rated working pressure
			Blind Ram	X	5M
			Pipe Ram		
			Double Ram	X	
			Other*		
Production	13-5/8"	5M	Annular	X	50% of rated working pressure
			Blind Ram	X	5M
			Pipe Ram		
			Double Ram	X	
			Other*		
			Annular (5M)		
			Blind Ram		
			Pipe Ram		
			Double Ram		
			Other*		

5. Mud Program (Three String Design)

Section	Type	Weight (ppg)
Surface	FW Gel	8.5-9
Intermediate	Brine	10-10.5
Production	WBM	8.5-9

Sufficient mud materials to maintain mud properties and meet minimum lost circulation and weight increase requirements will be kept on location at all times.

What will be used to monitor the loss or gain of fluid?	PVT/Pason/Visual Monitoring
---	-----------------------------

6. Logging and Testing Procedures**Logging, Coring and Testing**

X	Will run GR/CNL from TD to surface (horizontal well - vertical portion of hole). Stated logs run will be in the Completion Report and submitted to the BLM.
	No logs are planned based on well control or offset log information.
	Drill stem test? If yes, explain.
	Coring? If yes, explain.

Additional logs planned	Interval
Resistivity	
Density	
X CBL	Production casing
X Mud log	KOP to TD
PEX	

7. Drilling Conditions

Condition	Specify what type and where?
BH pressure at deepest TVD	4774
Abnormal temperature	No

Mitigation measure for abnormal conditions. Describe. Lost circulation material/sweeps/mud scavengers.

Hydrogen Sulfide (H₂S) monitors will be installed prior to drilling out the surface shoe. If H₂S is detected in concentrations greater than 100 ppm, the operator will comply with the provisions of Onshore Oil and Gas Order #6. If Hydrogen Sulfide is encountered measured values and formations will be provided to the BLM.

N	H ₂ S is present
Y	H ₂ S plan attached.

8. Other facets of operation

Is this a walking operation? Potentially

- 1 If operator elects, drilling rig will batch drill the surface holes and run/cement surface casing; walking the rig to next wells on the pad.
- 2 The drilling rig will then batch drill the intermediate sections and run/cement intermediate casing; the wellbore will be isolated with a blind flange and pressure gauge installed for monitoring the well before walking to the next well.
- 3 The drilling rig will then batch drill the production hole sections on the wells with OBM, run/cement production casing, and install TA caps or tubing heads for completions.

NOTE: During batch operations the drilling rig will be moved from well to well however, it will not be removed from the pad until all wells have production casing run/cemented.

Will be pre-setting casing? Potentially

- 1 Spudder rig will move in and batch drill surface hole.
 - a. Rig will utilize fresh water based mud to drill surface hole to TD. Solids control will be handled entirely on a closed loop basis.
- 2 After drilling the surface hole section, the spudder rig will run casing and cement following all of the applicable rules and regulations (OnShore Order 2, all COAs and NMOCD regulations).
- 3 The wellhead will be installed and tested once the surface casing is cut off and the WOC time has been reached.
- 4 A blind flange with the same pressure rating as the wellhead will be installed to seal the wellbore. Pressure will be monitored with a pressure gauge installed on the wellhead.
- 5 Spudder rig operations is expected to take 4-5 days per well on a multi-well pad.
- 6 The NMOCD will be contacted and notified 24 hours prior to commencing spudder rig operations.
- 7 Drilling operations will be performed with drilling rig. At that time an approved BOP stack will be nipped up and tested on the wellhead before drilling operations commences on each well.
 - a. The NMOCD will be contacted / notified 24 hours before the drilling rig moves back on to the pad with the pre-set surface casing.

Attachments

X Directional Plan
 Other, describe

Planning Report - Geographic

Database:	EDM r5000.141_Prod US	Local Co-ordinate Reference:	Well Chincoteague 8-32 Fed State Com 524H
Company:	WCDSC Permian NM	TVD Reference:	RKB @ 3463.00ft
Project:	Lea County (NAD83 New Mexico East)	MD Reference:	RKB @ 3463.00ft
Site:	Sec 08-T25S-R32E	North Reference:	Grid
Well:	Chincoteague 8-32 Fed State Com 524H	Survey Calculation Method:	Minimum Curvature
Wellbore:	Wellbore #1		
Design:	Permit Plan 1		

Project	Lea County (NAD83 New Mexico East)		
Map System:	US State Plane 1983	System Datum:	Mean Sea Level
Geo Datum:	North American Datum 1983		
Map Zone:	New Mexico Eastern Zone		

Site		Sec 08-T25S-R32E			
Site Position:		Northing:	419,630.47 usft	Latitude:	32.152087
From:	Map	Easting:	735,551.49 usft	Longitude:	-103.705780
Position Uncertainty:	0.00 ft	Slot Radius:	13-3/16 "	Grid Convergence:	0.33 °

Well	Chincoteague 8-32 Fed State Com 524H					
Well Position	+N/-S	0.00 ft	Northing:	417,364.89 usft	Latitude:	32.145785
	+E/-W	0.00 ft	Easting:	740,153.80 usft	Longitude:	-103.690953
Position Uncertainty		0.50 ft	Wellhead Elevation:		Ground Level:	3,438.00 ft

Wellbore	Wellbore #1				
Magnetics	Model Name	Sample Date	Declination (°)	Dip Angle (°)	Field Strength (nT)
	IGRF2015	3/26/2019	6.81	59.95	47,696.99051015

Design	Permit Plan 1			
Audit Notes:				
Version:	Phase:	PROTOTYPE	Tie On Depth:	0.00
Vertical Section:	Depth From (TVD) (ft)	+N/-S (ft)	+E/-W (ft)	Direction (°)
	0.00	0.00	0.00	358.89

Plan Survey Tool Program	Date	3/28/2019		
Depth From (ft)	Depth To (ft)	Survey (Wellbore)	Tool Name	Remarks
1	0.00	23,072.52 Permit Plan 1 (Wellbore #1)	MWD+IFR1 OWSG MWD + IFR1	

Planning Report - Geographic

Database:	EDM r5000.141_Prod US	Local Co-ordinate Reference:	Well Chincoteague 8-32 Fed State Com 524H
Company:	WCDSC Permian NM	TVD Reference:	RKB @ 3463.00ft
Project:	Lea County (NAD83 New Mexico East)	MD Reference:	RKB @ 3463.00ft
Site:	Sec 08-T25S-R32E	North Reference:	Grid
Well:	Chincoteague 8-32 Fed State Com 524H	Survey Calculation Method:	Minimum Curvature
Wellbore:	Wellbore #1		
Design:	Permit Plan 1		

Plan Sections										
Measured Depth (ft)	Inclination (°)	Azimuth (°)	Vertical Depth (ft)	+N/-S (ft)	+E/-W (ft)	Dogleg Rate (°/100usft)	Build Rate (°/100usft)	Turn Rate (°/100usft)	TFO (°)	Target
0.00	0.00	0.00	0.00	0.00	0.00	0.00	0.00	0.00	0.00	
3,500.00	0.00	0.00	3,500.00	0.00	0.00	0.00	0.00	0.00	0.00	
3,910.49	4.10	233.86	3,910.13	-8.67	-11.87	1.00	1.00	0.00	233.86	
9,017.03	4.10	233.86	9,003.58	-224.22	-307.09	0.00	0.00	0.00	0.00	
9,290.68	0.00	0.00	9,277.00	-230.00	-315.00	1.50	-1.50	0.00	180.00	
9,640.72	0.00	0.00	9,627.04	-230.00	-315.00	0.00	0.00	0.00	0.00	
10,540.73	90.00	0.29	10,200.00	342.95	-312.15	10.00	10.00	0.00	0.29	PBHL - Chincoteague
17,593.88	90.00	0.29	10,200.00	7,396.01	-277.05	0.00	0.00	0.00	0.00	
18,129.62	90.00	11.00	10,200.00	7,928.39	-224.45	2.00	0.00	2.00	90.00	
18,329.62	90.00	11.00	10,200.00	8,124.71	-186.29	0.00	0.00	0.00	0.00	
19,429.62	90.00	349.00	10,200.00	9,217.97	-186.29	2.00	0.00	-2.00	-90.00	
19,531.03	90.00	359.14	10,200.00	9,318.71	-196.75	10.00	0.00	10.00	90.00	PBHL - Chincoteague
23,073.30	90.00	359.14	10,200.00	12,860.58	-249.86	0.00	0.00	0.00	0.00	PBHL - Chincoteague

Planning Report - Geographic

Database:	EDM r5000.141_Prod US	Local Co-ordinate Reference:	Well Chincoteague 8-32 Fed State Com 524H
Company:	WCDSC Permian NM	TVD Reference:	RKB @ 3463.00ft
Project:	Lea County (NAD83 New Mexico East)	MD Reference:	RKB @ 3463.00ft
Site:	Sec 08-T25S-R32E	North Reference:	Grid
Well:	Chincoteague 8-32 Fed State Com 524H	Survey Calculation Method:	Minimum Curvature
Wellbore:	Wellbore #1		
Design:	Permit Plan 1		

Planned Survey

Measured Depth (ft)	Inclination (°)	Azimuth (°)	Vertical Depth (ft)	+N/-S (ft)	+E/-W (ft)	Map Northing (usft)	Map Easting (usft)	Latitude	Longitude
0.00	0.00	0.00	0.00	0.00	0.00	417,364.89	740,153.80	32.145785	-103.690953
100.00	0.00	0.00	100.00	0.00	0.00	417,364.89	740,153.80	32.145785	-103.690953
200.00	0.00	0.00	200.00	0.00	0.00	417,364.89	740,153.80	32.145785	-103.690953
300.00	0.00	0.00	300.00	0.00	0.00	417,364.89	740,153.80	32.145785	-103.690953
400.00	0.00	0.00	400.00	0.00	0.00	417,364.89	740,153.80	32.145785	-103.690953
500.00	0.00	0.00	500.00	0.00	0.00	417,364.89	740,153.80	32.145785	-103.690953
600.00	0.00	0.00	600.00	0.00	0.00	417,364.89	740,153.80	32.145785	-103.690953
700.00	0.00	0.00	700.00	0.00	0.00	417,364.89	740,153.80	32.145785	-103.690953
800.00	0.00	0.00	800.00	0.00	0.00	417,364.89	740,153.80	32.145785	-103.690953
900.00	0.00	0.00	900.00	0.00	0.00	417,364.89	740,153.80	32.145785	-103.690953
1,000.00	0.00	0.00	1,000.00	0.00	0.00	417,364.89	740,153.80	32.145785	-103.690953
1,100.00	0.00	0.00	1,100.00	0.00	0.00	417,364.89	740,153.80	32.145785	-103.690953
1,200.00	0.00	0.00	1,200.00	0.00	0.00	417,364.89	740,153.80	32.145785	-103.690953
1,300.00	0.00	0.00	1,300.00	0.00	0.00	417,364.89	740,153.80	32.145785	-103.690953
1,400.00	0.00	0.00	1,400.00	0.00	0.00	417,364.89	740,153.80	32.145785	-103.690953
1,500.00	0.00	0.00	1,500.00	0.00	0.00	417,364.89	740,153.80	32.145785	-103.690953
1,600.00	0.00	0.00	1,600.00	0.00	0.00	417,364.89	740,153.80	32.145785	-103.690953
1,700.00	0.00	0.00	1,700.00	0.00	0.00	417,364.89	740,153.80	32.145785	-103.690953
1,800.00	0.00	0.00	1,800.00	0.00	0.00	417,364.89	740,153.80	32.145785	-103.690953
1,900.00	0.00	0.00	1,900.00	0.00	0.00	417,364.89	740,153.80	32.145785	-103.690953
2,000.00	0.00	0.00	2,000.00	0.00	0.00	417,364.89	740,153.80	32.145785	-103.690953
2,100.00	0.00	0.00	2,100.00	0.00	0.00	417,364.89	740,153.80	32.145785	-103.690953
2,200.00	0.00	0.00	2,200.00	0.00	0.00	417,364.89	740,153.80	32.145785	-103.690953
2,300.00	0.00	0.00	2,300.00	0.00	0.00	417,364.89	740,153.80	32.145785	-103.690953
2,400.00	0.00	0.00	2,400.00	0.00	0.00	417,364.89	740,153.80	32.145785	-103.690953
2,500.00	0.00	0.00	2,500.00	0.00	0.00	417,364.89	740,153.80	32.145785	-103.690953
2,600.00	0.00	0.00	2,600.00	0.00	0.00	417,364.89	740,153.80	32.145785	-103.690953
2,700.00	0.00	0.00	2,700.00	0.00	0.00	417,364.89	740,153.80	32.145785	-103.690953
2,800.00	0.00	0.00	2,800.00	0.00	0.00	417,364.89	740,153.80	32.145785	-103.690953
2,900.00	0.00	0.00	2,900.00	0.00	0.00	417,364.89	740,153.80	32.145785	-103.690953
3,000.00	0.00	0.00	3,000.00	0.00	0.00	417,364.89	740,153.80	32.145785	-103.690953
3,100.00	0.00	0.00	3,100.00	0.00	0.00	417,364.89	740,153.80	32.145785	-103.690953
3,200.00	0.00	0.00	3,200.00	0.00	0.00	417,364.89	740,153.80	32.145785	-103.690953
3,300.00	0.00	0.00	3,300.00	0.00	0.00	417,364.89	740,153.80	32.145785	-103.690953
3,400.00	0.00	0.00	3,400.00	0.00	0.00	417,364.89	740,153.80	32.145785	-103.690953
3,500.00	0.00	0.00	3,500.00	0.00	0.00	417,364.89	740,153.80	32.145785	-103.690953
3,600.00	1.00	233.86	3,600.00	-0.51	-0.70	417,364.37	740,153.09	32.145783	-103.690956
3,700.00	2.00	233.86	3,699.96	-2.06	-2.82	417,362.83	740,150.98	32.145779	-103.690963
3,800.00	3.00	233.86	3,799.86	-4.63	-6.34	417,360.26	740,147.45	32.145772	-103.690974
3,900.00	4.00	233.86	3,899.68	-8.23	-11.27	417,356.66	740,142.52	32.145762	-103.690990
3,910.49	4.10	233.86	3,910.13	-8.67	-11.87	417,356.22	740,141.93	32.145761	-103.690992
4,000.00	4.10	233.86	3,999.42	-12.45	-17.05	417,352.44	740,136.75	32.145751	-103.691009
4,100.00	4.10	233.86	4,099.16	-16.67	-22.83	417,348.22	740,130.97	32.145739	-103.691027
4,200.00	4.10	233.86	4,198.91	-20.89	-28.61	417,344.00	740,125.19	32.145728	-103.691046
4,300.00	4.10	233.86	4,298.65	-25.11	-34.39	417,339.78	740,119.41	32.145716	-103.691065
4,400.00	4.10	233.86	4,398.39	-29.33	-40.17	417,335.56	740,113.63	32.145705	-103.691084
4,500.00	4.10	233.86	4,498.14	-33.55	-45.95	417,331.34	740,107.85	32.145693	-103.691102
4,600.00	4.10	233.86	4,597.88	-37.77	-51.73	417,327.12	740,102.06	32.145682	-103.691121
4,700.00	4.10	233.86	4,697.62	-41.99	-57.51	417,322.90	740,096.28	32.145670	-103.691140
4,800.00	4.10	233.86	4,797.37	-46.21	-63.29	417,318.67	740,090.50	32.145659	-103.691159
4,900.00	4.10	233.86	4,897.11	-50.44	-69.08	417,314.45	740,084.72	32.145647	-103.691178
5,000.00	4.10	233.86	4,996.85	-54.66	-74.86	417,310.23	740,078.94	32.145635	-103.691196
5,100.00	4.10	233.86	5,096.60	-58.88	-80.64	417,306.01	740,073.16	32.145624	-103.691215
5,200.00	4.10	233.86	5,196.34	-63.10	-86.42	417,301.79	740,067.38	32.145612	-103.691234
5,300.00	4.10	233.86	5,296.08	-67.32	-92.20	417,297.57	740,061.60	32.145601	-103.691253

Planning Report - Geographic

Database:	EDM r5000.141_Prod US	Local Co-ordinate Reference:	Well Chincoteague 8-32 Fed State Com 524H
Company:	WCDSC Permian NM	TVD Reference:	RKB @ 3463.00ft
Project:	Lea County (NAD83 New Mexico East)	MD Reference:	RKB @ 3463.00ft
Site:	Sec 08-T25S-R32E	North Reference:	Grid
Well:	Chincoteague 8-32 Fed State Com 524H	Survey Calculation Method:	Minimum Curvature
Wellbore:	Wellbore #1		
Design:	Permit Plan 1		

Planned Survey										
Measured Depth (ft)	Inclination (°)	Azimuth (°)	Vertical Depth (ft)	+N/-S (ft)	+E/-W (ft)	Map Northing (usft)	Map Easting (usft)	Latitude	Longitude	
5,400.00	4.10	233.86	5,395.83	-71.54	-97.98	417,293.35	740,055.82	32.145589	-103.691271	
5,500.00	4.10	233.86	5,495.57	-75.76	-103.76	417,289.13	740,050.03	32.145578	-103.691290	
5,600.00	4.10	233.86	5,595.32	-79.98	-109.54	417,284.91	740,044.25	32.145566	-103.691309	
5,700.00	4.10	233.86	5,695.06	-84.21	-115.32	417,280.68	740,038.47	32.145555	-103.691328	
5,800.00	4.10	233.86	5,794.80	-88.43	-121.11	417,276.46	740,032.69	32.145543	-103.691346	
5,900.00	4.10	233.86	5,894.55	-92.65	-126.89	417,272.24	740,026.91	32.145532	-103.691365	
6,000.00	4.10	233.86	5,994.29	-96.87	-132.67	417,268.02	740,021.13	32.145520	-103.691384	
6,100.00	4.10	233.86	6,094.03	-101.09	-138.45	417,263.80	740,015.35	32.145509	-103.691403	
6,200.00	4.10	233.86	6,193.78	-105.31	-144.23	417,259.58	740,009.57	32.145497	-103.691421	
6,300.00	4.10	233.86	6,293.52	-109.53	-150.01	417,255.36	740,003.79	32.145486	-103.691440	
6,400.00	4.10	233.86	6,393.26	-113.75	-155.79	417,251.14	739,998.00	32.145474	-103.691459	
6,500.00	4.10	233.86	6,493.01	-117.97	-161.57	417,246.92	739,992.22	32.145463	-103.691478	
6,600.00	4.10	233.86	6,592.75	-122.20	-167.35	417,242.69	739,986.44	32.145451	-103.691496	
6,700.00	4.10	233.86	6,692.49	-126.42	-173.14	417,238.47	739,980.66	32.145440	-103.691515	
6,800.00	4.10	233.86	6,792.24	-130.64	-178.92	417,234.25	739,974.88	32.145428	-103.691534	
6,900.00	4.10	233.86	6,891.98	-134.86	-184.70	417,230.03	739,969.10	32.145417	-103.691553	
7,000.00	4.10	233.86	6,991.72	-139.08	-190.48	417,225.81	739,963.32	32.145405	-103.691571	
7,100.00	4.10	233.86	7,091.47	-143.30	-196.26	417,221.59	739,957.54	32.145394	-103.691590	
7,200.00	4.10	233.86	7,191.21	-147.52	-202.04	417,217.37	739,951.76	32.145382	-103.691609	
7,300.00	4.10	233.86	7,290.95	-151.74	-207.82	417,213.15	739,945.97	32.145371	-103.691628	
7,400.00	4.10	233.86	7,390.70	-155.96	-213.60	417,208.92	739,940.19	32.145359	-103.691647	
7,500.00	4.10	233.86	7,490.44	-160.19	-219.39	417,204.70	739,934.41	32.145348	-103.691665	
7,600.00	4.10	233.86	7,590.18	-164.41	-225.17	417,200.48	739,928.63	32.145336	-103.691684	
7,700.00	4.10	233.86	7,689.93	-168.63	-230.95	417,196.26	739,922.85	32.145325	-103.691703	
7,800.00	4.10	233.86	7,789.67	-172.85	-236.73	417,192.04	739,917.07	32.145313	-103.691722	
7,900.00	4.10	233.86	7,889.41	-177.07	-242.51	417,187.82	739,911.29	32.145302	-103.691740	
8,000.00	4.10	233.86	7,989.16	-181.29	-248.29	417,183.60	739,905.51	32.145290	-103.691759	
8,100.00	4.10	233.86	8,088.90	-185.51	-254.07	417,179.38	739,899.73	32.145279	-103.691778	
8,200.00	4.10	233.86	8,188.65	-189.73	-259.85	417,175.16	739,893.94	32.145267	-103.691797	
8,300.00	4.10	233.86	8,288.39	-193.96	-265.63	417,170.93	739,888.16	32.145256	-103.691815	
8,400.00	4.10	233.86	8,388.13	-198.18	-271.42	417,166.71	739,882.38	32.145244	-103.691834	
8,500.00	4.10	233.86	8,487.88	-202.40	-277.20	417,162.49	739,876.60	32.145233	-103.691853	
8,600.00	4.10	233.86	8,587.62	-206.62	-282.98	417,158.27	739,870.82	32.145221	-103.691872	
8,700.00	4.10	233.86	8,687.36	-210.84	-288.76	417,154.05	739,865.04	32.145210	-103.691890	
8,800.00	4.10	233.86	8,787.11	-215.06	-294.54	417,149.83	739,859.26	32.145198	-103.691909	
8,900.00	4.10	233.86	8,886.85	-219.28	-300.32	417,145.61	739,853.48	32.145187	-103.691928	
9,000.00	4.10	233.86	8,986.59	-223.50	-306.10	417,141.39	739,847.70	32.145175	-103.691947	
9,017.03	4.10	233.86	9,003.58	-224.22	-307.09	417,140.67	739,846.71	32.145173	-103.691950	
9,100.00	2.86	233.86	9,086.39	-227.19	-311.16	417,137.70	739,842.64	32.145165	-103.691963	
9,200.00	1.36	233.86	9,186.32	-229.37	-314.13	417,135.52	739,839.67	32.145159	-103.691973	
9,290.68	0.00	0.00	9,277.00	-230.00	-315.00	417,134.89	739,838.80	32.145157	-103.691976	
9,300.00	0.00	0.00	9,286.32	-230.00	-315.00	417,134.89	739,838.80	32.145157	-103.691976	
9,400.00	0.00	0.00	9,386.32	-230.00	-315.00	417,134.89	739,838.80	32.145157	-103.691976	
9,500.00	0.00	0.00	9,486.32	-230.00	-315.00	417,134.89	739,838.80	32.145157	-103.691976	
9,600.00	0.00	0.00	9,586.32	-230.00	-315.00	417,134.89	739,838.80	32.145157	-103.691976	
9,640.72	0.00	0.00	9,627.04	-230.00	-315.00	417,134.89	739,838.80	32.145157	-103.691976	
KOP & FTP @ 9641' MD, 2544' FNL, 1040' FEL										
9,700.00	5.93	0.29	9,686.21	-226.94	-314.98	417,137.95	739,838.81	32.145166	-103.691975	
9,800.00	15.93	0.29	9,784.27	-208.00	-314.89	417,156.89	739,838.91	32.145218	-103.691975	
9,900.00	25.93	0.29	9,877.56	-172.33	-314.71	417,192.56	739,839.08	32.145316	-103.691973	
10,000.00	35.93	0.29	9,963.23	-121.00	-314.46	417,243.89	739,839.34	32.145457	-103.691972	
10,100.00	45.93	0.29	10,038.69	-55.58	-314.13	417,309.31	739,839.67	32.145637	-103.691969	
10,200.00	55.93	0.29	10,101.64	21.96	-313.75	417,386.85	739,840.05	32.145850	-103.691967	
10,300.00	65.93	0.29	10,150.17	109.25	-313.31	417,474.14	739,840.49	32.146090	-103.691964	

Planning Report - Geographic

Database: EDM r5000.141_Prod US
Company: WCDSC Permian NM
Project: Lea County (NAD83 New Mexico East)
Site: Sec 08-T25S-R32E
Well: Chincoteague 8-32 Fed State Com 524H
Wellbore: Wellbore #1
Design: Permit Plan 1

Local Co-ordinate Reference: Well Chincoteague 8-32 Fed State Com 524H
TVD Reference: RKB @ 3463.00ft
MD Reference: RKB @ 3463.00ft
North Reference: Grid
Survey Calculation Method: Minimum Curvature

Planned Survey

Measured Depth (ft)	Inclination (°)	Azimuth (°)	Vertical Depth (ft)	+N/-S (ft)	+E/-W (ft)	Map Northing (usft)	Map Easting (usft)	Latitude	Longitude
10,400.00	75.93	0.29	10,182.80	203.64	-312.84	417,568.53	739,840.95	32.146349	-103.691960
10,500.00	85.93	0.29	10,198.55	302.26	-312.35	417,667.15	739,841.45	32.146620	-103.691957
10,540.73	90.00	0.29	10,200.00	342.95	-312.15	417,707.84	739,841.65	32.146732	-103.691955
10,600.00	90.00	0.29	10,200.00	402.22	-311.85	417,767.11	739,841.94	32.146895	-103.691953
10,700.00	90.00	0.29	10,200.00	502.22	-311.36	417,867.11	739,842.44	32.147170	-103.691950
10,800.00	90.00	0.29	10,200.00	602.22	-310.86	417,967.11	739,842.94	32.147445	-103.691946
10,900.00	90.00	0.29	10,200.00	702.22	-310.36	418,067.11	739,843.44	32.147720	-103.691943
11,000.00	90.00	0.29	10,200.00	802.22	-309.86	418,167.11	739,843.93	32.147995	-103.691939
11,100.00	90.00	0.29	10,200.00	902.22	-309.37	418,267.11	739,844.43	32.148270	-103.691936
11,200.00	90.00	0.29	10,200.00	1,002.22	-308.87	418,367.10	739,844.93	32.148544	-103.691932
11,300.00	90.00	0.29	10,200.00	1,102.22	-308.37	418,467.10	739,845.43	32.148819	-103.691928
11,400.00	90.00	0.29	10,200.00	1,202.21	-307.87	418,567.10	739,845.92	32.149094	-103.691925
11,500.00	90.00	0.29	10,200.00	1,302.21	-307.38	418,667.10	739,846.42	32.149369	-103.691921
11,600.00	90.00	0.29	10,200.00	1,402.21	-306.88	418,767.10	739,846.92	32.149644	-103.691918
11,700.00	90.00	0.29	10,200.00	1,502.21	-306.38	418,867.10	739,847.42	32.149919	-103.691914
11,800.00	90.00	0.29	10,200.00	1,602.21	-305.88	418,967.10	739,847.91	32.150194	-103.691911
11,900.00	90.00	0.29	10,200.00	1,702.21	-305.39	419,067.09	739,848.41	32.150468	-103.691907
12,000.00	90.00	0.29	10,200.00	1,802.21	-304.89	419,167.09	739,848.91	32.150743	-103.691904
12,100.00	90.00	0.29	10,200.00	1,902.21	-304.39	419,267.09	739,849.41	32.151018	-103.691900
12,200.00	90.00	0.29	10,200.00	2,002.20	-303.89	419,367.09	739,849.90	32.151293	-103.691897
12,300.00	90.00	0.29	10,200.00	2,102.20	-303.39	419,467.09	739,850.40	32.151568	-103.691893
12,400.00	90.00	0.29	10,200.00	2,202.20	-302.90	419,567.09	739,850.90	32.151843	-103.691890
12,500.00	90.00	0.29	10,200.00	2,302.20	-302.40	419,667.09	739,851.40	32.152118	-103.691886
12,511.00	90.00	0.29	10,200.00	2,313.20	-302.34	419,678.09	739,851.45	32.152148	-103.691886
Cross Section @ 12511' MD, 0' FSL, 1040' FEL									
12,600.00	90.00	0.29	10,200.00	2,402.20	-301.90	419,767.08	739,851.90	32.152393	-103.691883
12,700.00	90.00	0.29	10,200.00	2,502.20	-301.40	419,867.08	739,852.39	32.152667	-103.691879
12,800.00	90.00	0.29	10,200.00	2,602.20	-300.91	419,967.08	739,852.89	32.152942	-103.691875
12,900.00	90.00	0.29	10,200.00	2,702.20	-300.41	420,067.08	739,853.39	32.153217	-103.691872
13,000.00	90.00	0.29	10,200.00	2,802.19	-299.91	420,167.08	739,853.89	32.153492	-103.691868
13,100.00	90.00	0.29	10,200.00	2,902.19	-299.41	420,267.08	739,854.38	32.153767	-103.691865
13,200.00	90.00	0.29	10,200.00	3,002.19	-298.92	420,367.08	739,854.88	32.154042	-103.691861
13,300.00	90.00	0.29	10,200.00	3,102.19	-298.42	420,467.07	739,855.38	32.154317	-103.691858
13,400.00	90.00	0.29	10,200.00	3,202.19	-297.92	420,567.07	739,855.88	32.154591	-103.691854
13,500.00	90.00	0.29	10,200.00	3,302.19	-297.42	420,667.07	739,856.37	32.154866	-103.691851
13,600.00	90.00	0.29	10,200.00	3,402.19	-296.93	420,767.07	739,856.87	32.155141	-103.691847
13,700.00	90.00	0.29	10,200.00	3,502.19	-296.43	420,867.07	739,857.37	32.155416	-103.691844
13,800.00	90.00	0.29	10,200.00	3,602.19	-295.93	420,967.07	739,857.87	32.155691	-103.691840
13,900.00	90.00	0.29	10,200.00	3,702.18	-295.43	421,067.07	739,858.36	32.155966	-103.691837
14,000.00	90.00	0.29	10,200.00	3,802.18	-294.94	421,167.06	739,858.86	32.156241	-103.691833
14,100.00	90.00	0.29	10,200.00	3,902.18	-294.44	421,267.06	739,859.36	32.156515	-103.691830
14,200.00	90.00	0.29	10,200.00	4,002.18	-293.94	421,367.06	739,859.86	32.156790	-103.691826
14,300.00	90.00	0.29	10,200.00	4,102.18	-293.44	421,467.06	739,860.35	32.157065	-103.691822
14,400.00	90.00	0.29	10,200.00	4,202.18	-292.95	421,567.06	739,860.85	32.157340	-103.691819
14,500.00	90.00	0.29	10,200.00	4,302.18	-292.45	421,667.06	739,861.35	32.157615	-103.691815
14,600.00	90.00	0.29	10,200.00	4,402.18	-291.95	421,767.06	739,861.85	32.157890	-103.691812
14,700.00	90.00	0.29	10,200.00	4,502.17	-291.45	421,867.05	739,862.34	32.158165	-103.691808
14,800.00	90.00	0.29	10,200.00	4,602.17	-290.95	421,967.05	739,862.84	32.158440	-103.691805
14,900.00	90.00	0.29	10,200.00	4,702.17	-290.46	422,067.05	739,863.34	32.158714	-103.691801
15,000.00	90.00	0.29	10,200.00	4,802.17	-289.96	422,167.05	739,863.84	32.158989	-103.691798
15,100.00	90.00	0.29	10,200.00	4,902.17	-289.46	422,267.05	739,864.34	32.159264	-103.691794
15,200.00	90.00	0.29	10,200.00	5,002.17	-288.96	422,367.05	739,864.83	32.159539	-103.691791
15,300.00	90.00	0.29	10,200.00	5,102.17	-288.47	422,467.05	739,865.33	32.159814	-103.691787
15,400.00	90.00	0.29	10,200.00	5,202.17	-287.97	422,567.04	739,865.83	32.160089	-103.691784

Planning Report - Geographic

Database: EDM r5000.141_Prod US
Company: WCDSC Permian NM
Project: Lea County (NAD83 New Mexico East)
Site: Sec 08-T25S-R32E
Well: Chincoteague 8-32 Fed State Com 524H
Wellbore: Wellbore #1
Design: Permit Plan 1

Local Co-ordinate Reference: Well Chincoteague 8-32 Fed State Com 524H
TVD Reference: RKB @ 3463.00ft
MD Reference: RKB @ 3463.00ft
North Reference: Grid
Survey Calculation Method: Minimum Curvature

Planned Survey

Measured Depth (ft)	Inclination (°)	Azimuth (°)	Vertical Depth (ft)	+N/-S (ft)	+E/-W (ft)	Map Northing (usft)	Map Easting (usft)	Latitude	Longitude
15,500.00	90.00	0.29	10,200.00	5,302.16	-287.47	422,667.04	739,866.33	32.160364	-103.691780
15,600.00	90.00	0.29	10,200.00	5,402.16	-286.97	422,767.04	739,866.82	32.160638	-103.691777
15,700.00	90.00	0.29	10,200.00	5,502.16	-286.48	422,867.04	739,867.32	32.160913	-103.691773
15,800.00	90.00	0.29	10,200.00	5,602.16	-285.98	422,967.04	739,867.82	32.161188	-103.691769
15,900.00	90.00	0.29	10,200.00	5,702.16	-285.48	423,067.04	739,868.32	32.161463	-103.691766
16,000.00	90.00	0.29	10,200.00	5,802.16	-284.98	423,167.04	739,868.81	32.161738	-103.691762
16,100.00	90.00	0.29	10,200.00	5,902.16	-284.49	423,267.03	739,869.31	32.162013	-103.691759
16,200.00	90.00	0.29	10,200.00	6,002.16	-283.99	423,367.03	739,869.81	32.162288	-103.691755
16,300.00	90.00	0.29	10,200.00	6,102.15	-283.49	423,467.03	739,870.31	32.162563	-103.691752
16,400.00	90.00	0.29	10,200.00	6,202.15	-282.99	423,567.03	739,870.80	32.162837	-103.691748
16,500.00	90.00	0.29	10,200.00	6,302.15	-282.50	423,667.03	739,871.30	32.163112	-103.691745
16,600.00	90.00	0.29	10,200.00	6,402.15	-282.00	423,767.03	739,871.80	32.163387	-103.691741
16,700.00	90.00	0.29	10,200.00	6,502.15	-281.50	423,867.03	739,872.30	32.163662	-103.691738
16,800.00	90.00	0.29	10,200.00	6,602.15	-281.00	423,967.02	739,872.79	32.163937	-103.691734
16,900.00	90.00	0.29	10,200.00	6,702.15	-280.51	424,067.02	739,873.29	32.164212	-103.691731
17,000.00	90.00	0.29	10,200.00	6,802.15	-280.01	424,167.02	739,873.79	32.164487	-103.691727
17,100.00	90.00	0.29	10,200.00	6,902.14	-279.51	424,267.02	739,874.29	32.164761	-103.691724
17,200.00	90.00	0.29	10,200.00	7,002.14	-279.01	424,367.02	739,874.78	32.165036	-103.691720
17,300.00	90.00	0.29	10,200.00	7,102.14	-278.51	424,467.02	739,875.28	32.165311	-103.691716
17,400.00	90.00	0.29	10,200.00	7,202.14	-278.02	424,567.02	739,875.78	32.165586	-103.691713
17,500.00	90.00	0.29	10,200.00	7,302.14	-277.52	424,667.01	739,876.28	32.165861	-103.691709
17,593.88	90.00	0.29	10,200.00	7,396.01	-277.05	424,760.89	739,876.74	32.166119	-103.691706
17,600.00	90.00	0.41	10,200.00	7,402.14	-277.02	424,767.01	739,876.78	32.166136	-103.691706
17,700.00	90.00	2.41	10,200.00	7,502.10	-274.56	424,866.98	739,879.24	32.166410	-103.691696
17,791.00	90.00	4.23	10,200.00	7,592.95	-269.29	424,957.82	739,884.50	32.166660	-103.691677
Cross Section @ 17791' MD, 0' FSL, 1100' FEL									
17,800.00	90.00	4.41	10,200.00	7,601.92	-268.62	424,966.80	739,885.18	32.166685	-103.691675
17,900.00	90.00	6.41	10,200.00	7,701.47	-259.19	425,066.34	739,894.60	32.166958	-103.691642
18,000.00	90.00	8.41	10,200.00	7,800.63	-246.30	425,165.50	739,907.50	32.167231	-103.691599
18,100.00	90.00	10.41	10,200.00	7,899.28	-229.96	425,264.15	739,923.84	32.167501	-103.691544
18,129.62	90.00	11.00	10,200.00	7,928.39	-224.45	425,293.26	739,929.34	32.167581	-103.691526
18,200.00	90.00	11.00	10,200.00	7,997.47	-211.02	425,362.35	739,942.77	32.167771	-103.691481
18,300.00	90.00	11.00	10,200.00	8,095.64	-191.94	425,460.51	739,961.85	32.168041	-103.691418
18,329.62	90.00	11.00	10,200.00	8,124.71	-186.29	425,489.59	739,967.51	32.168120	-103.691399
18,400.00	90.00	9.59	10,200.00	8,193.96	-173.71	425,558.83	739,980.08	32.168311	-103.691357
18,500.00	90.00	7.59	10,200.00	8,292.83	-158.77	425,657.70	739,995.02	32.168582	-103.691307
18,600.00	90.00	5.59	10,200.00	8,392.16	-147.29	425,757.03	740,006.50	32.168855	-103.691268
18,700.00	90.00	3.59	10,200.00	8,491.84	-139.29	425,856.71	740,014.51	32.169129	-103.691240
18,800.00	90.00	1.59	10,200.00	8,591.73	-134.76	425,956.60	740,019.03	32.169403	-103.691223
18,900.00	90.00	359.59	10,200.00	8,691.72	-133.73	426,056.59	740,020.07	32.169678	-103.691218
19,000.00	90.00	357.59	10,200.00	8,791.68	-136.19	426,156.55	740,017.61	32.169953	-103.691224
19,100.00	90.00	355.59	10,200.00	8,891.50	-142.13	426,256.37	740,011.67	32.170227	-103.691241
19,200.00	90.00	353.59	10,200.00	8,991.05	-151.55	426,355.92	740,002.24	32.170501	-103.691270
19,300.00	90.00	351.59	10,200.00	9,090.21	-164.45	426,455.08	739,989.35	32.170774	-103.691310
19,400.00	90.00	349.59	10,200.00	9,188.86	-180.79	426,553.73	739,973.01	32.171045	-103.691360
19,429.62	90.00	349.00	10,200.00	9,217.97	-186.29	426,582.84	739,967.51	32.171126	-103.691378
19,500.00	90.00	356.04	10,200.00	9,287.70	-195.45	426,652.57	739,958.35	32.171317	-103.691406
19,531.03	90.00	359.14	10,200.00	9,318.71	-196.75	426,683.58	739,957.04	32.171403	-103.691410
19,600.00	90.00	359.14	10,200.00	9,387.66	-197.79	426,752.53	739,956.01	32.171592	-103.691412
19,700.00	90.00	359.14	10,200.00	9,487.65	-199.29	426,852.52	739,954.51	32.171867	-103.691414
19,800.00	90.00	359.14	10,200.00	9,587.64	-200.79	426,952.51	739,953.01	32.172142	-103.691417
19,900.00	90.00	359.14	10,200.00	9,687.63	-202.29	427,052.50	739,951.51	32.172417	-103.691420
20,000.00	90.00	359.14	10,200.00	9,787.62	-203.79	427,152.49	739,950.01	32.172692	-103.691423
20,100.00	90.00	359.14	10,200.00	9,887.61	-205.28	427,252.48	739,948.51	32.172966	-103.691426

Planning Report - Geographic

Database:	EDM r5000.141_Prod US	Local Co-ordinate Reference:	Well Chincoteague 8-32 Fed State Com 524H
Company:	WCDSC Permian NM	TVD Reference:	RKB @ 3463.00ft
Project:	Lea County (NAD83 New Mexico East)	MD Reference:	RKB @ 3463.00ft
Site:	Sec 08-T25S-R32E	North Reference:	Grid
Well:	Chincoteague 8-32 Fed State Com 524H	Survey Calculation Method:	Minimum Curvature
Wellbore:	Wellbore #1		
Design:	Permit Plan 1		

Planned Survey									
Measured Depth (ft)	Inclination (°)	Azimuth (°)	Vertical Depth (ft)	+N/-S (ft)	+E/-W (ft)	Map Northing (usft)	Map Easting (usft)	Latitude	Longitude
20,200.00	90.00	359.14	10,200.00	9,987.60	-206.78	427,352.47	739,947.01	32.173241	-103.691429
20,300.00	90.00	359.14	10,200.00	10,087.59	-208.28	427,452.45	739,945.51	32.173516	-103.691432
20,400.00	90.00	359.14	10,200.00	10,187.57	-209.78	427,552.44	739,944.02	32.173791	-103.691435
20,500.00	90.00	359.14	10,200.00	10,287.56	-211.28	427,652.43	739,942.52	32.174066	-103.691438
20,600.00	90.00	359.14	10,200.00	10,387.55	-212.78	427,752.42	739,941.02	32.174341	-103.691441
20,700.00	90.00	359.14	10,200.00	10,487.54	-214.28	427,852.41	739,939.52	32.174616	-103.691444
20,800.00	90.00	359.14	10,200.00	10,587.53	-215.78	427,952.40	739,938.02	32.174891	-103.691447
20,900.00	90.00	359.14	10,200.00	10,687.52	-217.28	428,052.39	739,936.52	32.175165	-103.691449
21,000.00	90.00	359.14	10,200.00	10,787.51	-218.78	428,152.37	739,935.02	32.175440	-103.691452
21,100.00	90.00	359.14	10,200.00	10,887.50	-220.28	428,252.36	739,933.52	32.175715	-103.691455
21,200.00	90.00	359.14	10,200.00	10,987.48	-221.78	428,352.35	739,932.02	32.175990	-103.691458
21,300.00	90.00	359.14	10,200.00	11,087.47	-223.27	428,452.34	739,930.52	32.176265	-103.691461
21,400.00	90.00	359.14	10,200.00	11,187.46	-224.77	428,552.33	739,929.02	32.176540	-103.691464
21,500.00	90.00	359.14	10,200.00	11,287.45	-226.27	428,652.32	739,927.52	32.176815	-103.691467
21,600.00	90.00	359.14	10,200.00	11,387.44	-227.77	428,752.31	739,926.02	32.177090	-103.691470
21,700.00	90.00	359.14	10,200.00	11,487.43	-229.27	428,852.29	739,924.53	32.177364	-103.691473
21,800.00	90.00	359.14	10,200.00	11,587.42	-230.77	428,952.28	739,923.03	32.177639	-103.691476
21,900.00	90.00	359.14	10,200.00	11,687.41	-232.27	429,052.27	739,921.53	32.177914	-103.691479
22,000.00	90.00	359.14	10,200.00	11,787.39	-233.77	429,152.26	739,920.03	32.178189	-103.691482
22,100.00	90.00	359.14	10,200.00	11,887.38	-235.27	429,252.25	739,918.53	32.178464	-103.691484
22,200.00	90.00	359.14	10,200.00	11,987.37	-236.77	429,352.24	739,917.03	32.178739	-103.691487
22,300.00	90.00	359.14	10,200.00	12,087.36	-238.27	429,452.23	739,915.53	32.179014	-103.691490
22,400.00	90.00	359.14	10,200.00	12,187.35	-239.77	429,552.21	739,914.03	32.179288	-103.691493
22,500.00	90.00	359.14	10,200.00	12,287.34	-241.27	429,652.20	739,912.53	32.179563	-103.691496
22,600.00	90.00	359.14	10,200.00	12,387.33	-242.76	429,752.19	739,911.03	32.179838	-103.691499
22,700.00	90.00	359.14	10,200.00	12,487.32	-244.26	429,852.18	739,909.53	32.180113	-103.691502
22,800.00	90.00	359.14	10,200.00	12,587.30	-245.76	429,952.17	739,908.03	32.180388	-103.691505
22,900.00	90.00	359.14	10,200.00	12,687.29	-247.26	430,052.16	739,906.53	32.180663	-103.691508
22,993.29	90.00	359.14	10,200.00	12,780.57	-248.66	430,145.44	739,905.14	32.180919	-103.691511
LTP @ 22993' MD, 100' FNL, 1040' FEL									
23,000.00	90.00	359.14	10,200.00	12,787.28	-248.76	430,152.15	739,905.04	32.180938	-103.691511
23,073.29	90.00	359.14	10,200.00	12,860.56	-249.86	430,225.43	739,903.94	32.181139	-103.691513
PBHL; 20' FNL, 1040' FEL									
23,073.30	90.00	359.14	10,200.00	12,860.58	-249.86	430,225.44	739,903.94	32.181139	-103.691513

Design Targets									
Target Name	Dip Angle (°)	Dip Dir. (°)	TVD (ft)	+N/-S (ft)	+E/-W (ft)	Northing (usft)	Easting (usft)	Latitude	Longitude
- hit/miss target									
- Shape									
PBHL - Chincoteague 8-	0.00	0.00	0.00	12,860.58	-249.86	430,225.44	739,903.94	32.181139	-103.691513
- plan misses target center by 10200.00ft at 23073.30ft MD (10200.00 TVD, 12860.58 N, -249.86 E)									
- Point									

Planning Report - Geographic

Database:	EDM r5000.141_Prod US	Local Co-ordinate Reference:	Well Chincoteague 8-32 Fed State Com 524H
Company:	WCDSC Permian NM	TVD Reference:	RKB @ 3463.00ft
Project:	Lea County (NAD83 New Mexico East)	MD Reference:	RKB @ 3463.00ft
Site:	Sec 08-T25S-R32E	North Reference:	Grid
Well:	Chincoteague 8-32 Fed State Com 524H	Survey Calculation Method:	Minimum Curvature
Wellbore:	Wellbore #1		
Design:	Permit Plan 1		

Plan Annotations

Measured Depth (ft)	Vertical Depth (ft)	Local Coordinates		Comment
		+N/-S (ft)	+E/-W (ft)	
9,640.72	9,627.04	-230.00	-315.00	KOP & FTP @ 9641' MD, 2544' FNL, 1040' FEL
12,511.00	10,200.00	2,313.20	-302.34	Cross Section @ 12511' MD, 0' FSL, 1040' FEL
17,791.00	10,200.00	7,592.95	-269.29	Cross Section @ 17791' MD, 0' FSL, 1100' FEL
22,993.29	10,200.00	12,780.57	-248.66	LTP @ 22993' MD, 100' FNL, 1040' FEL
23,073.29	10,200.00	12,860.56	-249.86	PBHL; 20' FNL, 1040' FEL

WELL DETAILS: Chincoteague 8-32 Fed State Com 524H

RKB @ 3463.00π

3438.00

Northing
417364.89

Easting
740153.80

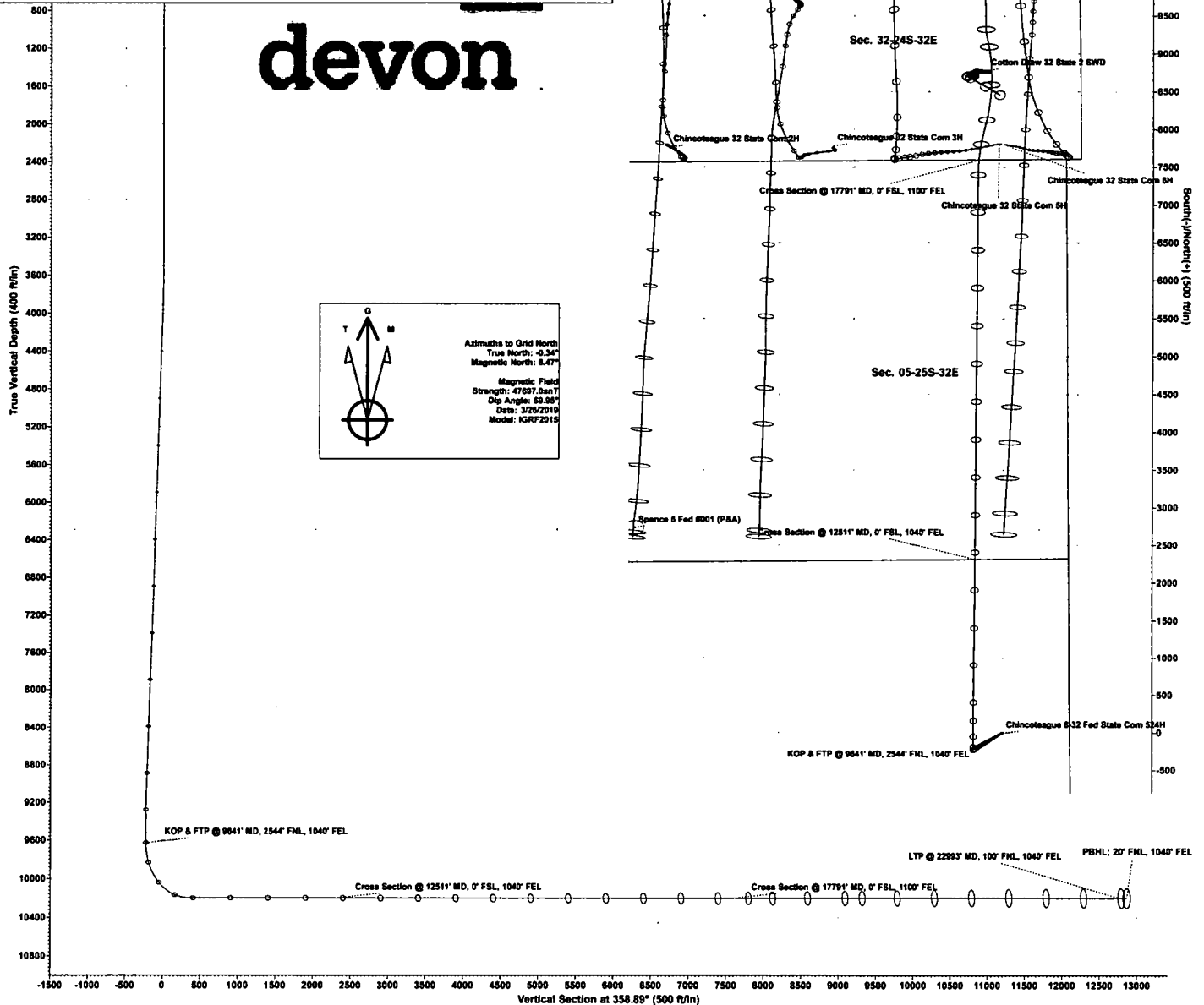
Latitude
32.145784

Longitude
-103.690953

SECTION DETAILS

Permit Plan 1

MD	Inc	Azi	TVD	+N/-S	+E/-W	Dipg	V-Sect	Annotation
0.00	0.00	0.00	0.00	0.00	0.00	0.00	0.00	
3500.00	0.00	0.00	3500.00	0.00	0.00	0.00	0.00	
3910.49	4.10	233.86	3910.13	-8.67	-11.87	1.00	-8.44	
9017.03	4.10	233.86	9033.58	-224.22	-307.09	0.00	-218.21	
9617.58	0.00	0.00	9617.58	0.00	0.00	0.00	-223.84	
9640.72	0.00	0.00	9627.04	-230.00	-315.00	0.00	-223.84	KOP & FTP @ 9641' MD.
10540.73	90.00	0.29	10200.00	342.95	-312.15	10.00	348.95	
17593.88	90.00	0.29	10200.00	7398.01	-277.05	0.00	7400.00	
18129.62	90.00	1.10	10200.00	7928.39	-224.45	2.00	7931.25	
19136.62	90.00	1.10	10200.00	8124.71	-186.29	0.00	8136.80	
19429.62	90.00	349.00	10200.00	9217.97	-186.29	2.00	9219.85	
19531.03	90.00	359.14	10200.00	9318.71	-196.75	10.00	9320.77	
23073.30	90.00	359.14	10200.00	12860.58	-249.86	0.00	12883.00	PBHL; 20' FNL, 1040' FEL



A multibowl wellhead may be used. The BOP will be tested per Onshore Order #2 after installation on the surface casing which will cover testing requirements for a maximum of 30 days. If any seal subject to test pressure is broken the system must be tested.

Devon proposes using a multi-bowl wellhead assembly. This assembly will only be tested when installed on the surface casing. Minimum working pressure of the blowout preventer (BOP) and related equipment (BOPE) required for drilling below the surface casing shoe shall be 5000 (5M) psi.

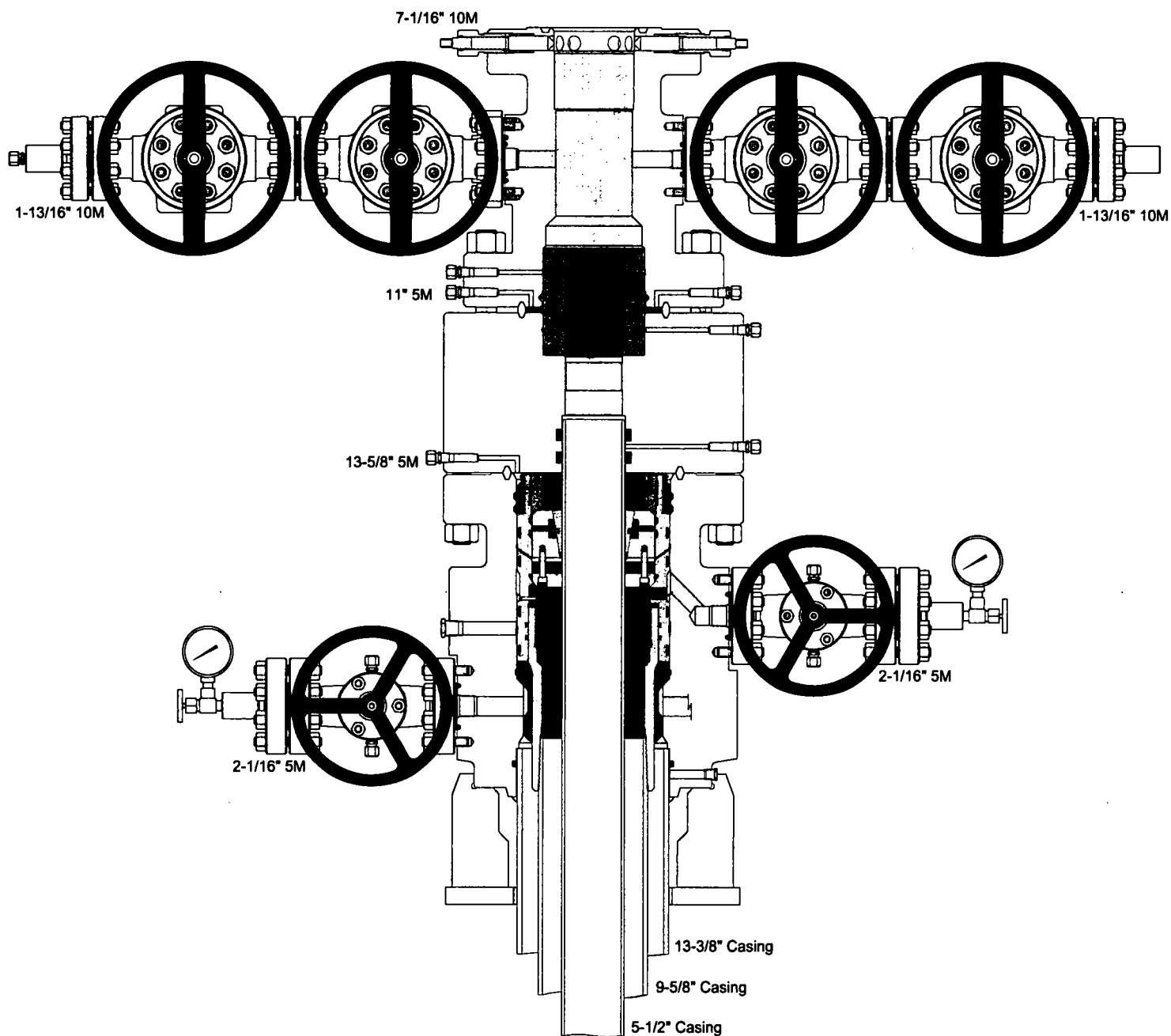
- Wellhead will be installed by wellhead representatives.
- If the welding is performed by a third party, the wellhead representative will monitor the temperature to verify that it does not exceed the maximum temperature of the seal.
- Wellhead representative will install the test plug for the initial BOP test.
- Wellhead company will install a solid steel body pack-off to completely isolate the lower head after cementing intermediate casing. After installation of the pack-off, the pack-off and the lower flange will be tested to 5M, as shown on the attached schematic. Everything above the pack-off will not have been altered whatsoever from the initial nipple up. Therefore the BOP components will not be retested at that time.
- If the cement does not circulate and one inch operations would have been possible with a standard wellhead, the well head will be cut and top out operations will be conducted.
- Devon will pressure test all seals above and below the mandrel (but still above the casing) to full working pressure rating.
- Devon will test the casing to 0.22 psi/ft or 1500 psi, whichever is greater, as per Onshore Order #2.

After running the 13-3/8" surface casing, a 13-5/8" BOP/BOPE system with a minimum rating of 5M will be installed on the wellhead system and will undergo a 250 psi low pressure test followed by a 5,000 psi high pressure test. The 5,000 psi high and 250 psi low test will cover testing requirements a maximum of 30 days, as per Onshore Order #2. If the well is not complete within 30 days of this BOP test, another full BOP test will be conducted, as per Onshore Order #2.

After running the 9-5/8" intermediate casing with a mandrel hanger, the 13-5/8" BOP/BOPE system with a minimum rating of 5M will already be installed on the wellhead.

The pipe rams will be operated and checked each 24 hour period and each time the drill pipe is out of the hole. These tests will be logged in the daily driller's log. A 2" kill line and 3" choke line will be incorporated into the drilling spool below the ram BOP. In addition to the rams and annular preventer, additional BOP accessories include a kelly cock, floor safety valve, choke lines, and choke manifold rated at 5,000 psi WP.

Devon's proposed wellhead manufactures will be FMC Technologies, Cactus Wellhead, or Cameron.



Devon Energy
APD VARIANCE DATA

OPERATOR NAME: Devon Energy

1. SUMMARY OF Variance:

Devon Energy respectfully requests approval for the following additions to the drilling plan:

1. Potential utilization of a spudder rig to pre-set surface casing.

2. Description of Operations

1. A spudder rig contractor may move in their rig to drill the surface hole section and pre-set surface casing on this well.
 - a. After drilling the surface hole section, the rig will run casing and cement following all of the applicable rules and regulations (OnShore Order 2, all COAs and NMOCD regulations).
 - b. Rig will utilize fresh water based mud to drill surface hole to TD.
2. The wellhead will be installed and tested once the surface casing is cut off and the WOC time has been reached.
3. A blind flange with the same pressure rating as the wellhead will be installed to seal the wellbore. Pressure will be monitored with needle valves installed on two wingvalves.
 - a. A means for intervention will be maintained while the drilling rig is not over the well.
4. The BLM will be contacted and notified 24 hours prior to commencing spudder rig operations.
5. Drilling operation will be performed with the big rig. At that time an approved BOP stack will be nipped up and tested on the wellhead before drilling operations commences on each well.
 - a. The BLM will be contacted / notified 24 hours before the big rig moves back on to the pad with the pre-set surface casing.
6. Devon Energy will have supervision on the rig to ensure compliance with all BLM and NMOCD regulations and to oversee operations.
7. Once the rig is removed, Devon Energy will secure the wellhead area by placing a guard rail around the cellar area.



U.S. Department of the Interior
BUREAU OF LAND MANAGEMENT

PWD Data Report

10/24/2019

APD ID: 10400040700

Submission Date: 04/10/2019

Operator Name: DEVON ENERGY PRODUCTION COMPANY LP

Well Name: CHINCOTEAGUE 8-32 FED ST COM

Well Number: 524H

Well Type: OIL WELL

Well Work Type: Drill

Section 1 - General

Would you like to address long-term produced water disposal? NO

Section 2 - Lined Pits

Would you like to utilize Lined Pit PWD options? NO

Produced Water Disposal (PWD) Location:

PWD surface owner:

PWD disturbance (acres):

Lined pit PWD on or off channel:

Lined pit PWD discharge volume (bbl/day):

Lined pit specifications:

Pit liner description:

Pit liner manufacturers information:

Precipitated solids disposal:

Describe precipitated solids disposal:

Precipitated solids disposal permit:

Lined pit precipitated solids disposal schedule:

Lined pit precipitated solids disposal schedule attachment:

Lined pit reclamation description:

Lined pit reclamation attachment:

Leak detection system description:

Leak detection system attachment:

Operator Name: DEVON ENERGY PRODUCTION COMPANY LP

Well Name: CHINCOTEAGUE 8-32 FED ST COM

Well Number: 524H

Lined pit Monitor description:

Lined pit Monitor attachment:

Lined pit: do you have a reclamation bond for the pit?

Is the reclamation bond a rider under the BLM bond?

Lined pit bond number:

Lined pit bond amount:

Additional bond information attachment:

Section 3 - Unlined Pits

Would you like to utilize Unlined Pit PWD options? NO

Produced Water Disposal (PWD) Location:

PWD disturbance (acres):

PWD surface owner:

Unlined pit PWD on or off channel:

Unlined pit PWD discharge volume (bbl/day):

Unlined pit specifications:

Precipitated solids disposal:

Describe precipitated solids disposal:

Precipitated solids disposal permit:

Unlined pit precipitated solids disposal schedule:

Unlined pit precipitated solids disposal schedule attachment:

Unlined pit reclamation description:

Unlined pit reclamation attachment:

Unlined pit Monitor description:

Unlined pit Monitor attachment:

Do you propose to put the produced water to beneficial use?

Beneficial use user confirmation:

Estimated depth of the shallowest aquifer (feet):

Does the produced water have an annual average Total Dissolved Solids (TDS) concentration equal to or less than that of the existing water to be protected?

TDS lab results:

Geologic and hydrologic evidence:

State authorization:

Unlined Produced Water Pit Estimated percolation:

Unlined pit: do you have a reclamation bond for the pit?

Operator Name: DEVON ENERGY PRODUCTION COMPANY LP

Well Name: CHINCOTEAGUE 8-32 FED ST COM

Well Number: 524H

Is the reclamation bond a rider under the BLM bond?

Unlined pit bond number:

Unlined pit bond amount:

Additional bond information attachment:

Section 4 - Injection

Would you like to utilize Injection PWD options? NO

Produced Water Disposal (PWD) Location:

PWD surface owner:

PWD disturbance (acres):

Injection PWD discharge volume (bbl/day):

Injection well mineral owner:

Injection well type:

Injection well number:

Injection well name:

Assigned injection well API number?

Injection well API number:

Injection well new surface disturbance (acres):

Minerals protection information:

Mineral protection attachment:

Underground Injection Control (UIC) Permit?

UIC Permit attachment:

Section 5 - Surface Discharge

Would you like to utilize Surface Discharge PWD options? NO

Produced Water Disposal (PWD) Location:

PWD surface owner:

PWD disturbance (acres):

Surface discharge PWD discharge volume (bbl/day):

Surface Discharge NPDES Permit?

Surface Discharge NPDES Permit attachment:

Surface Discharge site facilities information:

Surface discharge site facilities map:

Section 6 - Other

Would you like to utilize Other PWD options? NO

Produced Water Disposal (PWD) Location:

PWD surface owner:

PWD disturbance (acres):

Other PWD discharge volume (bbl/day):

Operator Name: DEVON ENERGY PRODUCTION COMPANY LP

Well Name: CHINCOTEAGUE 8-32 FED ST COM

Well Number: 524H

Other PWD type description:

Other PWD type attachment:

Have other regulatory requirements been met?

Other regulatory requirements attachment:



U.S. Department of the Interior
BUREAU OF LAND MANAGEMENT

Bond Info Data Report

10/24/2019

APD ID: 10400040700

Submission Date: 04/10/2019

Operator Name: DEVON ENERGY PRODUCTION COMPANY LP

Well Name: CHINCOTEAGUE 8-32 FED ST COM

Well Number: 524H

Well Type: OIL WELL

Well Work Type: Drill

[Show Final Text](#)

Bond Information

Federal/Indian APD: FED

BLM Bond number: NMB000801

BIA Bond number:

Do you have a reclamation bond? NO

Is the reclamation bond a rider under the BLM bond?

Is the reclamation bond BLM or Forest Service?

BLM reclamation bond number:

Forest Service reclamation bond number:

Forest Service reclamation bond attachment:

Reclamation bond number:

Reclamation bond amount:

Reclamation bond rider amount:

Additional reclamation bond information attachment: