

District I  
1625 N. French Dr., Hobbs, NM 88240  
Phone: (575) 393-6161 Fax: (575) 393-0720  
District II  
811 S. First St., Artesia, NM 88210  
Phone: (575) 748-1283 Fax: (575) 748-9720  
District III  
1000 Rio Brazos Road, Aztec, NM 87410  
Phone: (505) 334-6178 Fax: (505) 334-6170  
District IV  
1220 S. St. Francis Dr., Santa Fe, NM 87505  
Phone: (505) 476-3460 Fax: (505) 476-3462

State of New Mexico  
Energy, Minerals & Natural Resources  
Department  
OIL CONSERVATION DIVISION NOV 20 2019  
1220 South St. Francis Dr.  
Santa Fe, NM 87505

FORM C-102  
Revised August 1, 2011  
Submit one copy to appropriate  
District Office

RECEIVED AMENDED REPORT

WELL LOCATION AND ACREAGE DEDICATION PLAT

<sup>1</sup> API Number 30-025-46032	<sup>2</sup> Pool Code 97964	<sup>3</sup> Pool Name WC025 G07 S243225C; LOWER BONE SPRING
<sup>4</sup> Property Code 325728	<sup>5</sup> Property Name ADDER 31 STATE	<sup>6</sup> Well Number #504H
<sup>7</sup> OGRID No. 7377	<sup>8</sup> Operator Name EOG RESOURCES, INC.	<sup>9</sup> Elevation 3502'

<sup>10</sup>Surface Location

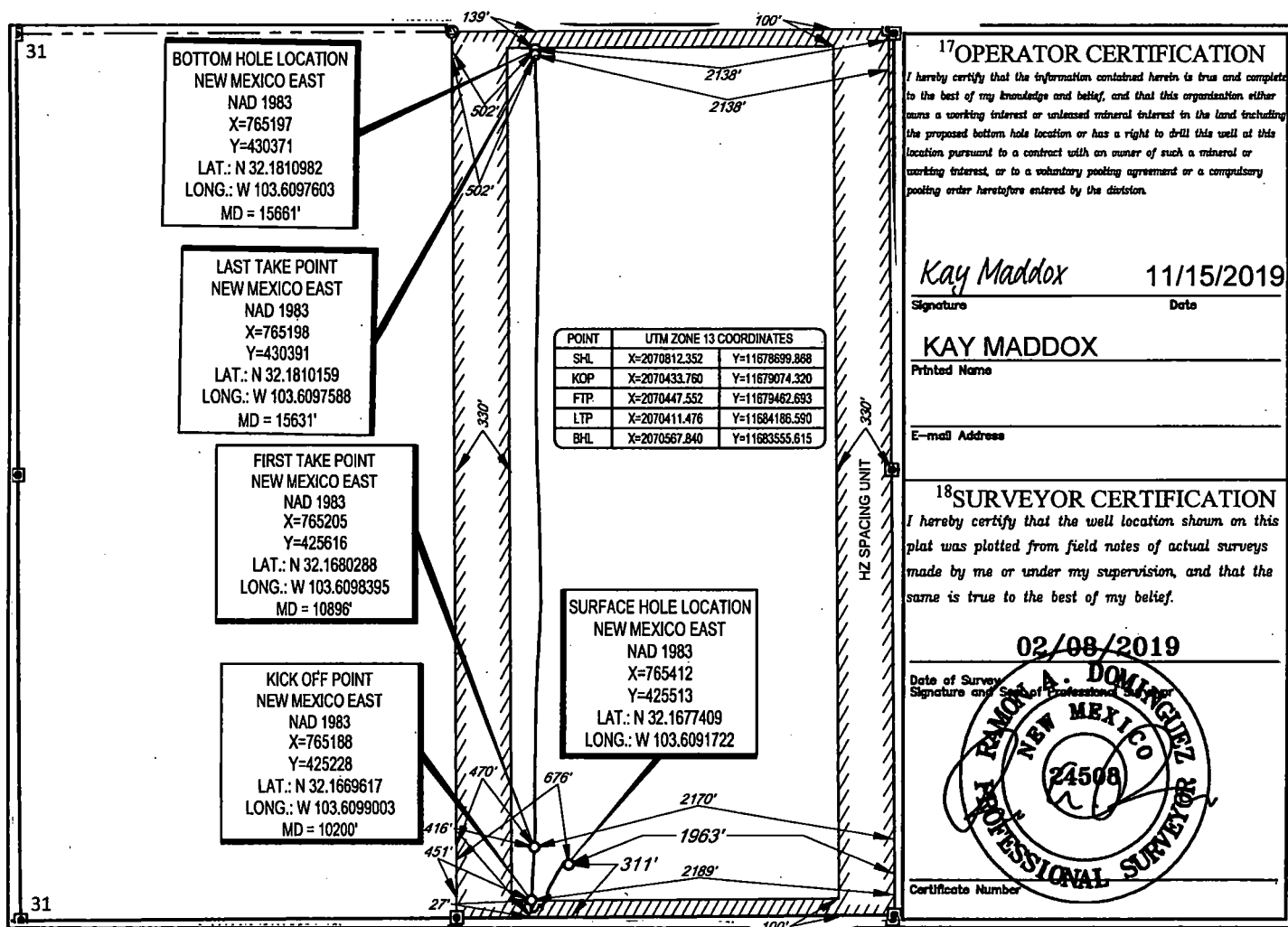
UL or lot no.	Section	Township	Range	Lot Idn	Feet from the	North/South line	Feet from the	East/West line	County
0	31	24-S	33-E	-D	311'	SOUTH	1963'	EAST	LEA

<sup>11</sup>Bottom Hole Location If Different From Surface

UL or lot no.	Section	Township	Range	Lot Idn	Feet from the	North/South line	Feet from the	East/West line	County
B	31	24-S	33-E	-B	139'	NORTH	2138'	EAST	LEA

<sup>12</sup> Dedicated Acres 320	<sup>13</sup> Joint or Infill	<sup>14</sup> Consolidation Code	<sup>15</sup> Order No.
--------------------------------------	-------------------------------	----------------------------------	-------------------------

No allowable will be assigned to this completion until all interests have been consolidated or a non-standard unit has been approved by the division.



SECTION 31, TOWNSHIP 24-S, RANGE 33-E, N.M.P.M.  
LEA COUNTY, NEW MEXICO

SCALE: 1" = 1000'

0' 500' 1000'

FND. BRASS CAP,  
U.S. G.L.O. SUR.

FND. BRASS CAP,  
U.S. G.L.O. SUR.  
1913

FND. BRASS CAP,  
U.S. G.L.O. SUR.

FND. BRASS CAP,  
U.S. G.L.O. SUR.  
1913

FND. BRASS CAP,  
U.S. G.L.O. SUR.  
1913

FND. BRASS CAP,  
U.S. G.L.O. SUR.

**BOTTOM HOLE LOCATION**  
NEW MEXICO EAST  
NAD 1983  
X=765197  
Y=430371  
LAT.: N 32.1810982  
LONG.: W 103.6097603  
MD = 15661'

**LAST TAKE POINT**  
NEW MEXICO EAST  
NAD 1983  
X=765198  
Y=430391  
LAT.: N 32.1810159  
LONG.: W 103.6097588  
MD = 15631'

**FIRST TAKE POINT**  
NEW MEXICO EAST  
NAD 1983  
X=765205  
Y=425616  
LAT.: N 32.1680288  
LONG.: W 103.6098395  
MD = 10896'

**KICK OFF POINT**  
NEW MEXICO EAST  
NAD 1983  
X=765188  
Y=425228  
LAT.: N 32.1669617  
LONG.: W 103.6099003  
MD = 10200'

POINT	UTM ZONE 13 COORDINATES
SHL	X=2070812.352 Y=11678699.868
KOP	X=2070433.760 Y=11679074.320
FTP	X=2070447.552 Y=11679462.693
LTP	X=2070411.476 Y=11684186.590
BHL	X=2070567.840 Y=11683555.615

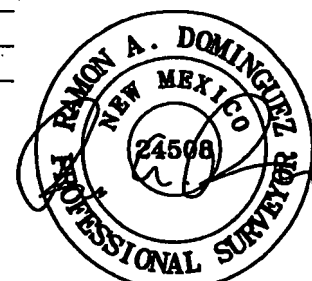
**SURFACE HOLE LOCATION**  
NEW MEXICO EAST  
NAD 1983  
X=765412  
Y=425513  
LAT.: N 32.1677409  
LONG.: W 103.6091722

LEASE NAME & WELL NO.: ADDER 31 STATE 504H  
SECTION 31 TWP 24-S RGE 33-E SURVEY N.M.P.M.  
COUNTY LEA STATE NM ELEVATION 3502'  
DESCRIPTION 311' FSL & 1963' FEL



**TOPOGRAPHIC**  
LOYALTY INNOVATION LEGACY

1400 EVERMAN PARKWAY, Ste. 146 • FT. WORTH, TEXAS 76140  
TELEPHONE: (817) 744-7512 • FAX (817) 744-7554  
2603 NORTH BIG SPRING • MIDLAND, TEXAS 79705  
TELEPHONE: (432) 682-1653 OR (800) 767-1653 • FAX (432) 682-1743  
WWW.TOPOGRAPHIC.COM



Ramon A. Dominguez, P.S. No. 24508



<b>ADDER 31 STATE 504H</b> <b>AS-COMPLETED</b> DATE: 10/29/2019 FILE: AD_ADDER_31_STATE_504H DRAWN BY: TRG SHEET: 1 OF 1	REVISION:	<b>NOTES:</b> 1. ORIGINAL DOCUMENT SIZE: 8.5" X 11" 2. ALL BEARINGS, DISTANCES, AND COORDINATE VALUES CONTAINED HEREIN ARE GRID BASED UPON THE NEW MEXICO COORDINATE SYSTEM OF 1983, EAST ZONE, U.S. SURVEY FEET. 3. THIS WELL LOCATION SHOWN HEREON HAS BEEN SURVEYED ON THE GROUND UNDER MY SUPERVISION AND PREPARED ACCORDING TO THE EVIDENCE FOUND AT THE TIME OF SURVEY, AND DATA PROVIDED BY EOG RESOURCES, INC. THIS CERTIFICATION IS MADE AND LIMITED TO THOSE PERSONS OR ENTITIES SHOWN ON THE FACE OF THIS PLAT AND IS NON-TRANSFERABLE. THIS SURVEY IS CERTIFIED FOR THIS TRANSACTION ONLY.

**HOBBS OCD**  
NOV 20 2019  
**RECEIVED**

Intent ☐ As Drilled ☒ XXX

API # 30-025-46032			
Operator Name: EOG RESOURCES, INC		Property Name: ADDER 31 STATE	Well Number 504H

**Kick Off Point (KOP)**

UL O	Section 31	Township 24S	Range 33E	Lot	Feet 27	From N/S SOUTH	Feet 2189	From E/W EAST	County LEA
Latitude 32.1669617					Longitude 103.6099003				NAD 1983

**First Take Point (FTP)**

UL B	Section 31	Township 24S	Range 33E	Lot	Feet 416	From N/S SOUTH	Feet 2170	From E/W EAST	County LEA
Latitude 32.1680288					Longitude 103.6098395				NAD 1983

**Last Take Point (LTP)**

UL B	Section 31	Township 24S	Range 33E	Lot	Feet 142	From N/S NORTH	Feet 2138	From E/W EAST	County LEA
Latitude 32.1810159					Longitude 103.6097588				NAD 1983

Is this well the defining well for the Horizontal Spacing Unit? ☒ YES

Is this well an infill well? ☐ NO

If infill is yes please provide API if available, Operator Name and well number for Defining well for Horizontal Spacing Unit.

API #			
Operator Name: EOG RESOURCES, INC		Property Name:	Well Number

KZ 06/29/2018