

District I  
1625 N. French Dr., Hobbs, NM 88240  
Phone: (575) 393-6161 Fax: (575) 393-0720  
District II  
811 S. First St., Artesia, NM 88210  
Phone: (575) 748-1283 Fax: (575) 748-9720  
District III  
1000 Rio Brazos Road, Aztec, NM 87410  
Phone: (505) 334-6178 Fax: (505) 334-6170  
District IV  
1220 S. St. Francis Dr., Santa Fe, NM 87505  
Phone: (505) 476-3460 Fax: (505) 476-3462

State of New Mexico  
Energy, Minerals & Natural Resources  
Department  
OIL CONSERVATION DIVISION  
1220 South St. Francis Dr.  
Santa Fe, NM 87505

**HOBBS OCD**  
JAN 07 2020  
**RECEIVED**

FORM C-102  
Revised August 1, 2011  
Submit one copy to appropriate  
District Office  
☐ AMENDED REPORT

**WELL LOCATION AND ACREAGE DEDICATION PLAT**

<sup>1</sup> API Number 30-025-45328	<sup>2</sup> Pool Code 51687	<sup>3</sup> Pool Name RED TANK; BONE SPRING, EAST
<sup>4</sup> Property Code 317388	<sup>5</sup> Property Name SPEEDY 16 STATE COM	<sup>6</sup> Well Number #301H
<sup>7</sup> OGRID No. 7377	<sup>8</sup> Operator Name EOG RESOURCES, INC.	<sup>9</sup> Elevation 3570'

<sup>10</sup>Surface Location

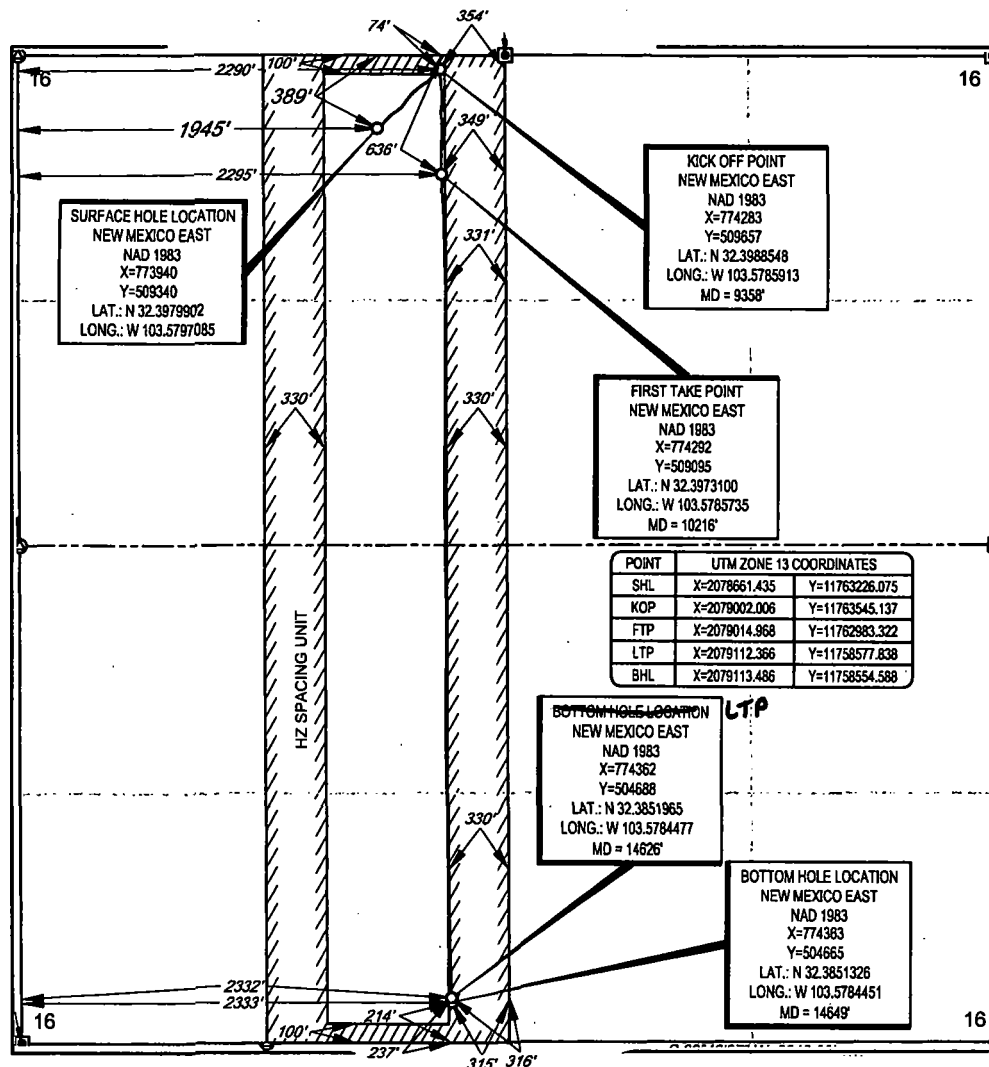
UL or lot no.	Section	Township	Range	Lot Idn	Feet from the	North/South line	Feet from the	East/West line	County
C	16	22-S	33-E	-	389'	NORTH	1945'	WEST	LEA

<sup>11</sup>Bottom Hole Location If Different From Surface

UL or lot no.	Section	Township	Range	Lot Idn	Feet from the	North/South line	Feet from the	East/West line	County
N	16	22-S	33-E	-	214'	SOUTH	2333'	WEST	LEA

<sup>12</sup> Dedicated Acres 160.00	<sup>13</sup> Joint or Infill	<sup>14</sup> Consolidation Code	<sup>15</sup> Order No.
---	-------------------------------	----------------------------------	-------------------------

No allowable will be assigned to this completion until all interests have been consolidated or a non-standard unit has been approved by the division.



**17 OPERATOR CERTIFICATION**  
I hereby certify that the information contained herein is true and complete to the best of my knowledge and belief, and that this organization either owns a working interest or unleased mineral interest in the land including the proposed bottom hole location or has a right to drill this well at this location pursuant to a contract with an owner of such a mineral or working interest, or to a voluntary pooling agreement or a compulsory pooling order heretofore entered by the division.

*Kay Maddox* 01/06/2020  
Signature Date

*Kay Maddox*  
Printed Name

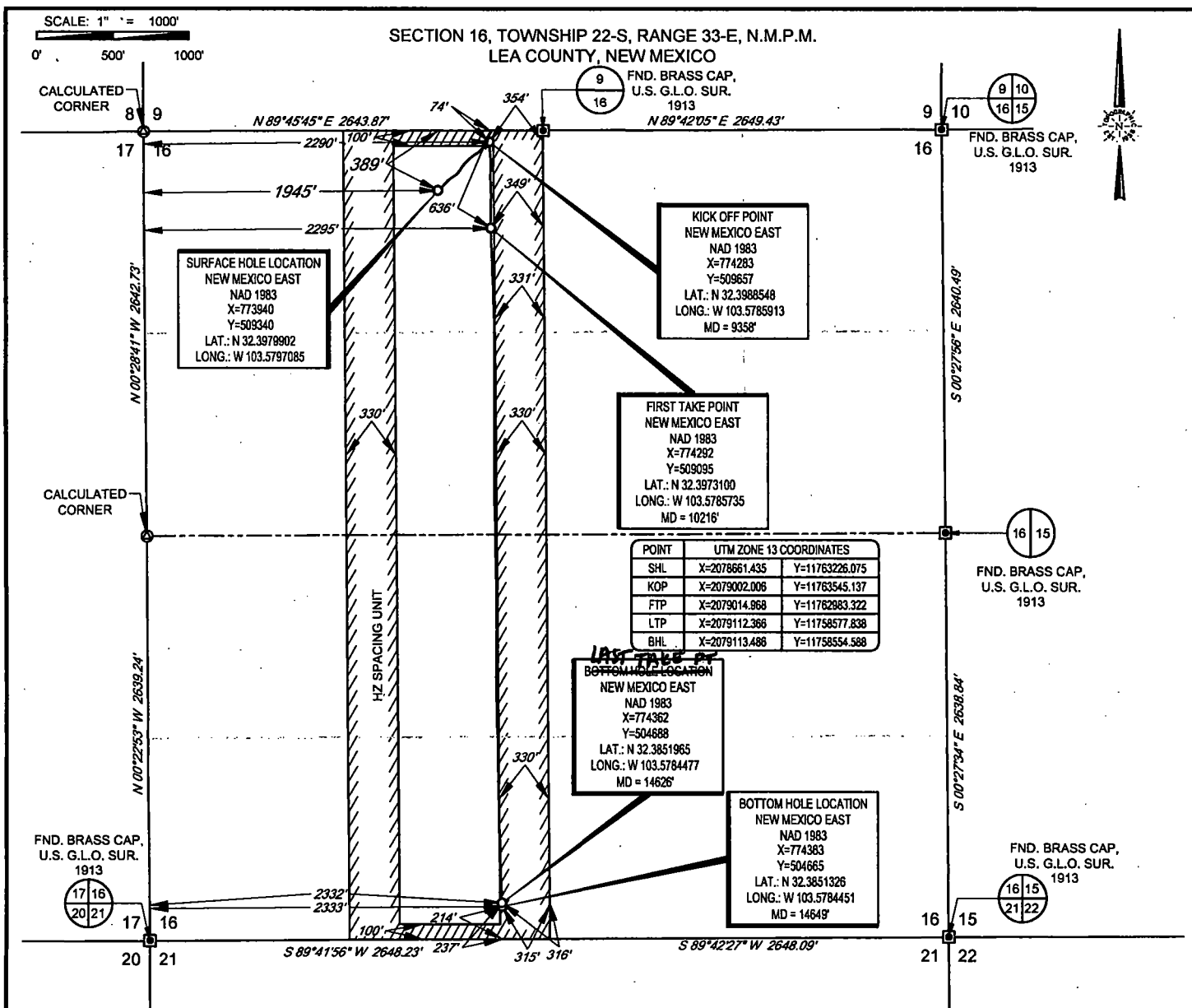
*Kay\_Maddox@eogresources.com*  
E-mail Address

**18 SURVEYOR CERTIFICATION**  
I hereby certify that the well location shown on this plat was plotted from field notes of actual surveys made by me or under my supervision, and that the same is true to the best of my belief.

10/17/2018  
Date of Survey  
*MICHAEL BROWN*  
Signature of Professional Surveyor

NEW MEXICO  
18329  
PROFESSIONAL SURVEYOR

Certificate Number



LEASE NAME & WELL NO.: \_\_\_\_\_ SPEEDY 16 STATE COM #301H

SECTION 16 TWP 22-S RGE 33-E SURVEY N.M.P.M.

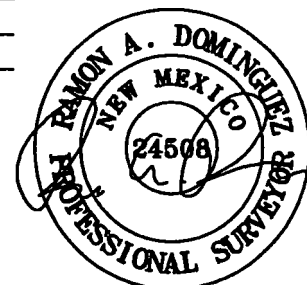
COUNTY LEA STATE NM ELEVATION 3568'

DESCRIPTION 1945' FWL & 389' FNL



**TOPOGRAPHIC**  
LOYALTY INNOVATION LEGACY

1400 EVERMAN PARKWAY, Ste. 148 • FT. WORTH, TEXAS 76140  
TELEPHONE: (817) 744-7512 • FAX: (817) 744-7554  
2803 NORTH BIG SPRING • MIDLAND, TEXAS 79705  
TELEPHONE: (432) 682-1853 OR (800) 767-1653 • FAX: (432) 682-1743  
WWW.TOPOGRAPHIC.COM



Ramon Dominguez, P.S. No. 24508  
DECEMBER 4, 2019

**Geog resources, Inc.**

<b>SPEEDY 16 STATE COM #301H AS-COMPLETED</b>  <b>DATE:</b> 12/03/19 <b>FILE:</b> AD_SPEEDY_16_STATE_COM_301H <b>DRAWN BY:</b> TRG <b>SHEET:</b> 1 OF 1	<b>REVISION:</b> _____ _____ _____ _____ _____	<b>NOTES:</b> 1. ORIGINAL DOCUMENT SIZE: 8.5" X 11" 2. ALL BEARINGS, DISTANCES, AND COORDINATE VALUES CONTAINED HEREIN ARE GRID BASED UPON THE NEW MEXICO COORDINATE SYSTEM OF 1983, EAST ZONE, U.S. SURVEY FEET. 3. THIS WELL LOCATION SHOWN HEREON HAS BEEN SURVEYED ON THE GROUND UNDER MY SUPERVISION AND PREPARED ACCORDING TO THE EVIDENCE FOUND AT THE TIME OF SURVEY, AND DATA PROVIDED BY EOG RESOURCES, INC. THIS CERTIFICATION IS MADE AND LIMITED TO THOSE PERSONS OR ENTITIES SHOWN ON THE FACE OF THIS PLAT AND IS NON-TRANSFERABLE. THIS SURVEY IS CERTIFIED FOR THIS TRANSACTION ONLY.

Intent ☐ As Drilled ☒ XXX

API #  
30-025-45328

Operator Name: EOG RESOURCES, INC	Property Name: SPEEDY 16 STATE COM	Well Number 301H
--------------------------------------	---------------------------------------	---------------------

Kick Off Point (KOP)

UL C	Section 16	Township 22S	Range 33E	Lot	Feet 74	From N/S NORTH	Feet 2290	From E/W WEST	County LEA
Latitude 32.3988548					Longitude 103.5785913			NAD 1983	

First Take Point (FTP)

UL C	Section 16	Township 22S	Range 33E	Lot	Feet 636	From N/S NORTH	Feet 2295	From E/W WEST	County LEA
Latitude 32.3973100					Longitude 103.5785735			NAD 1983	

Last Take Point (LTP)

UL N	Section 16	Township 22S	Range 33E	Lot	Feet 237	From N/S SOUTH	Feet 2332	From E/W WEST	County LEA
Latitude 32.3851965					Longitude 103.5784477			NAD 1983	

Is this well the defining well for the Horizontal Spacing Unit? ☐ NO

Is this well an infill well? ☐ YES

If infill is yes please provide API if available, Operator Name and well number for Defining well for Horizontal Spacing Unit.

API #  
30-025-45327

Operator Name: EOG RESOURCES, INC	Property Name: SPEEDY 16 STATE COM	Well Number 203H
--------------------------------------	---------------------------------------	---------------------

KZ 06/29/2018