

District I  
1625 N. French Dr., Hobbs, NM 88240  
Phone: (575) 393-6161 Fax: (575) 393-0720  
District II  
811 S. First St., Artesia, NM 88210  
Phone: (575) 748-1283 Fax: (575) 748-9720  
District III  
1000 Rio Brazos Road, Aztec, NM 87410  
Phone: (505) 334-6178 Fax: (505) 334-6170  
District IV  
1220 S. St. Francis Dr., Santa Fe, NM 87505  
Phone: (505) 476-3460 Fax: (505) 476-3462

State of New Mexico  
Energy, Minerals & Natural Resources Department  
**OIL CONSERVATION DIVISION**  
1220 South St. Francis  
Santa Fe, NM 87505

Form C-102  
Revised August 1, 2011  
Submit one copy to appropriate  
District Office

AMENDED REPORT

FEB 10 2020

**WELL LOCATION AND ACREAGE DEDICATION**

1 APT. Number 30-025-46118		2 Pool Code 97994		3 Well Name WC-025 G-08 9255329D; UPR BONE SPRING	
4 Property Code 319775		5 Property Name VACA DRAW 20-17 FEDERAL		6 Well Number 45H	
7 OCHRD No. 215099		8 Operator Name CIMAREX ENERGY CO.		9 Elevation 3406.7	

**Surface Location**

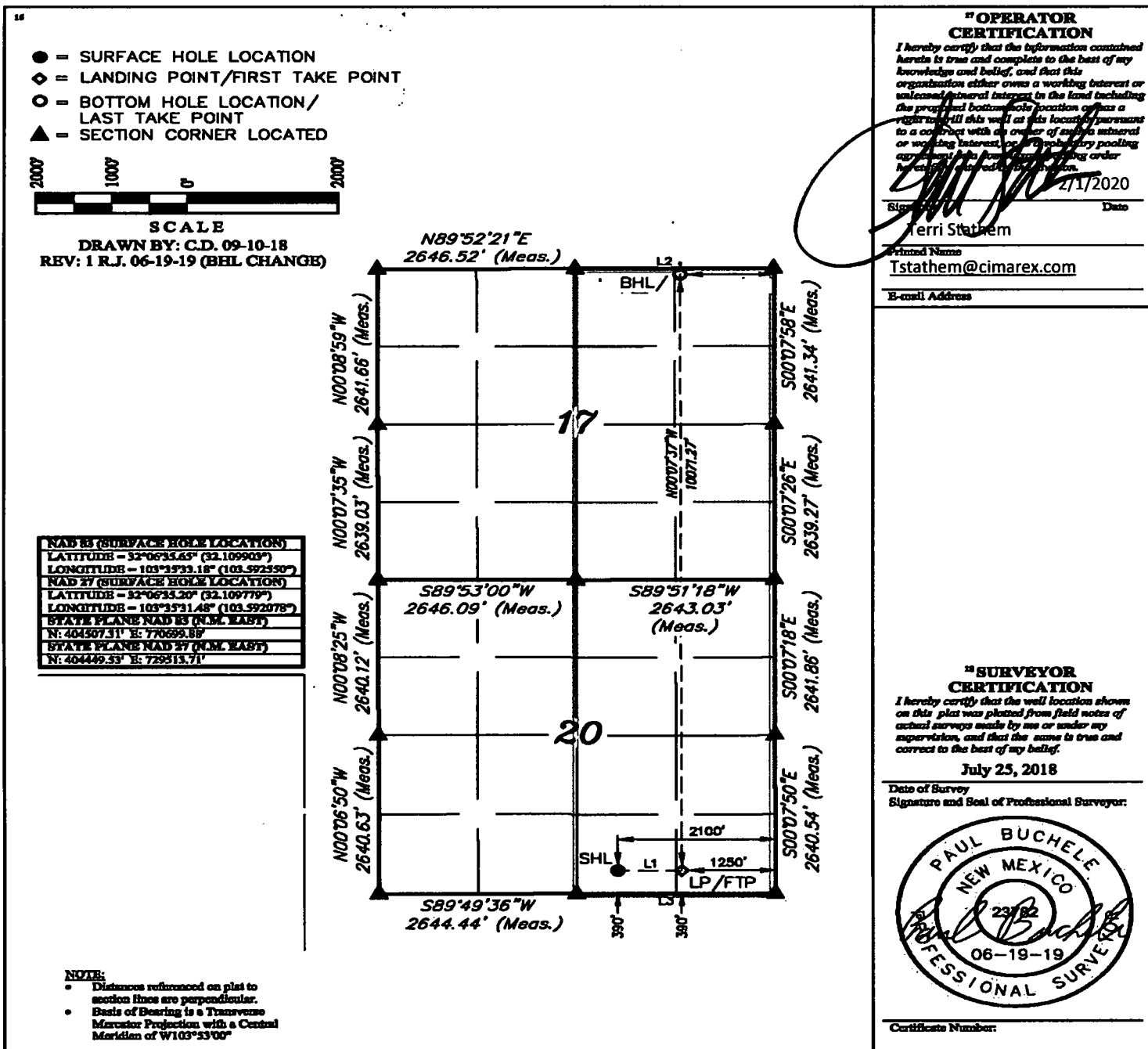
UL or lot no.	Section	Township	Range	Lot Idn	Feet from the	North/South line	Feet from the	East/West line	County
O	20	25S	33E		390	SOUTH	2100	EAST	LEA

**Bottom Hole Location If Different From Surface**

UL or lot no.	Section	Township	Range	Lot Idn	Feet from the	North/South line	Feet from the	East/West line	County
B	17	25S	33E		100	NORTH	1236	EAST	LEA

10 Dedicated Acres 640	11 Joint or Infill	12 Consolidation Code	13 Order No.
---------------------------	--------------------	-----------------------	--------------

No allowable will be assigned to this completion until all interests have been consolidated or a non-standard unit has been approved by the division.



Intent  As Drilled

API # 30-025-46118		
Operator Name: Cimarex Energy Co. (215099)	Property Name: Vaca Draw 20-17 Federal	Well Number 45H

Kick Off Point (KOP)

UL	Section	Township	Range	Lot	Feet	From N/S	Feet	From E/W	County
O	20	25S	33E		378	South	1230	East	Lea
Latitude 32.109861					Longitude -103.589742				NAD 83

First Take Point (FTP)

UL	Section	Township	Range	Lot	Feet	From N/S	Feet	From E/W	County
O	20	25S	33E		890	South	1250	East	Lea
Latitude 32.111269					Longitude -103.589806				NAD 83

Last Take Point (LTP)

UL	Section	Township	Range	Lot	Feet	From N/S	Feet	From E/W	County
B	17	25S	33E		141	North	1238	East	Lea
Latitude 32.137464					Longitude -103.58975				NAD 83

Is this well the defining well for the Horizontal Spacing Unit?  NO

Is this well an infill well?  YES

If infill is yes please provide API if available, Operator Name and well number for Defining well for Horizontal Spacing Unit.

API # 30-025-46117		
Operator Name: Cimarex Energy Co.	Property Name: VACA DRAW 20-17 FEDERAL	Well Number 44H

KZ 06/29/2018