

DISTRICT I  
1625 N. FRENCH DR., HOBBS, NM 88240  
Phone: (575) 393-6191 Fax: (575) 393-0720

DISTRICT II  
811 S. FIRST ST., ARTESIA, NM 88401  
Phone: (575) 748-1283 Fax: (575) 748-8723

DISTRICT III  
1000 RIO BRAZOS RD., AZTEC, NM 87410  
Phone: (505) 334-6178 Fax: (505) 334-6179

DISTRICT IV  
1220 S. ST. FRANCIS DR., SANTA FE, NM 87505  
Phone: (505) 476-3460 Fax: (505) 476-3462

State of New Mexico  
Energy, Minerals & Natural Resources Department  
**OIL CONSERVATION DIVISION**  
1220 SOUTH ST. FRANCIS DR.  
Santa Fe, New Mexico 87505

Form C-102  
Revised August 1, 2011  
Submit one copy to appropriate  
District Office

FEB 27 2020

☐ AMENDED REPORT

RECEIVED

DEDICATION AND ACREAGE DEDICATION PLAT

API Number 30-025-45793	Pool Code 98116	Pool Name WC-025 G-09 S253402N; WOLFCAMP
Property Code 319803	Property Name BASEBALL CAP FEDERAL COM	Well Number 701H
OGRID No. 229137	Operator Name COG OPERATING, LLC	Elevation 3377.1'

Surface Location

UL or lot No. P	Section 25	Township 24-S	Range 34-E	Lot Idn	Feet from the 430	North/South line SOUTH	Feet from the 1110	East/West line EAST	County LEA
--------------------	---------------	------------------	---------------	---------	----------------------	---------------------------	-----------------------	------------------------	---------------

Bottom Hole Location If Different From Surface

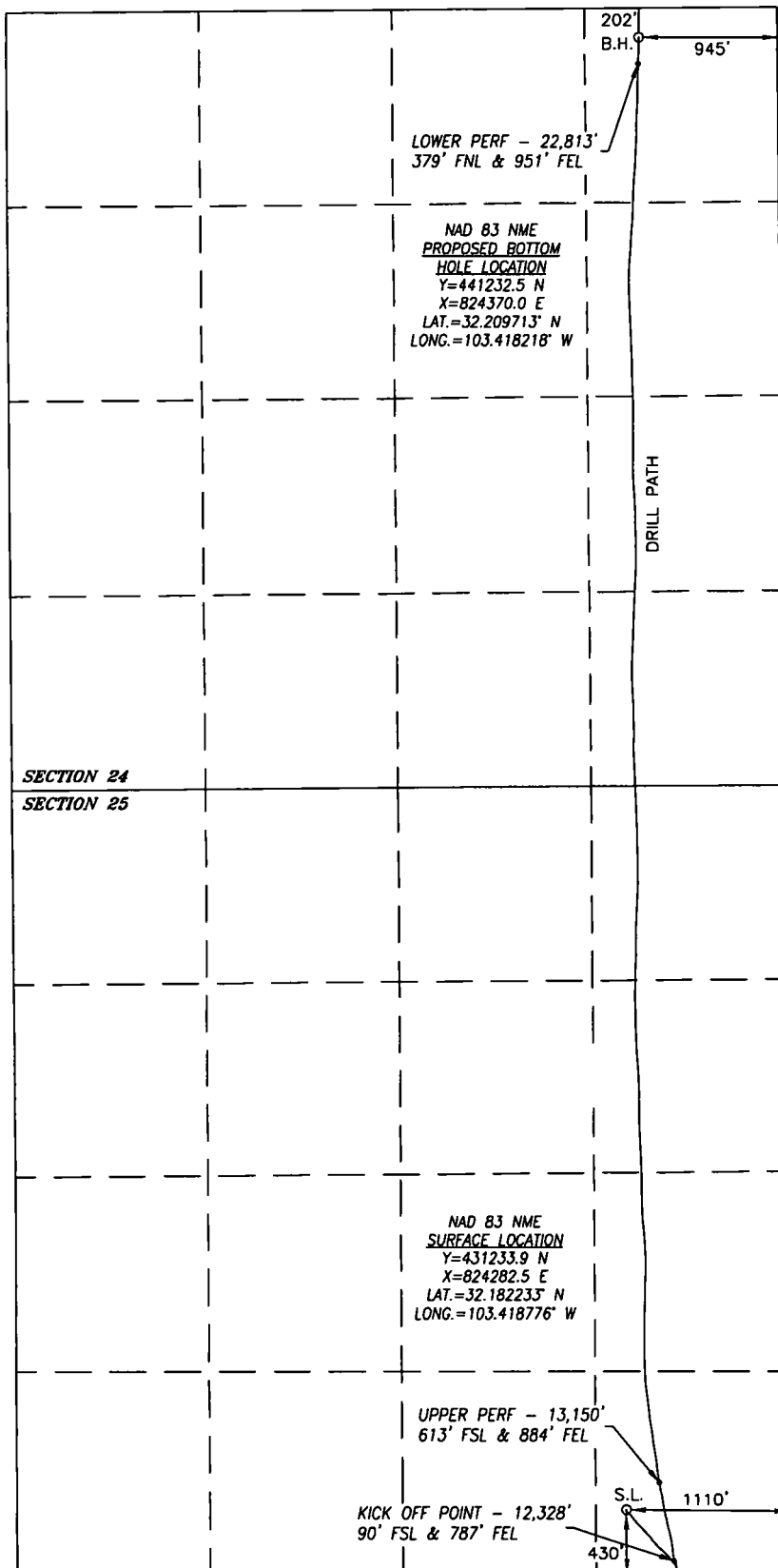
UL or lot No. A	Section 24	Township 24-S	Range 34-E	Lot Idn	Feet from the 202	North/South line NORTH	Feet from the 945	East/West line EAST	County LEA
--------------------	---------------	------------------	---------------	---------	----------------------	---------------------------	----------------------	------------------------	---------------

Dedicated Acres 320	Joint or Infill	Consolidation Code	Order No.
------------------------	-----------------	--------------------	-----------

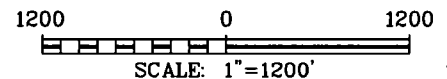
NO ALLOWABLE WILL BE ASSIGNED TO THIS COMPLETION UNTIL ALL INTERESTS HAVE BEEN CONSOLIDATED  
OR A NON-STANDARD UNIT HAS BEEN APPROVED BY THE DIVISION

SEE PAGE 2

Property Code 319803	Property Name BASEBALL CAP FEDERAL COM	Well Number 701H
OGRID No. 229137	Operator Name COG OPERATING, LLC	Elevation 3377.1'



SURFACE INFO AND BOREPATH SHOWN HEREON  
IS BASED ON DIRECTIONAL SURVEY REPORT  
PROVIDED BY COG OPERATING, LLC FOR THE  
BASEBALL CAP FEDERAL COM #701H SUPPLIED  
TO HARCROW SURVEYING, LLC ON FEBRUARY  
18, 2020



#### OPERATOR CERTIFICATION

I hereby certify that the information  
herein is true and complete to the best of  
my knowledge and belief, and that this  
organization either owns a working interest  
or unleased mineral interest in the land  
including the proposed bottom hole location  
or has a right to drill this well at this  
location pursuant to a contract with an  
owner of such mineral or working interest,  
or to a voluntary pooling agreement or a  
compulsory pooling order heretofore entered  
by the division.

*Amanda Avery* 2/20/20  
Signature Date

Amanda Avery

Printed Name

aavery@concho.com

E-mail Address

#### SURVEYOR CERTIFICATION

I hereby certify that the well location  
shown on this plat was plotted from field  
notes of actual surveys made by me or  
under my supervision, and that the same is  
true and correct to the best of my belief.

MAR. 9, 2018/OCT. 1, 2019

Date of Survey/Date of Geographic Survey

Signature & Seal of Professional Surveyor



*Chad Harcrow* 2/20/20  
Certificate No. CHAD HARCROW 17777

Intent ☐ As Drilled ☒

API # 30-025-45793		
Operator Name: COG OPERATING, LLC	Property Name: BASEBALL CAP FEDERAL COM	Well Number 701H

Kick Off Point (KOP)

UL P	Section 25	Township 24S	Range 34E	Lot	Feet 90	From N/S SOUTH	Feet 787	From E/W EAST	County LEA
Latitude 32.181283					Longitude -103.417737				NAD 83

First Take Point (FTP)

UL P	Section 25	Township 24S	Range 34E	Lot	Feet 613	From N/S SOUTH	Feet 884	From E/W EAST	County LEA
Latitude 32.182727					Longitude -103.418041				NAD 83

Last Take Point (LTP)

UL A	Section 24	Township 24S	Range 34E	Lot	Feet 379	From N/S NORTH	Feet 951	From E/W EAST	County LEA
Latitude 32.209227					Longitude -103.418238				NAD 83

Is this well the defining well for the Horizontal Spacing Unit? ☒ Yes

Is this well an infill well? ☐

If infill is yes please provide API if available, Operator Name and well number for Defining well for Horizontal Spacing Unit.

API #		
Operator Name:	Property Name:	Well Number

KZ 06/29/2018