

District I  
1625 N. French Dr., Hobbs, NM 88240  
Phone: (505) 393-6161 Fax: (505) 393-0720  
District II  
811 S. First St., Artesia, NM 88210  
Phone: (505) 748-1283 Fax: (505) 748-9720  
District III  
1000 Rio Brazos Road, Aztec, NM 87410  
Phone: (505) 334-6178 Fax: (505) 334-6170  
District IV  
1220 S. St. Francis Dr., Santa Fe, NM 87505  
Phone: (505) 476-3460 Fax: (505) 476-3462

State of New Mexico  
Energy, Minerals & Natural Resources  
Department  
OIL CONSERVATION DIVISION  
1220 South St. Francis Dr.  
Santa Fe, NM 87505

BLM / R / S  
FORM C-102  
Revised August 1, 2011  
Submit one copy to appropriate  
District Office

☐ AMENDED REPORT

WELL LOCATION AND ACREAGE DEDICATION PLAT

<sup>1</sup> API Number 30-025- <b>46968</b>	<sup>2</sup> Pool Code 98094	<sup>3</sup> Pool Name Bobcat Draw; Upper Wolfcamp
<sup>4</sup> Property Code 39180	<sup>5</sup> Property Name VACA 24 FED COM	<sup>6</sup> Well Number 709H
<sup>7</sup> OGRID No. 7377	<sup>8</sup> Operator Name EOG RESOURCES, INC.	<sup>9</sup> Elevation 3331'

<sup>10</sup>Surface Location

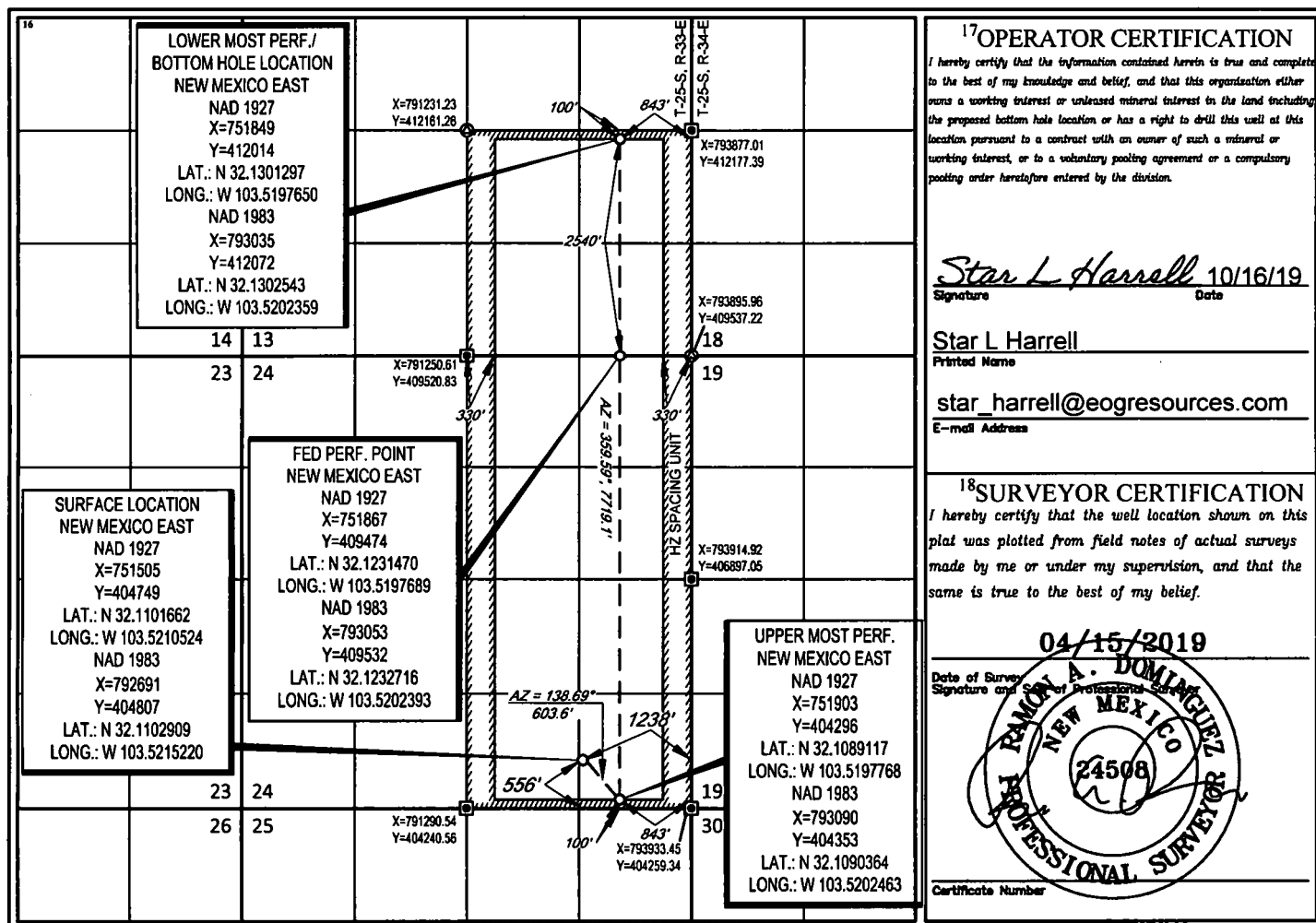
UL or lot no.	Section	Township	Range	Lot Idn	Feet from the	North/South line	Feet from the	East/West line	County
P	24	25-S	33-E	-	556'	SOUTH	1238'	EAST	LEA

<sup>11</sup>Bottom Hole Location If Different From Surface

UL or lot no.	Section	Township	Range	Lot Idn	Feet from the	North/South line	Feet from the	East/West line	County
I	13	25-S	33-E	-	2537'	SOUTH	843'	EAST	LEA

<sup>12</sup> Dedicated Acres 480.00	<sup>13</sup> Joint or Infill	<sup>14</sup> Consolidation Code	<sup>15</sup> Order No.
---	-------------------------------	----------------------------------	-------------------------

No allowable will be assigned to this completion until all interests have been consolidated or a non-standard unit has been approved by the division.



Intent ☒ As Drilled ☐

API # 30-025- <i>46968</i>			
Operator Name: EOG Resources, Inc.		Property Name: Vaca 24 Fed Com	Well Number 709H

Kick Off Point (KOP)

UL P	Section 24	Township 25S	Range 33E	Lot	Feet 556	From N/S S	Feet 1238	From E/W E	County Lea
Latitude N 32.1102909					Longitude W -103.5215220				NAD 83

First Take Point (FTP)

UL P	Section 24	Township 25S	Range 33E	Lot	Feet 100	From N/S S	Feet 843	From E/W E	County Lea
Latitude N 32.1090364					Longitude W -103.5202463				NAD 83

Last Take Point (LTP)

UL I	Section 13	Township 25S	Range 33E	Lot	Feet 2537	From N/S S	Feet 843	From E/W E	County Lea
Latitude N 32.1302543					Longitude W -103.5202359				NAD 83

Is this well the defining well for the Horizontal Spacing Unit? ☐ NO

Is this well an infill well? ☐ YES

If infill is yes please provide API if available, Operator Name and well number for Defining well for Horizontal Spacing Unit.

API # 30-025-			
Operator Name: EOG Resources, Inc.		Property Name: Vaca 24 Fed Com	Well Number 708H

KZ 06/29/2018