

State of New Mexico

Energy, Minerals and Natural Resources Department

DISTRICT I
1625 N. FRENCH DR., HOBBBS, NM 88240

DISTRICT II
1301 W. GRAND AVENUE, ARTESIA, NM 88210

DISTRICT III
1000 Rio Brazos Rd., Aztec, NM 87410

DISTRICT IV
1220 S. ST. FRANCIS DR., SANTA FE, NM 87505

OIL CONSERVATION DIVISION
1220 SOUTH ST. FRANCIS DR.
Santa Fe, New Mexico 87505

Form C-102
Revised JUNE 10, 2003
Submit to Appropriate District Office
State Lease - 4 Copies
Fee Lease - 3 Copies

WELL LOCATION AND ACREAGE DEDICATION PLAT

AMENDED REPORT

API Number 30-025-37724	Pool Code 22900	Pool Name Eunice; Blinebry - Tubb - Drinkard, North
Property Code 22503	Property Name NEDU	Well Number 630
OGRID No. 00873	Operator Name APACHE CORPORATION	Elevation 3401'

Surface Location

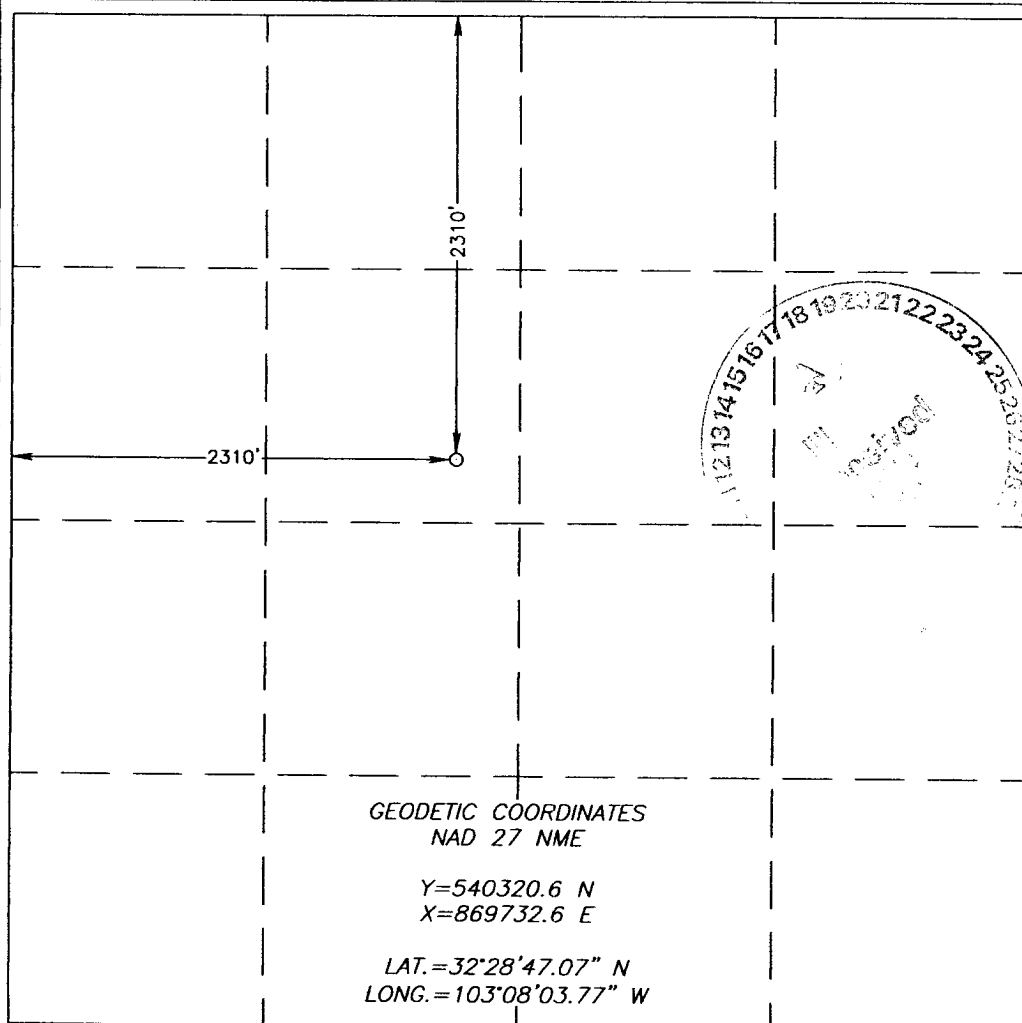
UL or lot No.	Section	Township	Range	Lot Idn	Feet from the	North/South line	Feet from the	East/West line	County
F	14	21-S	37-E		2310	NORTH	2310	WEST	LEA

Bottom Hole Location If Different From Surface

UL or lot No.	Section	Township	Range	Lot Idn	Feet from the	North/South line	Feet from the	East/West line	County

Dedicated Acres	Joint or Infill	Consolidation Code	Order No.
40			

NO ALLOWABLE WILL BE ASSIGNED TO THIS COMPLETION UNTIL ALL INTERESTS HAVE BEEN CONSOLIDATED OR A NON-STANDARD UNIT HAS BEEN APPROVED BY THE DIVISION



GEODETIC COORDINATES
NAD 27 NME

Y=540320.6 N
X=869732.6 E

LAT.=32°28'47.07" N
LONG.=103°08'03.77" W

OPERATOR CERTIFICATION

I hereby certify the the information contained herein is true and complete to the best of my knowledge and belief.

Elaine Linton
Signature

Elaine Linton
Printed Name

Engineering Technician
Title

July 14, 2006
Date

SURVEYOR CERTIFICATION

I hereby certify that the well location shown on this plat was plotted from field notes of actual surveys made by me or under my supervision and that the same is true and correct to the best of my belief.

DECEMBER 16, 2005

Date Surveyed JR

Signature & Seal of
Professional Surveyor

Ronald F. Eidson
05.11/1980

Certificate No. GARY EIDSON 12641
RONALD F. EIDSON 3239