

1625 N. French Dr., Hobbs, NM 88240  
 District II  
 811 South First, Artesia, NM 88210  
 District III  
 1000 Rio Brazos Road, Aztec, NM 87410  
 District IV  
 2040 South Pacheco, Santa Fe, NM 87505

STATE OF NEW MEXICO  
 Energy Minerals and Natural Resources

Form C-101  
 Revised March 17, 1999

Oil Conservation Division  
 2040 South Pacheco  
 Santa Fe, NM 87505

Submit to appropriate District Office  
 State Lease - 6 Copies  
 Fee Lease - 5 Copies

AMENDED REPORT

APPLICATION FOR PERMIT TO DRILL, RE-ENTER, DEEPEN, PLUGBACK, OR ADD A ZONE

<sup>1</sup> Operator Name and Address UNIT PETROLEUM COMPANY P.O. BOX 702500 TULSA, OKLAHOMA 74170		<sup>2</sup> OGRID Number 115970
		<sup>3</sup> API Number 30-025-36460
<sup>4</sup> Property Code 33010	<sup>5</sup> Property Name BYERS	<sup>6</sup> Well No. 1

<sup>7</sup> Surface Location

UL or lot no.	Section	Township	Range	Lot Idn	Feet from the	North/South line	Feet from the	East/West line	County
J	23	20S	35E		2100'	SOUTH	1600'	EAST	LEA

<sup>8</sup> Proposed Bottom Hole Location If Different From Surface

UL or lot no.	Section	Township	Range	Lot Idn	Feet from the	North/South line	Feet from the	East/West line	County

<sup>9</sup> Proposed Pool 1 OSUDO MORROW WEST (82240)	<sup>10</sup> Proposed Pool 2
---	-------------------------------

<sup>11</sup> Work Type Code N	<sup>12</sup> Well Type Code G	<sup>13</sup> Cable/Rotary ROTARY	<sup>14</sup> Lease Type Code P	<sup>15</sup> Ground Level Elevation 3670'
<sup>16</sup> Multiple NO	<sup>17</sup> Proposed Depth 13,500'	<sup>18</sup> Formation MORROW	<sup>19</sup> Contractor UNKNOWN	<sup>20</sup> Spud Date WHEN APPROVED

<sup>21</sup> Proposed Casing and Cement Program

Hole Size	Casing Size	Casing weight/foot	Setting Depth	Sacks of Cement	Estimated TOC
25"	20"	NA	40'	Redi-mix	SURFACE
17½"	13 3/8"	48	450'	450 Sx.	SURFACE
12¾"	9 5/8"	40 & 36	4300'	1100 Sx.	SURFACE
8 3/4"	7"	26	11,500'		
6 1/8"	4½"	13.5	11,200-13,500'		11,200'

<sup>22</sup> Describe the proposed program. If this application is to DEEPEN or PLUG BACK, give the data on the present productive zone and proposed new productive zone. Describe the blowout prevention program, if any. Use additional sheets if necessary.

SEE ATTACHED SHEET

May not produce until NSL is approved.



<sup>23</sup> I hereby certify that the information given above is true and complete to the best of my knowledge and belief.

Signature: *Joe T. Janica*  
 Printed name: Joe T. Janica  
 Title: Agent

OIL CONSERVATION DIVISION

Approved by: *Paul S. [Signature]*  
 Title: PETROLEUM ENGINEER  
 Approval Date: OCT 23 2003  
 Expiration Date:

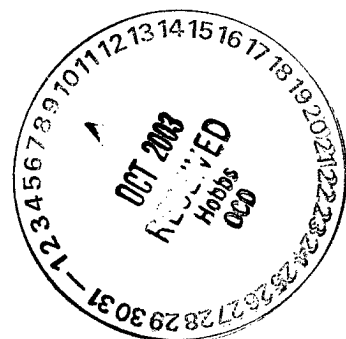
Date: 10/09/03  
 Phone: 505-391-8503

Conditions of Approval:

Attached

UNIT PETROLEUM COMPANY  
BYERS # 1  
UNIT "J" SECTION 23  
T20S-R35E LEA CO. NM

1. Drill 25" hole to 40'. Set 40' of 20" conductor pipe and cement to surface with Redi-mix.
2. Drill 17½" hole to 450'. Run and set 450' of 13 3/8" 48# H-40 ST&C casing. Cement with 450 Sx. of Class "C" cement + ¼# Flocele/Sx. + 2% CaCl, circulate cement to surface.
3. Drill 12¼" hole to 4300'. Run and set 4300' of 9 5/8" casing as follows: 1300' of 9 5/8" 40# N-80 LT&C, 2880' of 9 5/8" 36# J-55 ST&C, 120' of 9 5/8" 40# N-80 LT&C. Cement with 1100 Sx. of Class "C" cement + ¼# Flocele/Sx + other additives, circulate cement to surface.
4. Drill 8 3/4" hole to 11,500'. Run and set 11,500' of 7" 26# HCP-110 LT&C casing. Cement with 850 Sx. of Class "H" cement + additives, estimate top or cement 7000'.
5. Drill 6 1/8" hole to 13,500'. Run and set a 2300' 4½" 13.5# P-110 ST&C liner from 13,500' back to 11,200'. Cement with 275 Sx. of Class "H" Premium Plus cement + additives. Top of cement Liner top.



State of New Mexico

Energy, Minerals and Natural Resources Department

Form C-102

Revised February 10, 1994

Submit to Appropriate District Office

State Lease - 4 Copies

Fee Lease - 3 Copies

DISTRICT I

P.O. Box 1980, Hobbs, NM 88241-1980

DISTRICT II

P.O. Drawer DD, Artesia, NM 88211-0719

DISTRICT III

1000 Rio Brazos Rd., Artec, NM 87410

OIL CONSERVATION DIVISION

P.O. Box 2088

Santa Fe, New Mexico 87504-2088

DISTRICT IV

P.O. BOX 2088, SANTA FE, N.M. 87504-2088

WELL LOCATION AND ACREAGE DEDICATION PLAT

AMENDED REPORT

API Number 30-025-36460	Pool Code 82240	Pool Name OSUDO MORROW WEST
Property Code 33010	Property Name BYERS	Well Number 1
OGRID No. 115970	Operator Name UNIT PETROLEUM COMPANY	Elevation 3670'

Surface Location

UL or lot No.	Section	Township	Range	Lot Idn	Feet from the	North/South line	Feet from the	East/West line	County
J	23	20-S	35-E		2100'	SOUTH	1600'	EAST	LEA

Bottom Hole Location If Different From Surface

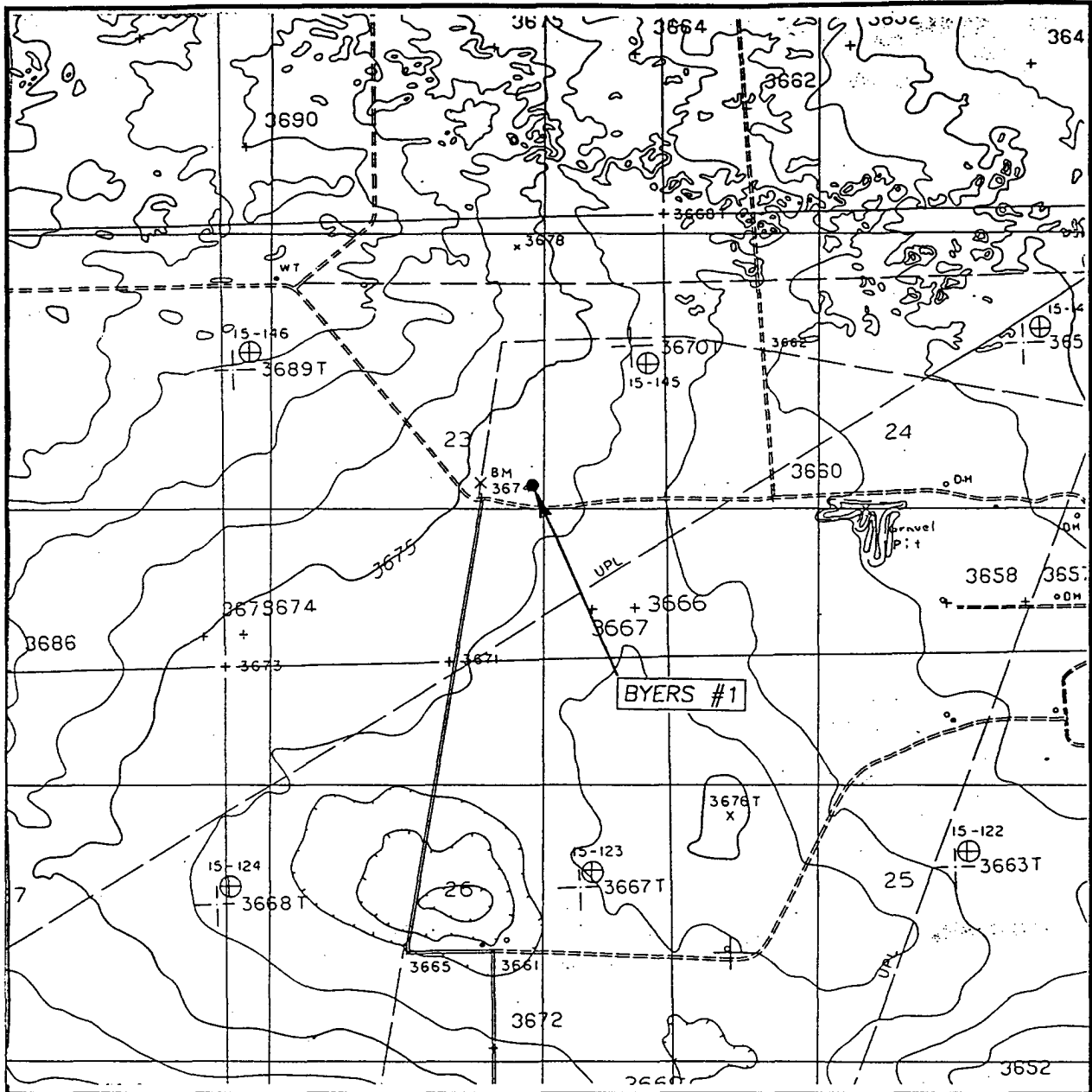
UL or lot No.	Section	Township	Range	Lot Idn	Feet from the	North/South line	Feet from the	East/West line	County

Dedicated Acres 320	Joint or Infill	Consolidation Code	Order No.
------------------------	-----------------	--------------------	-----------

NO ALLOWABLE WILL BE ASSIGNED TO THIS COMPLETION UNTIL ALL INTERESTS HAVE BEEN CONSOLIDATED OR A NON-STANDARD UNIT HAS BEEN APPROVED BY THE DIVISION

<p>GEOGRAPHIC COORDINATE</p> <p>NAD 27 NMEZ</p> <p>X = 567570.7 N</p> <p>Y = 780153.8 E</p> <p>LAT.= 32°33'25.45"N</p> <p>LONG.= 103°25'26.66"W</p>		<p><b>OPERATOR CERTIFICATION</b></p> <p>I hereby certify the the information contained herein is true and complete to the best of my knowledge and belief.</p> <p><i>Joe T. Janica</i></p> <p>Signature</p> <p>Joe T. Janica</p> <p>Printed Name</p> <p>Agent</p> <p>Title</p> <p>10/09/03 13 14 15 16 17 18</p> <p>Date</p>
		<p><b>SURVEYOR CERTIFICATION</b></p> <p>I hereby certify that the well location shown on this plat was plotted from field notes of actual surveys made by me or under my supervision, and that the same is true and correct to the best of my belief.</p> <p>June 27, 2003</p> <p>Date Surveyed</p> <p>Signature &amp; Seal of Professional Surveyor</p> <p><i>Ronald J. Edson</i></p> <p>03.11.0673</p> <p>Certificate No. RONALD J. EDSON 3239 GARY KIBSON 12641</p>

# LOCATION VERIFICATION MAP



SCALE: 1" = 2000'

CONTOUR INTERVAL: 5'  
MONUMENT SW, N.M.

SEC. 23 TWP. 20-S RGE. 35-E

SURVEY N.M.P.M.

COUNTY LEA

DESCRIPTION 2100' FSL & 1600' FEL

ELEVATION 3670'

OPERATOR UNIT PETROLEUM COMPANY

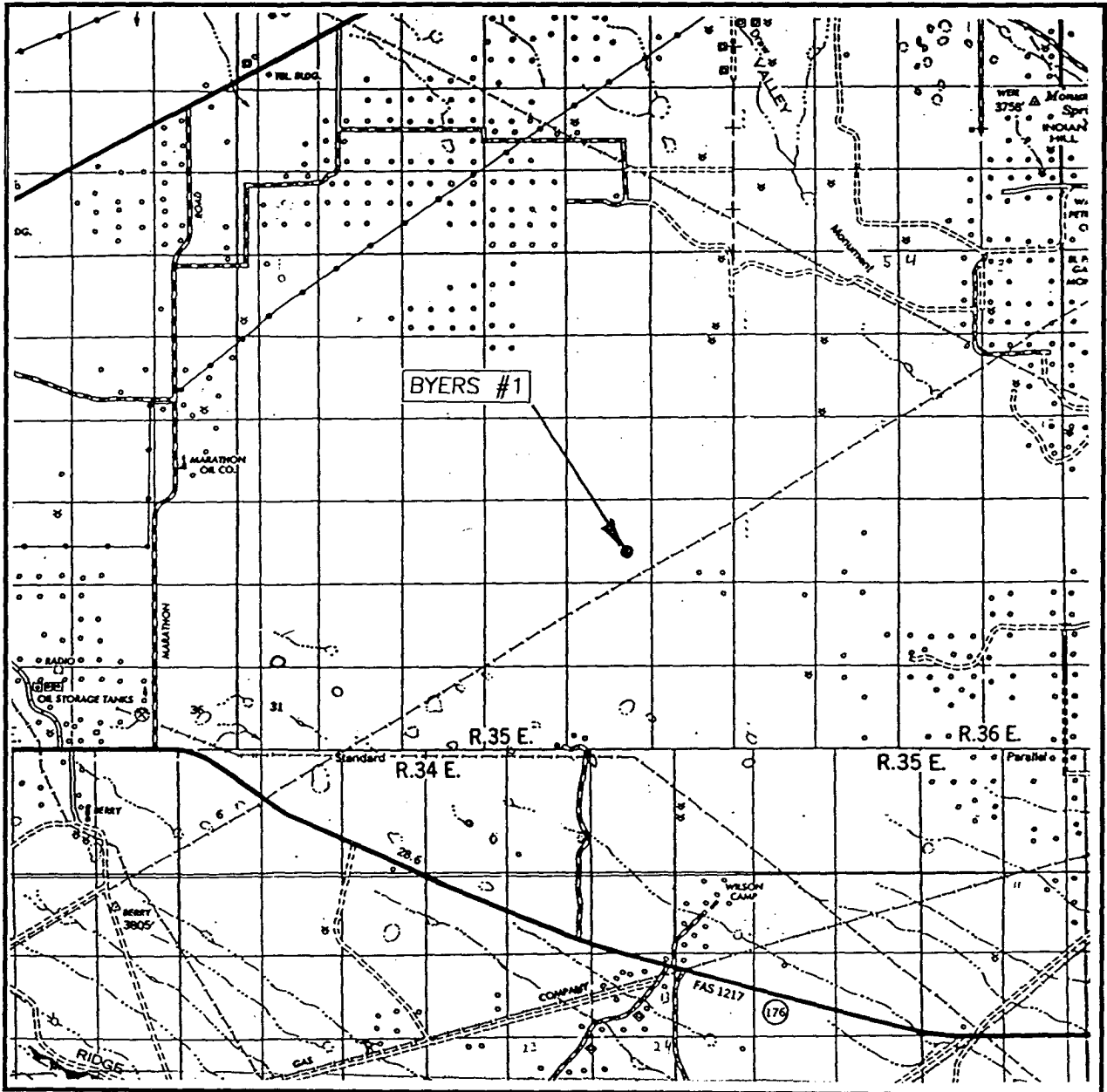
LEASE BYERS

U.S.G.S. TOPOGRAPHIC MAP  
MONUMENT SW, N.M.

JOHN WEST SURVEYING  
HOBBS, NEW MEXICO  
(505) 398-3117



# VICINITY MAP



SCALE: 1" = 2 MILES

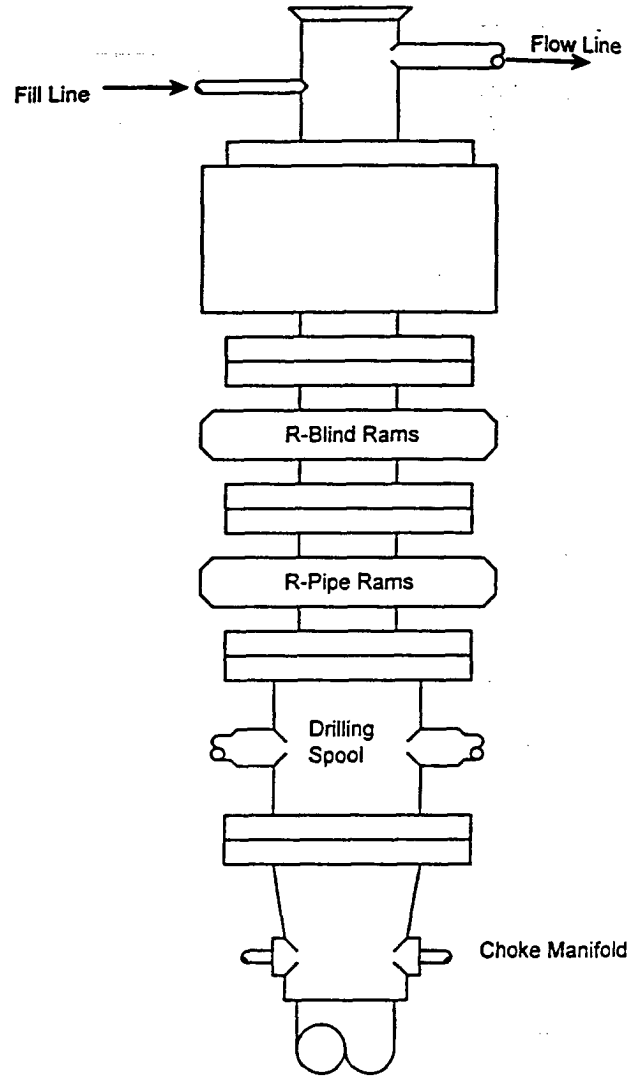
SEC. 23 TWP. 20-S RGE. 35-E  
 SURVEY \_\_\_\_\_ N.M.P.M.  
 COUNTY \_\_\_\_\_ LEA  
 DESCRIPTION 2100' FSL & 1600' FEL  
 ELEVATION \_\_\_\_\_ 3670'  
 OPERATOR UNIT PETROLEUM COMPANY  
 LEASE \_\_\_\_\_ BYERS

JOHN WEST SURVEYING  
 HOBBS, NEW MEXICO  
 (505) 393-3111



# BLOWOUT PREVENTER SYSTEM

5000 PSI



Type 1500 SERIES  
5000 psi WP

## Choke Manifold Assembly for 5M WP System

