

DISTRICT I  
1623 N. French Dr., Santa Fe, NM 87505

DISTRICT II  
1301 W. Grand Avenue, Artesia, NM 88210

DISTRICT III  
1000 Rio Bronco Dr., Santa Fe, NM 87410

DISTRICT IV  
1220 S. St. Francis Dr., Santa Fe, NM 87505

**RECEIVED**

State of New Mexico  
Energy, Minerals and Natural Resources Department

Form C-102  
Revised October 12, 2005

Submit to Appropriate District Office  
State Lease - 4 Copies  
Fee Lease - 3 Copies

OCT 14 2008

CONSERVATION DIVISION  
1220 South St. Francis Dr.  
Santa Fe, New Mexico 87505

**HOBBS (1)**

AMENDED REPORT

WELL LOCATION AND ACREAGE DEDICATION PLAT

API Number 30-05-28026	Pool Code 80285	Pool Name Little Lucky Lake; Morrow
Property Code 36249	Property Name KINAHAN "20" FEDERAL	Well Number 3
OGRID No. 162683	Operator Name CIMAREX ENERGY CO. OF COLORADO	Elevation 3966'

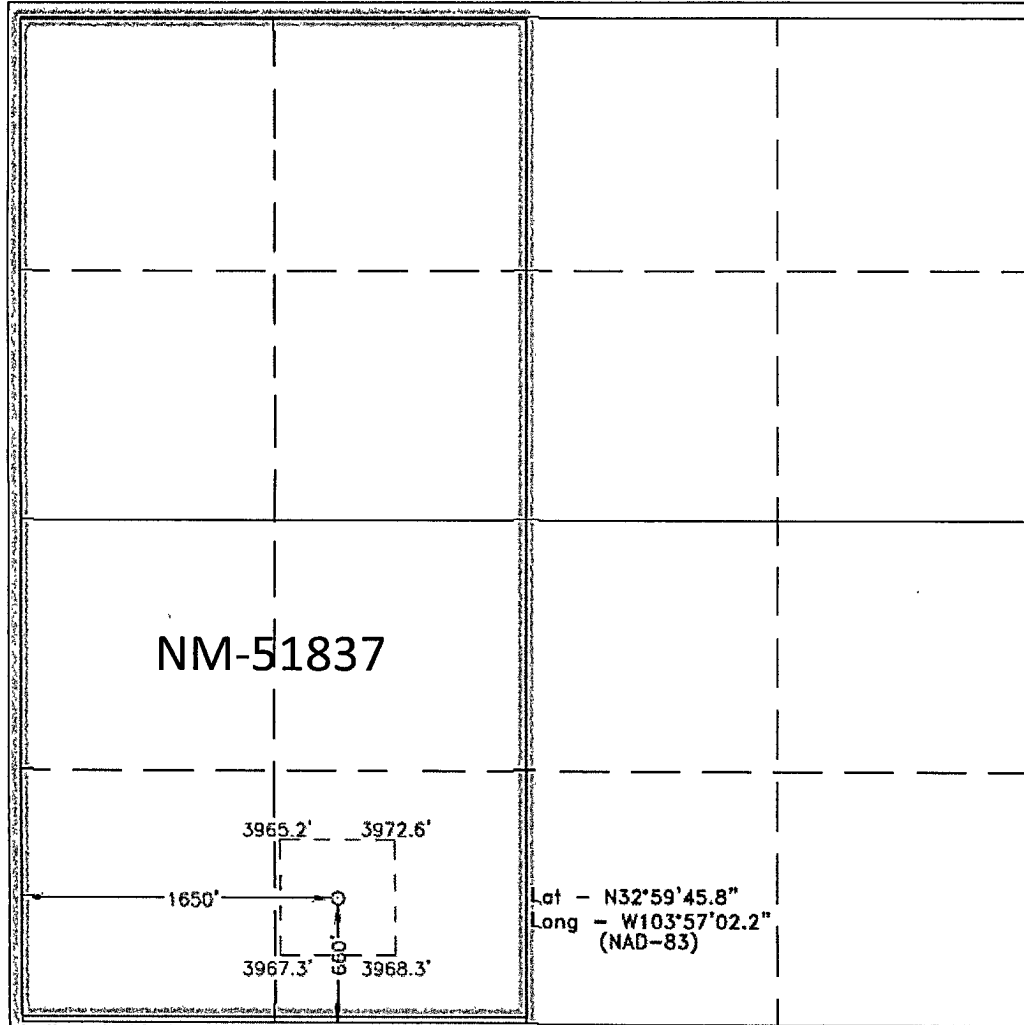
Surface Location

UL or lot No.	Section	Township	Range	Lot Idn	Feet from the	North/South line	Feet from the	East/West line	County
N	20	15 S	30 E		660	SOUTH	1650	WEST	CHAVES

Bottom Hole Location If Different From Surface

UL or lot No.	Section	Township	Range	Lot Idn	Feet from the	North/South line	Feet from the	East/West line	County
Dedicated Acres 320	Joint or infill	Consolidation Code	Order No.						

NO ALLOWABLE WILL BE ASSIGNED TO THIS COMPLETION UNTIL ALL INTERESTS HAVE BEEN CONSOLIDATED OR A NON-STANDARD UNIT HAS BEEN APPROVED BY THE DIVISION



**OPERATOR CERTIFICATION**

I hereby certify that the information contained herein is true and complete to the best of my knowledge and belief, and that this organization either owns a working interest or unleased mineral interest in the land including the proposed bottom hole location pursuant to a contract with an owner of such a mineral or working interest, or to a voluntary pooling agreement or a compulsory pooling order heretofore entered by the division.

Signature: Scott Haynes Date: 10-6-08

Printed Name: Scott Haynes

---

**SURVEYOR CERTIFICATION**

I hereby certify that the well location shown on this plat was plotted from field notes of actual surveys made by me or under my supervision, and that the same is true and correct to the best of my belief.

OCTOBER 16, 2006

Date Surveyed: 10-16-06  
Signature: [Signature]  
Professional Seal: [Seal]

Certificate No. 7977 Gary L. Jones

**BASIN SURVEYS**