

RECEIVED

NOV 12 2009
HOBBSON OIL

State of New Mexico
Energy, Minerals and Natural Resources Department

Form C-102
Revised October 12, 2005
Submit to Appropriate District Office
State Lease - 4 Copies
Fee Lease - 3 Copies

DISTRICT I
1625 N FRENCH DR HOHRS NM 86240

DISTRICT II
1301 W GRAND AVENUE, ARTESIA, NM 86210

DISTRICT III
1000 Rio Brazos Rd., Aztec, NM 87410

OIL CONSERVATION DIVISION
1330 SOUTH ST. FRANCIS DR.
Santa Fe, New Mexico 87505

DISTRICT IV
1330 S ST FRANCIS DR., SANTA FE, NM 87505

WELL LOCATION AND ACREAGE DEDICATION PLAT

AMENDED REPORT

API Number 30-05-29066	Pool Code 97769	Pool Name Wildcat (Narrow) <i>Altoha</i>
Property Code 37469	Property Name POLECAT STATE	
OGRID No. 231429	Operator Name MANZANO, LLC	Well Number 1
		Elevation 4378'

Surface Location

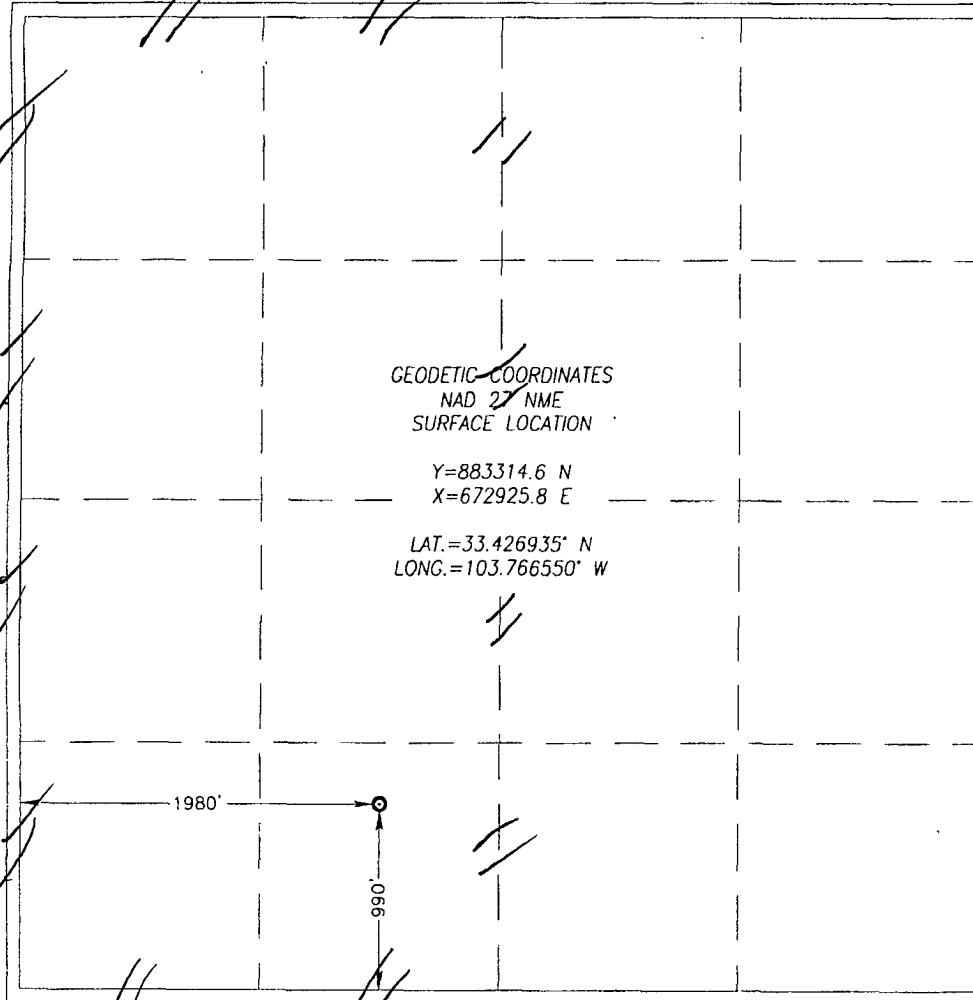
UL or lot No.	Section	Township	Range	Lot Idn	Feet from the	North/South line	Feet from the	East/West line	County
N	22	10-S	31-E		990	SOUTH	1980	WEST	CHAVES

Bottom Hole Location If Different From Surface

UL or lot No.	Section	Township	Range	Lot Idn	Feet from the	North/South line	Feet from the	East/West line	County

Dedicated Acres 320.00	Joint or Infill	Consolidation Code N/A	Order No
---------------------------	-----------------	---------------------------	----------

NO ALLOWABLE WILL BE ASSIGNED TO THIS COMPLETION UNTIL ALL INTERESTS HAVE BEEN CONSOLIDATED OR A NON-STANDARD UNIT HAS BEEN APPROVED BY THE DIVISION



OPERATOR CERTIFICATION

I hereby certify that the information herein is true and complete to the best of my knowledge and belief, and that this organization either owns a working interest or unleased mineral interest in the land including the proposed bottom hole location or has a right to drill this well at this location pursuant to a contract with an owner of such mineral or working interest, or to a voluntary pooling agreement or a compulsory pooling order heretofore entered by the division.

[Signature]
Date 11/10/09
Signature
Date
Printed Name
Kyle Alpers

SURVEYOR CERTIFICATION

I hereby certify that the well location shown on this plat was plotted from field notes of actual surveys made by me or under my supervision, and that the same is true and correct to the best of my belief.

OCTOBER 24 2008

Date Surveyed
Signature
Professional Seal of
Professional Surveyor
NEW MEXICO
REGISTERED PROFESSIONAL SURVEYOR
12289
06.11.1849
10/18/08

Certification No. GARY G. EIDSON 12641
RONALD J. EIDSON 3239

em