

DISTRICT I
P.O. Box 1980, Hobbs, NM 88241-1980

DISTRICT II
P.O. Drawer DD, Artesia, NM 88211-0710

DISTRICT III
1000 Rio Brazos Rd., Aztec, NM 87410

DISTRICT IV
P.O. Box 2088, Santa Fe, N.M. 87504-2088

State of New Mexico
Energy, Minerals and Natural Resources Department
OIL CONSERVATION DIVISION
P.O. Box 2088
Santa Fe, New Mexico 87504-2088

Form C-102
Revised February 10, 1994
Submit to Appropriate District Office
State Lease - 4 Copies
Fee Lease - 3 Copies

WELL LOCATION AND ACREAGE DEDICATION PLAT

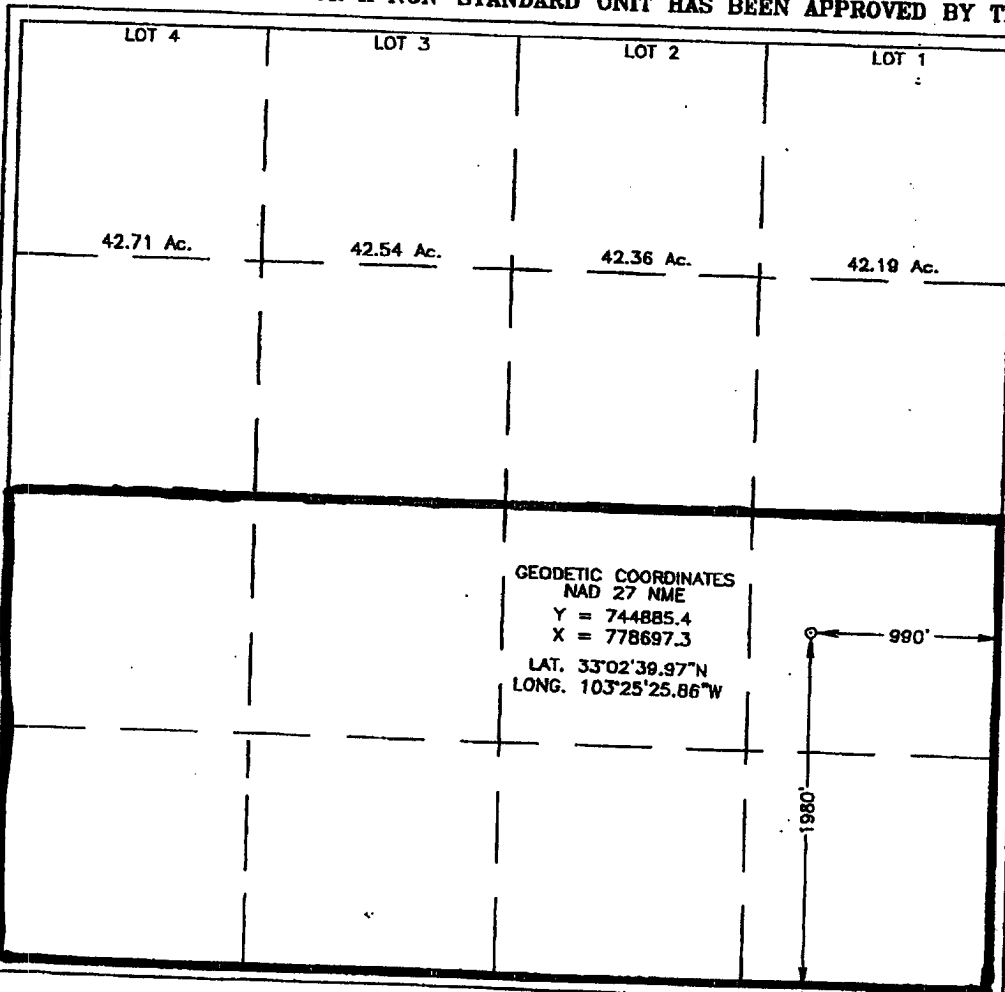
AMENDED REPORT

API Number 30-025-36139	Pool Code 96593	Pool Name MORTON MISSISSIPPIAN
Property Code 31901	Property Name RUSSELL STATE	
OGRID No. 147179	Operator Name CHESAPEAKE OPERATING, INC.	
		Well Number 1
		Elevation 4024'

UL or lot No.	Section	Township	Range	Lot Idn	Feet from the	North/South line	Feet from the	East/West line	County
1	5	15-S	35-E		1980	SOUTH	990	EAST	LEA

UL or lot No.	Section	Township	Range	Lot Idn	Feet from the	North/South line	Feet from the	East/West line	County
Bottom Hole Location If Different From Surface									
Dedicated Acres: 320									
Joint or Infill: 									
Consolidation Code: 									
Order No.: 									

NO ALLOWABLE WILL BE ASSIGNED TO THIS COMPLETION UNTIL ALL INTERESTS HAVE BEEN CONSOLIDATED OR A NON-STANDARD UNIT HAS BEEN APPROVED BY THE DIVISION



OPERATOR CERTIFICATION

I hereby certify the the information contained herein is true and complete to the best of my knowledge and belief.

Barbara J. Bale
Signature

Barbara J. Bale
Printed Name

Regulatory Analyst
Title

01/27/03
Date

SURVEYOR CERTIFICATION

I hereby certify that the well location shown on this plat was plotted from field notes of actual surveys made by me or under my supervision and that the same is true and correct to the best of my belief.

JANUARY 20, 2003
Date Surveyed

Ronald S. Edson
Signature & Seal
Professional Surveyor

03.11.007
Certificate No.

RONALD S. EDSON 3239
GATE #1000 12041