

HOBBS OCD

MAY 19 2011

DISTRICT I
1625 N. French Dr., Hobbs, NM 88240
DISTRICT II
1301 W. Grand Avenue, Artesia, NM 88210
DISTRICT III
1000 Rio Brazos Rd., Aztec, NM 87410
DISTRICT IV
1220 S. St. Francis Dr., Santa Fe, NM 87505

State of New Mexico
Energy, Minerals and Natural Resources Department

Form C-102
Revised July 16, 2010

Submit one copy to appropriate
District Office

RECEIVED
OIL

CONSERVATION DIVISION
1220 South St. Francis Dr.
Santa Fe, New Mexico 87505

WELL LOCATION AND ACREAGE DEDICATION PLAT

AMENDED REPORT

API Number 30-025-39941	Pool Code 05535	Pool Name Berry; Bone Spring, North
Property Code 38342	Property Name BLACKBERRY "BKB" STATE	Well Number 1H
OGRID No. 025575	Operator Name YATES PETROLEUM CORP.	Elevation 3727'

Surface Location

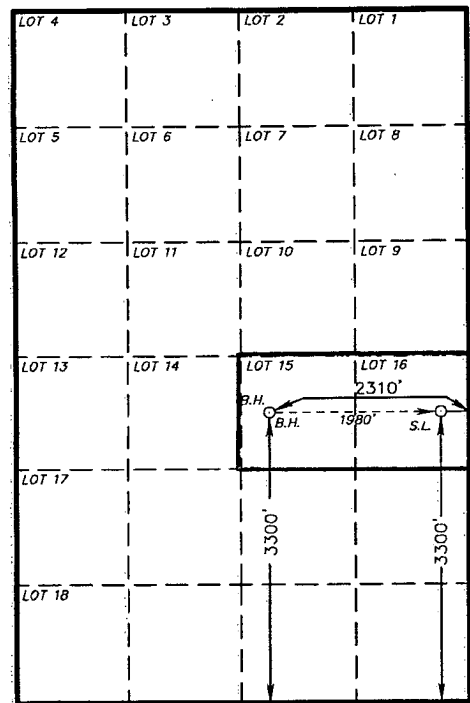
UL or lot No.	Section	Township	Range	Lot Idn	Feet from the	North/South line	Feet from the	East/West line	County
LOT 16	6	21 S	34 E		3300	SOUTH	330	EAST	LEA

Bottom Hole Location If Different From Surface

UL or lot No.	Section	Township	Range	Lot Idn	Feet from the	North/South line	Feet from the	East/West line	County
LOT 15	6	21 S	34 E		3340	SOUTH	4893	EAST	LEA

Dedicated Acres 80	Joint or Infill	Consolidation Code	Order No.
-----------------------	-----------------	--------------------	-----------

NO ALLOWABLE WILL BE ASSIGNED TO THIS COMPLETION UNTIL ALL INTERESTS HAVE BEEN CONSOLIDATED
OR A NON-STANDARD UNIT HAS BEEN APPROVED BY THE DIVISION



PROPOSED BOTTOM HOLE LOCATION
 Lat - N 32°30'34.81"
 Long - W 103°30'29.19"
 NMSPC- N 550132.234
 E 795726.282
 (NAD-83)

SURFACE LOCATION
 Lat - N 32°30'34.84"
 Long - W 103°30'06.07"
 NMSPC- N 550151.829
 E 797705.853
 (NAD-83)

OPERATOR CERTIFICATION
 I hereby certify that the information contained herein is true and complete to the best of my knowledge and belief, and that this organization either owns a working interest or unleased mineral interest in the land including the proposed bottom hole location or has a right to drill this well at this location pursuant to a contract with an owner of such a mineral or working interest, or to a voluntary pooling agreement or a compulsory pooling order heretofore entered by the division.
 Signature: *Tina Huerta* Date: May 17, 2011

Printed Name: Tina Huerta
 Email Address: tinah@yatespetroleum.com

SURVEYOR CERTIFICATION
 I hereby certify that the well location shown on this plat was plotted from field notes of actual surveys made by me or under my supervision, and that the same is true and correct to the best of my belief.

Date Surveyed: SEP 11 2010
 Signature & Seal of Professional Surveyor: *Gary L. Jones*
 Certificate No. Gary L. Jones 7977

BASIN SURVEYS 23428

MAY 19 2011

KD