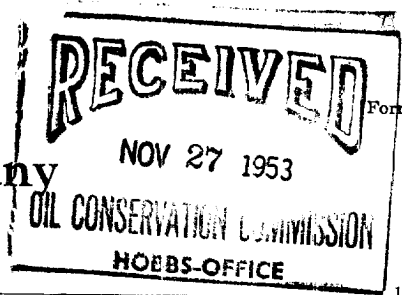


Mescalero Field
Magnolia Petroleum Company

PRODUCING DEPARTMENT



Form X-1313

19 53

Location made

Nov. 6 th,

New Mex. "B"

Well No. 3

Lea

District

Lease NM-1182, acres 160

Sec. 27, T12S, R32E

District Township

Lea

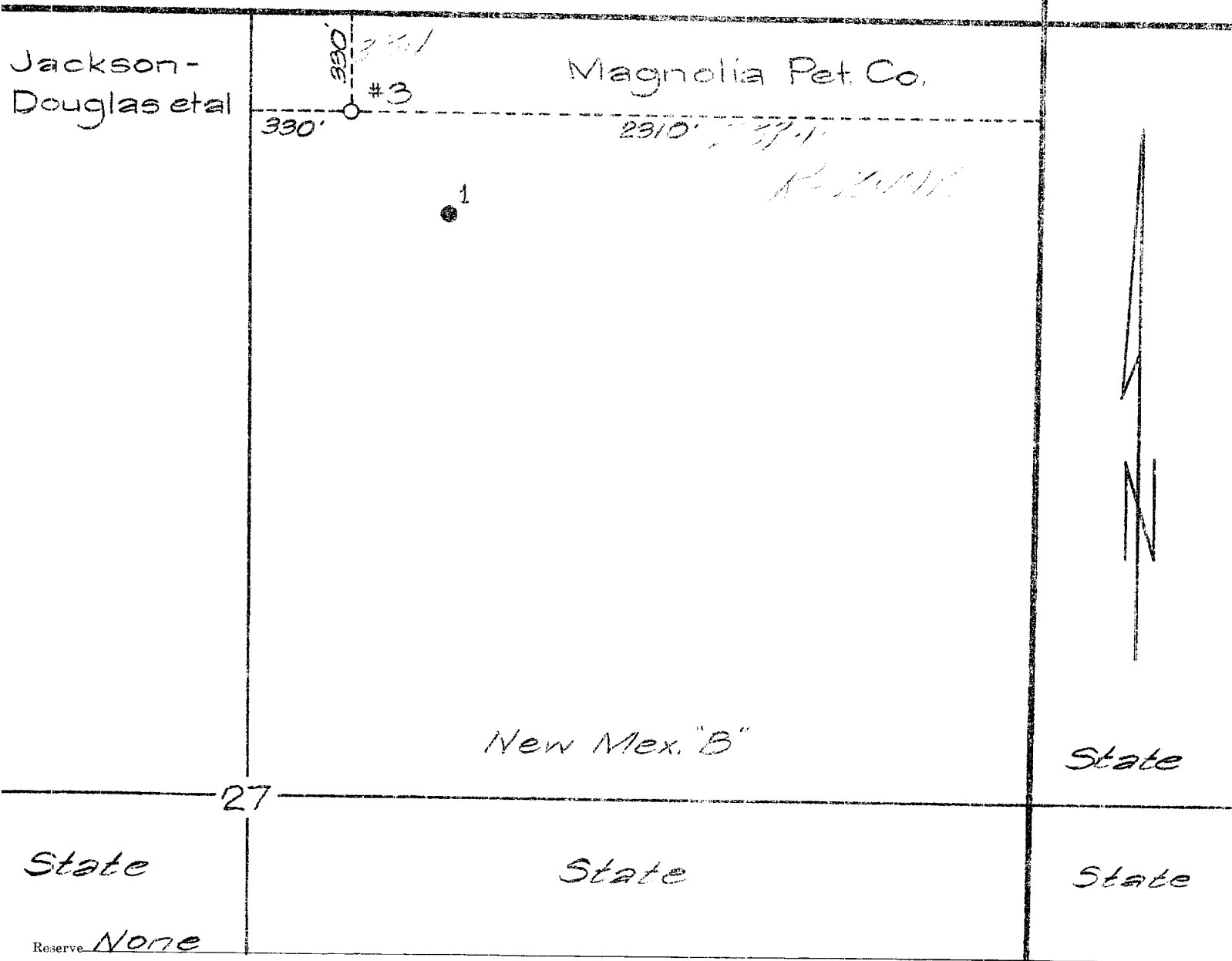
County, New Mexico

Scale 1" = 500'

N S E W

Cities Service

State



27

State

State

State

Reserve None

Special instructions Permit depth - 9400 ft.

Location changed on account of

Date work is commenced

19

Supt.

Location approved by

Plat made by

K. C. Lawless

Magnolia Petroleum Company
PRODUCING DEPARTMENT

Location for Well No. _____

File No. _____