

NO. OF COPIES RECEIVED
DISTRIBUTION
SANTA FE
FILE
U.S.G.S.
LAND OFFICE
OPERATOR

NEW MEXICO OIL CONSERVATION COMMISSION

Form O-101
Revised 1-1-75

1. Indicate Type of Lease
STATE FEE

2. Oil & Gas Lease No.

APPLICATION FOR PERMIT TO DRILL DEEPEN OR PLUG BACK

1a. Type of Work b. Type of Well DRILL <input type="checkbox"/> DEEPEN <input type="checkbox"/> PLUG BACK <input checked="" type="checkbox"/> OIL WELL <input type="checkbox"/> GAS WELL <input type="checkbox"/>		7. Unit Agreement Name
2. Name of Operator Texaco Inc.		8. Firm or Lease Name John H. Moore
3. Address of Operator P. O. Box 3109 Midland, Texas 79702		9. Well No. 1
4. Location of Well UNIT LETTER D LOCATED 660 FEET FROM THE North AND 660 FEET FROM THE West LINE OF SECTION 25 T11-S 32E		10. Well and Pool, or Wildcat Moore Permo Penn
		11. County Lea
		12. Rotary or C.T.P. 8500 PB Permo Penn Rotary
14. Elevations (Show whether H.T., R.T., etc.) 4327 Gr	15. Date of Completion ---	16. Approx. Date Work will start Immediately

PROPOSED CASING AND CEMENT PROGRAM

SIZE OF HOLE	SIZE OF CASING	WEIGHT PER FOOT	SETTING DEPTH	SACKS OF CEMENT	EST. TOP
17 1/2 "	13 3/8"	48#, H-40	303	350	Circulated
11 "	9 5/8"	36#, J-55	3510	2300	Circulated
7 3/4"	5 1/2 "	17#, N-80 20#, J-55	10451	531	Circulated

Refer to attachment for workover Program.

Well presently completed in the Moore Devonian Pool which will be abandoned during this workover.

Well number John H. Moore # 3 is also in Unit letter D, and also in the Moore Permo Penn pool, but well is "T.A. approved 10/75" by the NMDCC.

IN ABOVE SPACE DESCRIBE PROPOSED WORKOVER PROGRAM, INCLUDING BUT NOT LIMITED TO: TYPE OF WORK, SIZE OF CASING, WEIGHT PER FOOT, SETTING DEPTH, SACKS OF CEMENT, EST. TOP

I hereby certify that the information furnished is true and correct.

Robert S. Cornelius
Robert S. Cornelius

Asst. Petr. Engr. Manager

June 22, 1983

ORIGINAL SIGNED BY JERRY SEXTON

APPROVED BY: DISTRICT SUPERVISOR

CONDITIONS OF APPROVAL, IF ANY:

DATE

John H. Moore Lea County, New Mexico

1. Move in, rig up. Install BOP. Set CIBP @ 8520' with wireline & spot 20' cmt. on top.
2. Perforate the following intervals with 2 JSPF: 8370,72,75,78,80,88,8408,13,25,27,29,32,40,52,78,80,86,8500,02 (19 int,38 holes).
3. TIH w/workstring and 5 1/2 RTTS packer. Set packer at 8300'. Load back side to 500 PSI.
4. Acidize perforations 8375'-8502' with 2000 gallons 15% NE acid dropping 2 ball sealers (1.1 sp. gr.) after every two barrels of acid. (Max. pressure 5000 PSI. shut in 30 minutes.)
5. Swab test well to evaluate productive potential. If productive the proceed with step 6.
6. Set packer @ 8300'.
7. Load and pressure annulus to 500 PSI w/2% KCI water.
8. Acidize as follows w/10,000 gals 28% XL-Acid/6:
 - a) Pump 3300 gals 28% XL-Acid/6 (Max. press. 4500 PSI, rate 5BPM)
 - b) Pump 500 gals. gelled brine dropping 500 lbs. rock salt
 - c) Repeat a-b.
 - d) Pump 3400 gals. 28% XL-Acid/6.
9. Flush w/1700 gals 2% KCI.
10. S.I. 2 hours then swab back load.

RECEIVED

JUN 21 1968

O.C.D.
FOSSS OFFICE

MEXICO OIL CONSERVATION COMMISSION
WELL LOCATION AND ACREAGE DEDICATION PLAT

Form C-102
Supersedes C-128
Effective 1-1-65

All distances must be from the outer boundaries of the Section.

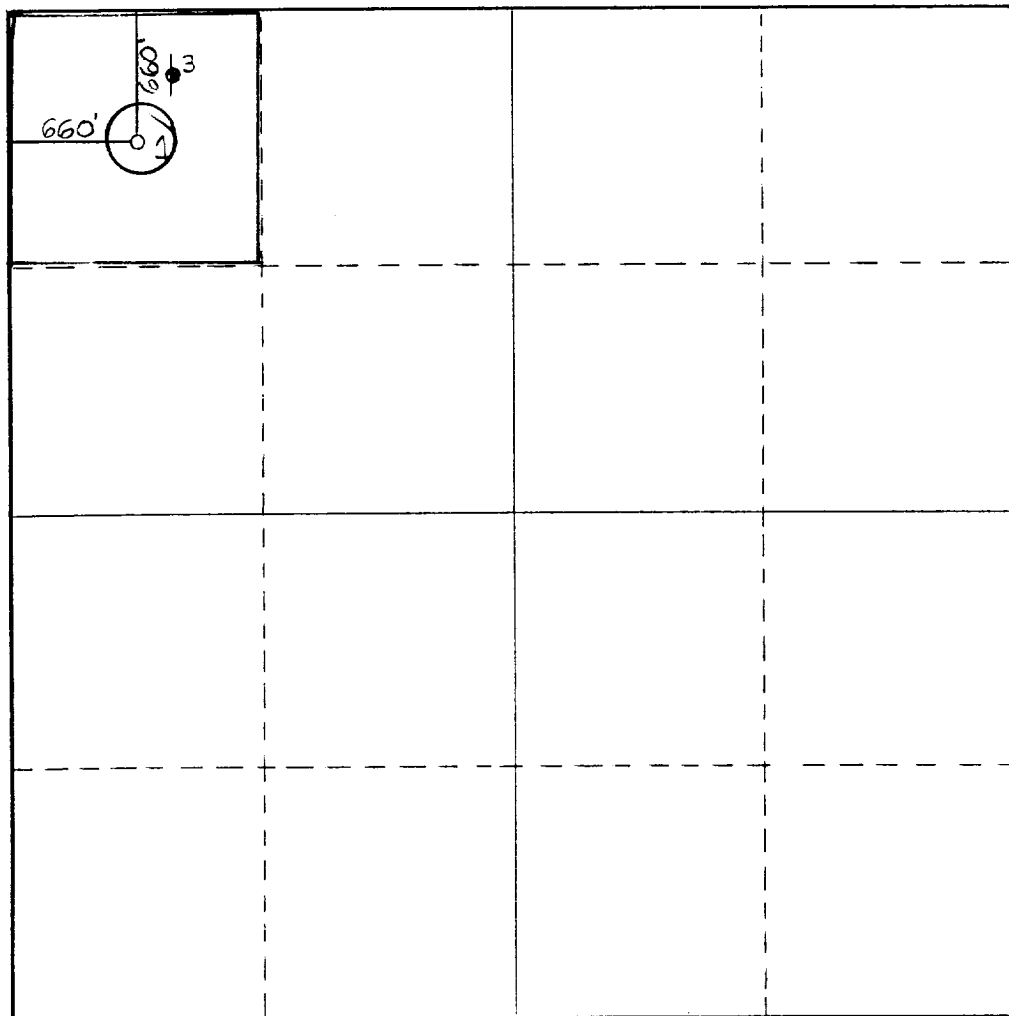
Operator Texaco Inc.		Lease John H. Moore			Well No. 1
Unit Letter D	Section 25	Township 11-S	Range 32E	County Lea	
Actual Footage Location of Well: 660 feet from the North line and 660 feet from the West line					
Ground Level Elev. 4327	Producing Formation Permo Penn		Pool Moore Permo Penn		Dedicated Acreage: 40 Acres

1. Outline the acreage dedicated to the subject well by colored pencil or hachure marks on the plat below.
2. If more than one lease is dedicated to the well, outline each and identify the ownership thereof (both as to working interest and royalty).
3. If more than one lease of different ownership is dedicated to the well, have the interests of all owners been consolidated by communitization, unitization, force-pooling, etc?

Yes No If answer is "yes," type of consolidation _____

If answer is "no," list the owners and tract descriptions which have actually been consolidated. (Use reverse side of this form if necessary.) _____

No allowable will be assigned to the well until all interests have been consolidated (by communitization, unitization, forced-pooling, or otherwise) or until a non-standard unit, eliminating such interests, has been approved by the Commission.



CERTIFICATION

I hereby certify that the information contained herein is true and complete to the best of my knowledge and belief.

Bethel L. Eiland

Name

Bethel L. Eiland

Position

Division Surveyor

Company

Texaco Inc.

Date

June 22, 1983

I hereby certify that the well location shown on this plat was plotted from field notes of actual surveys made by me or under my supervision, and that the same is true and correct to the best of my knowledge and belief.

Date Surveyed

June 22, 1983

Registered Professional Engineer and Land Surveyor

MEXICO
Bethel L. Eiland

Certificate No.

4386 BETHEL L. EILAND

