

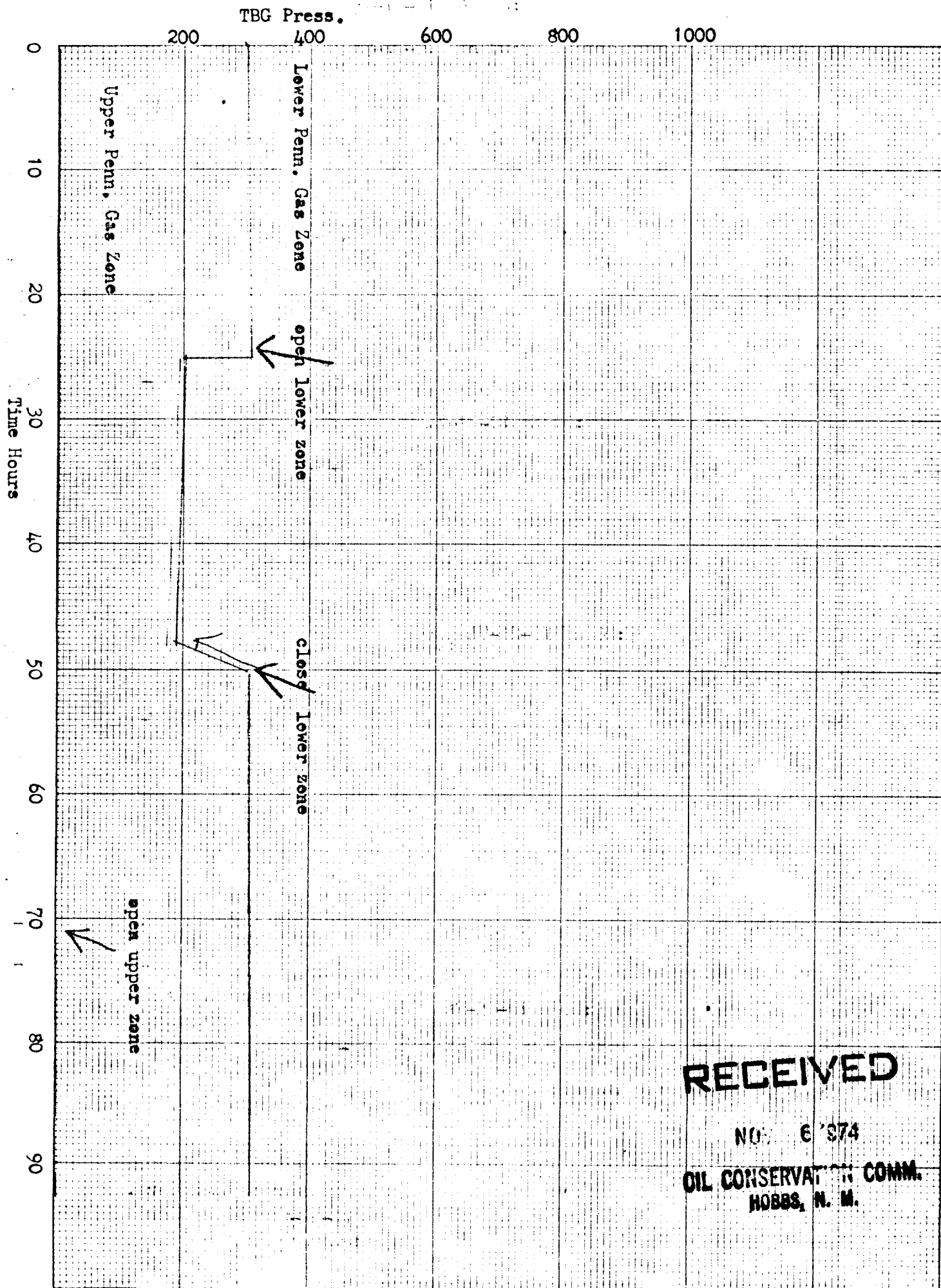
1. A packer leakage test shall be conducted on a multiply completed well within seven days after a failure of the well to produce. Thereafter, as recommended by the operator, the well shall be shut-in. Such tests shall also be conducted on all wells which are shut-in for more than 30 days following recompletion and on wells which are shut-in for more than 30 days following work has been done on a well in which the packer or tubing have been disturbed. Tests shall also be taken at any time that communication is suspected or when requested by the Commission.
2. At least 72 hours prior to the commencement of any packer leakage test, the operator shall notify the Commission in writing of the exact time the test is to be commenced. Offset operators shall also be so notified.
3. The packer leakage test shall commence when both zones of the dual completion are shut-in for pressure stabilization. Both zones shall remain shut-in until the well-head pressure in each has stabilized and for a minimum of two hours thereafter, provided however, that they need not remain shut-in more than 24 hours.
4. For Flow Test No. 1, one zone of the dual completion shall be produced at the normal rate of production while the other zone remains shut-in. Such test shall be continued until the flowing wellhead pressure has become stabilized and for a minimum of two hours thereafter, provided however, that the flow test need not continue for more than 24 hours.

5. Following completion of Flow Test No. 1, the well shall again be shut-in, in accordance with paragraph 3 above.

6. Flow Test No. 2 shall be conducted even though no leak was indicated in Flow Test No. 1. Procedure for Flow Test No. 2 is to be the same as for Flow Test No. 1 except that the previously produced zone shall remain shut-in while the previously shut-in zone is produced.

7. All pressures, throughout the entire test, shall be continuously measured and recorded with recording pressure gauges, the accuracy of which must be checked with a deadweight tester at least twice, once at the beginning and once at the end, of each flow test.

8. The results of the above-described tests shall be filed in triplicate within 15 days after completion of the test. Tests shall be filed with the appropriate District Office of the New Mexico Oil Conservation Commission on Southeast New Mexico Packer Leakage Test Form Revised 11-1-58, together with the original pressure recording gauge charts with all the deadweight pressures which were taken indicated thereon. In lieu of filing the aforesaid charts, the operator may construct a pressure versus time curve for each zone of each test, indicating thereon all pressure changes which may be reflected by the gauge charts as well as all deadweight pressure readings which were taken. If the pressure curve is submitted, the original chart must be permanently filed in the operator's office. Form C-116 shall also accompany the Packer Leakage Test Form when the test period coincides with a gas-oil ratio test period.



NEW MEXICO OIL CONSERVATION COMMISSION

SOUTHEAST NEW MEXICO PACKER LEAKAGE TEST

Operator Amerada Hess Corp.			Lease J.T. Caudle Gas Com.			Well No. 2	
Location of Well	Unit D	Sec 3	Twp 12-S	Rge 33-E	County Lea		
	Name of Reservoir or Pool		Type of Prod (Oil or Gas)	Method of Prod Flow, Art Lift	Prod. Medium (Tbg or Csg)	Choke Size	
Upper Compl	Bagley Upper Penn. Gas		Gas	TA	TBG	20-64	
Lower Compl	Bagley Lower Penn. Gas		Gas	Flow	TBG	3-4	

FLOW TEST NO. 1

Both zones shut-in at (hour, date): 9:00 AM 10-21-74

Well opened at (hour, date):	9:00 AM 10-22-74	Upper Completion	Lower Completion
Indicate by (X) the zone producing.....			+
Pressure at beginning of test.....		0	320
Stabilized? (Yes or No).....		+	No
Maximum pressure during test.....		0	200
Minimum pressure during test.....		0	160
Pressure at conclusion of test.....		0	180
Pressure change during test (Maximum minus Minimum).....		-	40
Was pressure change an increase or a decrease?.....		-	Decrease
Well closed at (hour, date):	9:00 AM 10-23-74	Total Time On Production	24 Hours
Oil Production		Gas Production	
During Test: 0 bbls; Grav.		During Test 484	MCF; GOR

Remarks

FLOW TEST NO. 2

Well opened at (hour, date):	9:00 AM 10-24-74	Upper Completion	Lower Completion
Indicate by (X) the zone producing.....		+	
Pressure at beginning of test.....		0	330
Stabilized? (Yes or No).....		Yes	Yes
Maximum pressure during test.....		0	330
Minimum pressure during test.....		0	330
Pressure at conclusion of test.....		0	330
Pressure change during test (Maximum minus Minimum).....		-	-
Was pressure change an increase or a decrease?.....		-	-
Well closed at (hour, date)	9:00AM 10-25-74	Total time on Production	24 Hours
Oil Production		Gas Production	
During Test: 0 bbls; Grav.		During Test	MCF; GOR

Remarks This zone temporary abanded

I hereby certify that the information herein contained is true and complete to the best of my knowledge.

Approved 19
New Mexico Oil Conservation Commission

Operator Amerada Hess Corp.

By 10-28-74

By
Title
Orig. Signed By
Joe D. Ramey
Dist. 1. Sumo

Title Field Supervisor
10-28-74