

**NEW MEXICO OIL CONSERVATION COMMISSION
WELL LOCATION AND ACREAGE DEDICATION PLAT**

Form C-102
Supersedes C-128
Effective 1-1-65

All distances must be from the outer boundaries of the Section.

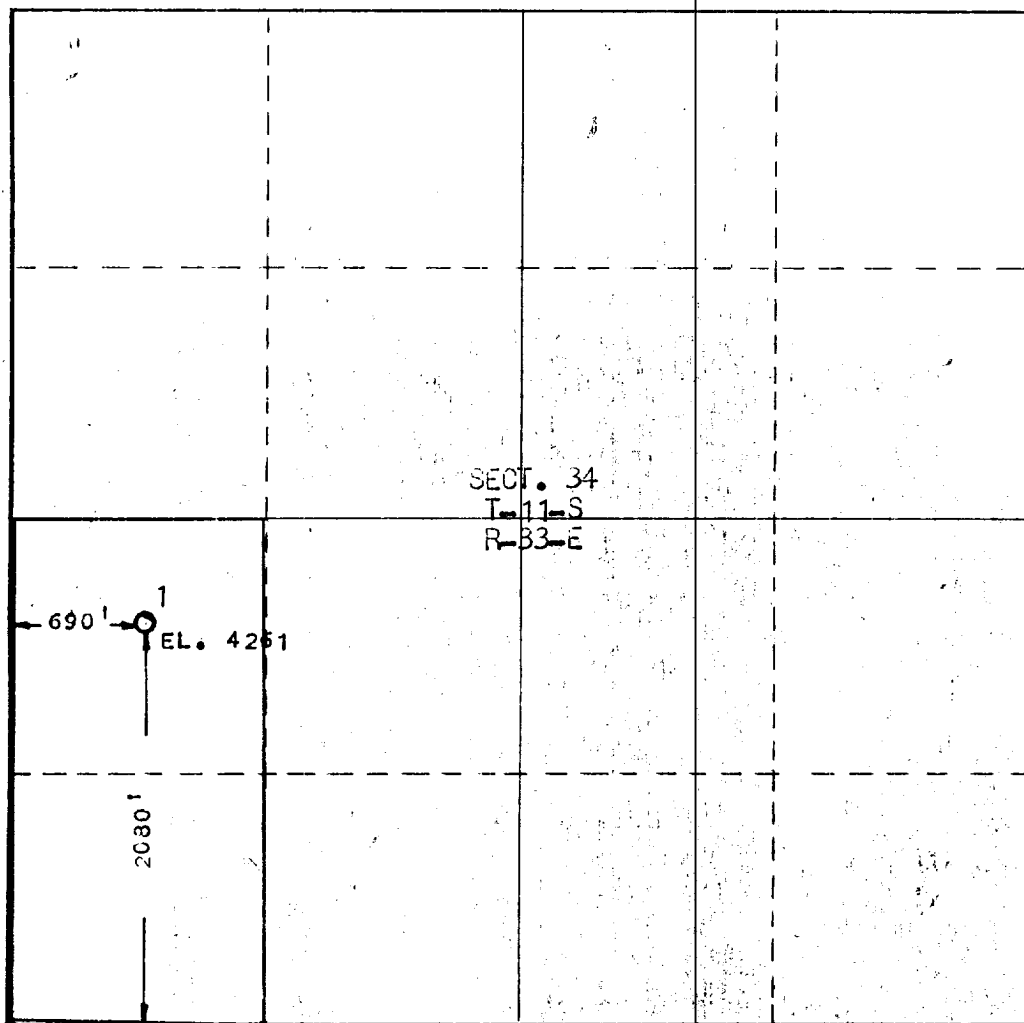
Operator Anderson Oil & Gas Company, Inc.			Lease Hess State		Well No. 1
Unit Letter L	Section 34	Township 11-S	Range 33-E	County Lea	
Actual Wellbore Location of Well:					
690 feet from the West line and		2080 feet from the South line			
Ground Level Elev. 4261	Producing Formation Penn.	Pool Bagley Penn., No.	Dedicated Acreage: 80 Acres		

1. Outline the acreage dedicated to the subject well by colored pencil or hachure marks on the plat below.
2. If more than one lease is dedicated to the well, outline each and identify the ownership thereof (both as to working interest and royalty).
3. If more than one lease of different ownership is dedicated to the well, have the interests of all owners been consolidated by communitization, unitization, force-pooling, etc?

☐ Yes ☐ No If answer is "yes," type of consolidation _____

If answer is "no," list the owners and tract descriptions which have actually been consolidated. (Use reverse side of this form if necessary.) _____

No allowable will be assigned to the well until all interests have been consolidated (by communitization, unitization, forced-pooling, or otherwise) or until a non-standard unit, eliminating such interests, has been approved by the Commission.



CERTIFICATION

I hereby certify that the information contained herein is true and complete to the best of my knowledge and belief.

William G. Kern
Name

William G. Kern

Position

Engineer

Company

Anderson Oil & Gas Co., Inc.

Date

December 20, 1971

I hereby certify that the well location shown on this plat was plotted from field notes of actual surveys made by me or under my supervision, and that the same is true and correct to the best of my knowledge and belief.

Date Surveyed

DEC. 11, 1961

Registered Professional Engineer and/or Land Surveyor

Wm. E. Shover

Certificate No.

2189

