

DISTRICT I
P.O. Box 1930, Hobbs, NM 88241-1980

State of New Mexico

Energy, Minerals and Natural Resources Department

Form C-102
Revised February 10, 1994
Submit to Appropriate District Office
State Lease - 4 Copies
Fee Lease - 3 Copies

DISTRICT II
P.O. Drawer DD, Artesia, NM 88211-0719

OIL CONSERVATION DIVISION

DISTRICT III
1000 Rio Brazos Rd., Aztec, NM 87410

P.O. Box 2088

Santa Fe, New Mexico 87504-2088

AMENDED REPORT

DISTRICT IV
P.O. Box 2088, Santa Fe, NM 87504-2088

WELL LOCATION AND ACREAGE DEDICATION PLAT

API Number 30-025-33721	Pool Code 13560	Pool Name South Crossroads- Devonian
Property Code 20043	Property Name STATE 3	Well Number 1
OGRID No. 147404	Operator Name COBRA OIL & GAS CORPORATION	Elevation 4021

Surface Location

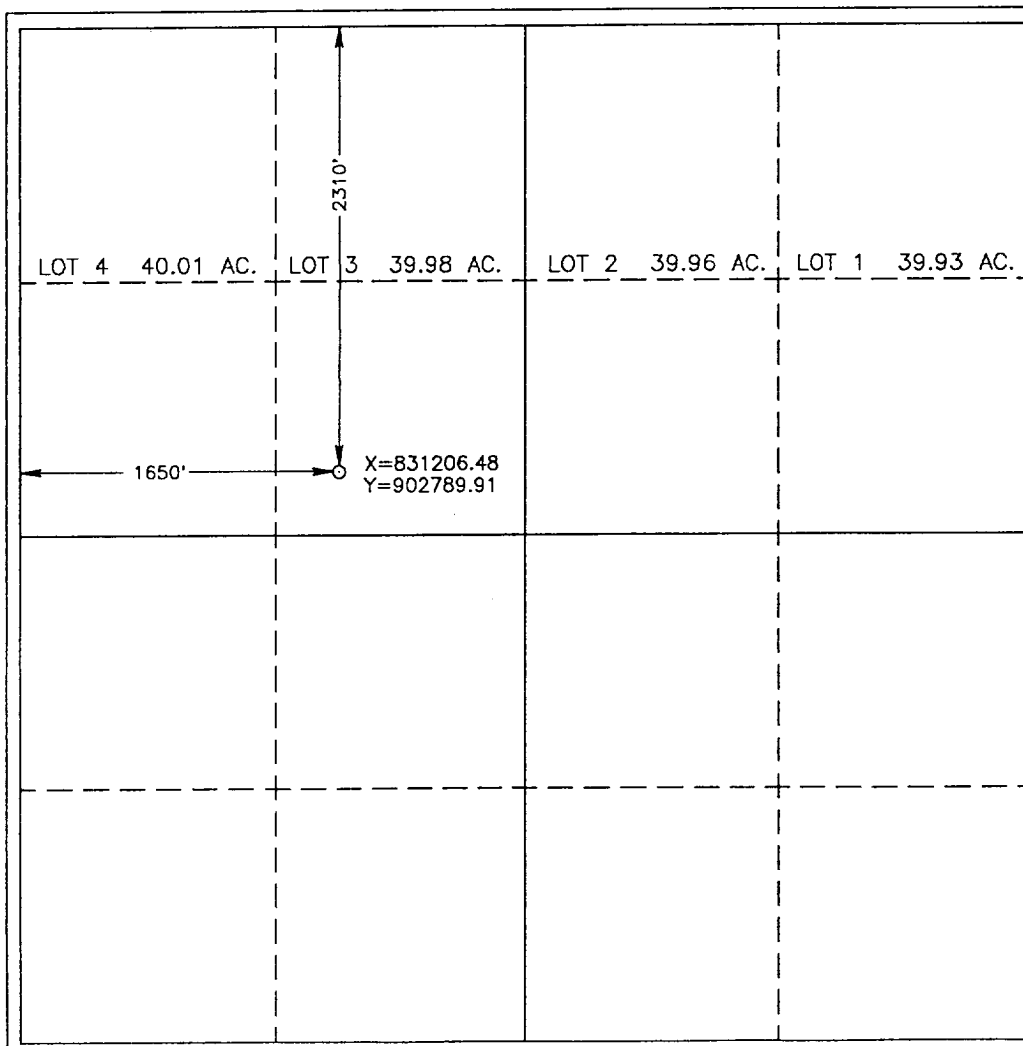
UL or lot No.	Section	Township	Range	Lot Idn	Feet from the	North/South line	Feet from the	East/West line	County
F	3	10 S	36 E		2310	NORTH	1650	WEST	LEA

Bottom Hole Location If Different From Surface

UL or lot No.	Section	Township	Range	Lot Idn	Feet from the	North/South line	Feet from the	East/West line	County

Dedicated Acres 80	Joint or Infill	Consolidation Code	Order No.
-----------------------	-----------------	--------------------	-----------

NO ALLOWABLE WILL BE ASSIGNED TO THIS COMPLETION UNTIL ALL INTERESTS HAVE BEEN CONSOLIDATED OR A NON-STANDARD UNIT HAS BEEN APPROVED BY THE DIVISION



OPERATOR CERTIFICATION

I hereby certify the the information contained herein is true and complete to the best of my knowledge and belief.

Rory Edwards
Signature
Rory Edwards
Printed Name
Production Supervisor
Title
11/23/96
Date

SURVEYOR CERTIFICATION

I hereby certify that the well location shown on this plat was plotted from field notes of actual surveys made by me or under my supervision, and that the same is true and correct to the best of my belief.

NOVEMBER 14, 1996

Date Surveyed
Signature & Seal of Professional Surveyor
Professional Surveyor
11-18-96
N.M.O. Num. 96-1498-1498
Certificate No. JOHN W. WEST, 676
J. EIDSON, 3239
CARY G. EIDSON, 12641