

NO. OF COPIES RECEIVED	
DISTRIBUTION	
SANTA FE	
FILE	
U.S.G.S.	
LAND OFFICE	
OPERATOR	

NEW MEXICO OIL CONSERVATION COMMISSION

Form C-101  
Revised 1-1-65

AUG 18 11 27 AM '69

5A. Indicate Type of Lease  
STATE  FEE

5. State Oil & Gas Lease No.  
—

APPLICATION FOR PERMIT TO DRILL, DEEPEN, OR PLUG BACK

1a. Type of Work

b. Type of Well DRILL  DEEPEN  PLUG BACK   
OIL WELL  GAS WELL  OTHER  SINGLE ZONE  MULTIPLE ZONE

2. Name of Operator  
McGrath & Smith, Inc.

3. Address of Operator  
418 Building of the Southwest, Midland, Texas 79701

4. Location of Well  
UNIT LETTER N LOCATED 660' FEET FROM THE South LINE  
AND 1900 FEET FROM THE West LINE OF SEC. 25 TWP. 8-S RGE. 35-E NMPM

7. Unit Agreement Name  
—

8. Farm or Lease Name  
Carter

9. Well No.  
1

10. Field and Part, or Wellcat  
**UNDESIGNATED**  
Allison Middle Penn

12. County  
Roosevelt

19. Proposed Depth  
9900

19A. Formation  
Bough C

20. Rotary or C.T.  
Rotary

21. Elevations (Show whether DF, RT, etc.)  
GL 4155 KB 4166

21A. Kind & Status Plug. Bond  
Statewide-on file

21B. Drilling Contractor  
Cactus Drilling Corp.

22. Approx. Date Work will start  
On Approval

PROPOSED CASING AND CEMENT PROGRAM

SIZE OF HOLE	SIZE OF CASING	WEIGHT PER FOOT	SETTING DEPTH	SACKS OF CEMENT	EST. TOP
17 1/2"	13 3/8"	48	375	375	Surface
11 "	8 5/8"	24,28,32	4200	500	3400
7 7/8 "	5 1/2 "	17	9850	400	7200

CASING

PLEASE PRIOR TO RUNNING 13 3/8

11-20-69

IN ABOVE SPACE DESCRIBE PROPOSED PROGRAM: IF PROPOSAL IS TO DEEPEN OR PLUG BACK, GIVE DATA ON PRESENT PRODUCTIVE ZONE AND PROPOSED NEW PRODUCTIVE ZONE. GIVE BLOWOUT PREVENTER PROGRAM, IF ANY.

I hereby certify that the information above is true and complete to the best of my knowledge and belief.

Signed J.B. Taylor Title Sup't. Date August 18, 1969

(This space for State Use)

APPROVED BY [Signature] TITLE SUPERVISOR DATE AUG 20 1969

CONDITIONS OF APPROVAL, IF ANY:

NEW MEXICO OIL CONSERVATION COMMISSION  
WELL LOCATION AND ACREAGE DEDICATION PLAT

Form C-102  
Supersedes C-128  
Effective 1-1-63

All distances must be from the outer boundaries of the Section.

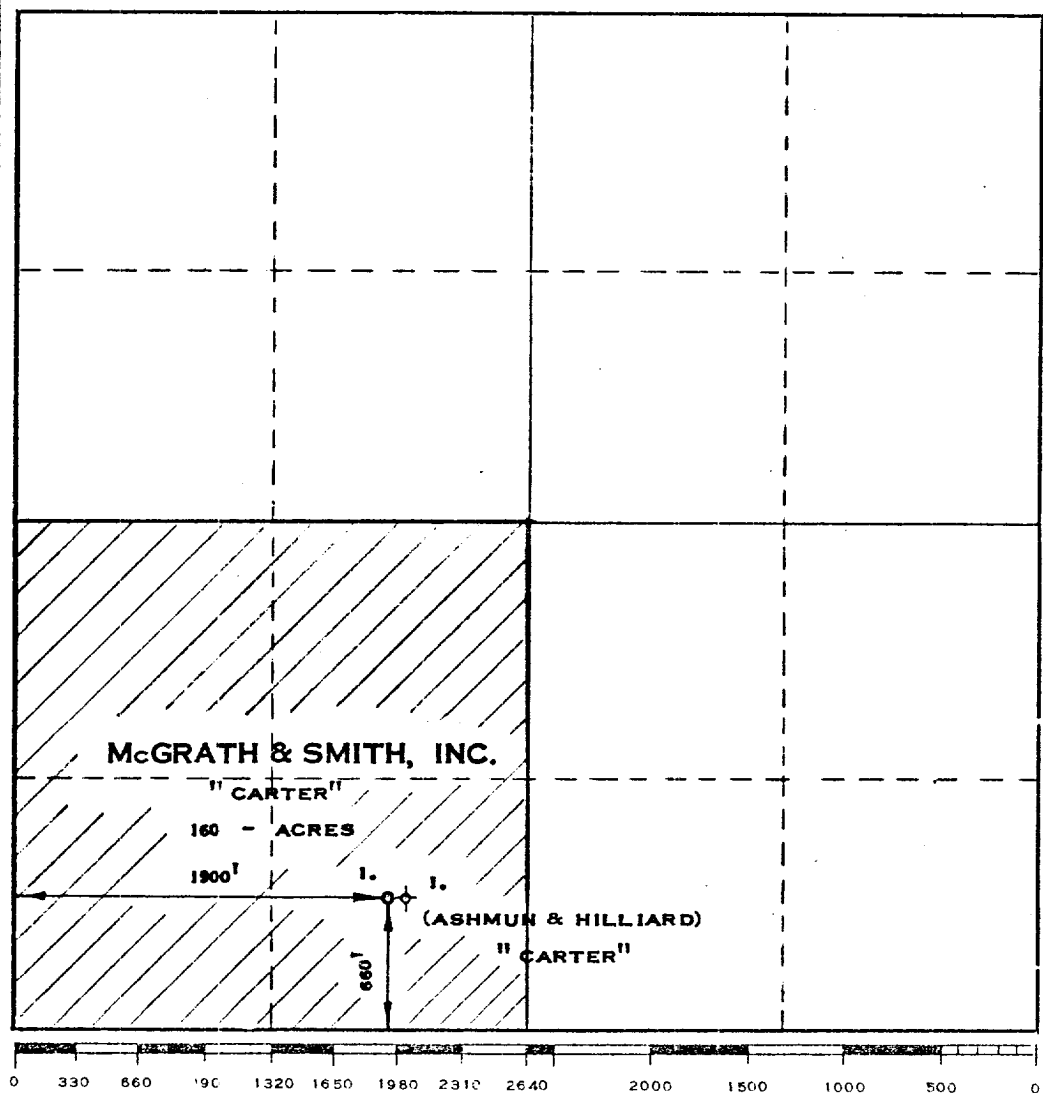
Operator <b>McGRATH &amp; SMITH, INC.</b>		Lease <b>CARTER</b>		Well No. <b>1</b>
Unit Letter <b>"N"</b>	Section <b>25</b>	Township <b>8-S</b>	Range <b>35-E</b>	County <b>ROOSEVELT</b>
Actual Footage Location of Well: <b>660</b> feet from the <b>SOUTH</b> line and <b>1900</b> feet from the <b>WEST</b> line				
Ground Level Elev. <b>4155</b>	Producing Formation <b>PENNSYLVANIAN</b>	Pool <b>ALLISON MIDDLE PENN</b>	Dedicated Acreage: <b>160</b> Acres	

- Outline the acreage dedicated to the subject well by colored pencil or hachure marks on the plat below.
- If more than one lease is dedicated to the well, outline each and identify the ownership thereof (both as to working interest and royalty).
- If more than one lease of different ownership is dedicated to the well, have the interests of all owners been consolidated by communitization, unitization, force-pooling, etc?

Yes  No If answer is "yes" type of consolidation \_\_\_\_\_

If answer is "no," list the owners and tract descriptions which have actually been consolidated. (Use reverse side of this form if necessary.) \_\_\_\_\_

No allowable will be assigned to the well until all interests have been consolidated (by communitization, unitization, forced-pooling, or otherwise) or until a non-standard unit, eliminating such interests, has been approved by the Commission.



**CERTIFICATION**

I hereby certify that the information contained herein is true and complete to the best of my knowledge and belief.

Name  
*J. Taylor*

Position  
*SUP'V*

Company  
*McGrath & Smith, Inc.*

Date  
*August 18, 1969*

I hereby certify that the well location shown on this plat was plotted from field notes of actual surveys made by me or under my supervision, and that the same is true and correct to the best of my knowledge and belief.

Date Surveyed  
**AUGUST 16, 1969**

Registered Professional Engineer and Land Surveyor  
*Max A. Schumann Jr.*  
**MAX A. SCHUMANN JR.**

Certificate No. **1510**