

UNITED STATES
DEPARTMENT OF THE INTERIOR
GEOLOGICAL SURVEY

APPLICATION FOR PERMIT TO DRILL, DEEPEN, OR PLUG BACK

1a. TYPE OF WORK
 DRILL DEEPEN PLUG BACK

b. TYPE OF WELL
 OIL WELL GAS WELL OTHER
 SINGLE ZONE MULTIPLE ZONE

2. NAME OF OPERATOR
 Wolfson Oil Company 3206 Republic Bank Tower Dallas, Tex.

3. ADDRESS OF OPERATOR
 3206 Republic Bank Tower Dallas, Texas

4. LOCATION OF WELL (Report location clearly and in accordance with any State requirements.*)
 At surface 2310 fr North & 2217' fr West
 At proposed prod. zone

14. DISTANCE IN MILES AND DIRECTION FROM NEAREST TOWN OR POST OFFICE*
 13 Miles South of Kenna

15. DISTANCE FROM PROPOSED* LOCATION TO NEAREST PROPERTY OR LEASE LINE, FT. (Also to nearest drlg. unit line, if any) 330'

18. DISTANCE FROM PROPOSED LOCATION* TO NEAREST WELL, DRILLING, COMPLETED, OR APPLIED FOR, ON THIS LEASE, FT. 4350

21. ELEVATIONS (Show whether DF, RT, GR, etc.)
 4406 GR

16. NO. OF ACRES IN LEASE 240

19. PROPOSED DEPTH 4350

17. NO. OF ACRES ASSIGNED TO THIS WELL 40

20. ROTARY OR CABLE TOOLS Rotary

22. APPROX. DATE WORK WILL START*
 Sept 15, 1978

23. PROPOSED CASING AND CEMENTING PROGRAM

SIZE OF HOLE	SIZE OF CASING	WEIGHT PER FOOT	SETTING DEPTH	QUANTITY OF CEMENT
11	8 5/8	24	1780	600 CIRCULATE
7 7/8	4 1/2	9.5	4350	200

SEE ATTACHED FOR
CONDITIONS OF APPROVAL

RECEIVED

AUG 10 1978

"APPROVAL TO FLARE GRANTED WHILE DRILLING AND TESTING."

Unless Drilling Operations have Commenced, this drilling approval Expires 11-24-78

U.S. GEOLOGICAL SURVEY
HOBB'S, NEW MEXICO

IN ABOVE SPACE DESCRIBE PROPOSED PROGRAM: If proposal is to deepen or plug back, give data on present productive zone and proposed new productive zone. If proposal is to drill or deepen directionally, give pertinent data on subsurface locations and measured and true vertical depths. Give blowout preventer program, if any.

24. SIGNED [Signature] TITLE Prod. Engr DATE 8-9-78

(This space for Federal or State office use)

PERMIT NO. _____ APPROVAL DATE _____

APPROVED BY _____ TITLE _____

CONDITIONS OF APPROVAL, IF ANY:

*See Instructions On Reverse Side

APPROVED
AS AMENDED
AUG 24 1978
[Signature]
ACTING DISTRICT ENGINEER

HOBBS, N. W.
CIT. CONSERVATION COMM.

APR 29 1978

RECEIVED

NEW MEXICO OIL CONSERVATION COMMISSION
WELL LOCATION AND ACREAGE DEDICATION PLAT

Form C-102
Supersedes C-128
Effective 1-1-65

All distances must be from the outer boundaries of the Section.

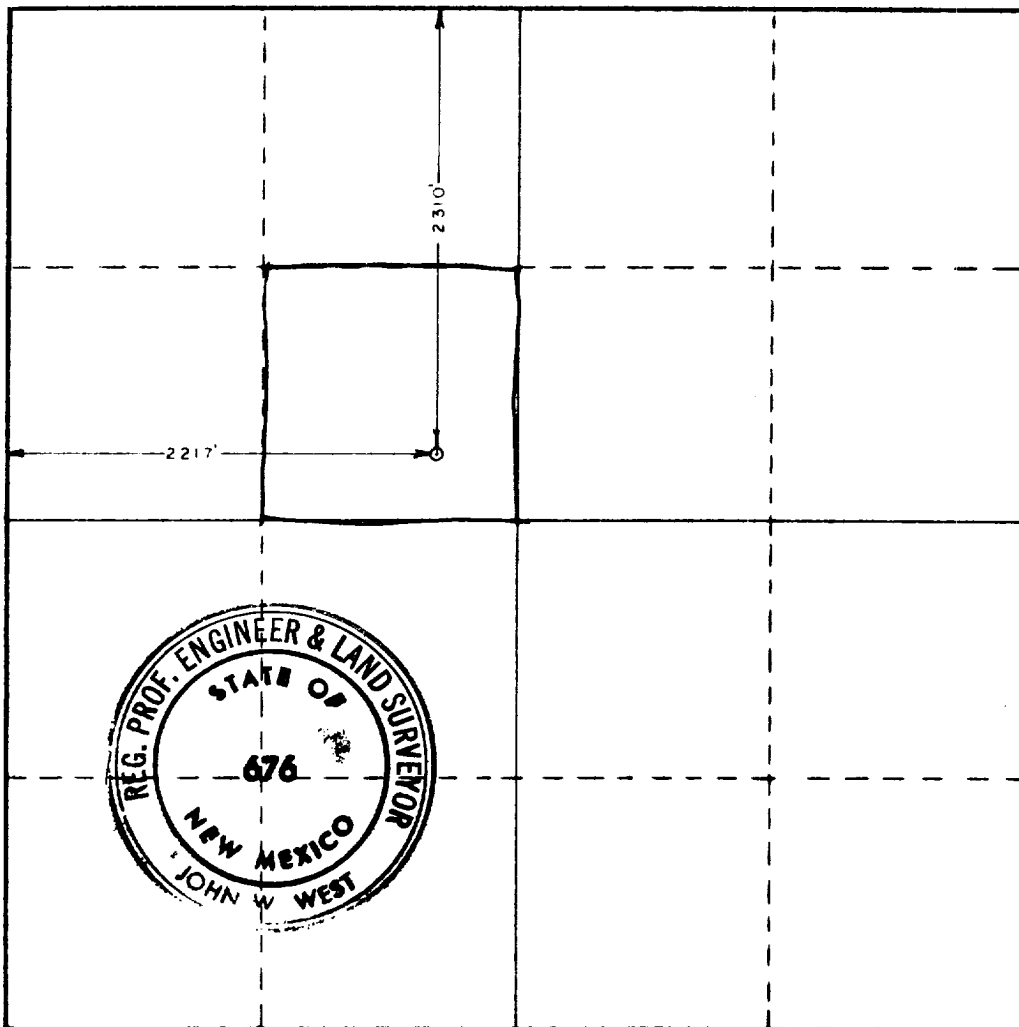
Operator Wolfson Oil Co.		Lease Mountain Federal			Well No. 3
Unit Letter F	Section 30	Township 7 South	Range 32 East	County Roosevelt	
Actual Footage Location of Well: 2310 feet from the North line and 2217 feet from the West line					
Ground Level Elev. 4406.3	Producing Formation San Andres	Pool Tomahawk	Dedicated Acreage: 40 Acres		

1. Outline the acreage dedicated to the subject well by colored pencil or hachure marks on the plat below.
2. If more than one lease is dedicated to the well, outline each and identify the ownership thereof (both as to working interest and royalty).
3. If more than one lease of different ownership is dedicated to the well, have the interests of all owners been consolidated by communitization, unitization, force-pooling, etc?

Yes No If answer is "yes," type of consolidation _____

If answer is "no," list the owners and tract descriptions which have actually been consolidated. (Use reverse side of this form if necessary.) _____

No allowable will be assigned to the well until all interests have been consolidated (by communitization, unitization, forced-pooling, or otherwise) or until a non-standard unit, eliminating such interests, has been approved by the Commission.



CERTIFICATION

I hereby certify that the information contained herein is true and complete to the best of my knowledge and belief.

H.G. Freedman

Name

H.G. Freedman

Position

Prod. Engr

Company

Wolfson Oil Co.

Date

8-3-78

I hereby certify that the well location shown on this plat was plotted from field notes of actual surveys made by me or under my supervision, and that the same is true and correct to the best of my knowledge and belief.

Date Surveyed

July 26, 1978

Registered Professional Engineer and/or Land Surveyor

John W. West

Certificate No. John W. West

676

Ronald J. Eidson

3239

0 330 660 990 1320 1650 1980 2310 2640 2000 1500 1000 500 0

OIL CONSERVATION COMM
HARRIS N. M.

AUG 29 1978

RECEIVED

DRILLING PROGNOSIS

I. Well Identification:

Lease Name: Mountain-Federal

Well No.: 3

Location: 2310' FNL & 2217' FWL Section 30, T-7-S, R-32-E

County: Roosevelt County

State: New Mexico

Elevations: 4406'

II. Drilling Objective:

Zone: San Andres

Total Depth: 4350'

Pool Name: Tomahawk

Productive Interval: 4100' - 4350'

III. Formation Tops:

Zone	Tops		Gross Interval Drilled	Probable Fluid Production
	Drilling Depth Estimated:	Subsea Depth		
<u>Rustler</u>	<u>1700'</u>			
<u>Yates</u>	<u>2200'</u>			
<u>San Andres</u>	<u>3341'</u>			<u>Hydrocarbons</u>
<u>P-1</u>	<u>4050'</u>			
<u>P-2</u>	<u>4130'</u>			
<u>P-3</u>	<u>4240'</u>			
<u>TOTAL DEPTH</u>	<u>4350'</u>			

